

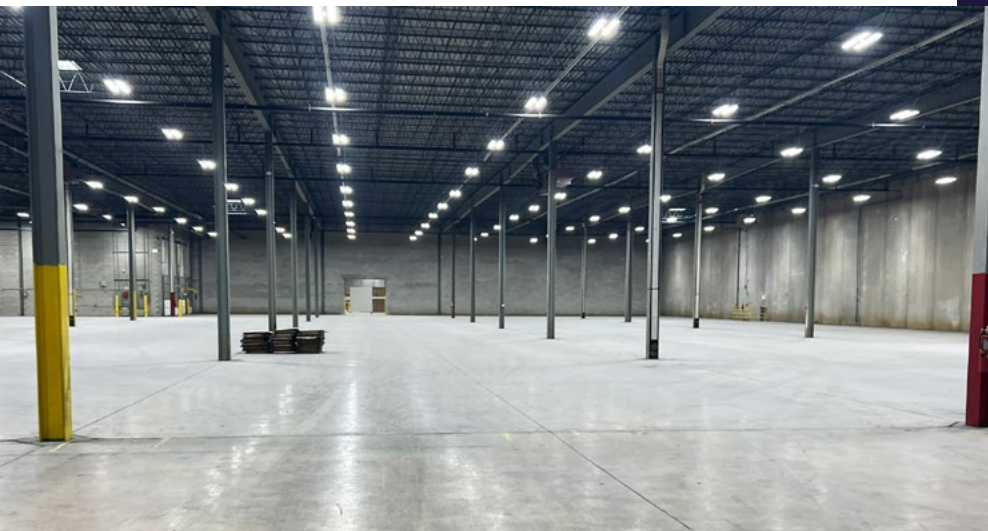
AVAILABLE FOR LEASE 125,114 SF (DIVISIBLE)



VACANT | MARKET-READY PREP COMPLETE

1726-1850 BLACKHAWK DRIVE, WEST CHICAGO, ILLINOIS





Property Features

- » Building Size: 249,470 SF
- » Space Available: 125,114 SF (Divisible to 57,972 SF or 67,142 SF)
- » Office Area: 4% Office Space
- » Clear Height: 24'
- » Interior Docks: 32
- » Building Depth: 212'
- » Sprinkler: ESFR (.24 GPM/3,420 SF)
- » Car Parking: 226
- » Power: 2,000 Amps, 277/480 Volts
- » Year Built: 1987
- » Column Spacing: 35' x 42'
- » 2024 Taxes: \$1.23 PSF
- » CAM: \$0.95 PSF (Includes Management Fee)
- » Bldg. Insurance: \$0.12 PSF
- » Rail: Potential (Union Pacific)



Vacant | Market-Ready Prep Completed



Divisible to Accommodate the Market Needs



Newly Paved Parking Lot



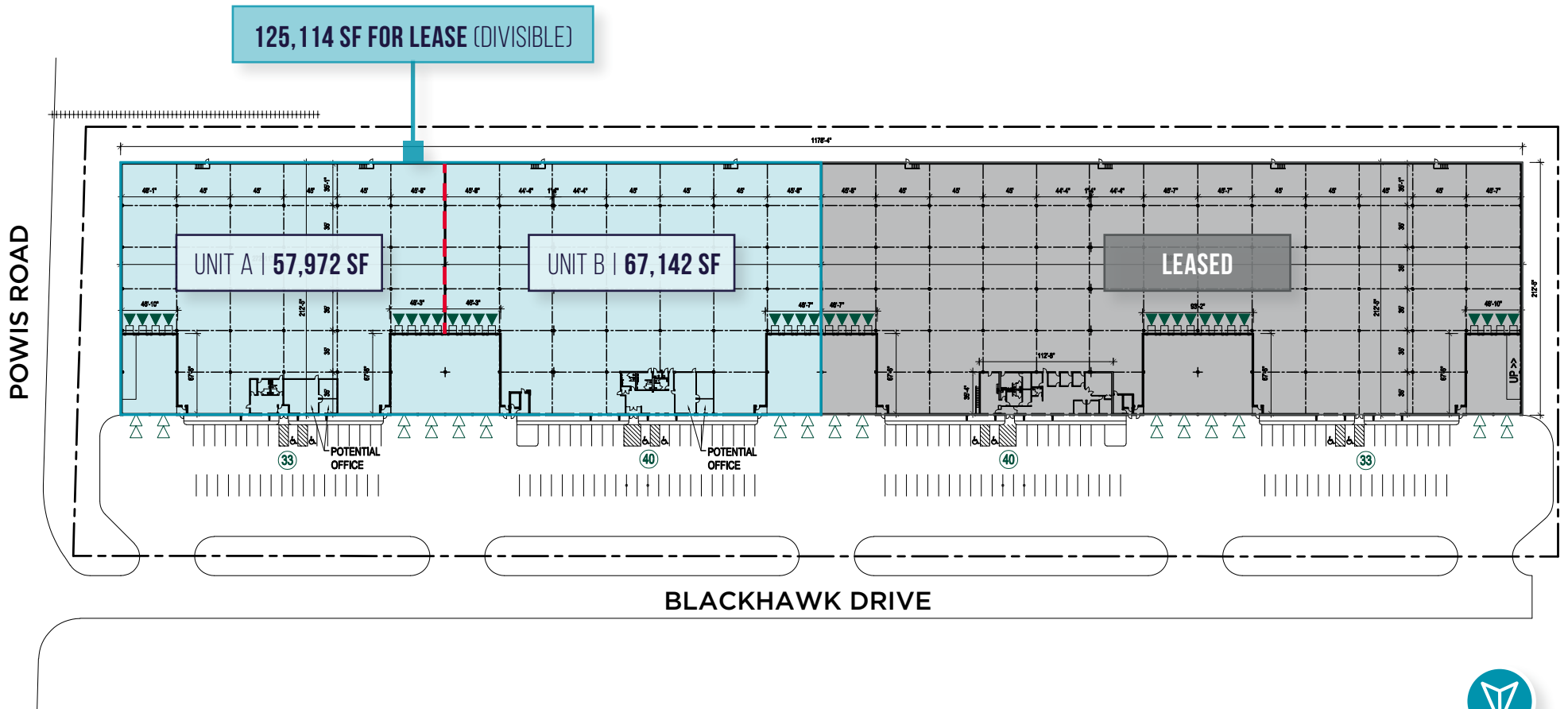
Building Is Potentially Rail Served



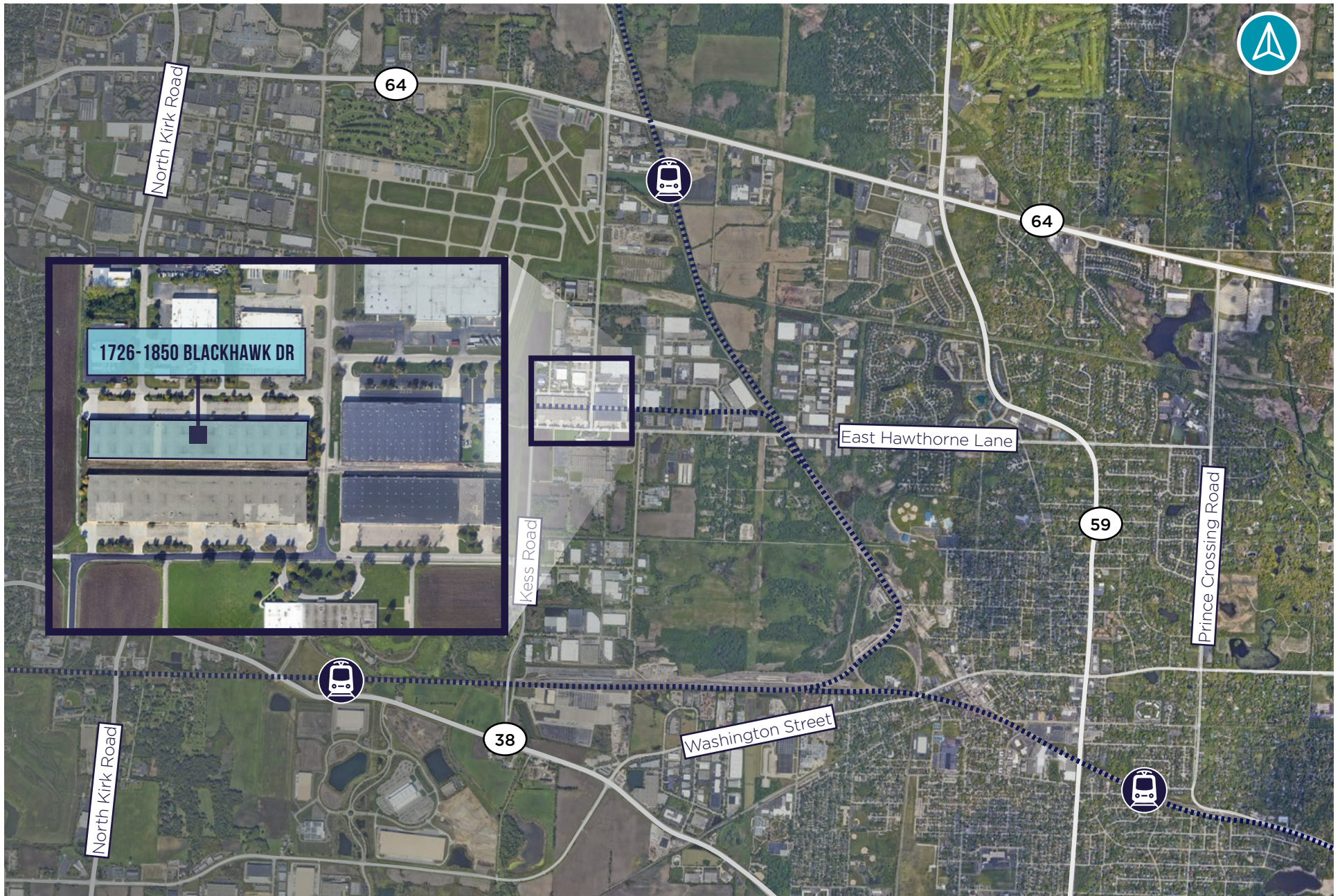
Low DuPage County Taxes

Site Plan

125,114 SF FOR LEASE | DIVISIBLE TO 57,972 SF & 67,142 SF



Aerial Map



AVAILABLE FOR LEASE 125,114 SF (DIVISIBLE)



1726-1850 BLACKHAWK DRIVE | WEST CHICAGO, IL

CONTACT

MICHAEL MAGLIANO
Executive Managing Director
847 518 3259
michael.magliano@cushwake.com

SETH COLE
Senior Associate
847 845 3656
seth.cole@cushwake.com

SYDNEY ITKIN
Associate
224 515 6018
sydney.itkin@cushwake.com



©2025 Cushman & Wakefield. All rights reserved. The information contained in this communication is strictly confidential. This information has been obtained from sources believed to be reliable but has not been verified. NO WARRANTY OR REPRESENTATION, EXPRESS OR IMPLIED, IS MADE AS TO THE CONDITION OF THE PROPERTY (OR PROPERTIES) REFERENCED HEREIN OR AS TO THE ACCURACY OR COMPLETENESS OF THE INFORMATION CONTAINED HEREIN, AND SAME IS SUBMITTED SUBJECT TO ERRORS, OMISSIONS, CHANGE OF PRICE, RENTAL OR OTHER CONDITIONS, WITHDRAWAL WITHOUT NOTICE, AND TO ANY SPECIAL LISTING CONDITIONS IMPOSED BY THE PROPERTY OWNER(S). ANY PROJECTIONS, OPINIONS OR ESTIMATES ARE SUBJECT TO UNCERTAINTY AND DO NOT SIGNIFY CURRENT OR FUTURE PROPERTY PERFORMANCE.