



Oakridge Winfield Office Center | For Lease

**5589-5595 WINFIELD BOULEVARD
SAN JOSE, CA**

Available Spaces

5589 Winfield Blvd

- Suite 130- ±1,472 RSF

5595 Winfield Blvd

- Suite 204- ±1,030 RSF
- Suite 110- ±1,061 RSF (Former Dental Space)
- Suite 106- ±1,181 RSF
- Suite 200- ±1,416 RSF (Former Dental)
- Suite 100- ±1,477 RSF

Property Highlights

- Over 4/1000 parking ratio
- Elevator served
- Professional managed office center
- Great visibility, located directly across from Westfield Oakridge Mall
- Restaurants, Starbucks, services, and shopping within walking distance
- Conveniently situated near Blossom Hill Road, on Winfield Blvd
- Easy access from Hwys 85 and 87
- General office, medical or dental uses acceptable
- Dental suitable suites with compressed air & vacuum lines available to suites

For information, please contact:

Geri Wong

Senior Managing Director

t 408-987-4134

geri.wong@nmrk.com

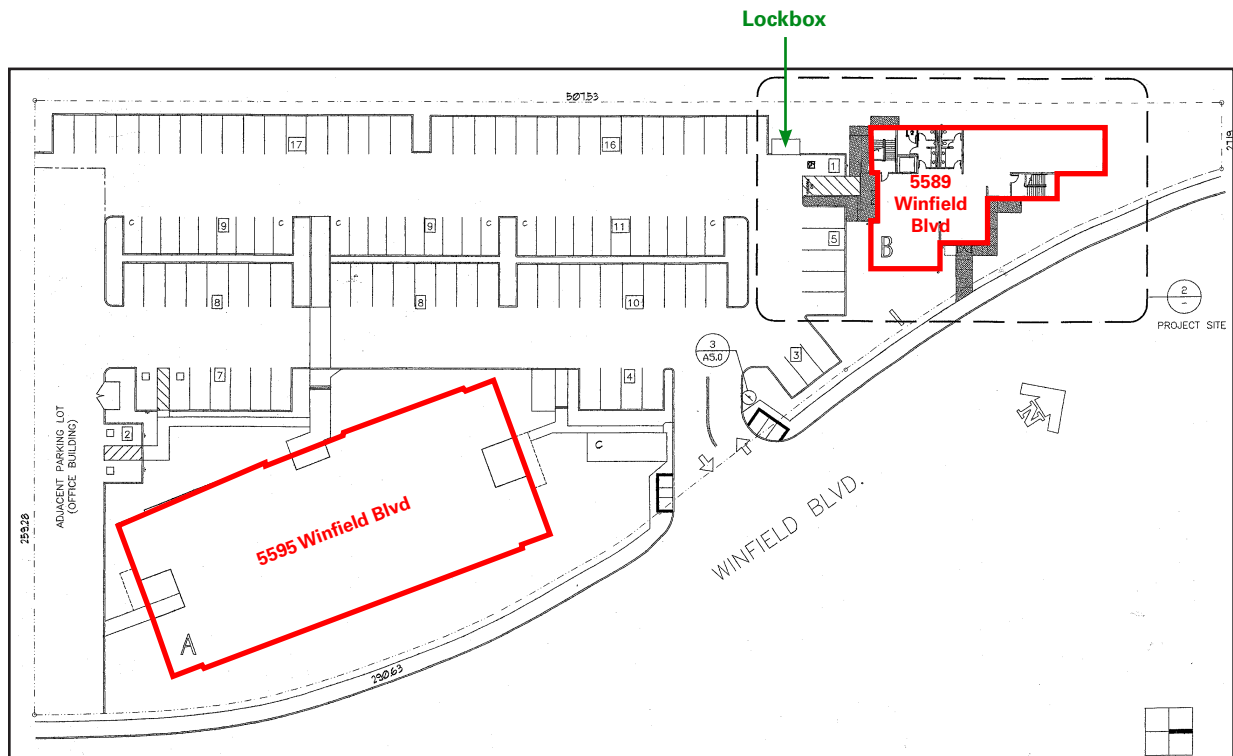
CA RE License #01142432

nmrk.com

NEWMARK

The distributor of this communication is performing acts for which a real estate license is required. The information contained herein has been obtained from sources deemed reliable but has not been verified and no guarantee, warranty or representation, either express or implied, is made with respect to such information. Terms of sale or lease and availability are subject to change or withdrawal without notice. 8917992918 • 04/25

Site Plan



*This site plan is not drawn to scale.

For information, please contact:

Geri Wong

Senior Managing Director

t 408-987-4134

geri.wong@nmrk.com

CA RE License #01142432

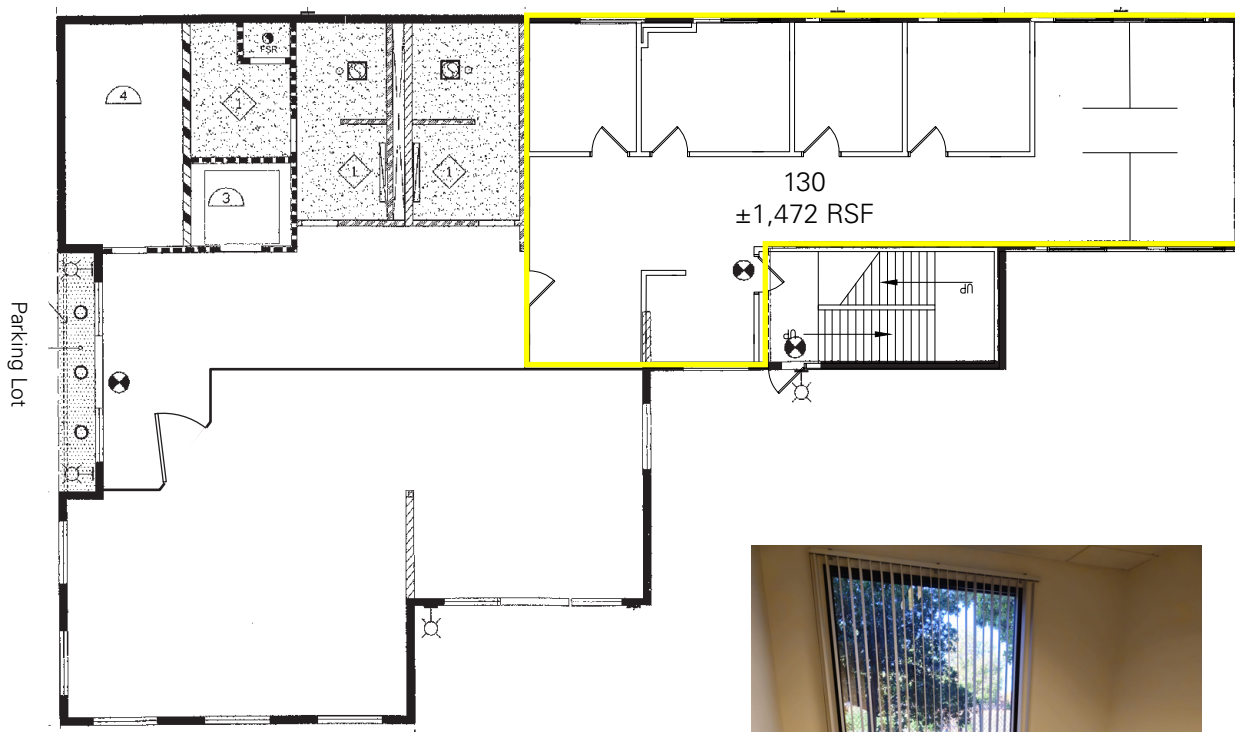
nmrk.com

NEWMARK

The distributor of this communication is performing acts for which a real estate license is required. The information contained herein has been obtained from sources deemed reliable but has not been verified and no guarantee, warranty or representation, either express or implied, is made with respect to such information. Terms of sale or lease and availability are subject to change or withdrawal without notice. 8917992918 • 04/25

Floor Plan

5589 Winfield Blvd



*This floor plan is not drawn to scale.

For information, please contact:

Geri Wong

Senior Managing Director

t 408-987-4134

geri.wong@nmrk.com

CA RE License #01142432

nmrk.com

NEWMARK

The distributor of this communication is performing acts for which a real estate license is required. The information contained herein has been obtained from sources deemed reliable but has not been verified and no guarantee, warranty or representation, either express or implied, is made with respect to such information. Terms of sale or lease and availability are subject to change or withdrawal without notice. 8917992918 • 04/25

5589 Winfield Blvd - Gallery



For information, please contact:

Geri Wong

Senior Managing Director

t 408-987-4134

geri.wong@nmrk.com

CA RE License #01142432

nmrk.com

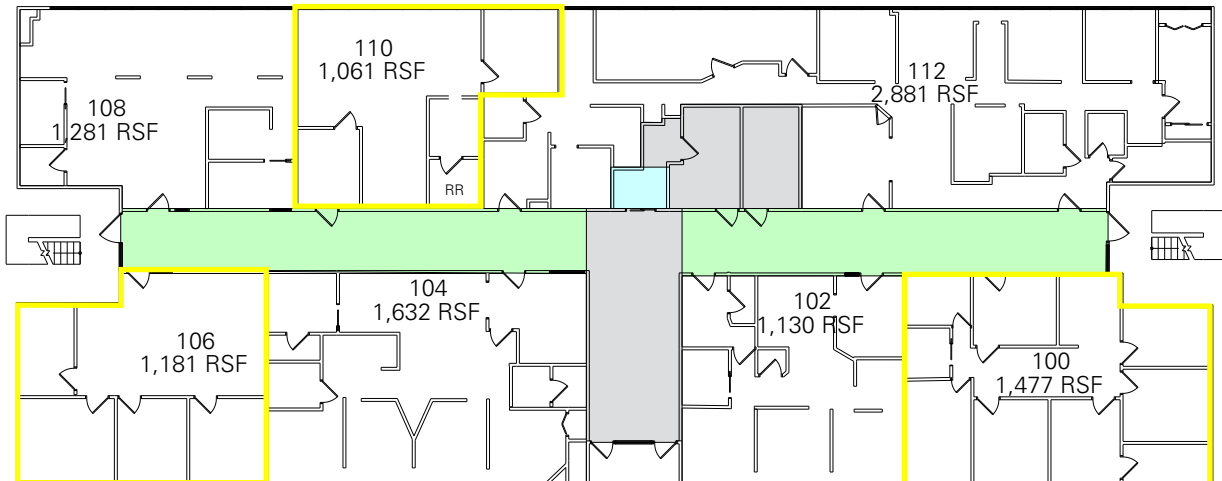
NEWMARK

The distributor of this communication is performing acts for which a real estate license is required. The information contained herein has been obtained from sources deemed reliable but has not been verified and no guarantee, warranty or representation, either express or implied, is made with respect to such information. Terms of sale or lease and availability are subject to change or withdrawal without notice. 8917992918 • 04/25

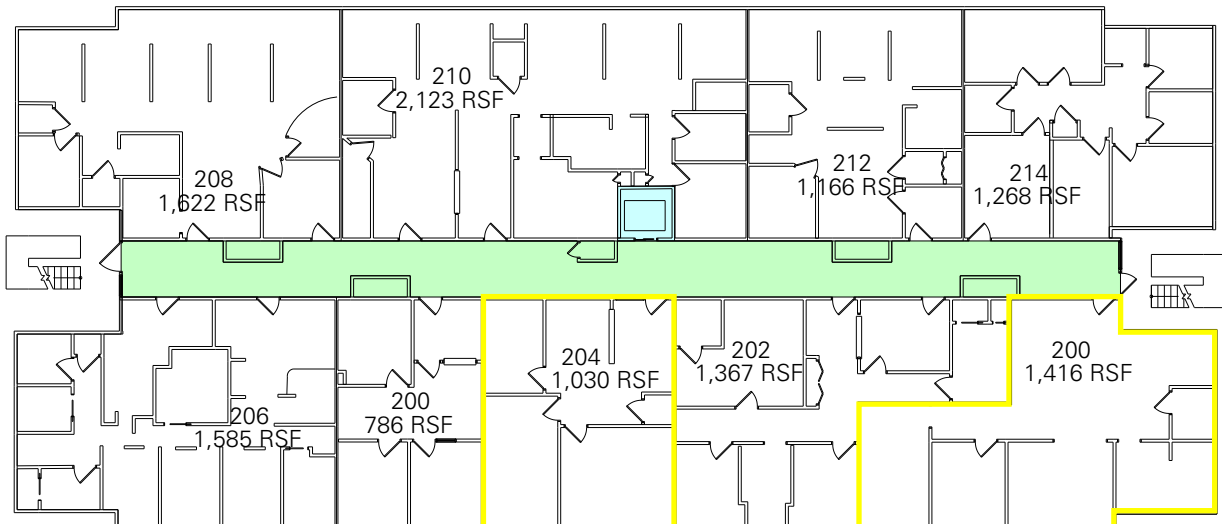
Floor Plan

5595 Winfield Blvd

1st Floor



2nd Floor



*This floor plan is not drawn to scale.

For information, please contact:

Geri Wong

Senior Managing Director

t 408-987-4134

geri.wong@nmrk.com

CA RE License #01142432

nmrk.com

NEWMARK

The distributor of this communication is performing acts for which a real estate license is required. The information contained herein has been obtained from sources deemed reliable but has not been verified and no guarantee, warranty or representation, either express or implied, is made with respect to such information. Terms of sale or lease and availability are subject to change or withdrawal without notice. 8917992918 • 04/25

5595 Winfield Blvd - Gallery



For information, please contact:

Geri Wong

Senior Managing Director

t 408-987-4134

geri.wong@nmrk.com

CA RE License #01142432

nmrk.com

NEWMARK

The distributor of this communication is performing acts for which a real estate license is required. The information contained herein has been obtained from sources deemed reliable but has not been verified and no guarantee, warranty or representation, either express or implied, is made with respect to such information. Terms of sale or lease and availability are subject to change or withdrawal without notice. 8917992918 • 04/25

Location & Amenities Map



For information, please contact:

Geri Wong

Senior Managing Director

t 408-987-4134

geri.wong@nmrk.com

CA RE License #01142432

nmrk.com

NEWMARK

The distributor of this communication is performing acts for which a real estate license is required. The information contained herein has been obtained from sources deemed reliable but has not been verified and no guarantee, warranty or representation, either express or implied, is made with respect to such information. Terms of sale or lease and availability are subject to change or withdrawal without notice. 8917992918 • 04/25