

10236

MEDICAL OFFICES FOR LEASE

ARTESIA

BELLFLOWER, CA 90706



RE/MAX
COMMERCIAL®

10236 ARTESIA BLVD. BELLFLOWER, CA 90706

Beautiful Medical building in the City of Bellflower. Each suite is equipped to handle all your office and staff needs with plenty of parking space for your patients. This building features solar energy, elevators, handicap access, pharmacy, high speed internet, HVAC, and more. Close to the 91, 605, and 710 freeway.

OFFICE DETAILS

1ST FLOOR	SIZE	FEATURES
SUITE 105	1,026 SQ FT	Lobby, Reception with window, Nurse station, storage room, Bathroom, 2 Exam rooms without sinks, 1 office
2ND FLOOR	SIZE	FEATURES
SUITE 208	1,207 SQ FT	Lobby, Reception with window, 3 exam rooms with sinks, 1 executive office, Bathroom, Break room, Cubicle space inlet, Storage space
SUITE 211	1,262 SQ FT	3 exam rooms with sinks, Executive office, Lobby, Break room, Reception
SUITE 218	1,201 SQ FT	4 exam rooms with sinks, lobby, reception, kitchenette, 1 office
3RD FLOOR	SIZE	FEATURES
SUITE 307	1,237 SQ FT	Reception large window, Lobby, 3 Exam room, Storage room, Biohazard Processing room, Break room, Bathroom
SUITE 311	1,139 SQ FT	Lobby with reception window, Reception area, Nurse station kitchenette, 2 bathrooms one with shower, 2 exam room with sinks, One office with bathroom with shower

BUILDING INFORMATION

Year Built	SIZE
SIZE	39,120 SQ FT
ZONING	BFM1
APN	7163-018-023
ELEVATOR	EQUIPPED
LAND USE	OFFICE

VANESSA MARTINEZ

(909)284-0733

vanessasellsre6@gmail.com

BRE 02099037

FERNANOO CARMONA

909.568.8474

fcarmona.remax@gmail.com

BRE 01503578

The distributor of this communication is performing acts for which a real estate license is required. The information contained herein has been obtained from sources deemed reliable but has not been verified and no guarantee, warranty or representation, either express or implied, is made with respect to such information. Terms of sale or lease and availability are subject to change or withdrawal without notice.

RE/MAX
COMMERCIAL®

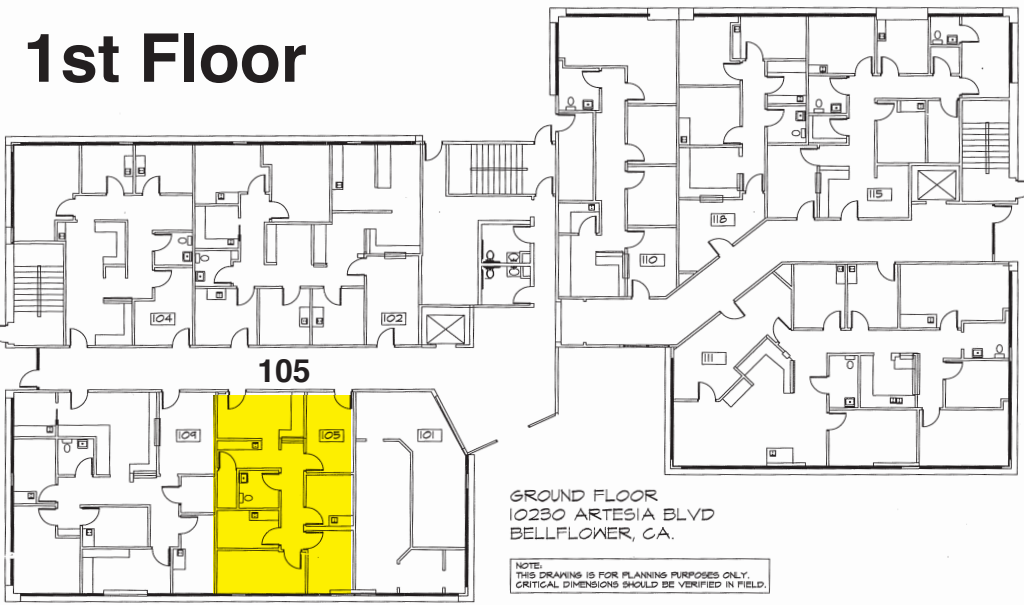


MEDICAL OFFICES FOR LEASE

10236 **ARTESIA**



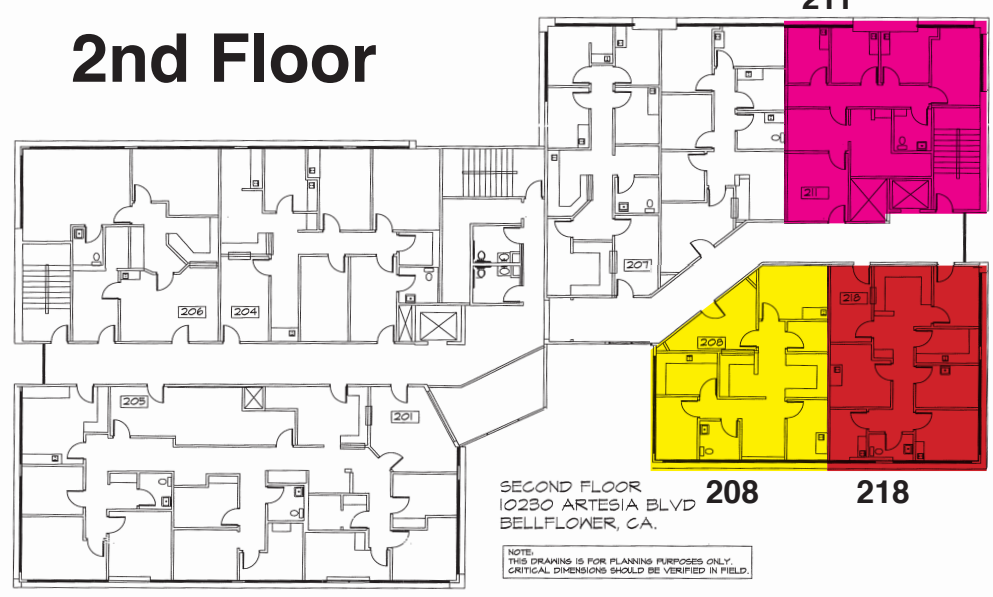
1st Floor



GROUND FLOOR
10230 ARTESIA BLVD
BELLFLOWER, CA.

NOTE:
THIS DRAWING IS FOR PLANNING PURPOSES ONLY.
CRITICAL DIMENSIONS SHOULD BE VERIFIED IN FIELD.

2nd Floor



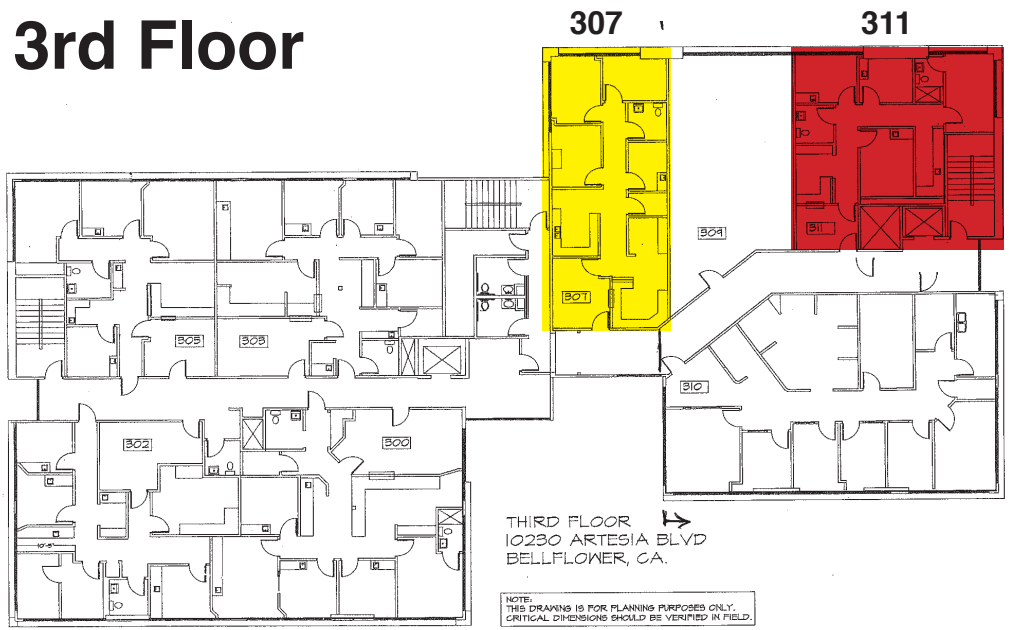
SECOND FLOOR
10230 ARTESIA BLVD
BELLFLOWER, CA.

NOTE:
THIS DRAWING IS FOR PLANNING PURPOSES ONLY.
CRITICAL DIMENSIONS SHOULD BE VERIFIED IN FIELD.

10236

MEDICAL OFFICES FOR LEASE ARTESIA

3rd Floor



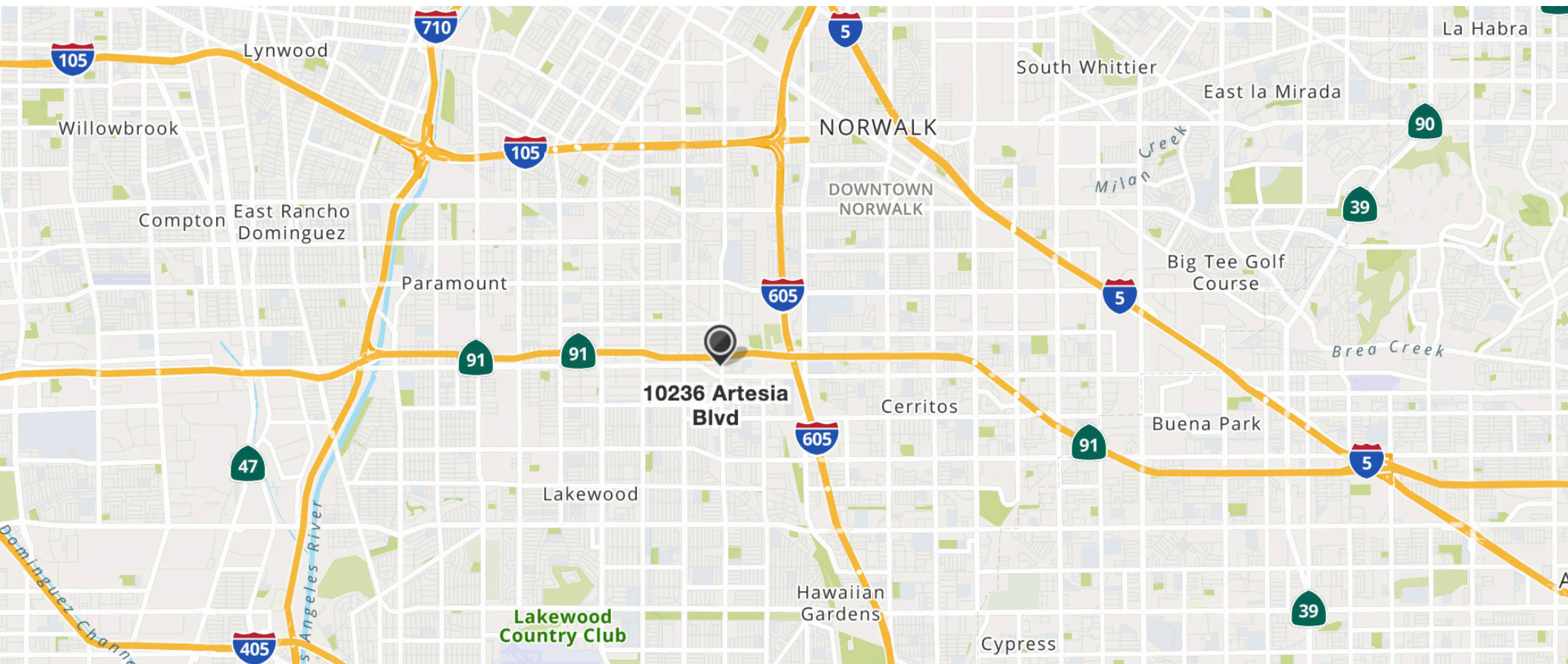
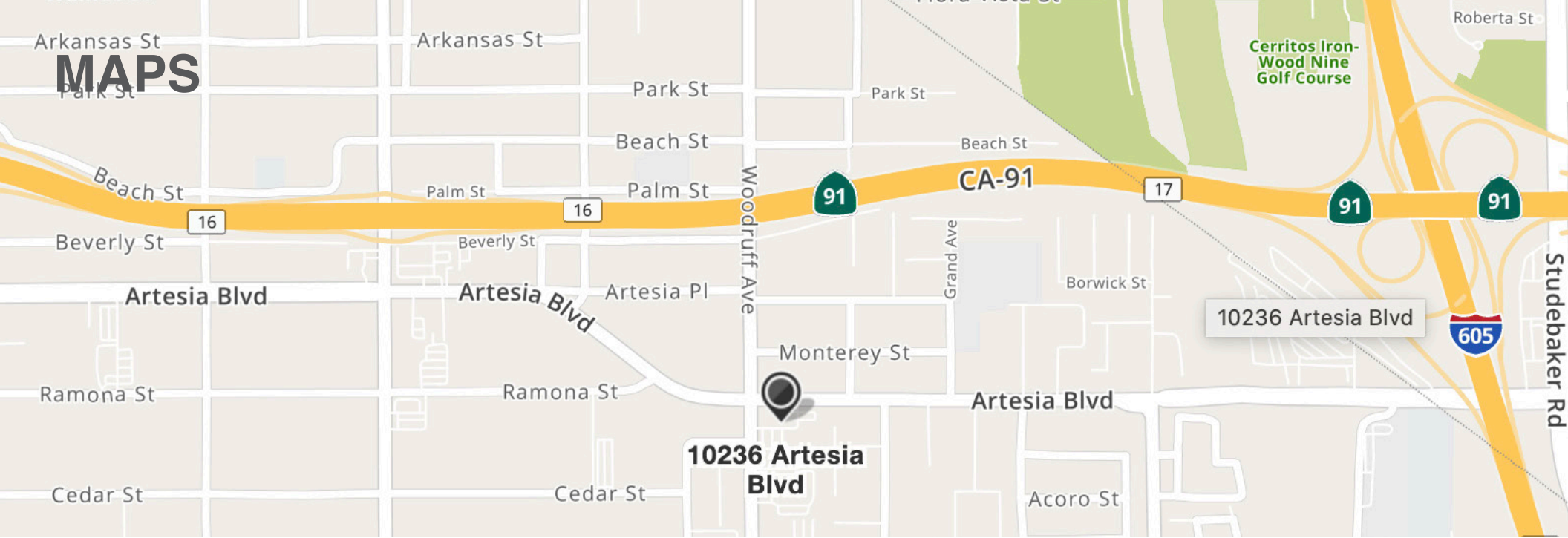
THIRD FLOOR
10230 ARTESIA BLVD
BELLFLOWER, CA.

NOTE:
THIS DRAWING IS FOR PLANNING PURPOSES ONLY.
CRITICAL DIMENSIONS SHOULD BE VERIFIED IN FIELD.

VANESSA MARTINEZ
(909)284-0733
vanessasellsre6@gmail.com
BRE 02099037

FERNANOO CARMONA
909.568.8474
fcarmona.remax@gmail.com
BRE 01503578







VANESSA MARTINEZ

(909)284-0733

vanessasellsre6@gmail.com

BRE 02099037

FERNANOO CARMONA

909.568.8474

fcarmona.remax@gmail.com

BRE 01503578

The distributor of this communication is performing acts for which a real estate license is required. The information contained herein has been obtained from sources deemed reliable but has not been verified and no guarantee, warranty or representation, either express or implied, is made with respect to such information. Terms of sale or lease and availability are subject to change or withdrawal without notice.

RE/MAX
COMMERCIAL®