



CIVIC CENTER TOWER

675 N FIRST STREET SAN JOSE, CA. 95112.

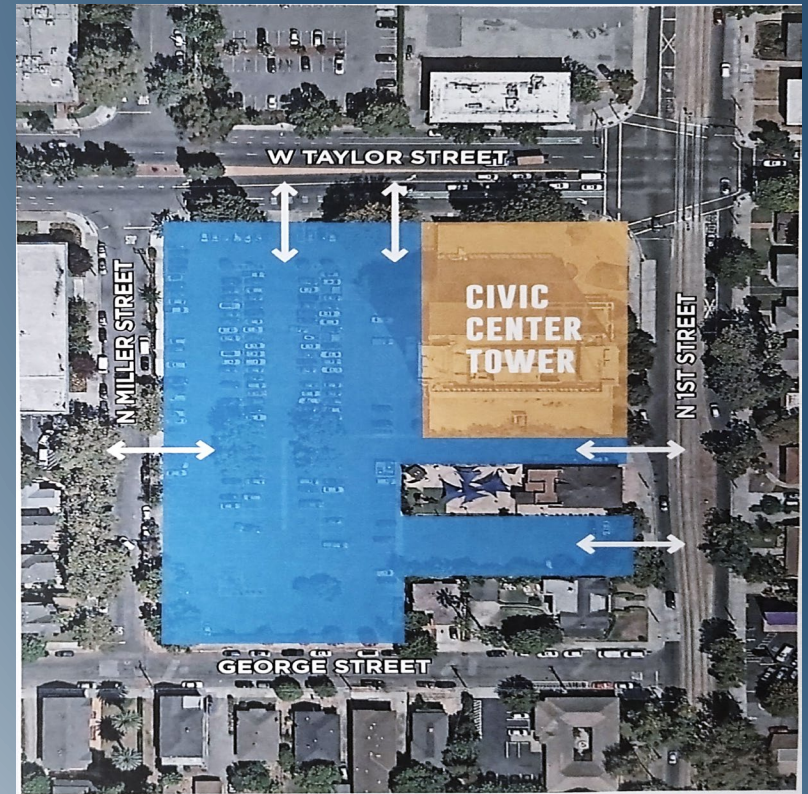
Almost 25,000 SF Leased in the last few months!

Anton Qiu
Anchor Pacific Capital, Inc.
2351 Powell Street
San Francisco, CA 94133
anton@apcap.us (408) 457-5678
DRE# 0995321



Building Amenities

- ± 3.21 Acres, 300+ Gated Free Parking Stalls with 5 Access Points
- Parking Ratio 3.0/1000 s.f. leased
- Light Rail In Front
- Open Air Plaza
- New Building Entrance Video Intercom System.
- Easy Access to Freeway on/off Ramp
- State Building and VTA Nearby
- Onsite Management with Fast Response
- \$1M Energy efficiency upgrades recently completed.



Executive Suites

Floor Plan

Suite 110 | Executive Suites

Executive Suite Amenities

- Break/Lunchroom
- Large Communal Lobby



安新資本
Anchor Pacific Capital

Floor Plan

Suite 110 A |

Executive Suite Amenities

- Large suite.
- First floor access.

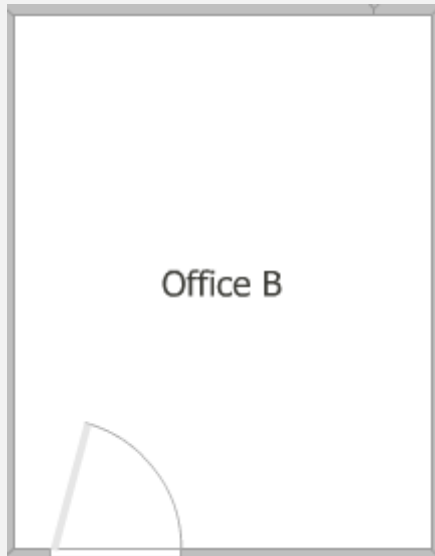


Floor Plan

Suite 110 B |

Executive Suite Amenities

- First floor access.



Floor Plan

Suite 110 C |

Executive Suite Amenities

- First floor access.



Floor Plan

Suite 110 D |

Executive Suite Amenities

- First floor access.

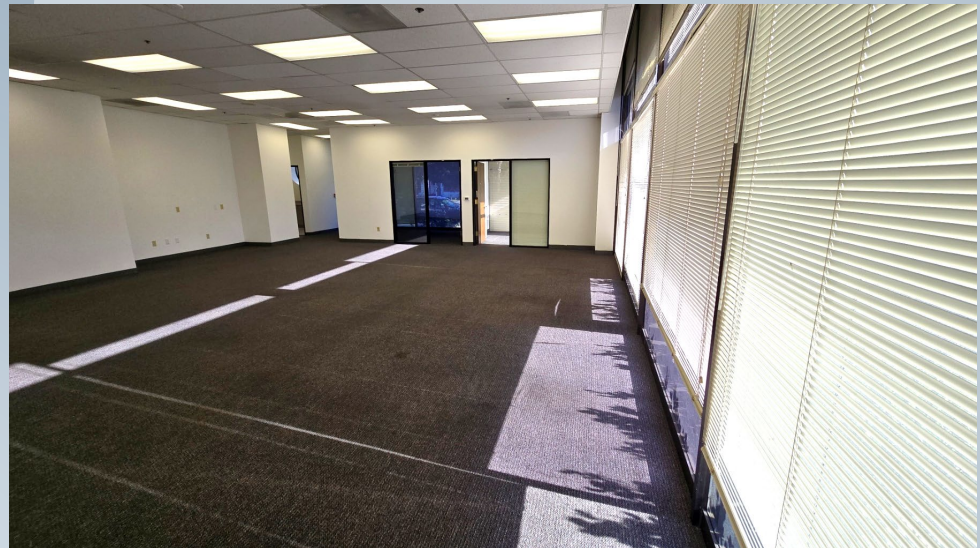
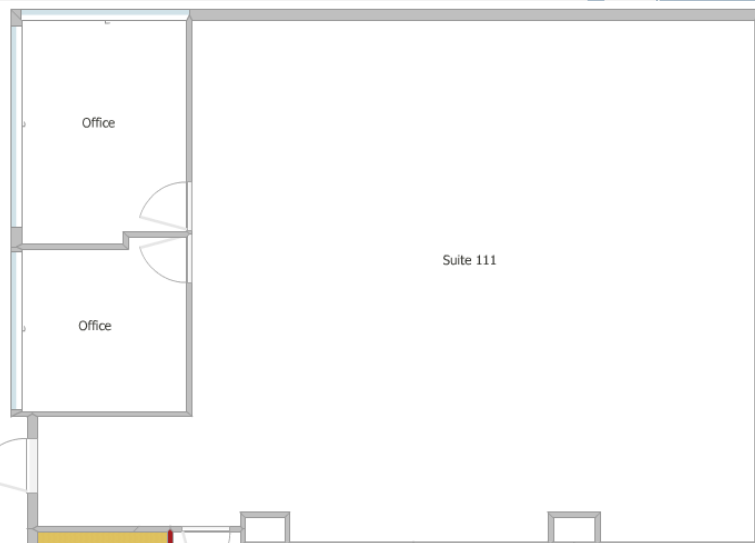


Floor Plan

Suite 111 |

Executive Suite Amenities

- First floor access.
- 2 Private offices
- Street Level entrance.
- Lots of natural light.



THANK YOU

Anton Qiu
Anchor Pacific Capital, Inc.
anton@apcap.us (408) 457-5678
DRE# 00995321

