



**KENNEDY
INVESTMENTS**
INVESTING IN FLORIDA SINCE 1970

FOR LEASE

1700 66TH STREET N, ST. PETERSBURG, FL 33710



TYRONE TOWER

ASKING RENT: \$20/SF - FULL SERVICE

PROPERTY OVERVIEW

Tyrone Tower is a 72,000 square foot Class B Office building centrally located near popular beaches, Downtown St. Pete and St. Pete International Airport. The property underwent over \$1,000,000 in renovations in 2020, which added new HVAC systems, roof, landscaping, and updated common areas. Located on busy 66th St, Tyrone Tower is within walking distance of Publix, the Tyrone Mall and many other amenities.

HIGHLIGHTS

- Secured building with 24/7 access for tenants
- Responsive management team
- Day Porter on site 5 days per week
- Pylon signage available

FOR MORE INFORMATION CONTACT:

Ryan Hutkowski
Director of Leasing & Brokerage
813-554-1212
ryan@kennedyinvestments.com

Shannon Rodgers
Senior Associate
813-540-7577
shannon@kennedyinvestments.com



**KENNEDY
INVESTMENTS**

INVESTING IN FLORIDA SINCE 1970

FOR LEASE

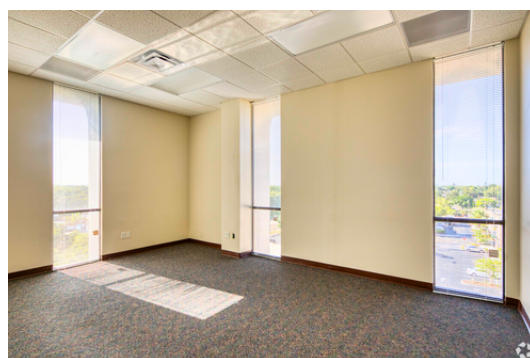
1700 66TH STREET N, ST. PETERSBURG, FL 33710



ASKING RENT: \$20/SF - FULL SERVICE

CAPITAL IMPROVEMENTS

- New HVAC Systems and Controls
- New Roof
- Fresh Exterior Paint
- Complete Remodel of the Lobby
- Renovated common area restrooms
- New Landscaping



FOR MORE INFORMATION CONTACT:

Ryan Hutkowski

Director of Leasing & Brokerage

813-554-1212

ryan@kennedyinvestments.com

Shannon Rodgers

Senior Associate

813-540-7577

shannon@kennedyinvestments.com

www.kennedyinvestments.com