

SKEES ROAD INDUSTRIAL PARK



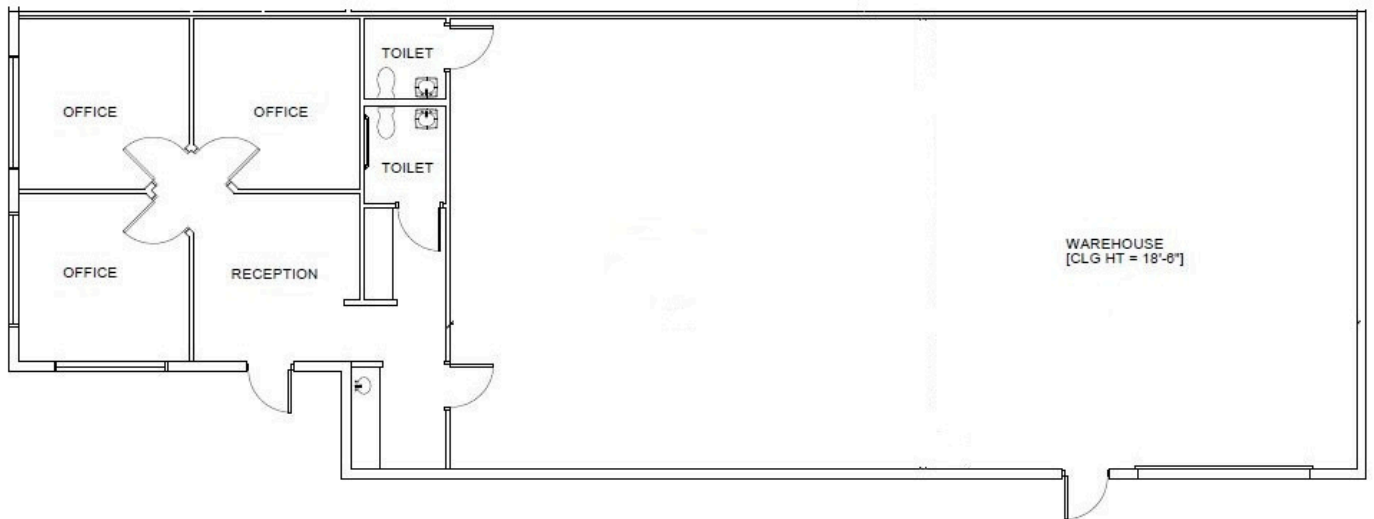
**3,000 SF OFFICE / WAREHOUSE WITH
PRIVATE FENCED AND GATED PARKING AREA
1432 SKEES ROAD, UNIT A WEST PALM BEACH, FL 33411**

Zoning:	Industrial
Property Type:	Office /Warehouse
Space Available:	3,000 SF
Min Divisible:	3,000 SF
Base Monthly Rent:	\$7,595.00
Lease Rate PSF Annual:	\$23.50
Monthly Operating Expenses:	\$6.25
Lease Type:	NNN

A highly sought-after unit in a prime Palm Beach County location. This 3,000 SQ FT industrial space offers 1,000 SQ FT of well-appointed offices, including 3 private offices, a reception area, a kitchenette, and 2 restrooms. The remaining 2,000 SQ FT is a climate-controlled warehouse with 18' ceilings and a 14' x 14' overhead door. Additionally, there is a fenced and gated lot adjacent to the space which provides additional parking or outdoor storage. This space is very versatile and well-suited for a variety of business uses.

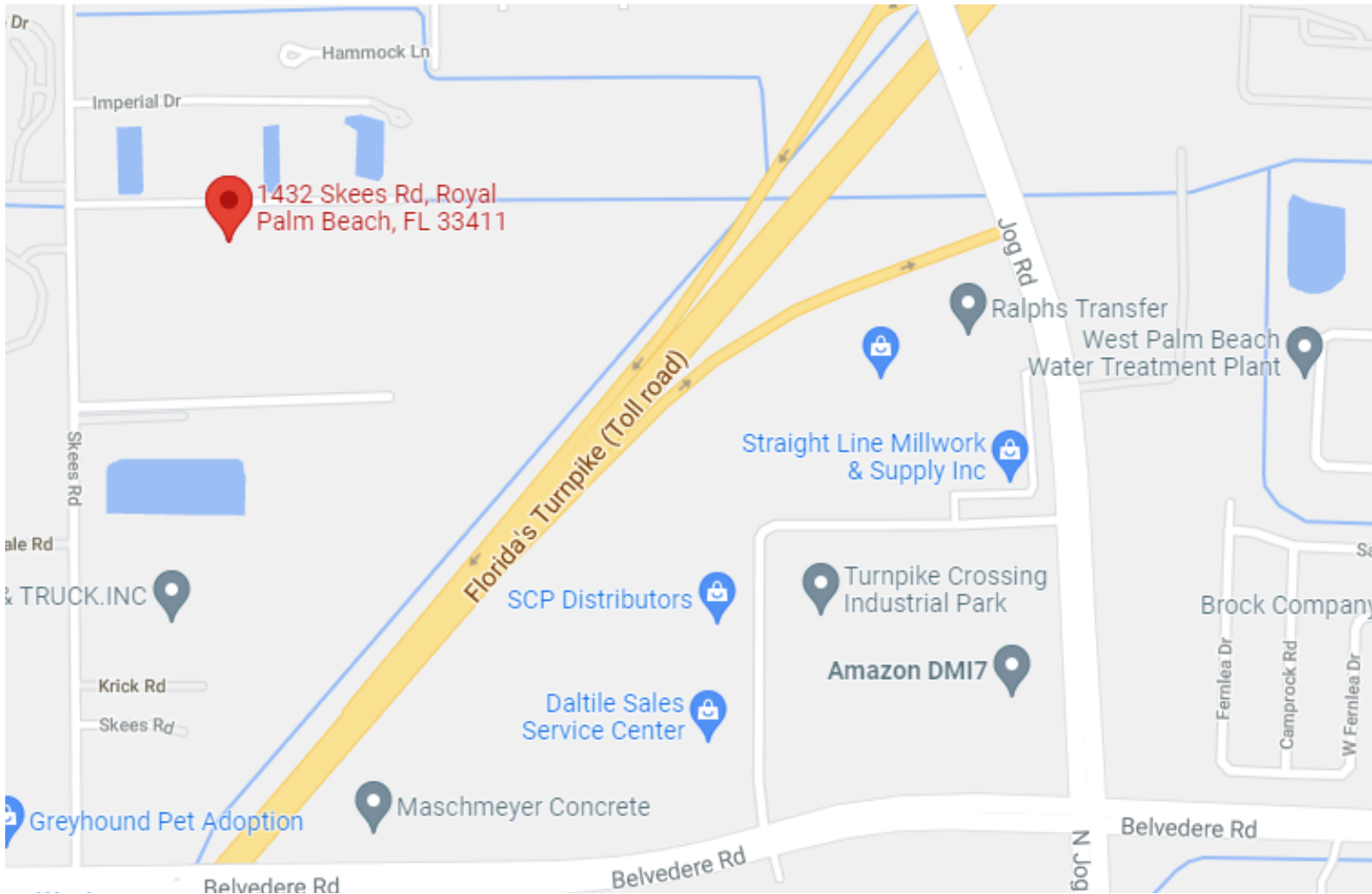


FLOOR PLAN





Great Location! 3 Phase electric! This industrial complex consists of 9 buildings totaling 73,000 sf. The buildings are CBS and metal construction. Each unit has a glass storefront entrance and 14 X 14 foot Grade Level Roll-up Doors. Ceiling heights are 18 to 21 ft Clear. Great Location for a variety of businesses! This complex is located on the east side of Skees Road in between Belvedere Road and Okeechobee Boulevard. Directly across from the Hippocrates Health Institute.



Contact: Devin Schmidt
devin@cri-re.com
561-793-9810



Cornerstone Realty, Inc
8233 Gator Lane, Suite 18 West Palm Beach, FL 33411
(561)793-9810