

LAND FOR SALE

Also Available
2015 S. Pontiac Way

2040 S. Oneida Street



2040 SOUTH ONEIDA STREET DENVER, COLORADO 80224

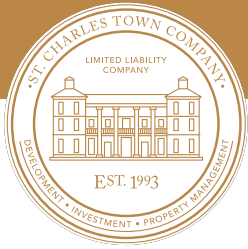
FOR MORE INFORMATION:

DAVID LEUTHOLD

C: 303.520.7729

dleuthold@stcharlestown.com

stcharlestown.com



2040 SOUTH ONEIDA STREET

ABOUT THE PROPERTY

This 19,200 SF or 0.44 Acre corner lot offers great potential for additional parking or potential for development of an owner user building.

The property sits on corner location in a commanding location near the E. Evans Avenue corridor in a high-density neighborhood. It has easy access from E. Evans Avenue and is in close proximity to major streets such as Monaco Street, Quebec Street, Leetsdale Parkway, and Parker Road.

PROPERTY DETAILS

SALE PRICE: \$600,000

LAND AREA	19,200 SF (0.44 Acre)
ZONING	S-CC-3X
TAXES	\$16,603 (2024)

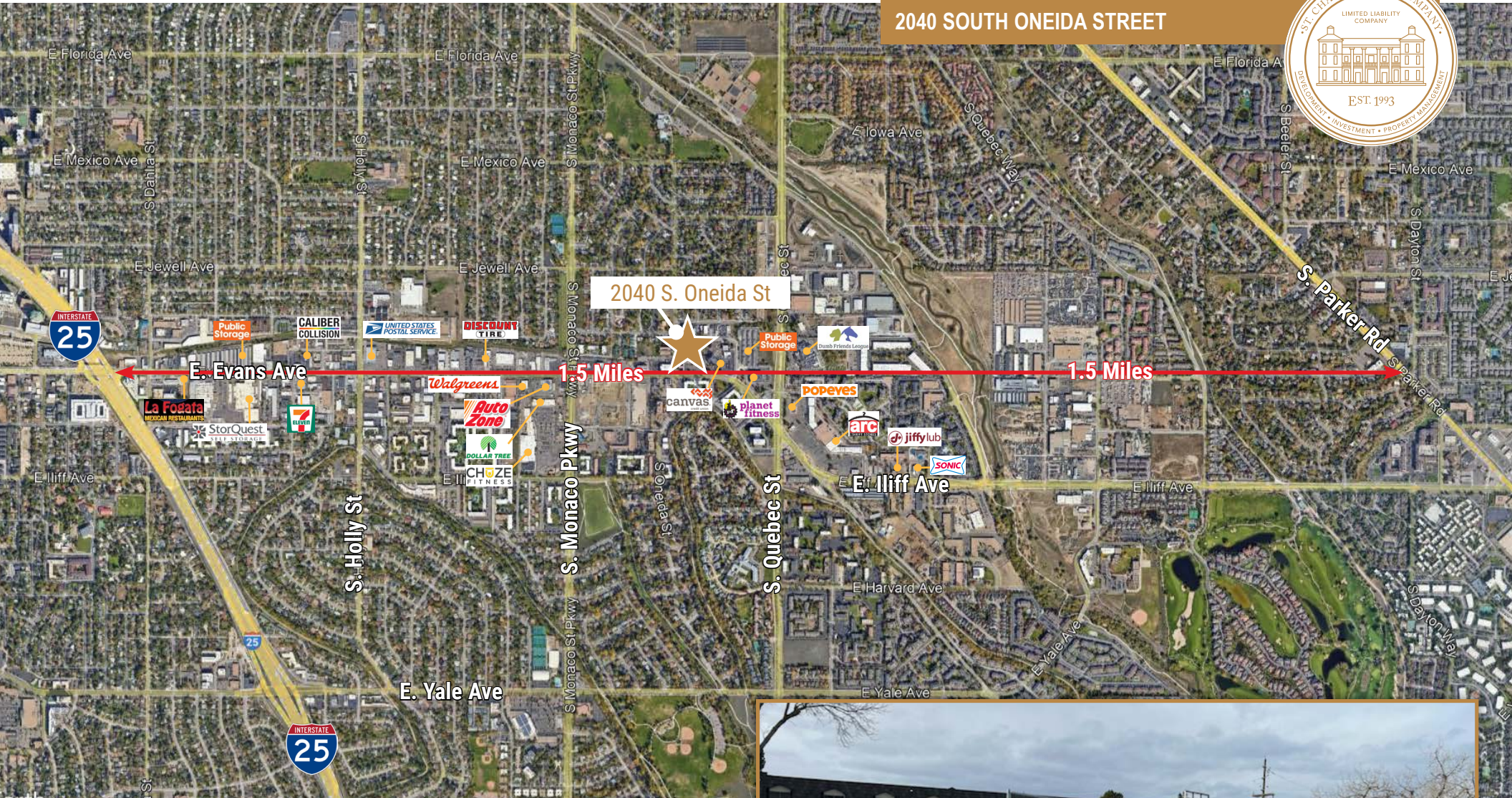
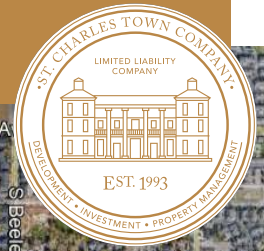
Building Available at 2015 S. Pontiac Way

SALE PRICE: \$3,999,000

BUILDING SF	17,823 SF
OCCUPANCY	100% (lease expires 12/31/24)
LAND AREA	41,451 SF (0.95 Acre)
ZONING	S-CC-3X
TAXES	\$59,166 (2024)



2040 SOUTH ONEIDA STREET



FOR MORE INFORMATION:
DAVID LEUTHOLD
 C: 303.520.7729
 dleuthold@stcharlestown.com
 stcharlestown.com

NO WARRANTY OR REPRESENTATION, EXPRESS OR IMPLIED, IS MADE AS TO THE ACCURACY OF THE INFORMATION CONTAINED HEREIN, AND THE SAME IS SUBMITTED SUBJECT TO ERRORS, OMISSIONS, CHANGE OF PRICE, RENTAL OR OTHER CONDITIONS, PRIOR SALE, LEASE OR FINANCING, OR WITHDRAWAL WITHOUT NOTICE, AND OF ANY SPECIAL LISTING CONDITIONS IMPOSED BY OUR PRINCIPALS. NO WARRANTIES OR REPRESENTATIONS ARE MADE AS TO THE CONDITION OF THE PROPERTY OR ANY HAZARDS CONTAINED THEREIN ARE ANY TO BE IMPLIED.

