

DAMES POINT PROFESSIONAL CENTER
1651 SOUTHSIDE CONNECTOR BLVD, SUITE 2
JACKSONVILLE, FL 32225

**SHELL SPACE
FOR SALE OR LEAS**



2,317 Square Feet

Lease Rate: \$25/sf/yr

Sale Price: \$350,000

Suite 2 is a dark shell office condo, located inside of Dames Point Professional Center off of Southside Blvd. The current tenants located in the center are: Pediatric Smiles and Today's Dentistry.

- **Excellent location offering easy access to I-295, I-95, and Jay Turner Butler Blvd.**
- **Restaurants and shopping nearby**

Eric Akers, Broker

Phone: (904)535-8465

william.e.akers@gmail.com



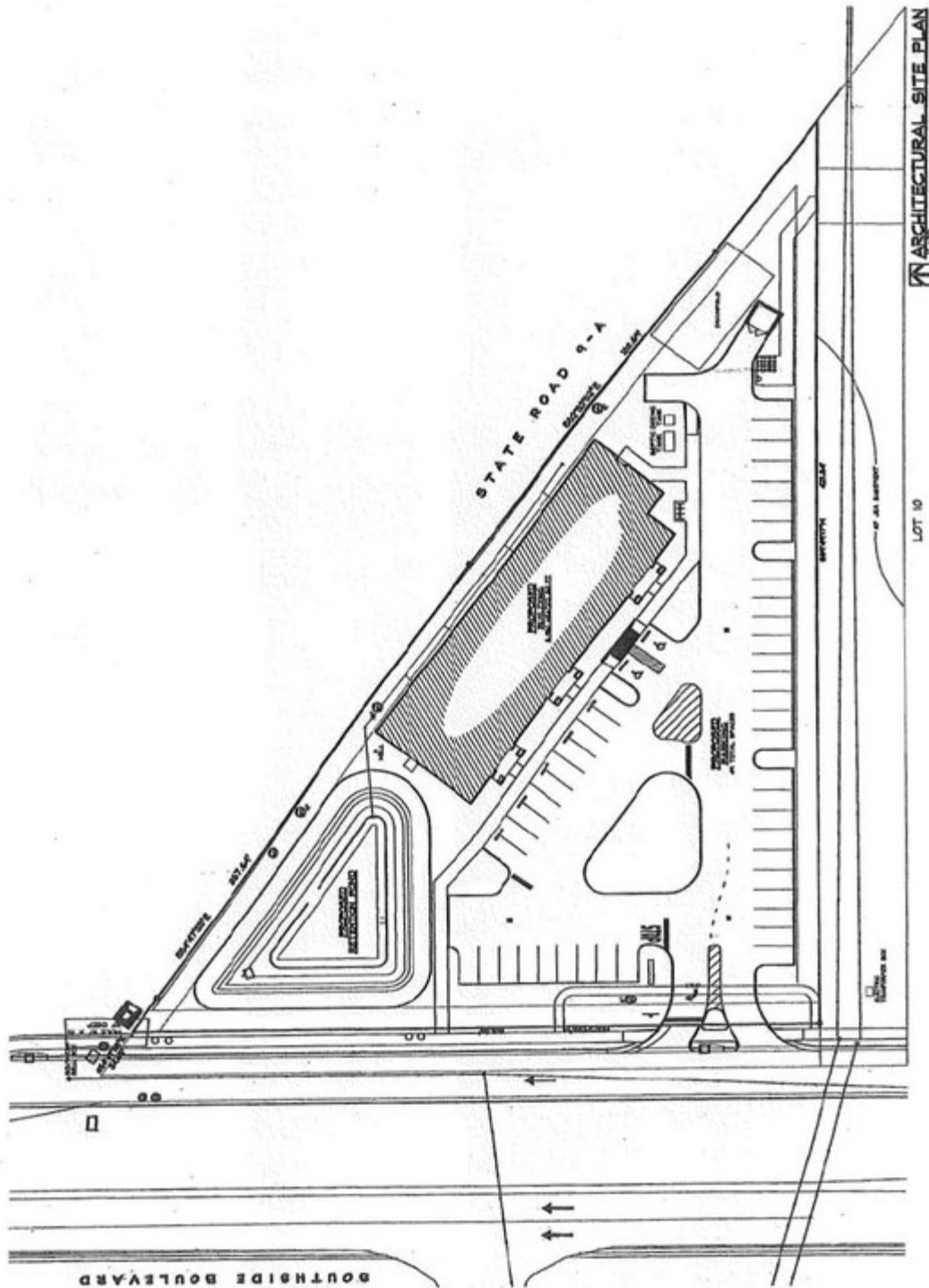
The information contained herein was obtained from reliable sources and is believed to be accurate. All information presented should be verified. All or part of the property may be withdrawn from the market at any time without notice.

DAMES POINT PROFESSIONAL CENTER

1651 SOUTHSIDE CONNECTOR BLVD, SUITE 2

JACKSONVILLE, FL 32225

SITE PLAN



Eric Akers, Broker

Phone: (904)535-8465

william.e.akers@gmail.com

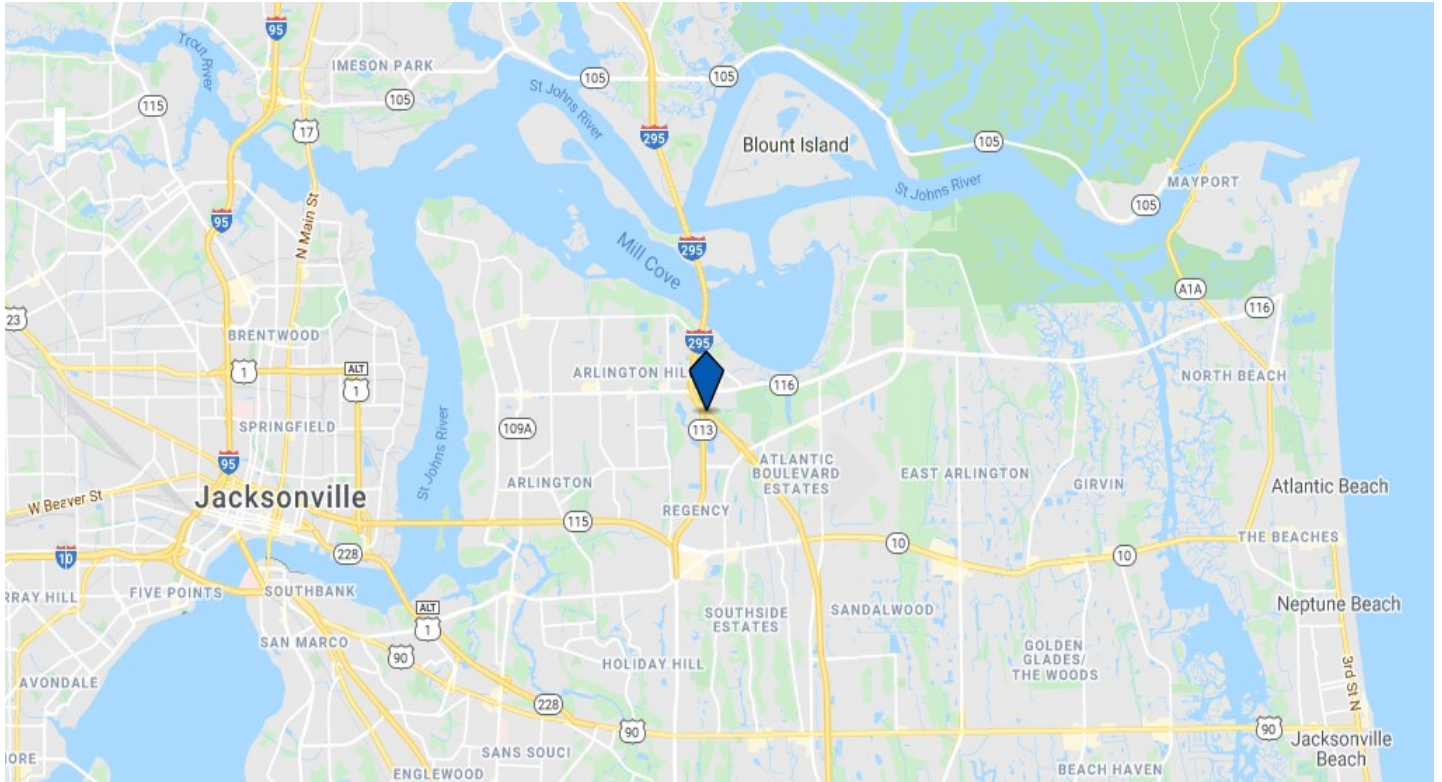


The information contained herein was obtained from reliable sources and is believed to be accurate. All information presented should be verified. All or part of the property may be withdrawn from the market at any time without notice.

DAMES POINT PROFESSIONAL CENTER

1651 SOUTHSIDE CONNECTOR BLVD, SUITE 2
JACKSONVILLE, FL 32225

PHOTOS & LOCATION MAP



Eric Akers, Broker

Phone: (904)535-8465

william.e.akers@gmail.com



The information contained herein was obtained from reliable sources and is believed to be accurate. All information presented should be verified. All or part of the property may be withdrawn from the market at any time without notice.