



# For sublease

8500 Steller Drive, Culver City, 3,700 - 7,848 RSF Available

**8500 Steller Drive / Culver City**

**Rate**

\$3.25/NNN

Nets are appx \$.43 per SF

**Size**

Total - 7,848 rsf

Building 6 - 4,148 rsf

Building 7 - 3,700 rsf

**Availability**

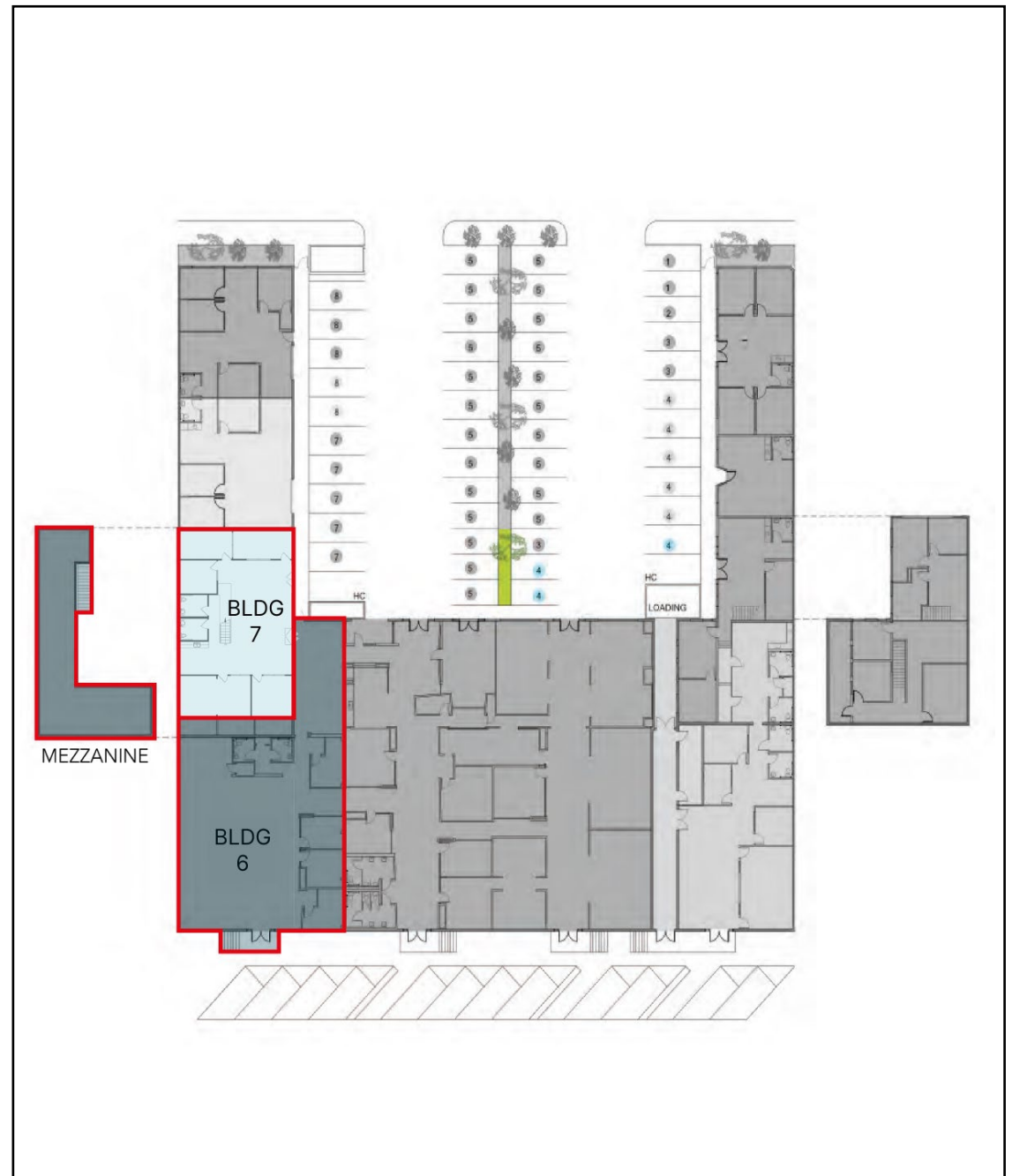
Immediate

**Term**

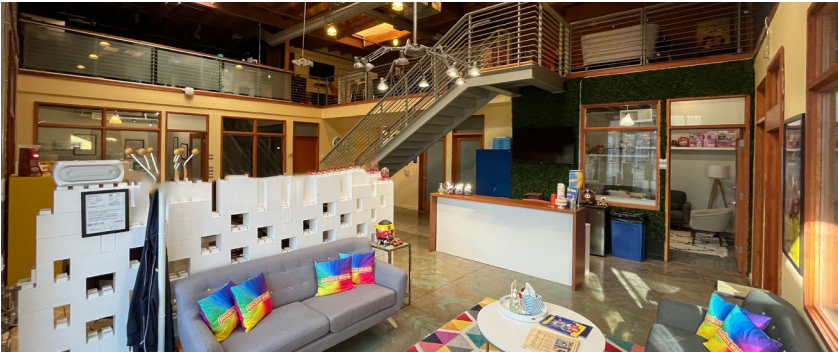
Through 1/31/28

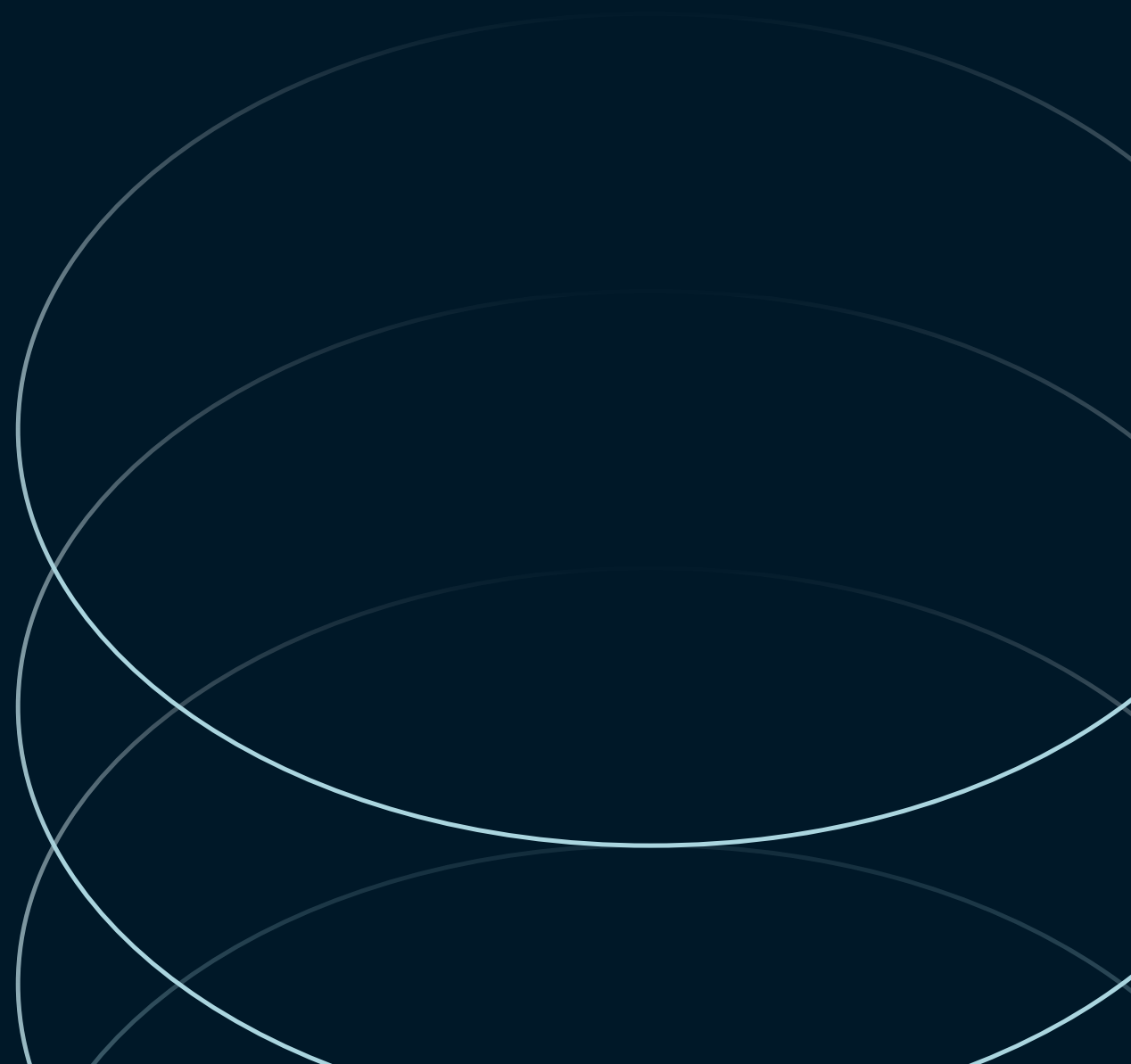
**Features**

- 20 parking spaces
- Creative space with a mix of private offices, open space, production and studio space
- Space can be delivered as a whole or demised
- Furniture negotiable
- Kitchen, skylights, polished concrete floors, private restrooms
- Stones throw away from Destroyer
- Longer term direct deal possible









**Josh Rand**

Lic. 01857606

[josh.rand@jll.com](mailto:josh.rand@jll.com)

310-943-5153

**Mac Burrige**

Lic. 01968091

[mac.burrige@jll.com](mailto:mac.burrige@jll.com)

630-415-6554