

1 FIRST FLOOR LIFE SAFETY PLAN
A1.12 SCALE: 1/8" = 1'-0"

SEAL

SEAL DATE- 3/18/19
REGISTRATION EXPIRES- 1/31/20

The professional services of the architect are undertaken for and are performed in the interest of the LC Construction. No contractual obligation is assumed by the architect for the benefit of any other person involved in the project.

The architect who sealed, signed and dated this document has not been employed to furnish construction administration services as defined in 24 Del.C. 303(c)



ARCHITECTURE • PLANNING
INTERIOR DESIGN • GRAPHIC ARTS

1309 VEALE ROAD
SUITE 22
WILMINGTON, DE 19810
302.478.3777

256 EAGLEVIEW BLVD.
SUITE 194
EXTON, PA 19341
610.640.9000

9.13.18

ISSUED FOR PERMIT

PROJECT NAME

CONNECTIONS
TENANT FIT-OUT
590 NAAMANS ROAD

NEW CASTLE COUNTY, DE

10.22.18 GENERAL REVISIONS

MARK DATE DESCRIPTION
REVISIONS

PROJECT NO: 2018-099

DRAWN BY: PBJ

CHK'D BY: KWW

DATE: 9.13.18

© COPYRIGHT 2018

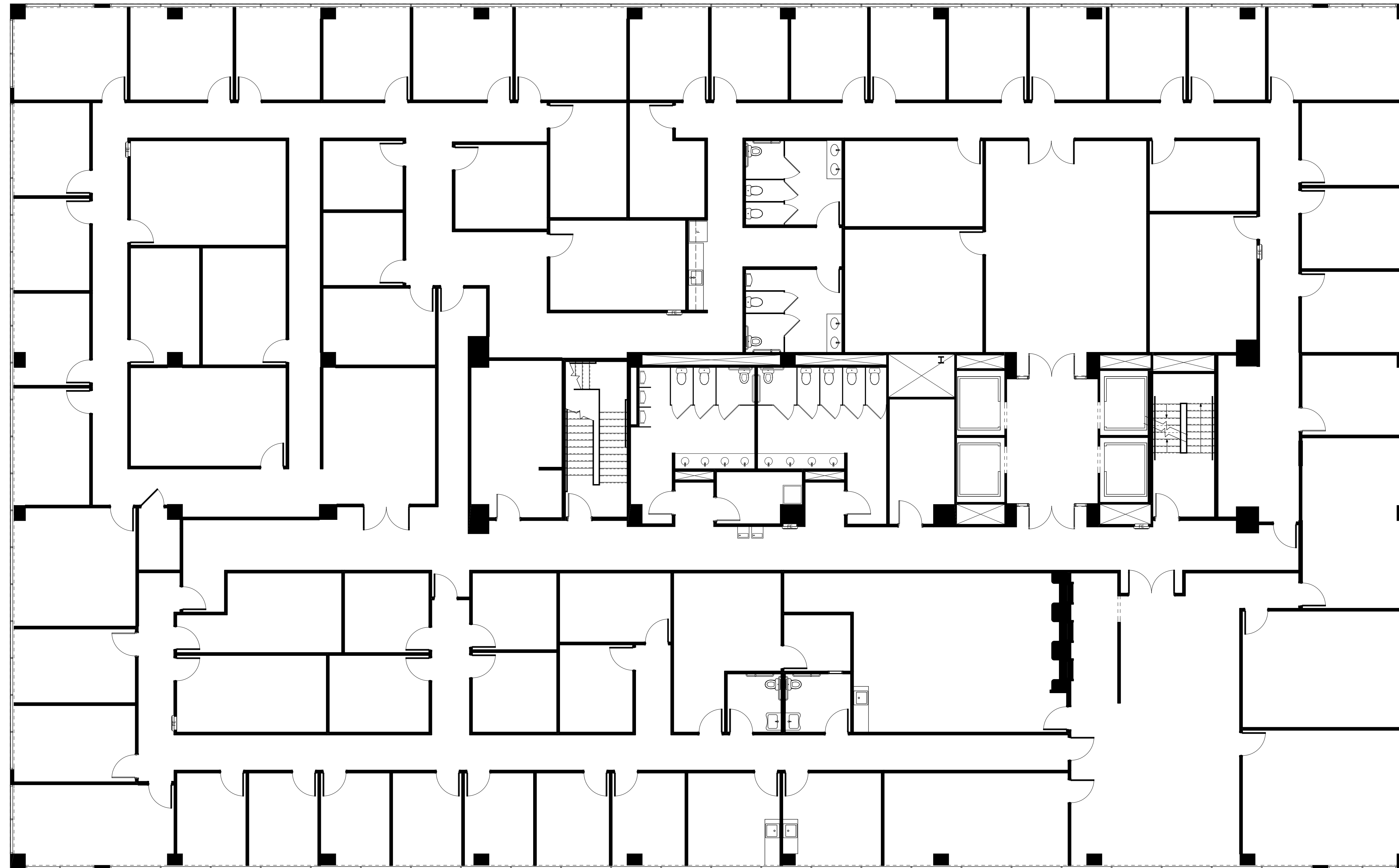
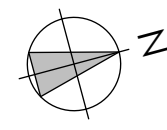
DRAWING NUMBER

A1.12

SHEET 22 OF 33

ISSUED FOR PERMIT

PLOT DATE 3/18/19



1 SECOND FLOOR LIFE SAFETY PLAN
A1.13 SCALE: 1/8" = 1'-0"

SEAL

SEAL DATE- 3/18/19
REGISTRATION EXPIRES- 1/31/20

The professional services of the architect are undertaken for and are performed in the interest of the LC Construction. No contractual obligation is assumed by the architect for the benefit of any other person involved in the project.
The architect who sealed, signed and dated this document has not been employed to furnish construction administration services as defined in 24 Del.C. 303(c)



ARCHITECTURE • PLANNING
INTERIOR DESIGN • GRAPHIC ARTS

1309 VEALE ROAD
SUITE 22
WILMINGTON, DE 19810
302.478.3777

256 EAGLEVIEW BLVD.
SUITE 194
EXTON, PA 19341
610.640.9000

9.13.18
ISSUED FOR PERMIT

PROJECT NAME

CONNECTIONS
TENANT FIT-OUT
590 NAAMANS ROAD

NEW CASTLE COUNTY, DE

10.22.18 GENERAL REVISIONS

MARK DATE DESCRIPTION
REVISIONS

PROJECT NO: 2018-099
DRAWN BY: PBJ
CHK'D BY: KWW
DATE: 9.13.18
© COPYRIGHT 2018

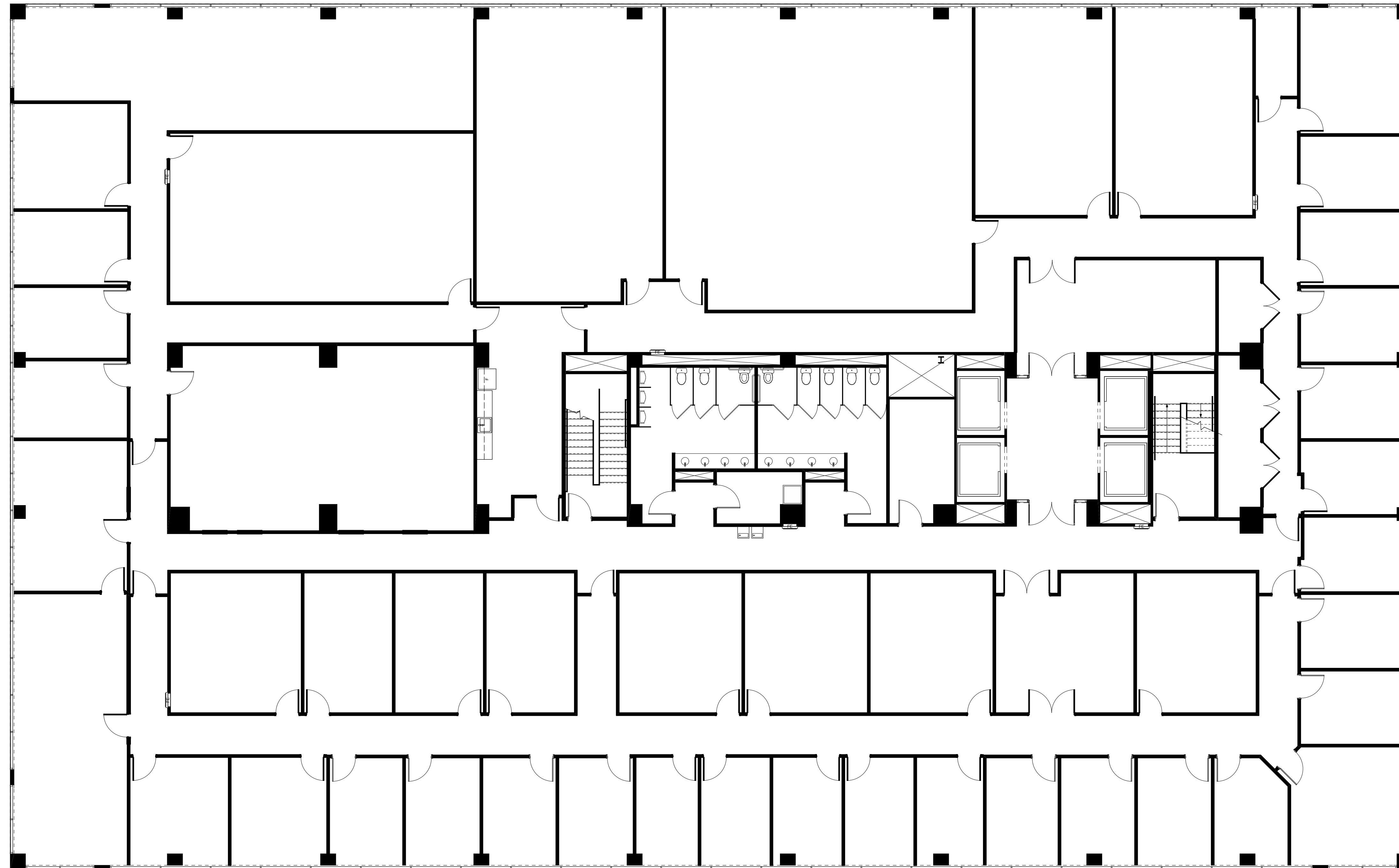
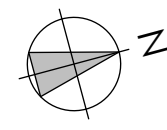
DRAWING NUMBER

A1.13

SHEET 23 OF 33

ISSUED FOR PERMIT

PLOT DATE 3/18/19



1 THIRD FLOOR LIFE SAFETY PLAN
A1.14 SCALE: 1/8" = 1'-0"

SEAL

SEAL DATE- 3/18/19
REGISTRATION EXPIRES- 1/31/20

The professional services of the architect are undertaken for and are performed in the interest of the LC Construction. No contractual obligation is assumed by the architect for the benefit of any other person involved in the project.
The architect who sealed, signed and dated this document has not been employed to furnish construction administration services as defined in 24 Del.C. 303(c)



ARCHITECTURE • PLANNING
INTERIOR DESIGN • GRAPHIC ARTS

1309 VEALE ROAD
SUITE 22
WILMINGTON, DE 19810
302.478.3777

256 EAGLEVIEW BLVD.
SUITE 194
EXTON, PA 19341
610.640.9000

9.13.18
ISSUED FOR PERMIT

PROJECT NAME

CONNECTIONS
TENANT FIT-OUT
590 NAAMANS ROAD

NEW CASTLE COUNTY, DE

10.22.18 GENERAL REVISIONS

MARK DATE DESCRIPTION
REVISIONS

PROJECT NO: 2018-099
DRAWN BY: PBJ
CHK'D BY: KWW
DATE: 9.13.18
© COPYRIGHT 2018

DRAWING NUMBER

A1.14

SHEET 24 OF 33

ISSUED FOR PERMIT

PLOT DATE 3/18/19