

FOR LEASE

950 JOHN DALY BOULEVARD DALY CITY, CALIFORNIA



Property Highlights

- Suite 100: ±4,249 SF
 - * Asking Rate: \$3.25/SF Full Service
 - * Available Now
 - * Rent can be phased in to accommodate smaller tenant
- Procuring Fee: \$2.00/SF/Year
- Walking Distance to Retail Amenities

PLEASE CONTACT:

Robert McSweeney

+1 650 759 0202

bob.mcsweeney@cbre.com

Lic. 00934240

Matt Murray

+1 408 781 9322

matt.murray@cbre.com

Lic. 02083830

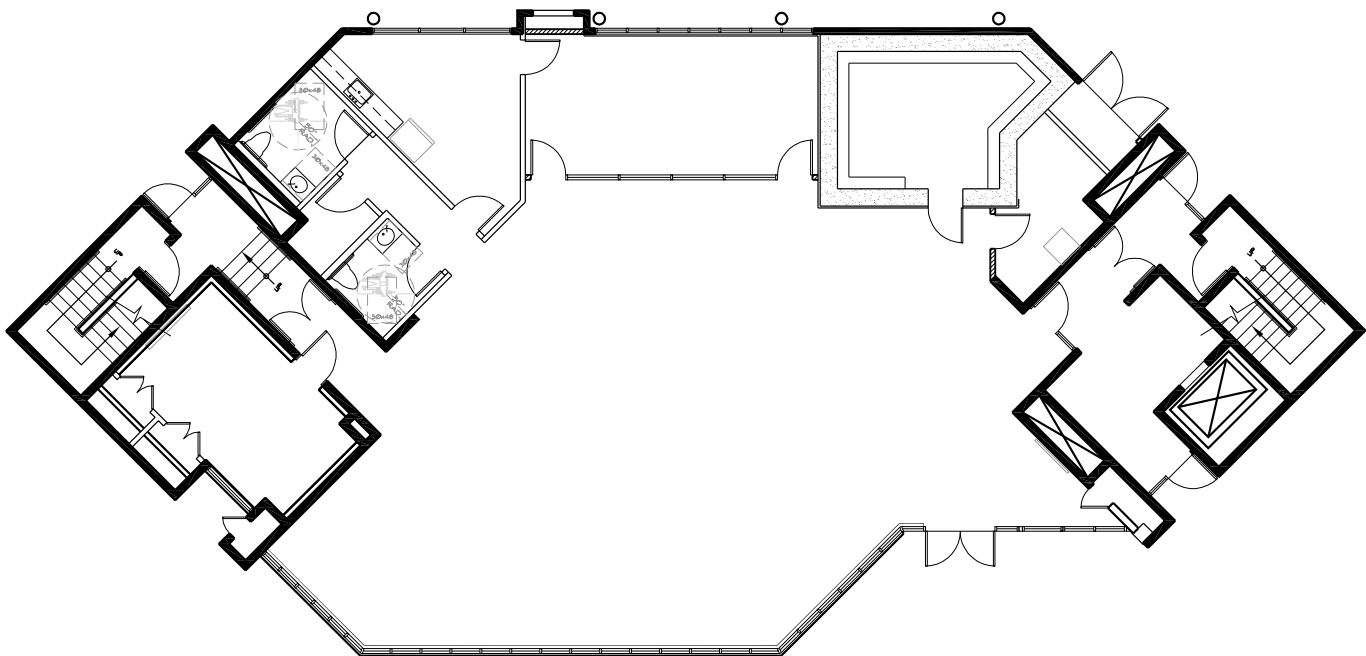
© 2025 CBRE, Inc. All rights reserved. This information has been obtained from sources believed reliable, but has not been verified for accuracy or completeness. You should conduct a careful, independent investigation of the property and verify all information. Any reliance on this information is solely at your own risk. CBRE and the CBRE logo are service marks of CBRE, Inc. All other marks displayed on this document are the property of their respective owners, and the use of such logos does not imply any affiliation with or endorsement of CBRE. Photos herein are the property of their respective owners. Use of these images without the express written consent of the owner is prohibited.

FOR LEASE

950 JOHN DALY BLVD DALY CITY, CALIFORNIA

FLOOR PLAN

SUITE 100 (±4,249 SF)



PLEASE CONTACT:

Robert McSweeney

+1 650 759 0202
bob.mcsweeney@cbre.com
Lic. 00934240

Matt Murray

+1 408 781 9322
matt.murray@cbre.com
Lic. 02083830