

3840 E. EIGHT MILE ROAD
DETROIT, MICHIGAN

RETAIL FOR SALE
5,516 Square Feet Available



**SIGNATURE
ASSOCIATES**
KNOW SIGNATURE | KNOW RESULTS



PROPERTY FEATURES

- 5,516 square feet available
 - 3,025 square foot retail building
 - 2,491 square foot auto garage
- 10' ceiling height
- Zoned B-4
- Easy access to I-75 and minutes from I-696
- Completely updated and ready for buildout
- Sale Price: \$385,000 (\$69.80/sqft)



For more information, please contact:

JOE STACK
(248) 359 0615
jstack@signatureassociates.com

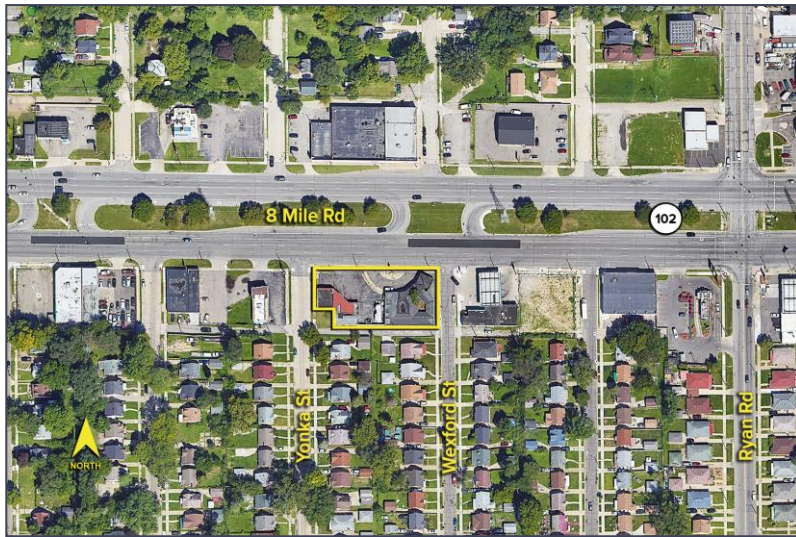
CHRIS MONSOUR
(248) 948 0107
cmonsour@signatureassociates.com

SIGNATURE ASSOCIATES
One Towne Square, Suite 1200
Southfield, MI 48076
www.signatureassociates.com

3840 E. Eight Mile Road – Detroit, Michigan

Retail For Sale

5,516
Square Feet
AVAILABLE

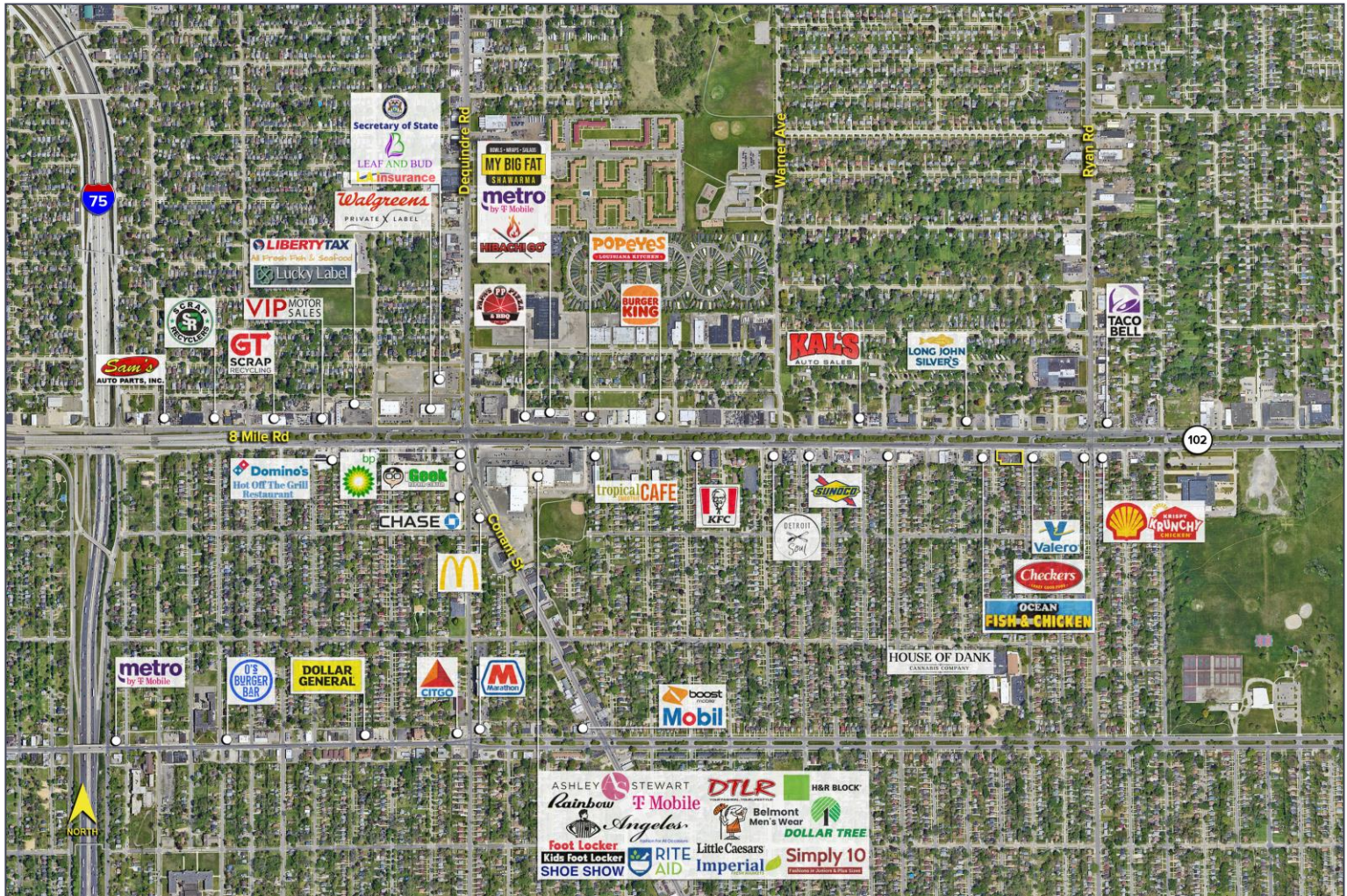


DEMOGRAPHICS

	POPULATION	MED. HH INCOME
1 MILE	19,657	\$52,798
3 MILE	158,467	\$52,812
5 MILE	376,859	\$64,102

TRAFFIC COUNTS (TWO-WAY)

66,251	8 Mile Rd. W. of Ryan Rd.
65,727	8 Mile Rd. E. of Ryan Rd.
9,104	Ryan Rd. N. of 8 Mile Rd.
14,150	Ryan Rd. S. of 8 Mile Rd.



For more information, please contact:

JOE STACK
(248) 359 0615
jstack@signatureassociates.com

CHRIS MONSOUR
(248) 948 0107
cmonsour@signatureassociates.com

SIGNATURE ASSOCIATES
One Towne Square, Suite 1200
Southfield, MI 48076
www.signatureassociates.com