

1908 W. 42nd Street, Suite D Sioux Falls, SD 57105

Lease Rate	\$1,500.00/MO GROSS PLUS UTILITIES
Suite Size	1,560 SF

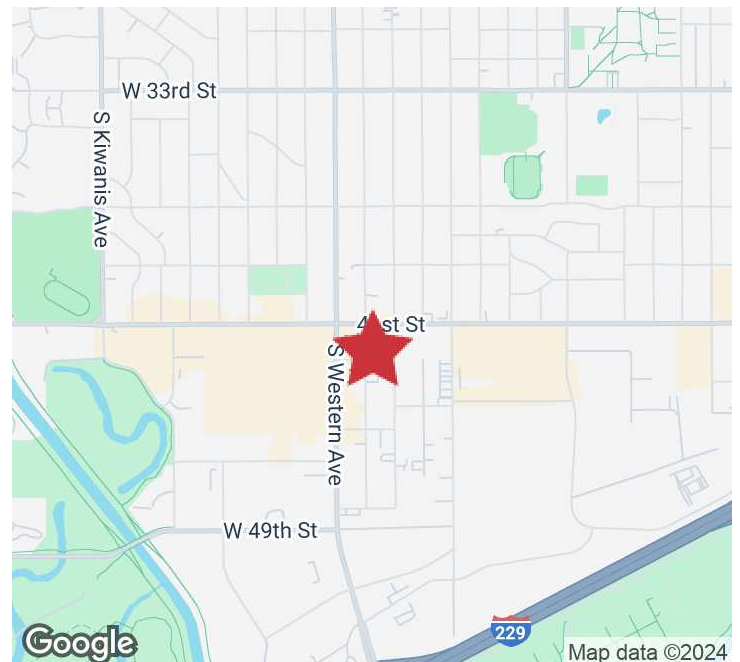
PROPERTY HIGHLIGHTS

- Excellent service-retail or office location
- Two offices and open work/retail area
- In-suite restrooms
- Monument and window signage available
- Suite includes 5 exclusive parking spaces

LOCATION DESCRIPTION

Located just east of Western Avenue, near busy intersection (41st Street & Western Avenue)

Area neighbors include: Western Mall, Scheel's, Mattress Firm, Graham Tire



MARCUS MAHLEN, CCIM, SIOR
Chief Business Development Officer, SVP
mmahlen@naisiouxfalls.com
605.228.9744

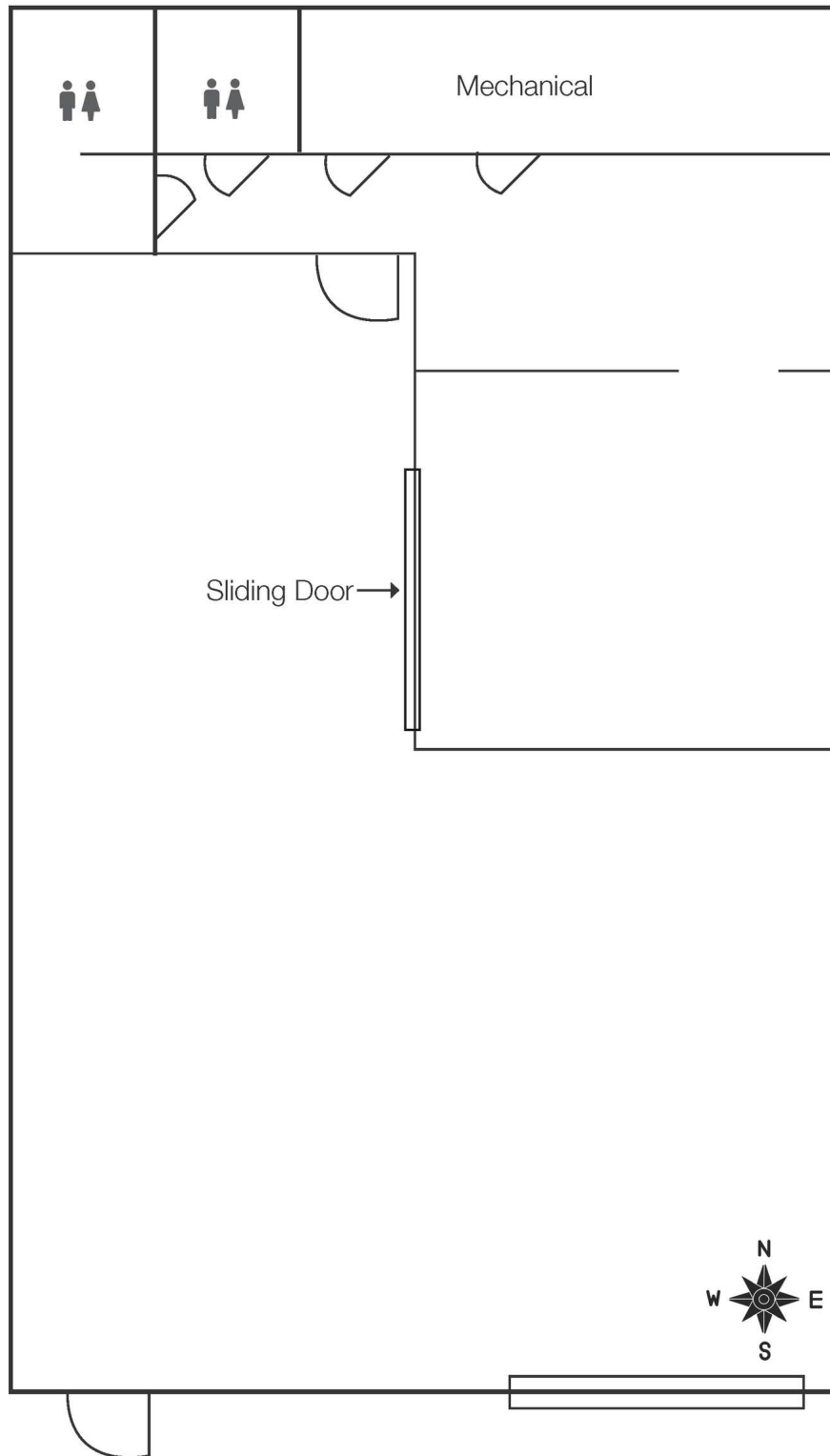
2500 W. 49th St. Suite 100
Sioux Falls, SD 57105
605.357.7100
naisiouxfalls.com

FLOOR PLAN

1908 W 42ND STREET, SUITE D
Sioux Falls, SD 57105

FOR LEASE

Office/Retail Suite

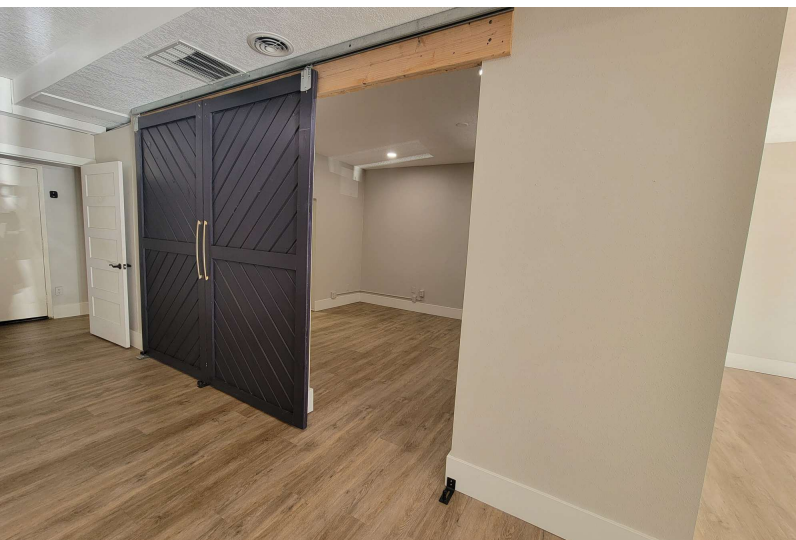


PHOTOS

1908 W 42ND STREET, SUITE D
Sioux Falls, SD 57105

FOR LEASE

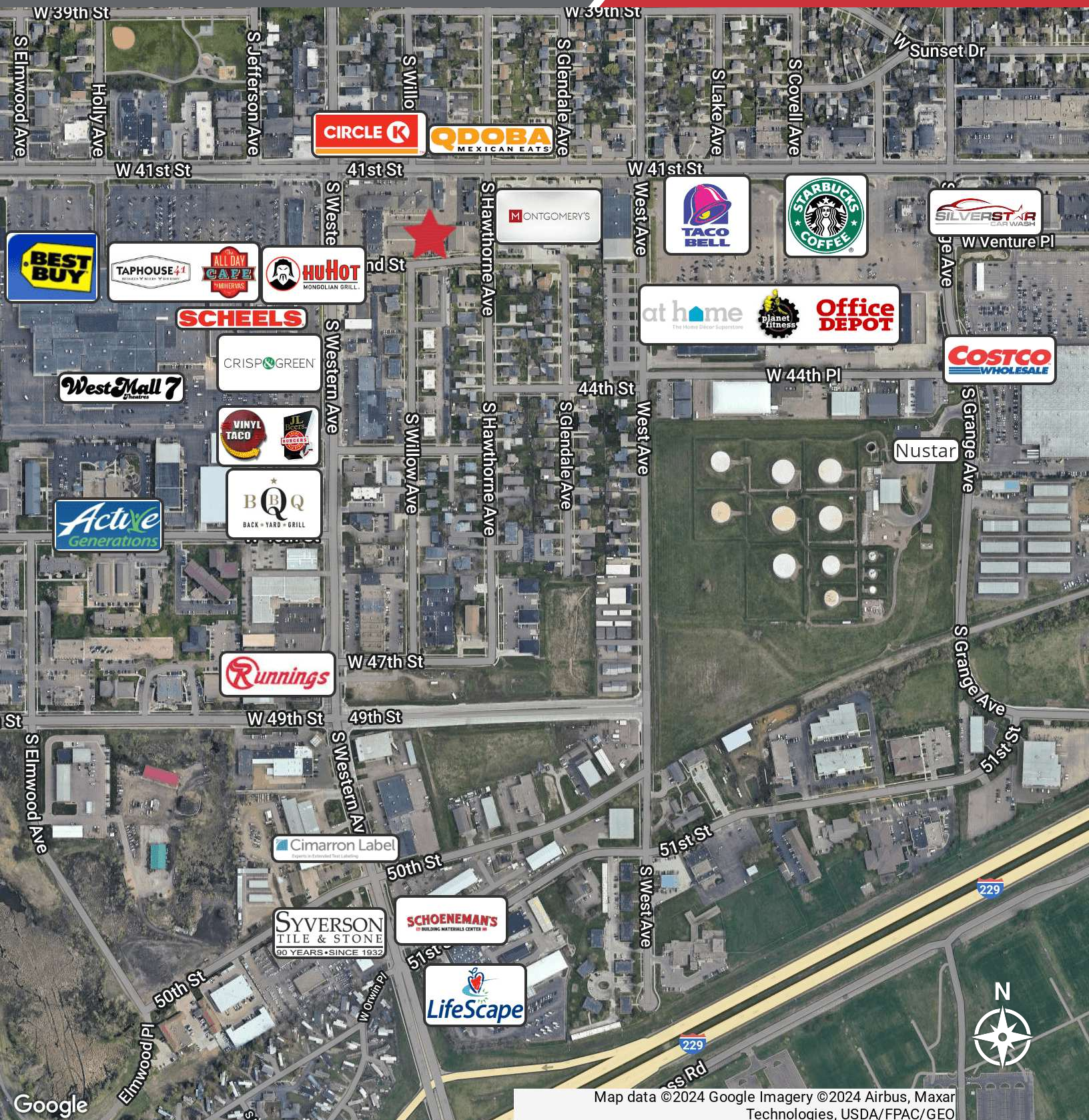
Office/Retail Suite



AERIAL

1908 W 42ND STREET, SUITE D
Sioux Falls, SD 57105

FOR LEASE
Office/Retail Suite



Map data ©2024 Google Imagery ©2024 Airbus, Maxar Technologies, USDA/FPAC/GEO