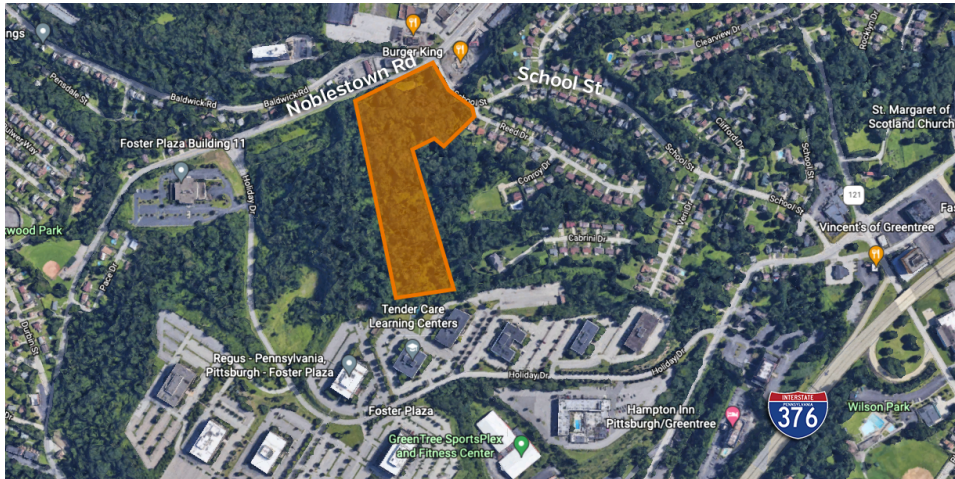


# Greentree Development Land

## School Street And Noblestown Road Pittsburgh, PA 15205



### OFFERING SUMMARY

Sale Price:	\$1,700,000
Lot Size:	5-15 Acres
Zoning:	Office Commercial

### PROPERTY OVERVIEW

SVN | Three Rivers Commercial Advisors is pleased to present for sale the largest remaining development site in Greentree with 2 to 15 acres available.

Highly visible with easy access to major highways. Less than 1 mile from Parkway West. Near highly populated residential areas.

### PROPERTY HIGHLIGHTS

- Ideal for medical/personal care facility, retail, office, multi-family, or flex space
- Over 550 feet of frontage onto Noblestown Road

**Richard L. Beynon**  
412.536.5036 | 412.298.2236  
rbeynon@svn.com

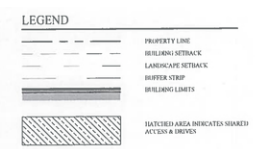
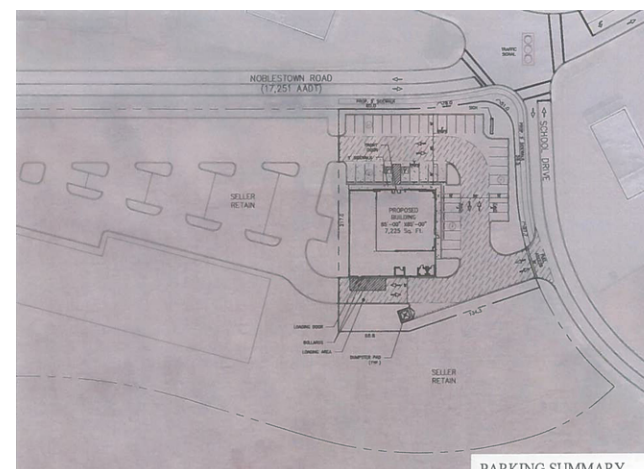
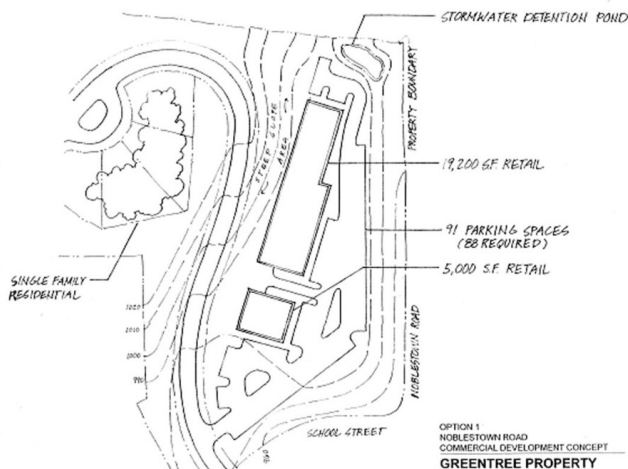
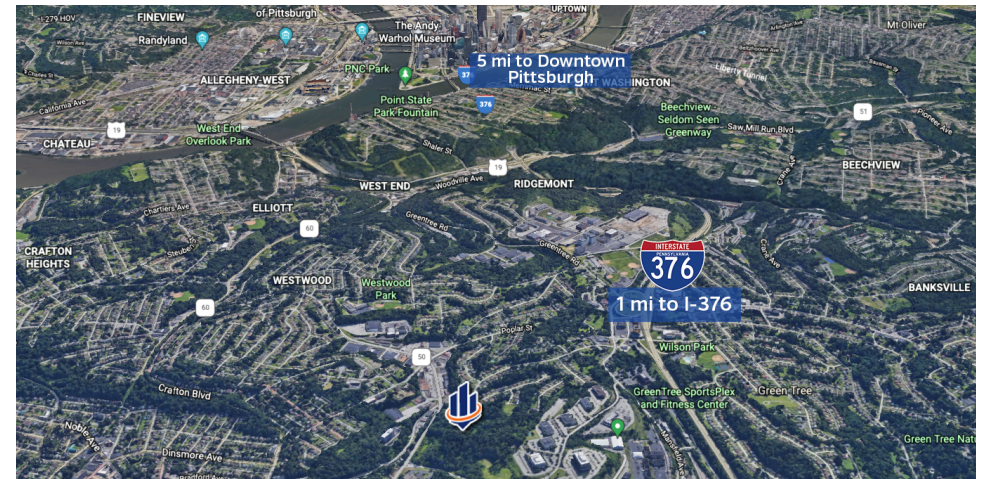
The information presented here is deemed to be accurate, but it has not been independently verified. We make no guarantee, warranty or representation. It is your responsibility to independently confirm accuracy and completeness. All SVN® offices are independently owned and operated.



# Greentree Development Land

## 15 Acres | Greentree

School and Noblestown Road, Pittsburgh, PA 15205



- GENERAL NOTES**
- EXISTING BOUNDARY AND SITE CONDITIONS INFORMATION TAKEN FROM GOOGLE EARTH PRO
  - RETAIL IS PERMITTED IN THIS ZONE



Richard L. Beynon  
412.536.5036 | 412.298.2236  
rbeynon@svn.com



The information presented here is deemed to be accurate, but it has not been independently verified. We make no guarantee, warranty or representation. It is your responsibility to independently confirm accuracy and completeness. All SVN® offices are independently owned and operated.