

AVAILABLE 1,772 SF



SONIC  
MUSIC MASTERS

weight  
watchers

Urgent  
Care

PHOENIX  
CHILDREN'S

VIXXO

the herb box  
catering | eatery | market

SITE

NUTRITION  
Head2Toe

Signature SALON STUDIOS

FITNESS 4 HOME  
& COMMERCIAL FITNESS  
superstore

black ★ rock  
coffee bar

hopdoddy

CHIPOTLE

MOD

WELLS FARGO

McDonald's

SAFEWAY

MIDFIRST BANK

Harkins THEATRES

ESPORTA

CVS

Filiberto

Starbucks

Shea Boulevard

70th Street

FOR LEASE

Retail Opportunity at Block 7000

7000 East Shea Blvd | Scottsdale, AZ



# Retail Opportunity at Block 7000

7000 East Shea Blvd | Scottsdale, AZ



**FOR LEASE**

1,772 SF

Available

Contact  
Broker

Rate

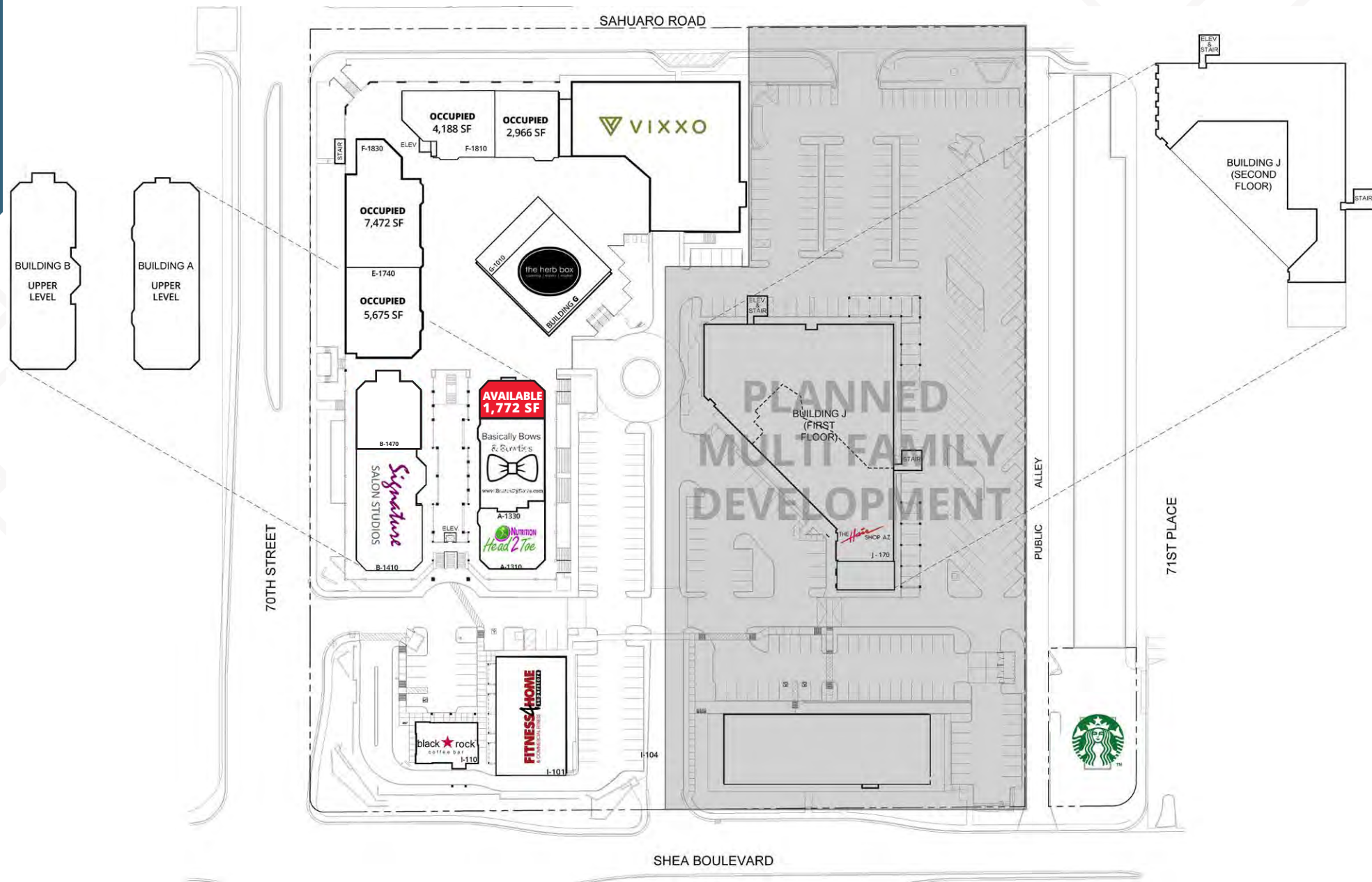
## ABOUT THE PROPERTY

- 1,772 SF former bakery space available with FF&E
- Redeveloped mixed-use class A shopping center containing both office and retail
- Ample surface & garage parking
- Over \$14 MM invested in property upgrades
- Dense infill trade area with over 11,045 in daytime population with \$131,068 average household income
- Major East/West thoroughfare with over 42K cars per day on Shea Blvd



# Retail Opportunity at Block 7000

7000 East Shea Blvd | Scottsdale, AZ





# Retail Opportunity at Block 7000

7000 East Shea Blvd | Scottsdale, AZ



# Retail Opportunity at Block 7000

7000 East Shea Blvd | Scottsdale, AZ



## DEMOGRAPHIC HIGHLIGHTS (2023)

### 1 MILE

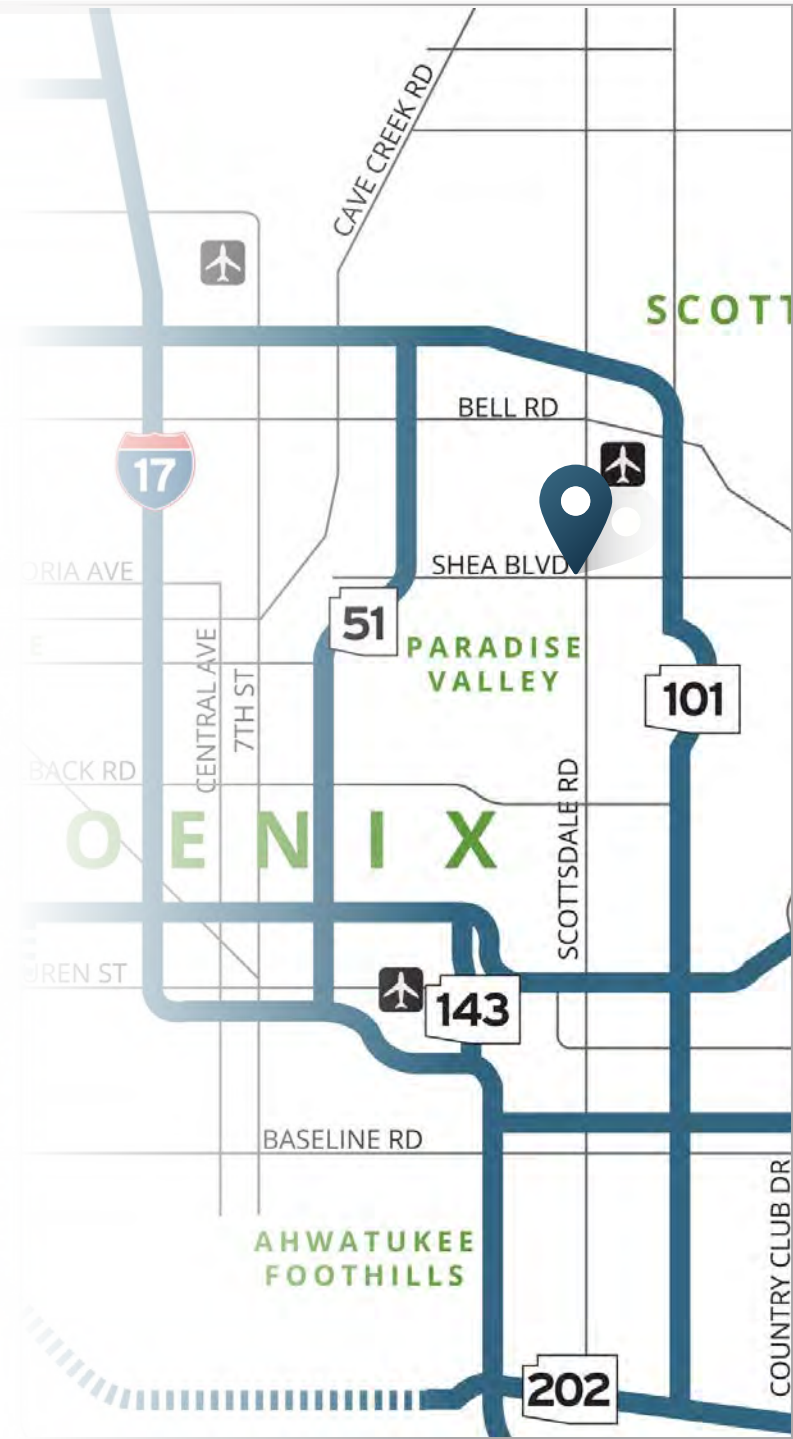
7,235	7,318	\$163,368	11,350
2023 Population	2028 Population	Average HH Income	Daytime Population

### 3 MILES

60,543	62,629	\$182,718	126,486
2023 Population	2028 Population	Average HH Income	Daytime Population

### 5 MILES

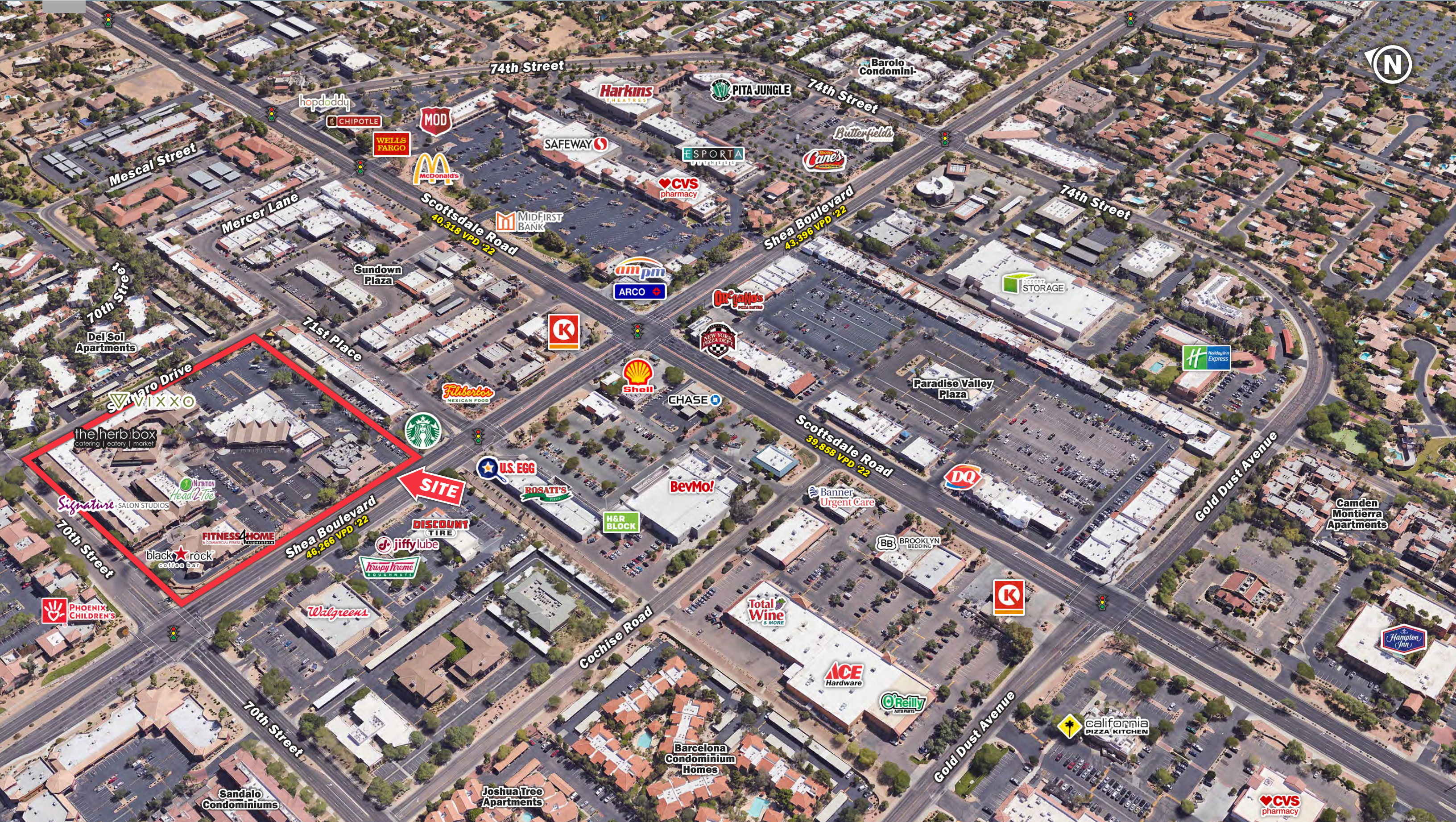
189,296	193,344	\$157,599	310,283
2023 Population	2028 Population	Average HH Income	Daytime Population





Block 7000

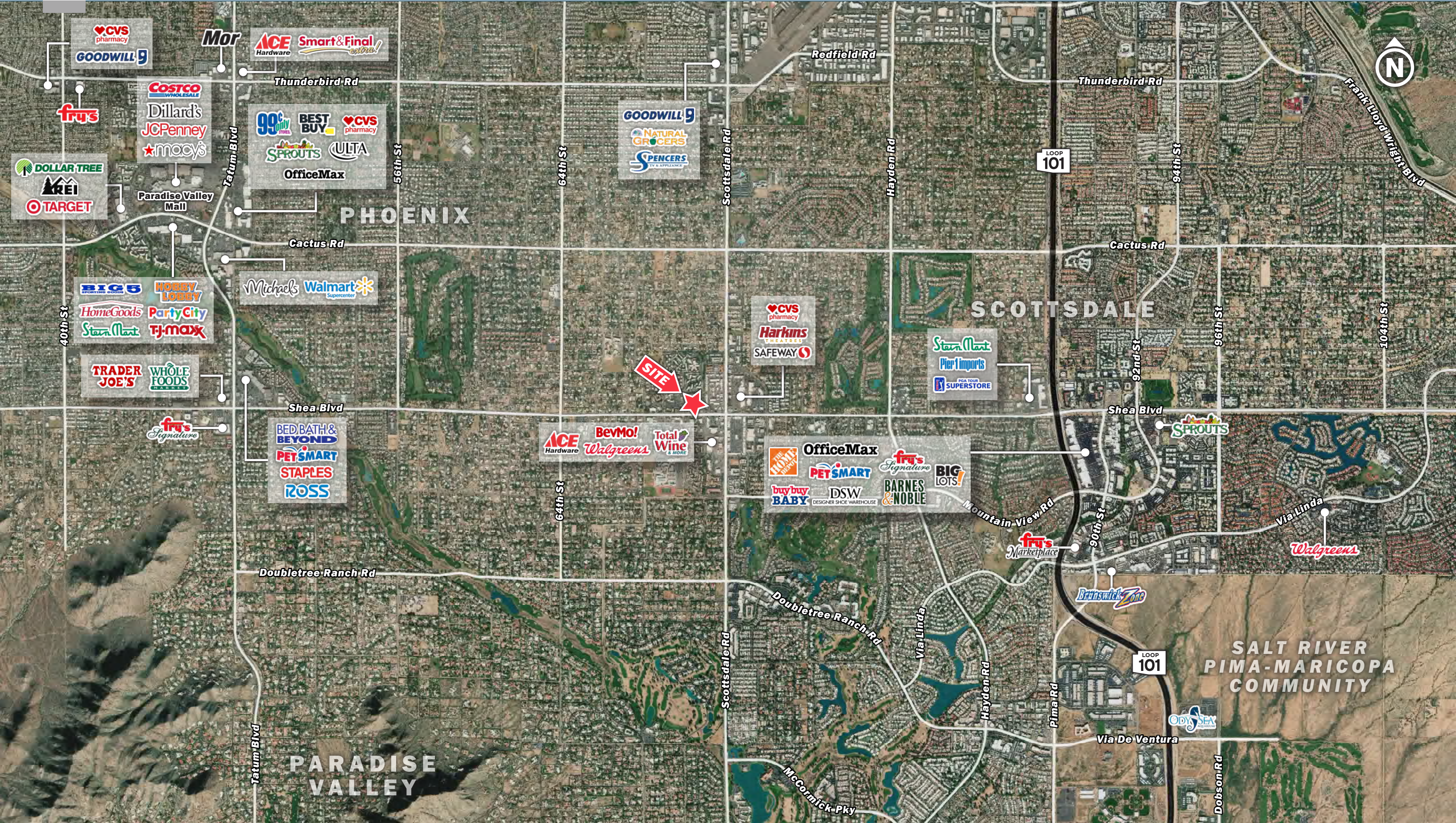
7000 East Shea Blvd | Scottsdale, AZ





Block 7000

7000 East Shea Blvd | Scottsdale, AZ







**SRS**

3131 E Camelback Road, Suite 110  
Phoenix, AZ 85016  
602.682.6000

**SCOTT ELLSWORTH**

602.682.6063  
scott.ellsworth@srsre.com

**BRIAN POLACHEK**

602.682.6045  
brian.polachek@srsre.com

**SRSRE.COM**

© SRS

The information presented was obtained from sources deemed reliable;  
however SRS does not guarantee its completeness or accuracy.