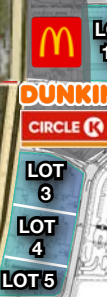


2845 69TH ST E

FOR LEASE · PRIME CORNER RETAIL OUTPARCELS
2845 69TH ST E · PALMETTO, FL 34221

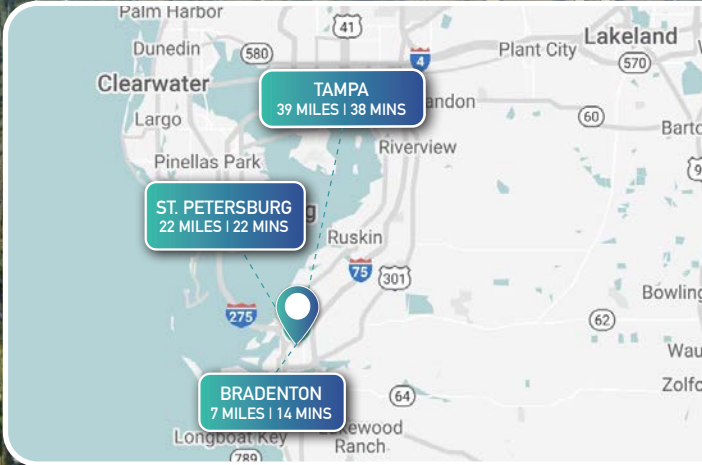
47,000± VPD

33,500± VPD



DR HORTONS
300± UNITS

LOT	AVAILABILITY	SIZE
LOT 1B	AVAILABLE	2.05 AC
LOT 3	AVAILABLE	1.48 AC
LOT 4	AVAILABLE	1.54 AC
LOT 5	AVAILABLE	1.04 AC
LOT 6	AVAILABLE	2.30 AC
LOT 7	AVAILABLE	1.33 AC



115,000± VPD

93



CONTACT US:

DARREN MOORE
Senior Advisor
239.334.3040 Ext.208
darren.moore@trinitycre.com

TY HENSLEY
Senior Advisor
239.334.3040 ext.208
ty.hensley@trinitycre.com

TRINITY.FIELDS
Transaction Coordinator
239.334.3040 ext. 208
trinity.fields@trinitycre.com

2845 69TH ST E




FOR LEASE • PRIME CORNER RETAIL OUTPARCEL
2845 69TH ST E • PALMETTO, FL 34221

PROPERTY FEATURES

PRICE	CALL FOR DETAILS
ACREAGE	9.74 AC
ZONING	Commercial (Manatee County)
LOCATION	The subject site is located on the SEC of US 41 N and 69th ST E.

2024 DEMOGRAPHICS

2845 69TH ST E

	1 MILE	3 MILE	5 MILE
 AVERAGE H.H. INCOME	\$101,540	\$117,564	\$100,988
 POPULATION	5,118	32,942	73,452
 EMPLOYMENT DENSITY	614	5,202	16,536



trinitycre.com
9450 Corkscrew Palms Cir • Suite 101 • Estero, FL 33928
© 2024 Trinity Commercial Group
This information is considered accurate, but not guaranteed.

