



# THE NEW FACE OF MODERN INDUSTRIAL

LEASING BY  
 CUSHMAN &  
WAKEFIELD



STATE-OF-THE-ART  
INDUSTRIAL BUILDINGS  
TOTALING **OVER 200,000 SF**

OWNED & MANAGED BY



PANATTONI®



**PRIME SITE**  
IN LAKE COUNTY



**±200,000 SF**  
AVAILABLE



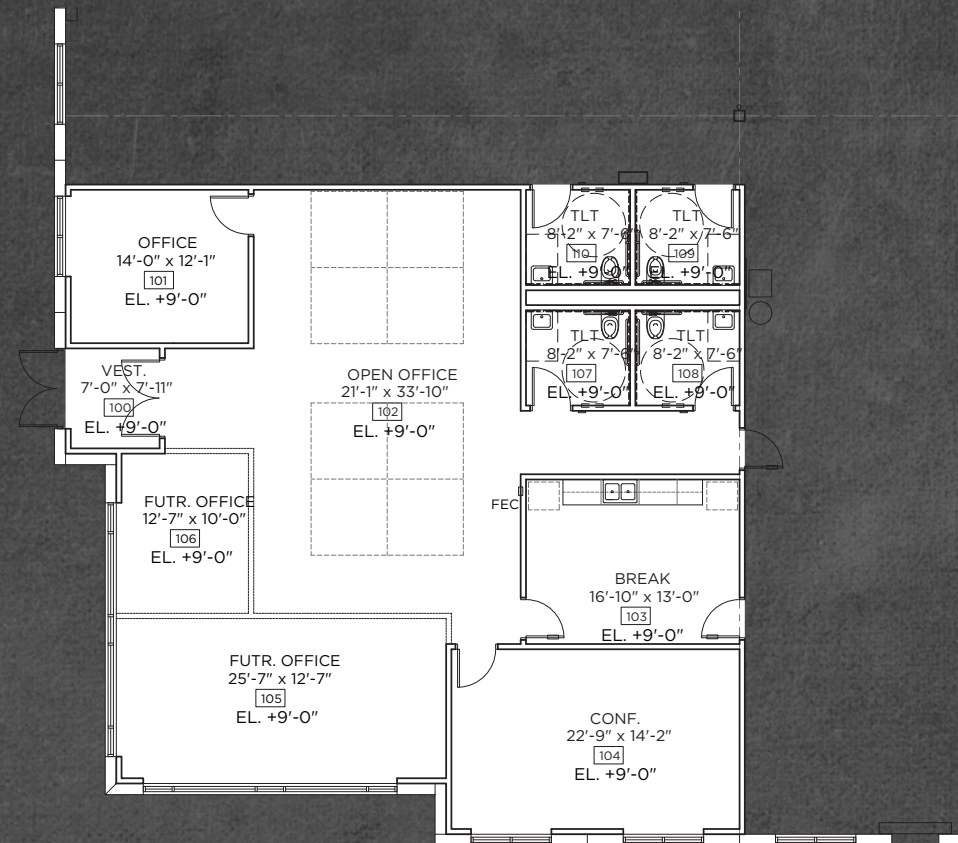
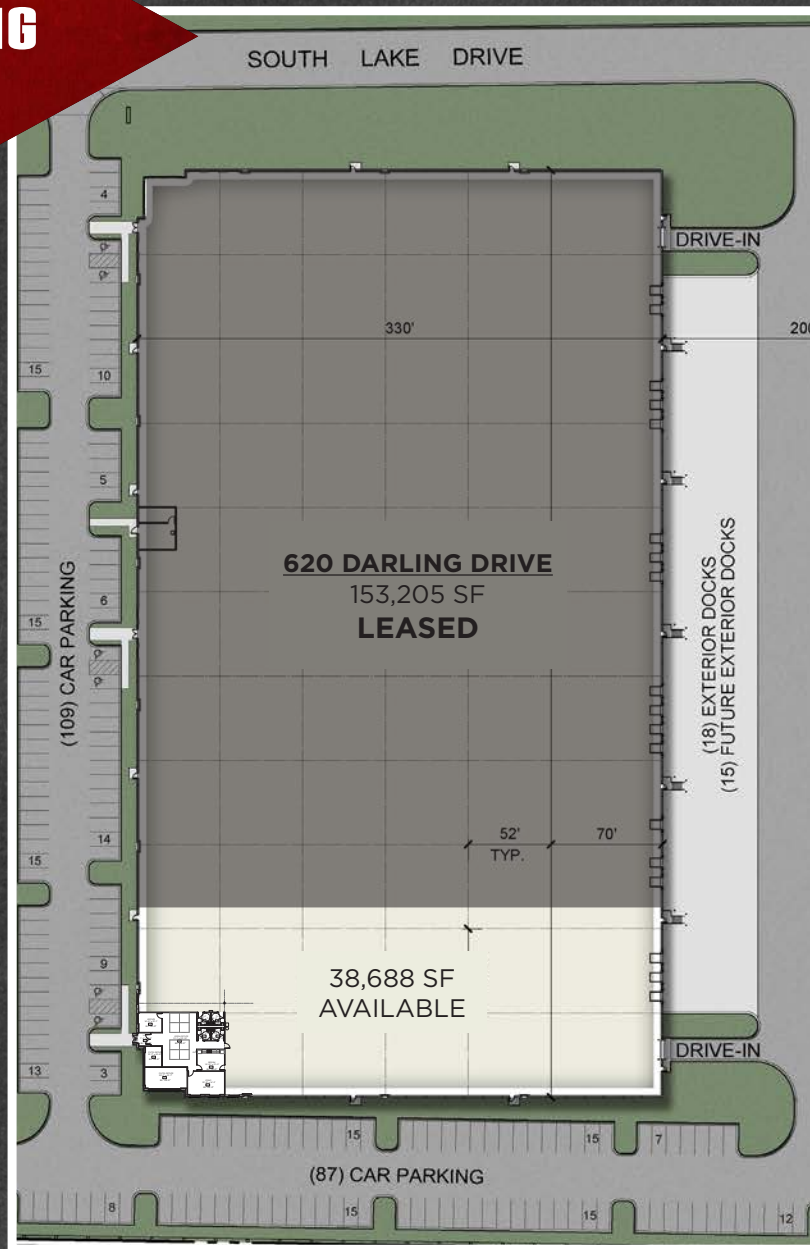
**32'**  
CLEAR HEIGHT



**HIGH-IMAGE**  
INDUSTRIAL BUILDINGS



# 620 DARLING DRIVE



**191,893 SF**  
BUILDING SIZE

**38,688 SF**  
AVAILABLE

**32' CLEAR**  
CEILING HEIGHT

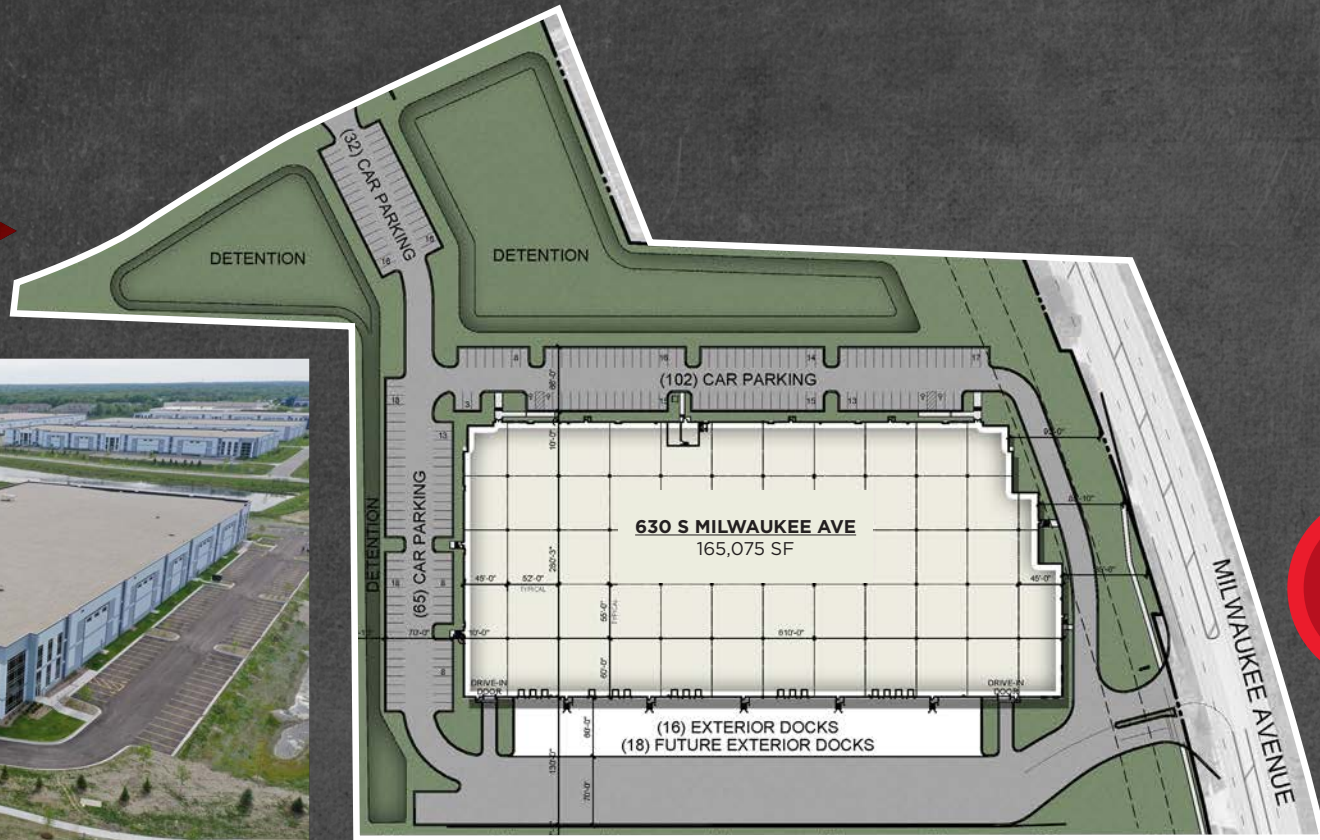
**46 SPACES**  
CAR PARKING

**3**  
EXTERIOR LOADING DOCKS

**2,518 SF**  
SPEC OFFICE



# 630 S MILWAUKEE AVENUE



**30,990  
VEHICLES  
PASSING  
DAILY**

**165,075 SF**  
BUILDING SIZE

**165,075 SF**  
AVAILABLE (DIVISIBLE)

**±13.27 ACRES**  
SITE SIZE

**32' CLEAR**  
CEILING HEIGHT

**199 SPACES**  
CAR PARKING

**16**  
EXTERIOR LOADING DOCKS  
(EXPANDABLE)

**2**  
DRIVE-IN DOORS





Access to two 4-way interchanges off I-94 via Half Day Road (Route 22) & Townline Road (Route 60)



Ideally located in southern Lake County with direct access to Milwaukee Ave. (Rt. 21) frontage



Surrounded by local amenities and situated within Vernon Hills' world-class Corporate Woods Business Park



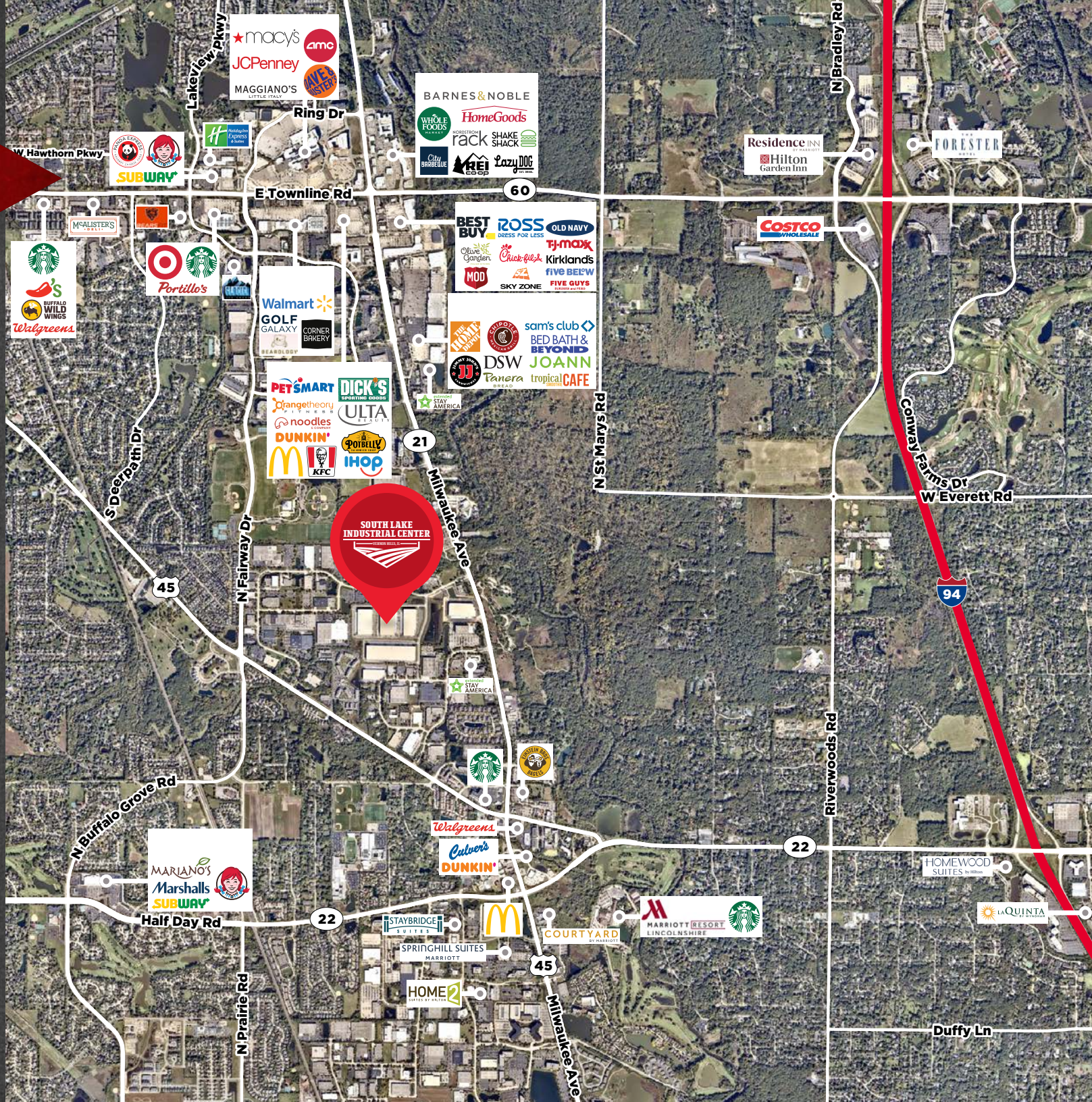
# AREA AMENITIES

## PARK AMENITIES

- EXPANSIVE FITNESS CENTER
- EXTENDED STAY HOTEL
- MARKET & DELI OUTLET STORE

## DRIVE-TIME STATS

- 8 MINUTES (3.5 MILES)  
I-94 4-WAY INTERCHANGE
- 16 MINUTES (9 MILES)  
IL-ROUTE 53
- 22 MINUTES (23 MILES)  
WISCONSIN STATE LINE
- 25 MINUTES (21 MILES)  
O'HARE INTERNATIONAL AIRPORT
- 50 MINUTES (35 MILES)  
DOWNTOWN CHICAGO





# EMBRACE THE POWER OF MODERN INDUSTRIAL

[SOUTHLAKEINDUSTRIAL.COM](https://southlakeindustrial.com)



## FOR MORE INFORMATION & LEASING:

### **BRETT KRONER**

*Vice Chair*

+1 847 720 1367  
[brett.kroner@cushwake.com](mailto:brett.kroner@cushwake.com)

### **KEITH PURITZ**

*Vice Chair*

+1 847 720 1366  
[keith.puritz@cushwake.com](mailto:keith.puritz@cushwake.com)

### **ERIC FISCHER**

*Executive Managing Director*

+1 847 720 1369  
[eric.fischer@cushwake.com](mailto:eric.fischer@cushwake.com)

### **MARC SAMUELS**

*Director*

+1 847 720 1368  
[marc.samuels@cushwake.com](mailto:marc.samuels@cushwake.com)



©2025 Cushman & Wakefield. All rights reserved. The information contained in this communication is strictly confidential. This information has been obtained from sources believed to be reliable but has not been verified. NO WARRANTY OR REPRESENTATION, EXPRESS OR IMPLIED, IS MADE AS TO THE CONDITION OF THE PROPERTY (OR PROPERTIES) REFERENCED HEREIN OR AS TO THE ACCURACY OR COMPLETENESS OF THE INFORMATION CONTAINED HEREIN, AND SAME IS SUBMITTED SUBJECT TO ERRORS, OMISSIONS, CHANGE OF PRICE, RENTAL OR OTHER CONDITIONS, WITHDRAWAL WITHOUT NOTICE, AND TO ANY SPECIAL LISTING CONDITIONS IMPOSED BY THE PROPERTY OWNER(S). ANY PROJECTIONS, OPINIONS OR ESTIMATES ARE SUBJECT TO UNCERTAINTY AND DO NOT SIGNIFY CURRENT OR FUTURE PROPERTY PERFORMANCE.

OWNED & MANAGED BY



PANATTONI