

799

BOYLSTON STREET

14,356 SF | FULL BUILDING OPPORTUNITY





THE AVAILABILITY

ADDRESS: 799 Boylston Street, Boston, MA

TIMING: Available Now

SIZE: 14,356 SF

Street Level: 4,938 SF

Second Level: 4,938 SF

Lower Level: 4,480 SF

THE DEMOGRAPHICS

TOTAL POPULATION



0.25
MILES

5,462

0.5
MILES

26,086

1
MILE

97,115

DAYTIME POPULATION



0.25
MILES

20,088

0.5
MILES

65,348

1
MILE

195,402

AVERAGE HH INCOME



0.25
MILES

\$213,534

0.5
MILES

\$172,685

1
MILE

\$158,005

THE DETAILS

- » Rare Boylston Street flagship retail opportunity at the corner of Boylston and Fairfield Streets in Boston's Back Bay neighborhood
- » Back Bay is Boston's most vibrant seven-day market, with more than 16 million square feet of office space, over 26,000 residents within a .5 mile radius, and 50 million visitors annually
- » Ideally positioned across from the front door of the Prudential Center, New England's highest sales PSF shopping mall (approx. \$1,200/SF)
- » Unique synergy of daily needs drivers and destination-driven retail on Boylston Street



799
BOYLSTON STREET

799
BOYLSTON STREET

THE NEIGHBORHOOD

As the premier urban retail destination in New England, the Back Bay provides employees, residents, and tourists alike with an unmatched roster of shopping, dining, cultural, and entertainment options. The neighborhood is home to approximately 450 retail stores and 200 restaurants that account for more than \$2.6 billion in annual retail sales, according to the Back Bay Association. This exceptional co-tenancy – and shopper affluence – secures the Back Bay's place at the top of many national, regional and local retailer's list of must-have store addresses.

Boylston Street is Back Bay's primary thoroughfare, with both strong vehicular and pedestrian traffic. It is home to some of Back Bay's most successful restaurants, flagship retailers, and historic Boston landmarks. It serves as the market's central corridor, bringing together the historic brownstone residential and retail density of Newbury Street with the density of the high rise office and large retail complexes of Prudential and Copley.

NEARBY RETAILERS

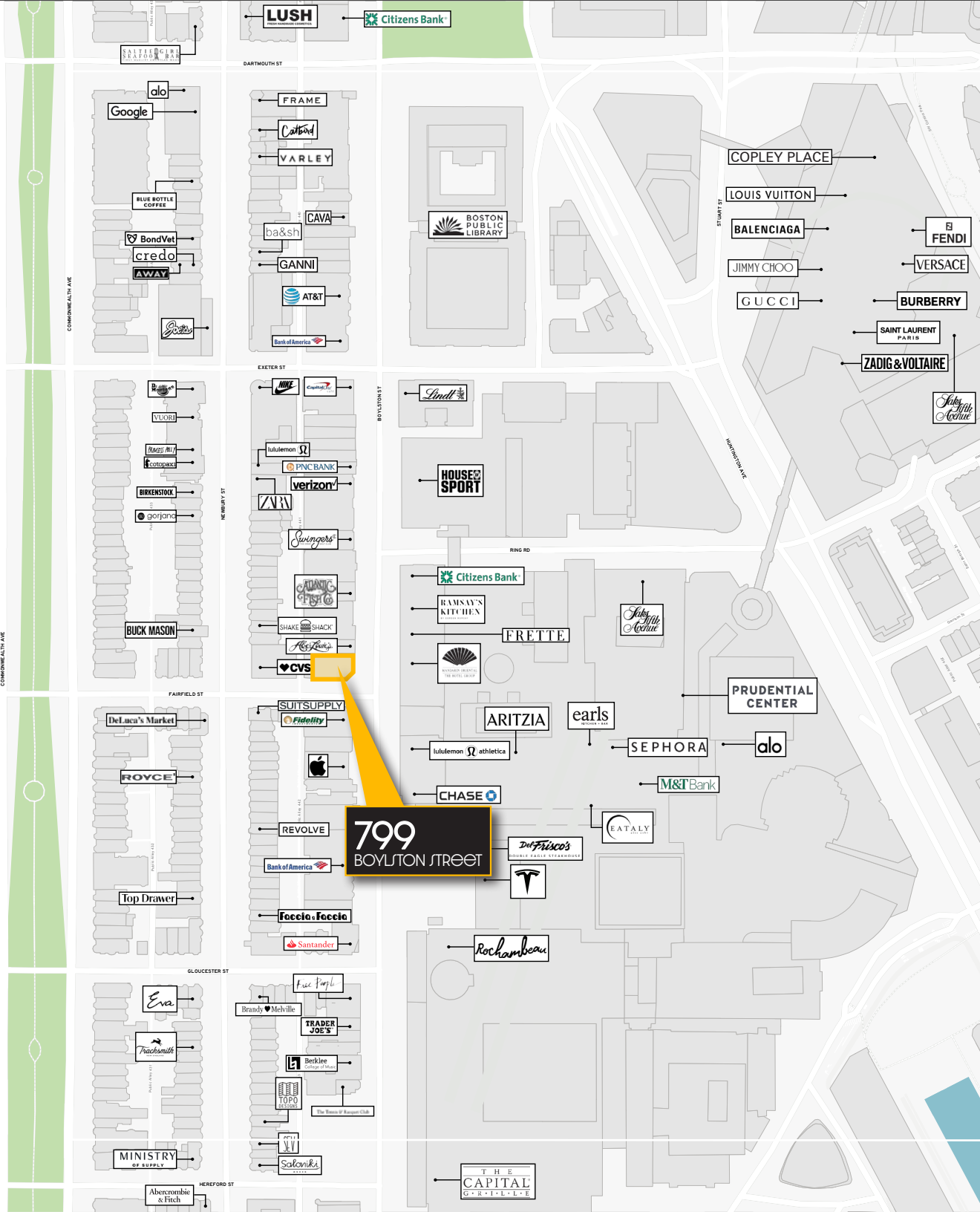


CONCEPTUAL RENDERING



799
BOYLSTON STREET





BACK BAY RETAIL & FINANCIAL INSTITUTIONS

OVER \$5B ANNUAL DEPOSITS IN BACK BAY



NEARBY RETAIL

Lyrik
AVRA
MADISON
estiatorio
ROSA Y MARIGOLD
RIVIAN
George Howell
COFFEE
CHICHA
San Chen
pink
VanLeeuwen

Abercrombie
& Fitch
MUJI
URBAN OUTFITTERS
UNIQLO

Tracksmith
MINISTRY
OF SUPPLY

799
BOYLSTON STREET

VUORI
cotopaxi

alo
Google

FAHERTY
rag & bone

RALPH LAUREN
jenni kayne

TIFFANY & Co.
VALENTINO

MASSACHUSETTS
HYNES
8,946 RIDERS/DAY

Saloniki
TOPO
DESIGNS

BoConcept
top Drawer

SUITSUPPLY
foccioc foccioc

verizon
PNC BANK

Capital One

Catbird
Levain

Bank of America

NEWBURY ST

TD Bank
Citizens Bank
Chick-fil-A

Anthropologie
rack
Webster Bank

HUBLOT
BREITLING

M&T Bank
Tatte

Bank of America
ARC'TERYX
patagonia
TJ-maxx

TRADER
JOE'S

HYNES
CONVENTION
CENTER

Apple
Fidelity

CHASE

NIKE
ZARA

DICK'S
HOUSE
SPORT

BOYLSTON ST

Glossier.
new balance

COPLEY SQUARE

STARBUCKS
TRADER
JOE'S
CACTUS CLUB CAFE
STK
Bank of America

ST JAMES AVE

PARK SQUARE
rocheboba
FIRE+ICE

Citizens Bank
PRUDENTIAL CENTER
SEPHORA
BLUE BOTTLE
COFFEE
alo
Saks Fifth
Avenue
EATALY
M&T Bank

shaw's

BOSTON
PUBLIC LIBRARY

flour
bakery + cafe
SHERATON

PRUDENTIAL
3,643 RIDERS/DAY

HUNTINGTON AVE

COPLEY PLACE
SAINT LAURENT
GOLDEN GOOSE
Yard House
Neiman Marcus

Eastern Bank

CVS
URBAN GRAPE

BACK BAY STATION
18,000 RIDERS/DAY (ORANGE LINE)

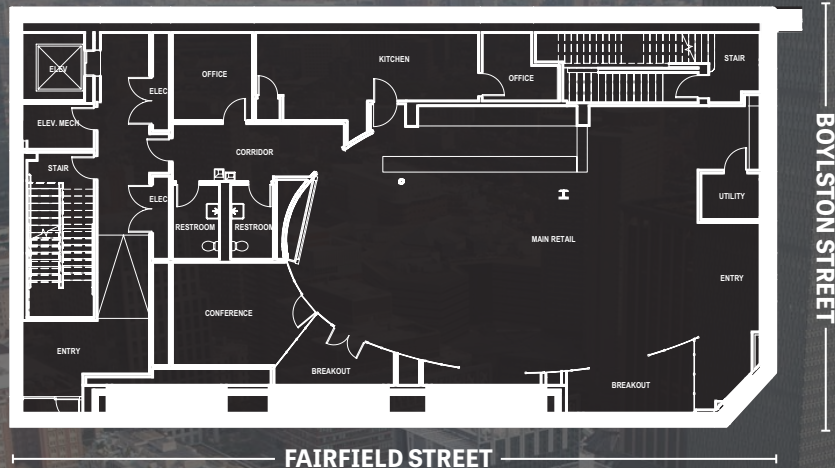
COLOMBUS AVE

799
BOYLSTON STREET

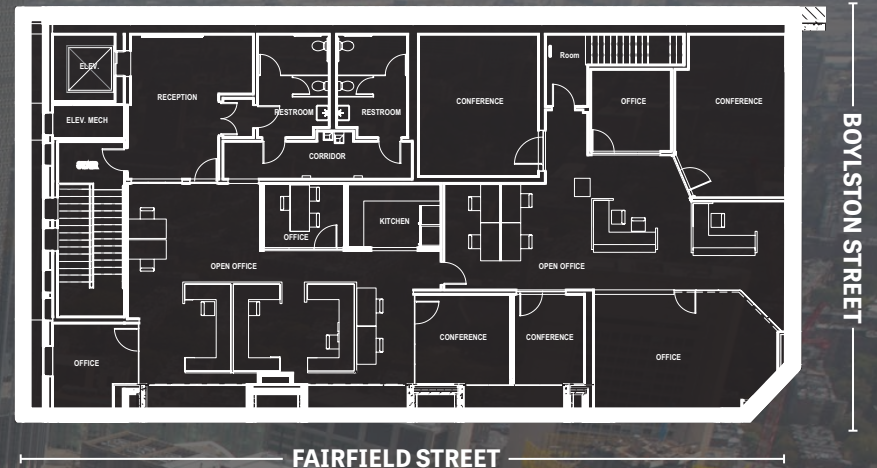


FLOOR PLANS

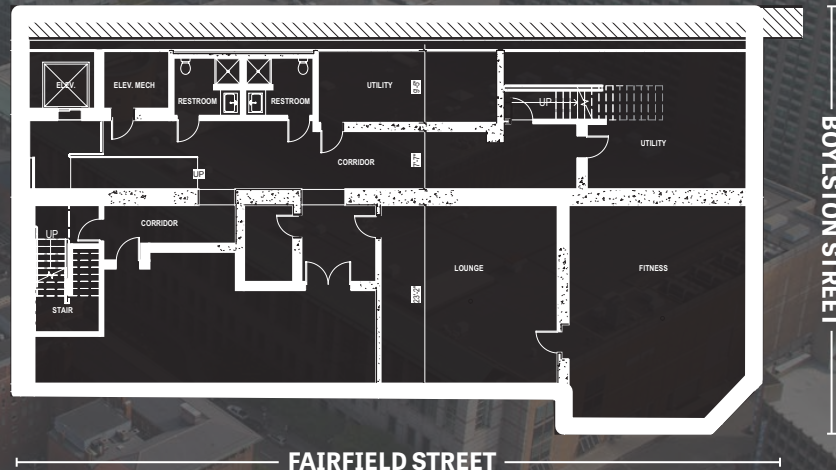
STREET LEVEL: 4,938 SF



SECOND LEVEL: 4,938 SF



LOWER LEVEL: 4,480 SF



799
BOYLSTON STREET



799 BOYLSTON STREET


SEAN GILDEA


617.262.6620 | SGILDEA@ATLANTICRETAIL.COM

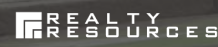
SOPHIE MORRILL

617.369.5926 | SMORRILL@ATLANTICRETAIL.COM

WWW.ATLANTICRETAIL.COM

 [LINKEDIN.COM/COMPANY/ATLANTIC-RETAIL-PROPERTIES](https://www.linkedin.com/company/atlantic-retail-properties)

 [INSTAGRAM.COM/ATLANTIC_RETAIL/](https://www.instagram.com/atlantic_retail/)

 **CHAIN.LINKS**
RETAIL ADVISORS

BOSTON
THE PRUDENTIAL CENTER
BOSTON, MA 02199
617.239.3600

ALBANY

ATLANTA

CHARLOTTE

LOS ANGELES

NEW YORK CITY

ORLANDO

PITTSBURGH

WEST PALM BEACH