An aerial photograph of a large industrial yard. The yard is paved and contains several rows of blue and white storage containers, some stacked. There are also several large white cylindrical tanks, some of which are mounted on trailers. A yellow forklift is visible in the center of the yard. In the background, there are large industrial buildings and more equipment. The text "4700 NEW WEST DRIVE" and "PASADENA, TX 77504" is overlaid on the image.

# 4700 NEW WEST DRIVE

PASADENA, TX 77504



PROPERTY OVERVIEW

PROPERTY HIGHLIGHTS



2.5971 ACRES  
113,130 SF  
Heavy  
Stabilized Yard



AVAILABILITY  
Within 30 days



CONSTRUCTION  
2021



ASKING RATE  
\$10,400.00/  
month NNN



SECURITY  
Gated entry  
with key pad



SITE  
Fenced  
property



YARD  
LIGHTS  
500W LED



YARD SPECS  
Cement stabilized  
crushed concrete  
9" thick



DRAINAGE  
On site storm  
drainage inlets





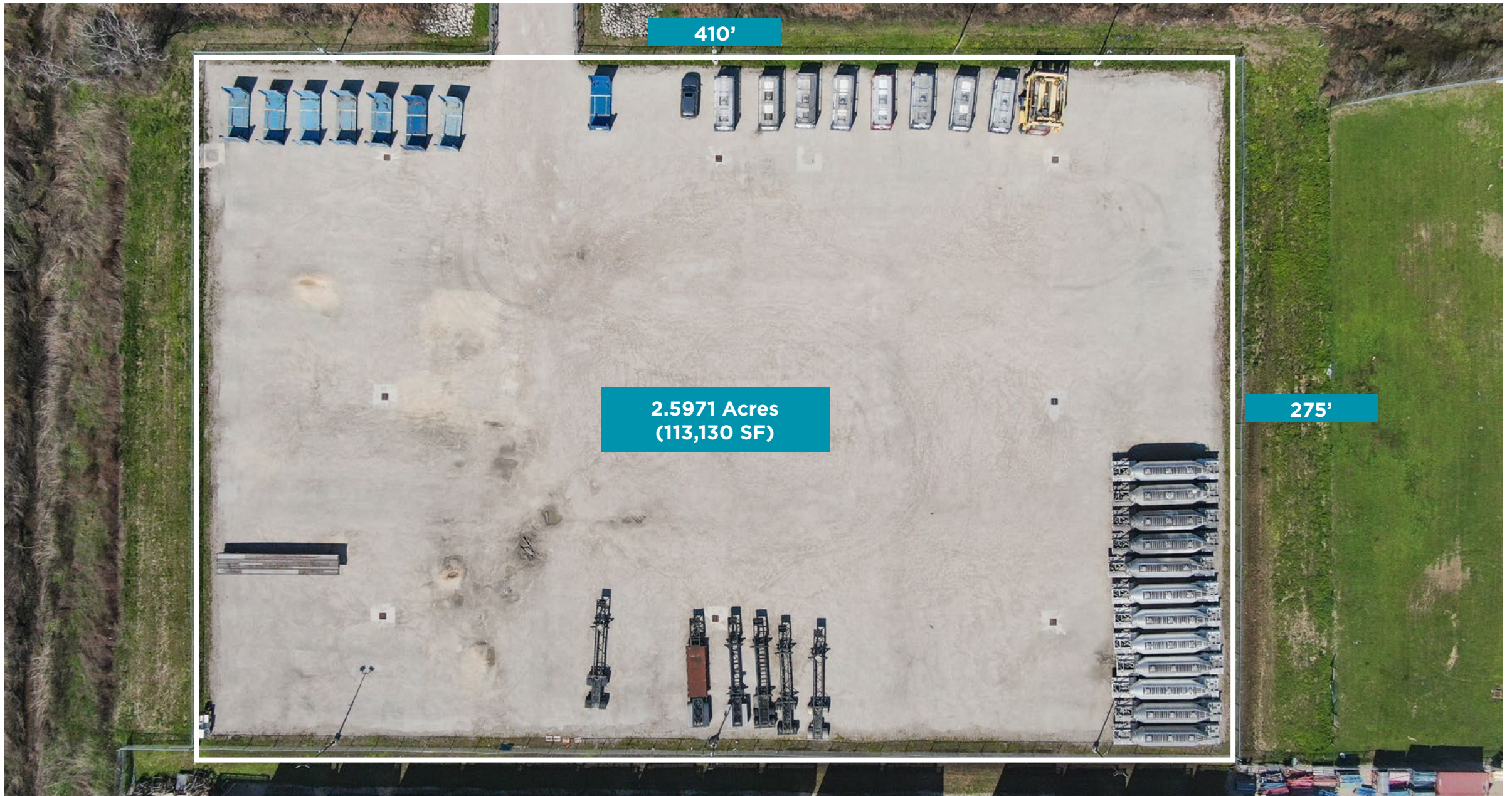
PROPERTY OVERVIEW

## TRUCK ACCESS ROUTE





## SITE PLAN





Cypress

PROPERTY OVERVIEW

## LOCATION MAP

Bridgeland

Grand Pkwy.

Copperfield

Jersey Village

Hardy Toll Rd.

Atascocita

Lake Houston

Crosby

Houston

Galena Park

Jacintoport

Baytown

Westpark Toll Rd.

Pasadena

Deer Park

La Porte

Sugar Land

Richmond

Missouri City

Pearland

Webster

Galveston Bay

4700 NEW WEST DRIVE





**COE PARKER, SIOR**  
SENIOR DIRECTOR  
+1 713 963 2825  
[coe.parker@cushwake.com](mailto:coe.parker@cushwake.com)

**KELLEY PARKER, SIOR**  
VICE CHAIRMAN  
+1 713 963 2825  
[kelley.parker@cushwake.com](mailto:kelly.parker@cushwake.com)

**JOHN LITTMAN, SIOR**  
EXECUTIVE MANAGING DIRECTOR  
+1 713 963 2862  
[john.littman@cushwake.com](mailto:john.littman@cushwake.com)



**CUSHMAN &  
WAKEFIELD**

©2025 Cushman & Wakefield. All rights reserved. The information contained in this communication is strictly confidential. This information has been obtained from sources believed to be reliable but has not been verified. NO WARRANTY OR REPRESENTATION, EXPRESS OR IMPLIED, IS MADE AS TO THE CONDITION OF THE PROPERTY (OR PROPERTIES) REFERENCED HEREIN OR AS TO THE ACCURACY OR COMPLETENESS OF THE INFORMATION CONTAINED HEREIN, AND SAME IS SUBMITTED SUBJECT TO ERRORS, OMISSIONS, CHANGE OF PRICE, RENTAL OR OTHER CONDITIONS, WITHDRAWAL WITHOUT NOTICE, AND TO ANY SPECIAL LISTING CONDITIONS IMPOSED BY THE PROPERTY OWNER(S). ANY PROJECTIONS, OPINIONS OR ESTIMATES ARE SUBJECT TO UNCERTAINTY AND DO NOT SIGNIFY CURRENT OR FUTURE PROPERTY PERFORMANCE.