

FOR LEASE

3,026± Sq. Ft. Industrial Condominium



20 N. East Street, Suite 104, Woodland, CA

Large open floor plan with high ceilings
One private office, break room and restroom
Rollup door with plenty of storage space
Great natural light
Adequate parking
Water/Sewer and garbage included in rent
Monument Signage

Lease Rate: \$4,690.00/Month

SALLING PROPERTIES INC.

DRE No. 02201437

REAL ESTATE SALES, LEASING & PROPERTY MANAGEMENT

20 N. East Street, Suite 101, Woodland, CA 95776

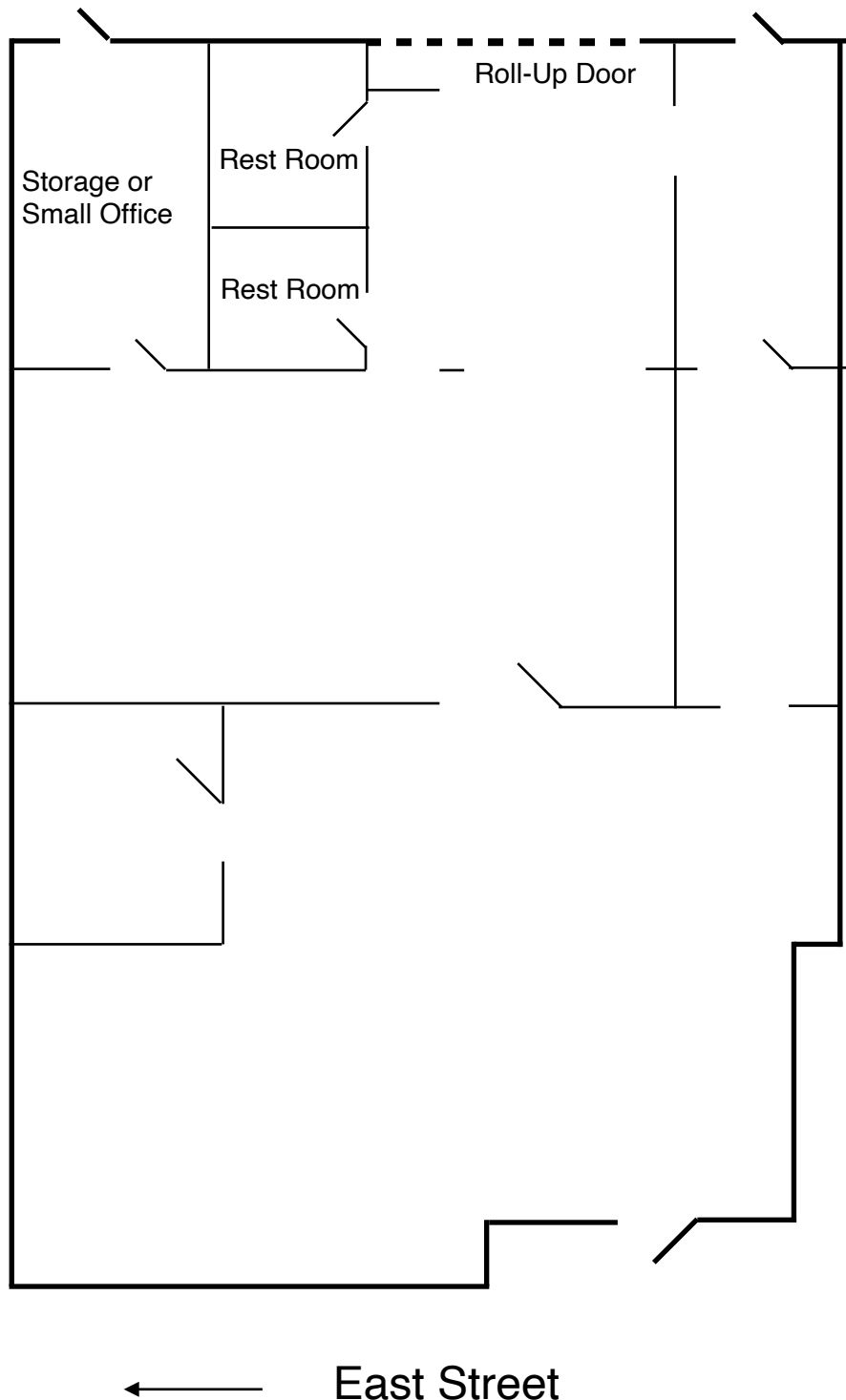
Phone: (530) 666-5485 Website: www.Sheffield-RealEstate.com

E-Mail: sallingproperties@kathysallingrealtor.com

Listing Agent: **Bryan Sheffield, Agent**
CalBRE: **02065645**
Phone: **(530) 219-0281**
E-Mail: **bsheffield100@gmail.com**

The information contained herein has been obtained from sources we deem reliable. We cannot, however, assume responsibility for its accuracy.

3,026± Sq. Ft. Industrial Condominium
20 N. East Street, Suite 104 • Woodland, CA



SALLING PROPERTIES INC.

DRE No. 02201437

REAL ESTATE SALES, LEASING & PROPERTY MANAGEMENT

20 N. East Street, Suite 101, Woodland, CA 95776

Phone: (530) 666-5485 Website: www.Sheffield-RealEstate.com

E-Mail: sallingproperties@kathysallingrealtor.com

Listing Agent: **Bryan Sheffield, Agent**
CalBRE: **02065645**
Phone: **(530) 219-0281**
E-Mail: **bsheffield100@gmail.com**

The information contained herein has been obtained from sources we deem reliable. We cannot, however, assume responsibility for its accuracy.

3,026± Sq. Ft. Industrial Condominium

20 N. East Street, Suite 104 • Woodland, CA



SALLING PROPERTIES INC.

DRE No. 02201437

REAL ESTATE SALES, LEASING & PROPERTY MANAGEMENT

20 N. East Street, Suite 101, Woodland, CA 95776

Phone: (530) 666-5485 Website: www.Sheffield-RealEstate.com

E-Mail: sallingproperties@kathysallingrealtor.com

The information contained herein has been obtained from sources we deem reliable. We cannot, however, assume responsibility for its accuracy.

Listing Agent: **Bryan Sheffield, Agent**
CalBRE: **02065645**
Phone: **(530) 219-0281**
E-Mail: **bsheffield100@gmail.com**