



## **Property Information**

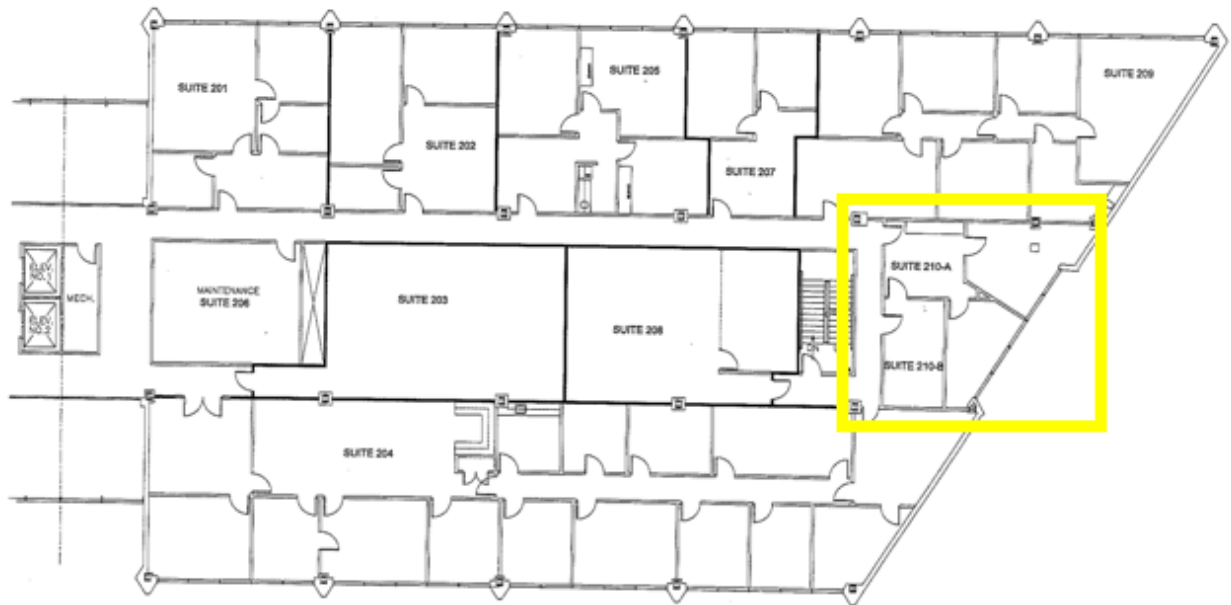
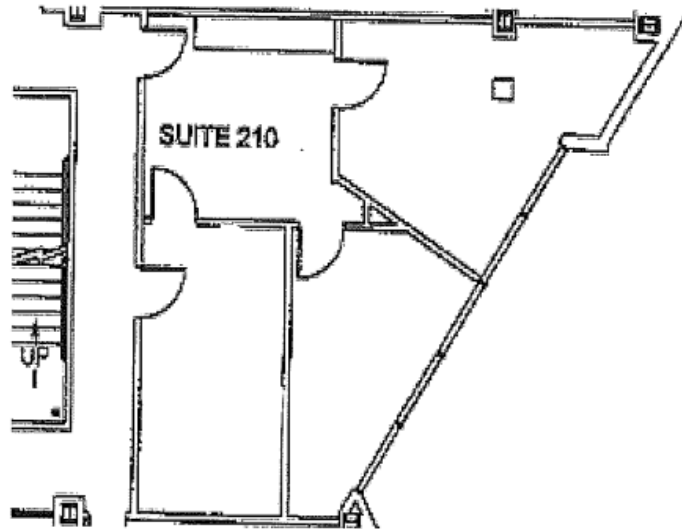
**Location:** 911 West Loop 281  
Longview, Texas  
Located on Loop 281, east of Bill Owens  
Parkway and west of McCann

**Available Space:** Suite 210 - Approximately 1,395 SF

*For more information:*

**Walter R. Northcutt**  
**(903) 753-2191**  
[wnorthcutt@beerwellseasttexas.com](mailto:wnorthcutt@beerwellseasttexas.com)

### SITE PLAN – 210 EAST WING (Actual Layout May Vary)

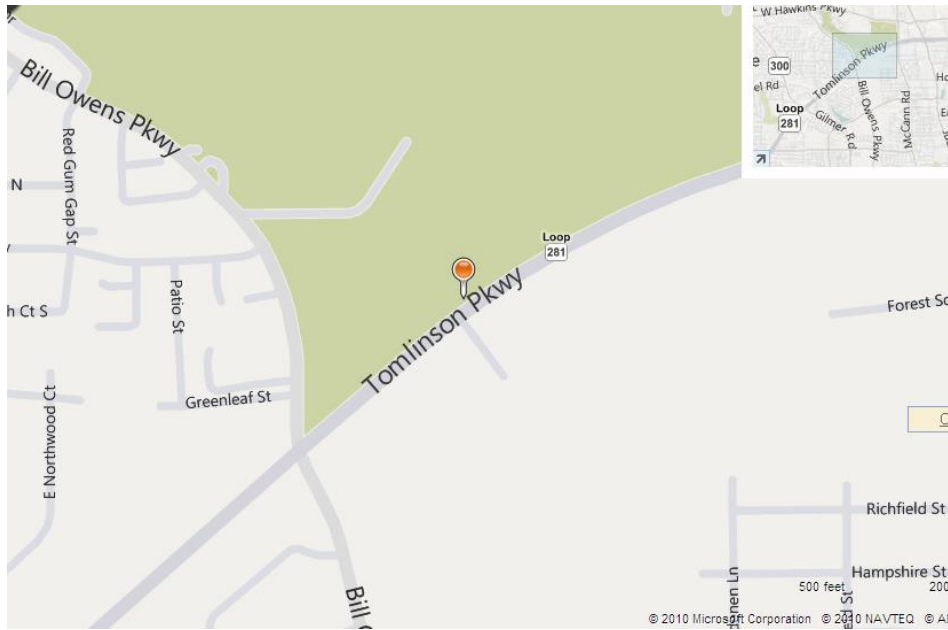


1 2ND FLOOR PLAN - EAST  
1/8" = 1'-0"

*(Parking Lot Side)*

This information has been secured from sources we believe to be reliable, but we make no representations or warranties, expressed or implied, as to the accuracy of the information. References to square footage or age are approximate. Buyer must verify the information and bears all risk for any inaccuracies.

### MAP



### TRAFFIC COUNTS



This information has been secured from sources we believe to be reliable, but we make no representations or warranties, expressed or implied, as to the accuracy of the information. References to square footage or age are approximate. Buyer must verify the information and bears all risk for any inaccuracies.