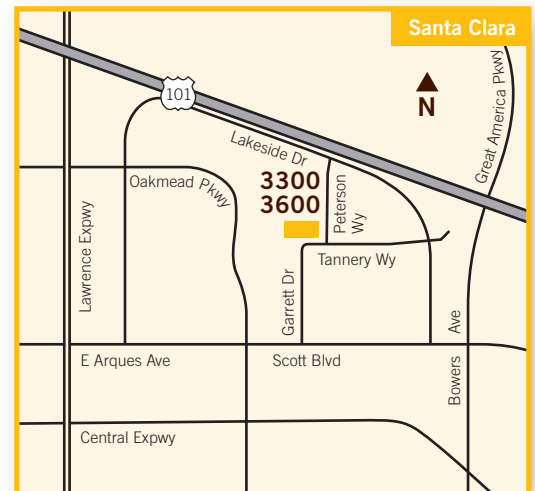




# ±75,841 sf R&D/flex building

## 3300 Tannery Way/3600 Peterson Way, Santa Clara

- Divisible to 34,421 sf and 41,420 sf
- Building and interiors recently renovated
- Mix of drop and open ceiling with Title 24 upgrades
- Large kitchen and break area, with adjacent outdoor patio
- 3,200 amps @277/480V
- Large IDF room with separate A/C
- Over 4/1,000 parking
- Available immediately

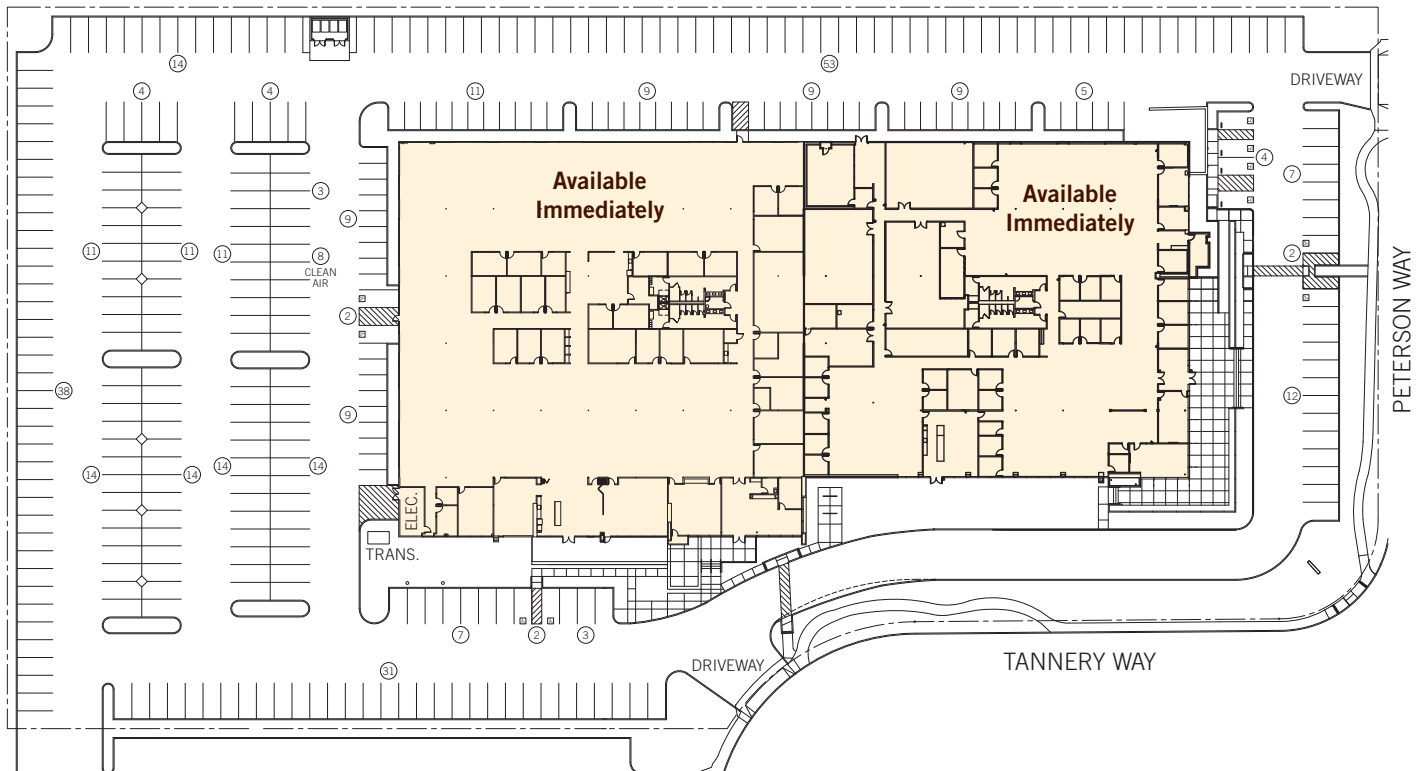


**Geordie McKee · Dave Conklin** 650.321.3040  
Lic. 01257296 Lic. 01036562

# ±75,841 sf R&D/flex building

## 3300 Tannery Way/3600 Peterson Way, Santa Clara

### Site Plan



Floor plans may not be to scale. The information contained herein has been obtained from sources we deem reliable. We have no reason to doubt its accuracy, but we do not guarantee it. All information should be verified prior to lease.

**Geordie McKee · Dave Conklin** 650.321.3040  
Lic. 01257296 Lic. 01036562

# ±75,841 sf R&D/flex building

## 3300 Tannery Way/3600 Peterson Way, Santa Clara

**3300 Tannery Way: 41,420 sf**



Floor plans may not be to scale. The information contained herein has been obtained from sources we deem reliable. We have no reason to doubt its accuracy, but we do not guarantee it. All information should be verified prior to lease.

**Geordie McKee · Dave Conklin** 650.321.3040  
Lic. 01257296 Lic. 01036562

# ±75,841 sf R&D/flex building

## 3300 Tannery Way/3600 Peterson Way, Santa Clara

### 3300 Tannery Way



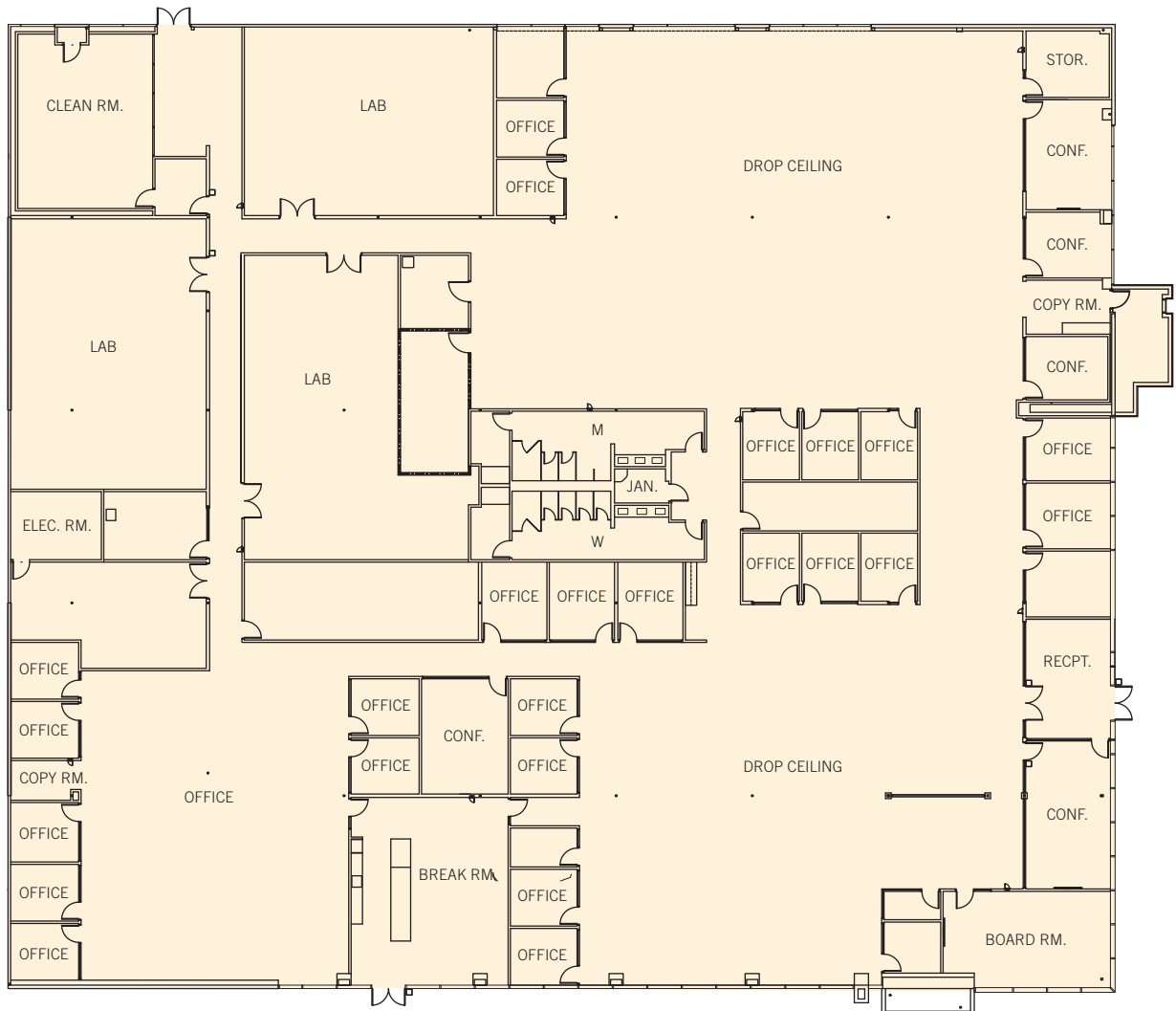
Floor plans may not be to scale.  
The information contained herein has been obtained from sources we deem reliable. We have no reason to doubt its accuracy, but we do not guarantee it. All information should be verified prior to lease.

**Geordie McKee · Dave Conklin** 650.321.3040  
Lic. 01257296 Lic. 01036562

# ±75,841 sf R&D/flex building

## 3300 Tannery Way/3600 Peterson Way, Santa Clara

### 3600 Peterson Way: 34,421 sf



Floor plans may not be to scale. The information contained herein has been obtained from sources we deem reliable. We have no reason to doubt its accuracy, but we do not guarantee it. All information should be verified prior to lease.

**Geordie McKee · Dave Conklin** 650.321.3040

Lic. 01257296

Lic. 01036562