



# HISTORIC DILL BUILDING

2020-A E. FRANKLIN STREET  
RICHMOND, VA 23223

## NOW LEASING!



CREATIVE OFFICE SPACE IN BOOMING SHOCKOE BOTTOM / CHURCH HILL AREA

### PROPERTY FEATURES

- ▶ Four private offices, conference room, reception area, work room, dual restrooms, storage
- ▶ Abundant natural light, tall windows in every office, reception and conference room
- ▶ Access to property amenities, rooftop pool, lounge and 24-hour fitness center
- ▶ Architectural details, exposed brick and wood beams
- ▶ Professionally-managed by local, on-site property management firm
- ▶ Off-street parking available, garage and surface lot
- ▶ Central location with excellent access to main interstates I-95, I-64 and I-195

### PROPERTY SUMMARY

Available Space      Office / Medical      2,108 sq. ft.

#### *In the heart of Richmond's Shockoe Bottom...*

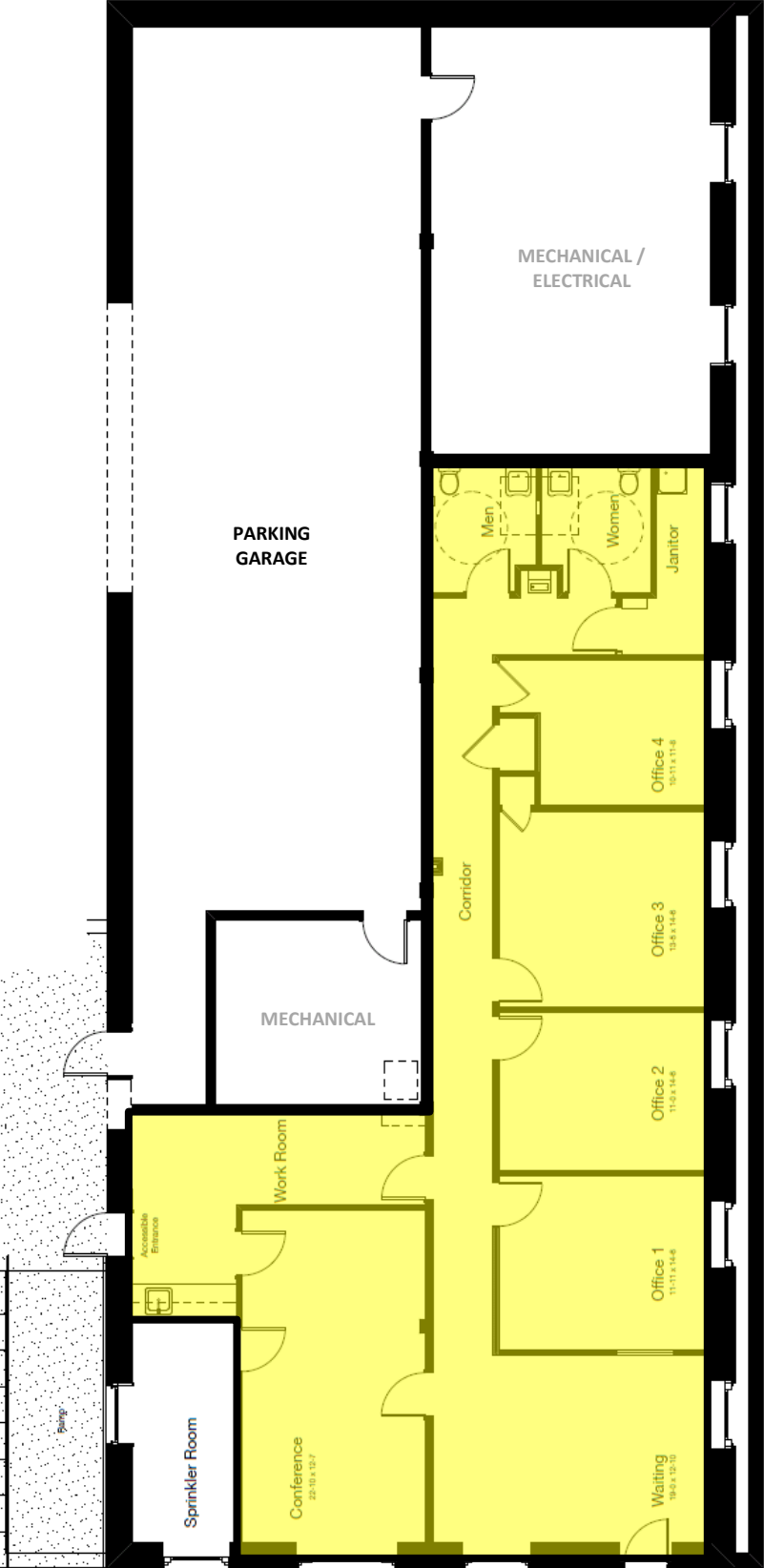
The Dill Building is a historic warehouse transformed into a beautiful mixed-use community of 53 luxury apartments and one street level office suite with dedicated, off-street parking. Once the tobacco headquarters of the South, Shockoe Bottom is now home to urban, loft-style apartment homes, trendy shops and is just steps away from the riverfront and Canal Walk.

### PROPERTY CONTACT

Sean Eichert, (804) 419-2295  
seichert@plusmgt.com, www.plusmgt.com

Plus Management, LLC  
13281 River's Bend Blvd, Suite 201, Chester, VA 23836

# Floor plan



# Aerial Map

2020 E. Franklin Street, Richmond, VA 23223

