

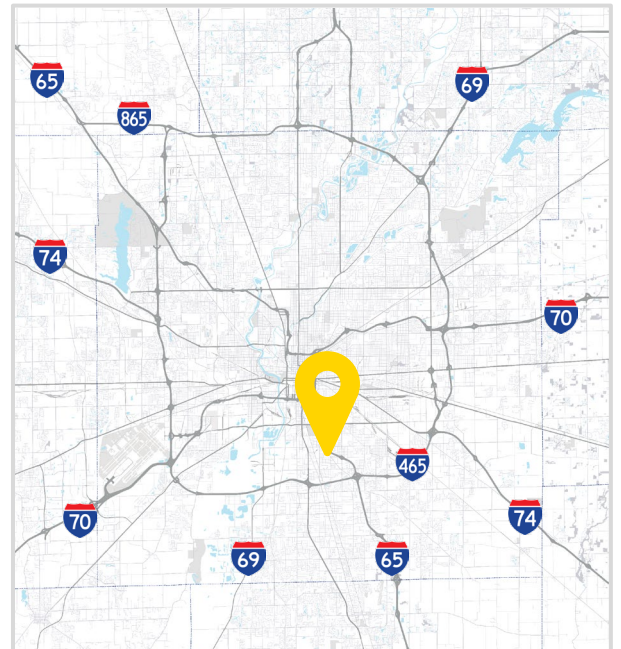


FOR LEASE

3000 Shelby St  
Indianapolis, IN

### Property Highlights

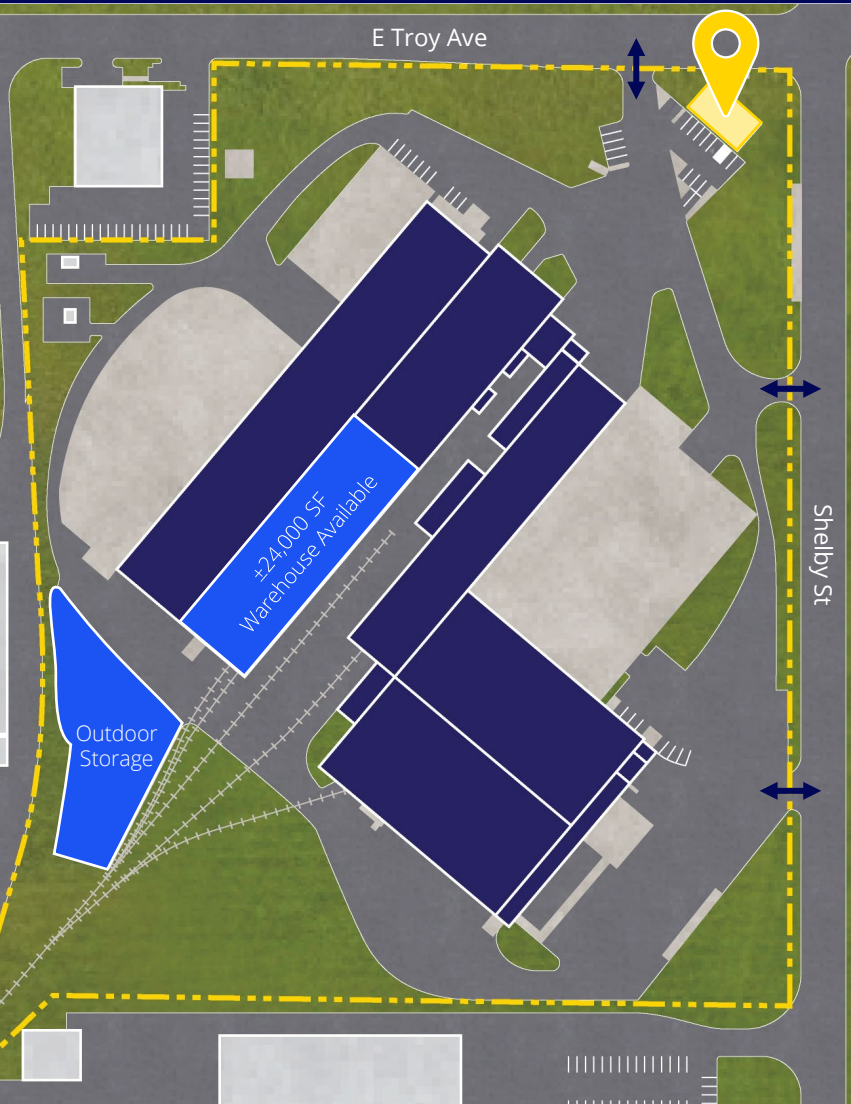
- Building 7: ±4,000 SF of 2-story office
- Quick access to I-65 via Raymond St. exit
- Steps from IndyGo's Troy Ave Red Line and Route 16 buslines stop
- Large offices and conference rooms on both floors
- 20 off-street Auto Parking Spots
- Zoned CS for office use; possible use in conjunction with available warehouse and outdoor storage spaces.
- On-site, full-time facility management
- High traffic area with great visibility
- Signage options available
- Available for occupancy March 1, 2026



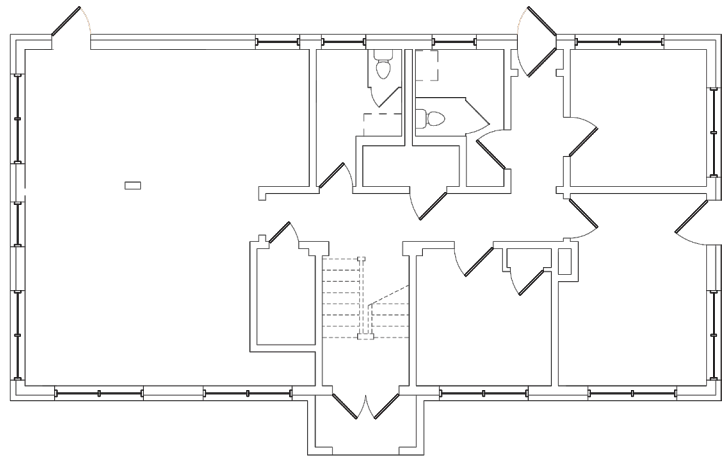
George Manley, SIOR  
+1 317 397 2551  
george.manley@colliers.com

Korey Ryan, SIOR  
+1 765 520 6662  
korey.ryan@colliers.com

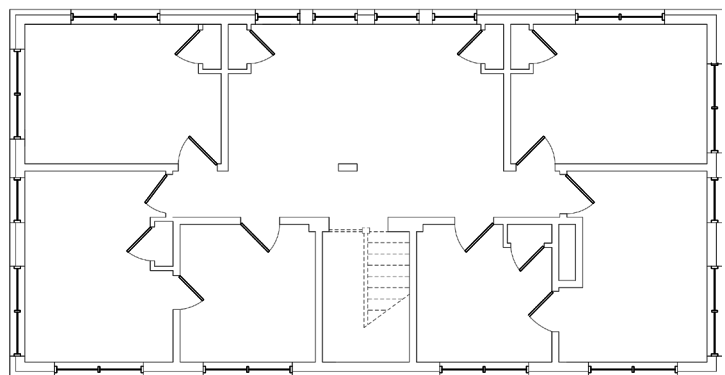
# Building 7



First Floor (±2,000 SF)



Second Floor (±2,000 SF)



# Location and Connectivity

## Key Distances

I-65 1.1 mi

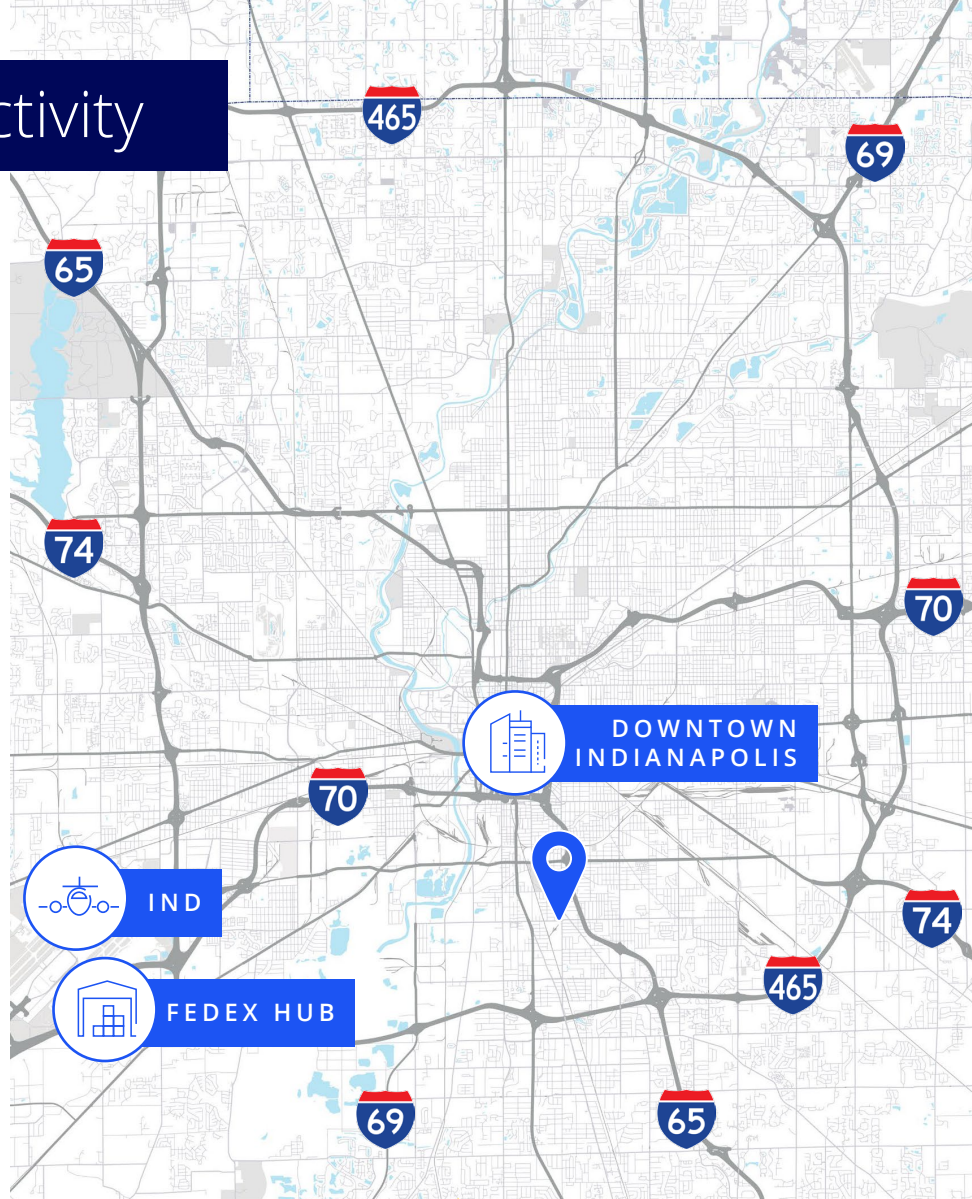
I-465 1.9 mi

I-70 2.7 mi

Downtown Indianapolis 4.9 mi

FedEx Hub 10 mi

Indianapolis Int'l Airport 13 mi



# Why Indy



## INDIANAPOLIS INT'L AIRPORT

- 2<sup>nd</sup> largest FedEx air hub worldwide
- Serves as FedEx's national aircraft maintenance operations
- 8<sup>th</sup> largest cargo airport in U.S
- 11<sup>th</sup> year named "Best Airport in North America"



## INDIANA AIRPORTS — LOGISTICS NETWORK

- Commercial/Freight users have 5 airports to access
- GCIA – a key economic driver in NW Indiana, awarded \$6M federal grant to expand/upgrade its air cargo infrastructure



- IND** Indianapolis Int'l Airport
- EW** Evansville Regional Airport
- FWA** Fort Wayne Int'l Airport
- GCIA** Gary/Chicago Int'l Airport
- SBN** South Bend Int'l Airport



## INDIANA ROADS — UNRIVALED CONNECTIVITY

- 8 interstates intersect the state making Indiana #1 in U.S. in pass-thru highways
- I-65 and I-70, both considered major NAFTA logistic corridors & part of the IFDC network (*Inland Freight Distribution Cluster*)
- 40+ major cities & 75% of U.S. population within 1-day drive
- 5<sup>th</sup> busiest state for commercial freight traffic



## INDIANA RAIL — A STRONG TRACK RECORD

- 3 Class 1 systems pass thru — CSXT, Canadian National, Norfolk Southern, plus 39 Class II & Class III railroads
- 4<sup>th</sup> in U.S. in number of railroads operating — 7<sup>th</sup> in carloads handled — 10<sup>th</sup> in millions of tons handled
- Indiana's freight traffic flow forecast to increase 60% by 2040
- Extensive transloading capabilities via privately-owned Indiana Rail Road Co., a 500-mile railroad logistics provider with national rail network access via Chicago/Indy gateways

“Over the last decade, Indiana has ranked as a Top-10 performer in landing corporate facility investment projects in the nation.”

2022 – *Site Selection Magazine*



## INDIANA PORTS — UNMATCHED ACCESS TO BIG INDUSTRY

- 3 international maritime ports provide global access to the world's most productive industrial & agricultural regions
- Bringing \$7.8B per year to Indiana's economy, handling over 25M tons of cargo yearly

- NW** Burns Harbor
- SE** Jeffersonville
- SW** Mt Vernon

\*sources: Forbes Magazine, Site Selection Magazine, Business Facilities

George Manley, SIOR  
+1 317 397 2551  
george.manley@colliers.com

Korey Ryan, SIOR  
+1 765 520 6662  
korey.ryan@colliers.com

**1<sup>st</sup>**  
in U.S. for manufacturing output

**1<sup>st</sup>**  
best state to start a business

**2<sup>nd</sup>**  
# Manufacturing Jobs (% of workforce)

**3<sup>rd</sup>**  
leading state in biotechnology exports