

For Lease

IOS Yard - Multiple Uses Allowed

18.26 Acres | Contact Broker for Pricing



2363 US Highway 441/27

Fruitland Park, Florida 34731

Property Highlights

- 0.5± to 14.5± acres of industrial outside storage available
- IND zoning allows a wide range of IOS uses
- Ideal for fleet and trailer parking, contractor yards, materials storage and equipment sales or laydown
- Direct frontage and access on US Hwy 441-27 (30,000 AADT)
- Central location with efficient access to Ocala, Orlando and Tampa markets
- Immediate availability
- Call for pricing - rates vary based on yard size and configuration



For more information

Zach Cichocki

O: 407 949 0752
zcichocki@realvest.com

Kevin O'Connor

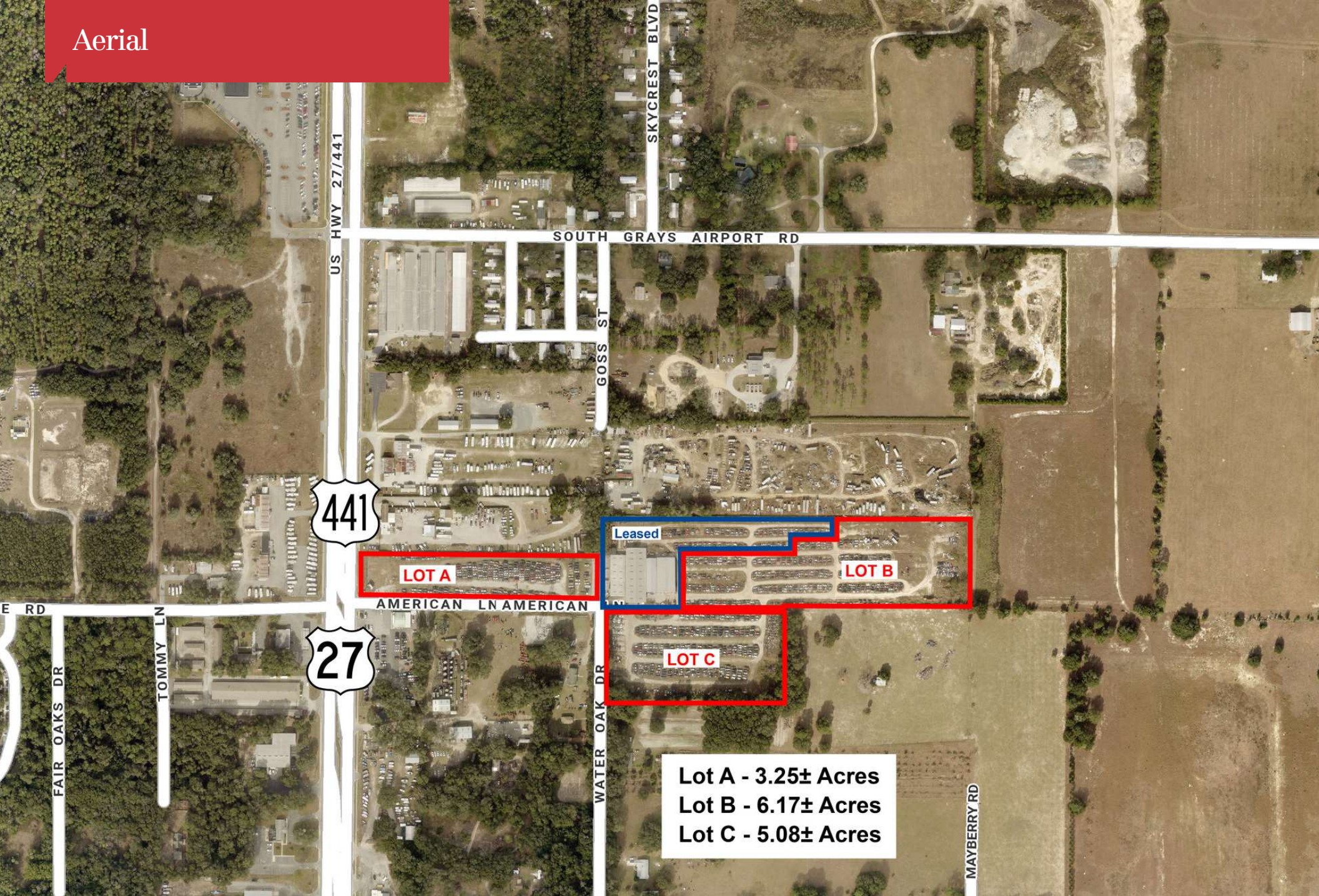
O: 407 949 0736
koconnor@realvest.com

Matthew Cichocki

O: 407 949 0738
mcichocki@realvest.com

Contact Broker for Pricing

Aerial



Lot A - 3.25± Acres
Lot B - 6.17± Acres
Lot C - 5.08± Acres

Property Photos



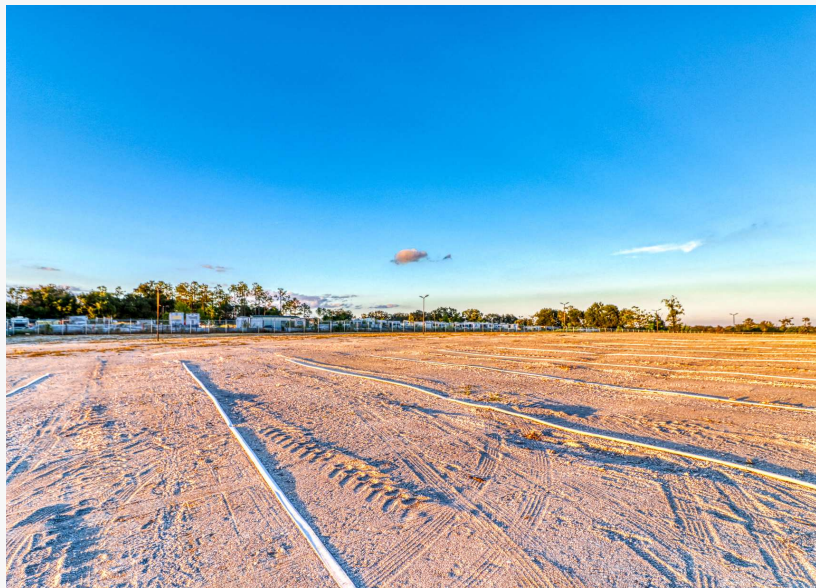
Lot A



Lot A



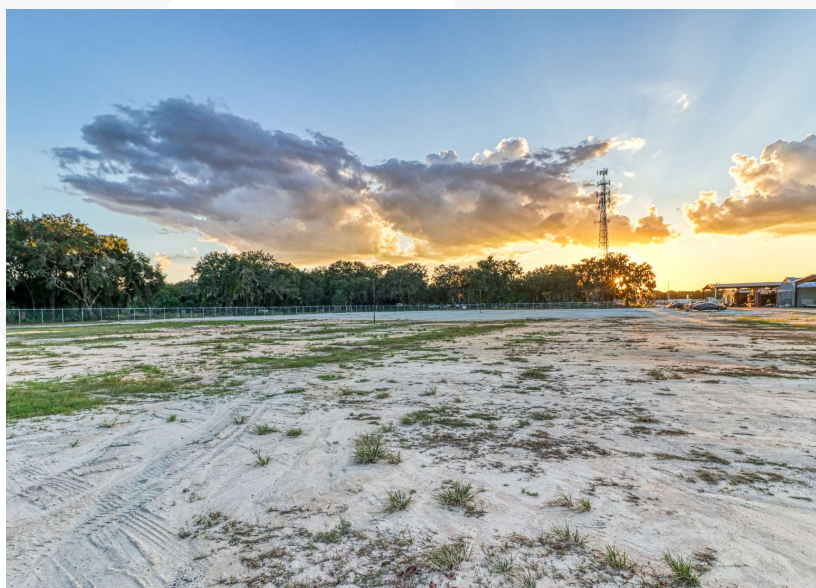
Lot B



Lot B

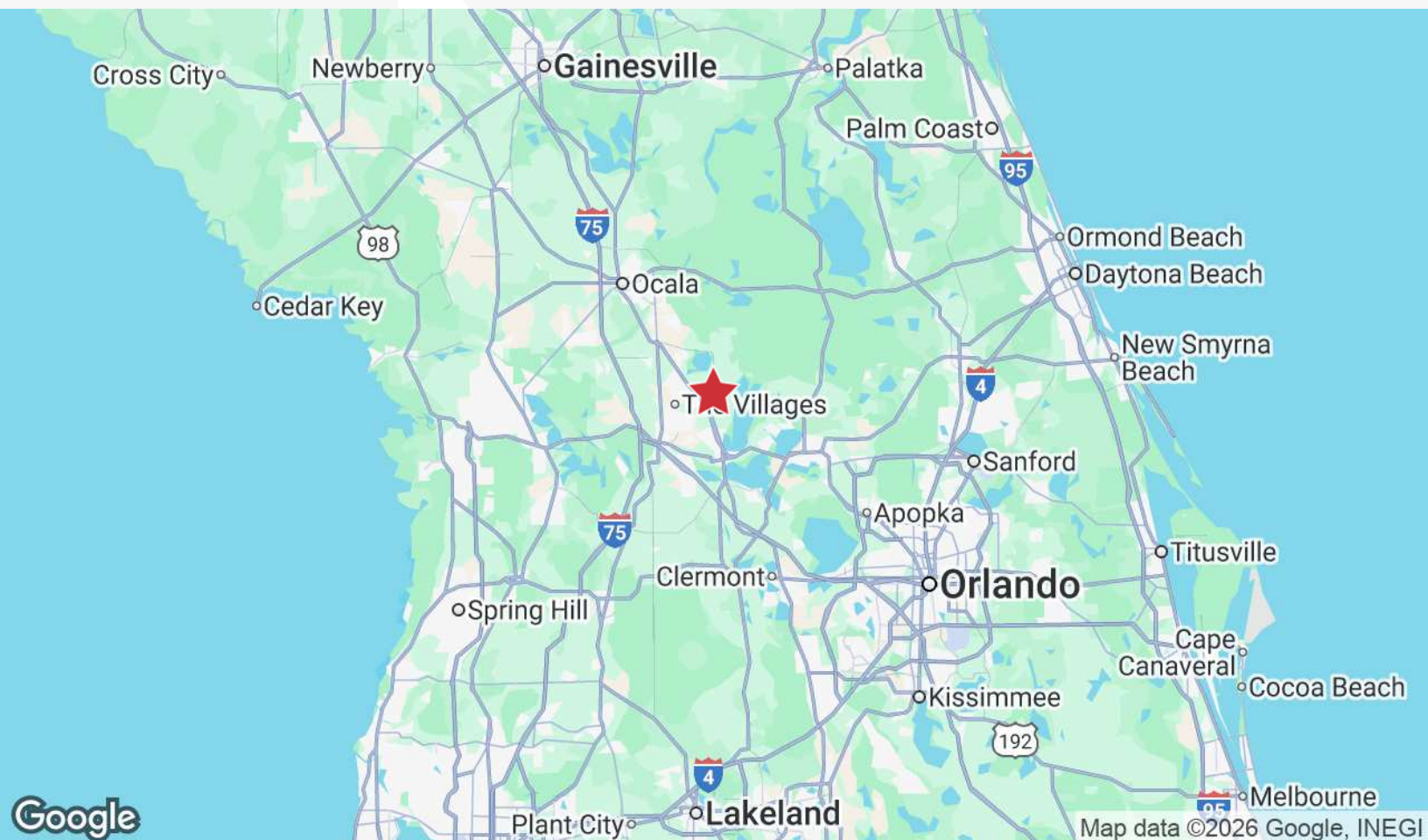
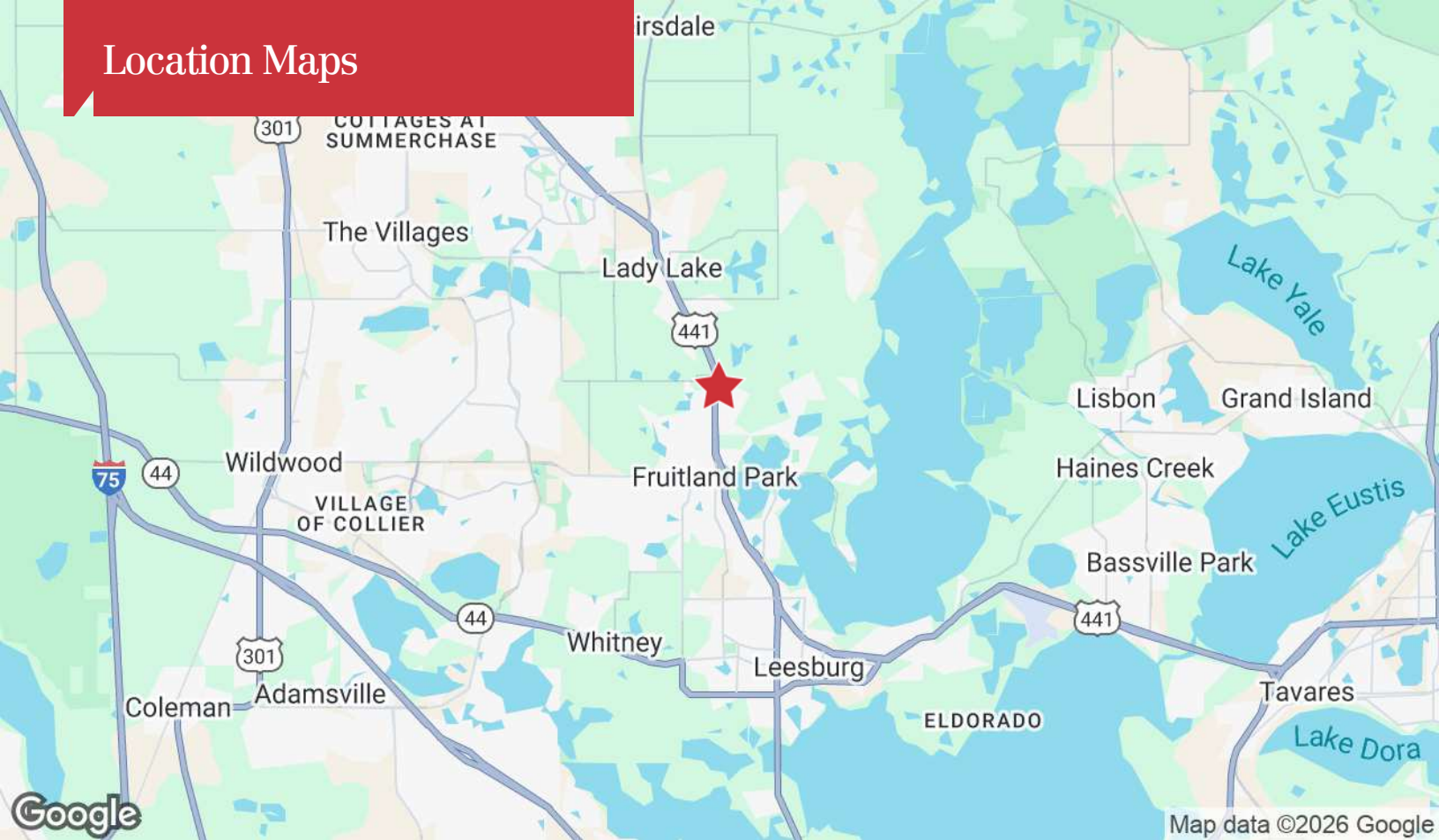


Lot C



Lot C

Location Maps



Regional Map

