

# FOR LEASE - Retail and Office Space - 151 E. Wilson | Madison, Wisconsin 53703

## Property Snapshot

1,300—1,700 SF OF RETAIL SPACE

2,500—6,500 SF OF OFFICE SPACE

- Fantastic downtown location two blocks from the Capitol Square. **Brand new** 14 story multi-tenant luxury high-rise apartment building with a large outdoor patio area with lake views connected to the office space.
- New pedestrian walking and bike path which connects with Monona Terrace will be right next to this building
- On-site garage parking available
- Tenant build-outs begin spring of 2018 with available occupancy in July 2018
- Great retail space, perfect for a coffee shop, café or bar

## PLEASE CONTACT

### Katie West

Commercial Real Estate Broker

608.443.1023 Direct

kwest@oakbrookcorp.com

### Chris Caulum, SIOR, CCIM

Vice President

608.443.10240 Direct

ccaalum@oakbrookcorp.com



## Property Profile

1st Floor Space: 1,300—6,500 SF

Lease Term: Negotiable

Lease Rate: \$24.00 —\$30.00 PSF Modified Gross

Available: Summer of 2018

TI allowance: \$25/SF



AMAZING VIEWS OF BEAUTIFUL LAKE MONONA

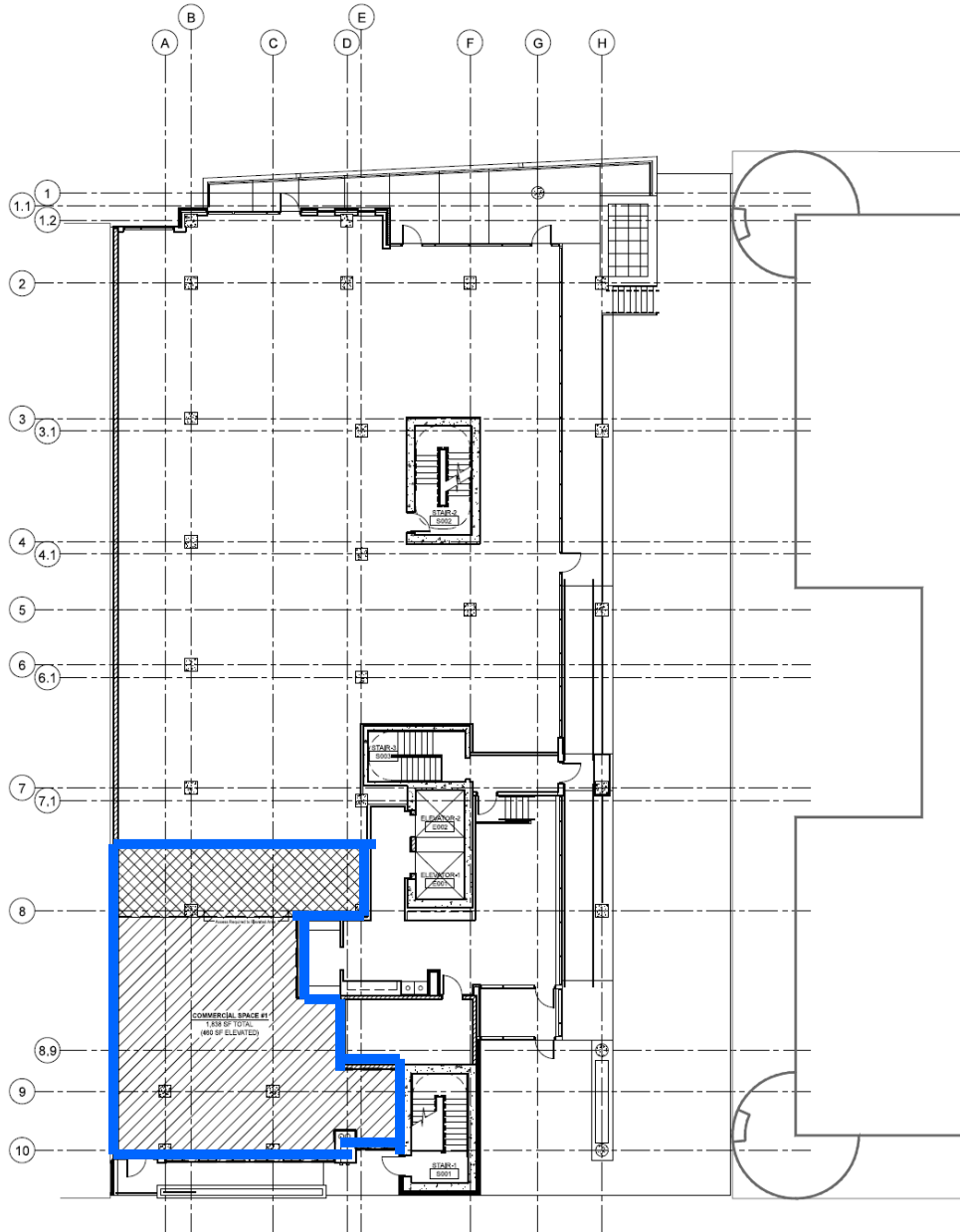
# ARTIST RENDERINGS



# CONSTRUCTION SITE PHOTOS

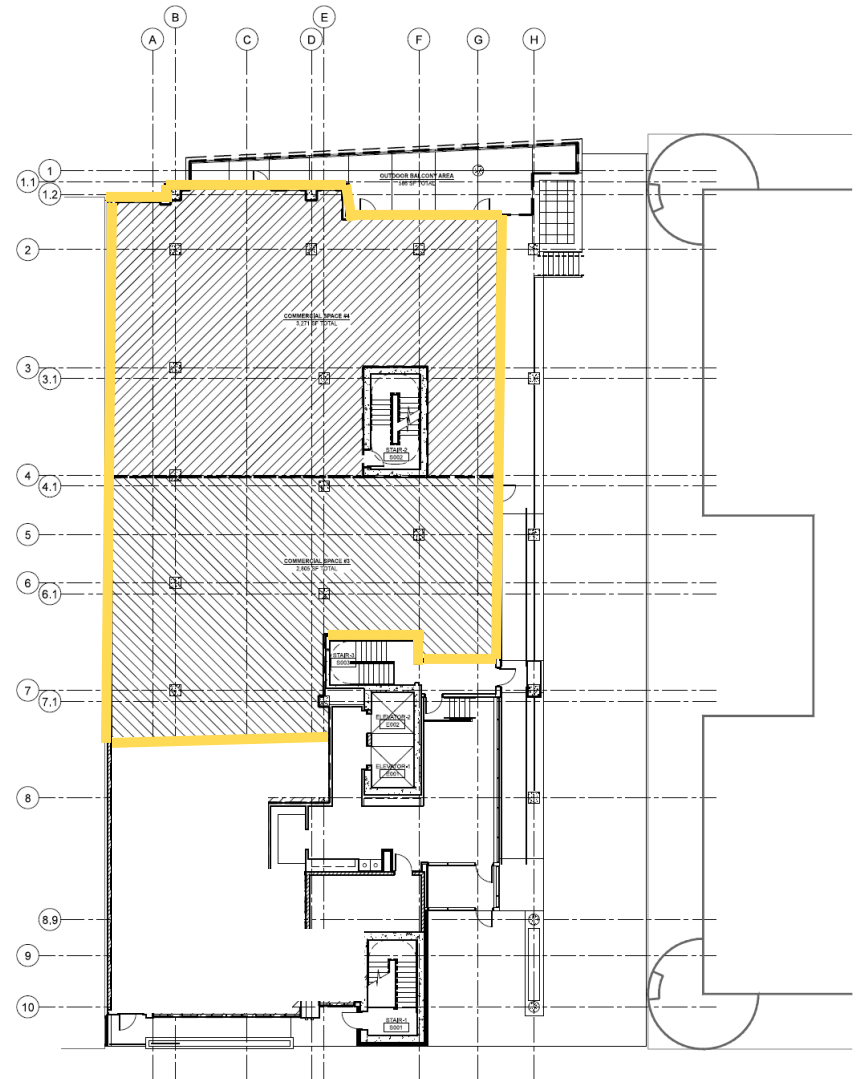


# FLOOR PLAN -1ST FLOOR



Retail Space -  
1,300 - 1,700 SF

## Office Space - 2,500 - 6,500 SF



# AERIAL MAP



Build Site

Lake Monona

**DISCLOSURE TO NON-RESIDENTIAL CUSTOMERS**

1 Prior to negotiating on your behalf the brokerage firm, or an agent associated with the firm, must provide you the  
2 following disclosure statement:

3 **DISCLOSURE TO CUSTOMERS**

4 You are a customer of the brokerage firm (hereinafter Firm). The Firm is either an agent  
5 broker or a salesperson acting on behalf of the Firm may provide brokerage services to you. Whenever the Firm is  
6 providing brokerage services to you, the Firm and its brokers and salespersons (hereinafter Agents) owe you, the  
7 customer, the following duties:

- 8 (a) The duty to provide brokerage services to you fairly and honestly.
- 9 (b) The duty to exercise reasonable skill and care in providing brokerage services to you.
- 10 (c) The duty to provide you with accurate information about market conditions within a reasonable time if you request  
11 it, unless disclosure of the information is prohibited by law.
- 12 (d) The duty to disclose to you in writing certain Material Adverse Facts about a property, unless disclosure of the  
13 information is prohibited by law (see lines 42-51).
- 14 (e) The duty to protect your confidentiality. Unless the law requires it, the Firm and its Agents will not disclose your  
15 confidential information or the confidential information of other parties (see lines 23-41).
- 16 (f) The duty to safeguard trust funds and other property held by the Firm or its Agents.
- 17 (g) The duty, when negotiating, to present contract proposals in an objective and unbiased manner and disclose the  
18 advantages and disadvantages of the proposals.

19 Please review this information carefully. An Agent of the Firm can answer your questions about brokerage services,  
20 but if you need legal advice, tax advice, or a professional home inspection, contact an attorney, tax advisor, or home  
21 inspector. This disclosure is required by section 452.135 of the Wisconsin statutes and is for information only. It is a  
22 plain-language summary of the duties owed to a customer under section 452.133(1) of the Wisconsin statutes.

23 **CONFIDENTIALITY NOTICE TO CUSTOMERS**

24 The Firm and its Agents will keep confidential any information given to the  
25 Firm or its Agents in confidence, or any information obtained by the Firm and its Agents that a reasonable person  
26 would want to be kept confidential, unless the information must be disclosed by law or you authorize the Firm to  
27 disclose particular information. The Firm and its Agents shall continue to keep the information confidential after the  
28 Firm is no longer providing brokerage services to you.

29 The following information is required to be disclosed by law:

- 30 1. Material Adverse Facts, as defined in Wis. Stat. § 452.01(5g) (see lines 42-51).
- 31 2. Any facts known by the Firm or its Agents that contradict any information included in a written inspection  
32 report on the property or real estate that is the subject of the transaction.

33 To ensure that the Firm and its Agents are aware of what specific information you consider confidential, you may  
34 list that information below (see lines 35-41) or provide that information to the Firm or its Agents by other means. At a  
35 later time, you may also provide the Firm or its Agents with other information you consider to be confidential.

35 **CONFIDENTIAL INFORMATION:**

36 \_\_\_\_\_  
37 \_\_\_\_\_  
38 **NON-CONFIDENTIAL INFORMATION** (the following information may be disclosed by the Firm and its Agents): \_\_\_\_\_  
39 \_\_\_\_\_  
40 \_\_\_\_\_

41 \_\_\_\_\_  
42 **DEFINITION OF MATERIAL ADVERSE FACTS**

*(Insert information you authorize to be disclosed, such as financial qualification information.)*

43 A "Material Adverse Fact" is defined in Wis. Stat. § 452.01(5g) as an Adverse Fact that a party indicates is of such  
44 significance, or that is generally recognized by a competent licensee as being of such significance to a reasonable  
45 party, that it affects or would affect the party's decision to enter into a contract or agreement concerning a transaction  
46 or affects or would affect the party's decision about the terms of such a contract or agreement.

47 An "Adverse Fact" is defined in Wis. Stat. § 452.01(1e) as a condition or occurrence that a competent licensee  
48 generally recognizes will significantly and adversely affect the value of the property, significantly reduce the structural  
49 integrity of improvements to real estate, or present a significant health risk to occupants of the property; or information  
50 that indicates that a party to a transaction is not able to or does not intend to meet his or her obligations under a  
51 contract or agreement made concerning the transaction.

52 **NOTICE ABOUT SEX OFFENDER REGISTRY**

53 You may obtain information about the sex offender registry and persons  
54 registered with the registry by contacting the Wisconsin Department of Corrections on the Internet at  
55 <http://www.doc.wi.gov> or by telephone at 608-240-5830.

No representation is made as to the legal validity of any provision or the adequacy of any provision in any specific transaction.  
Copyright © 2016 by Wisconsin REALTORS® Association. Drafted by Attorney Debra Peterson Conrad