

Ready for Occupancy!



For Lease

Prime Medical Outpatient Center in Roy, UT

5682 South 3500 West | Roy, Utah

Available: 2,300 RSF

Asking: \$25.00 NNN

- + Generous Tenant Improvement Allowance
- + Prominent Building & Monument Signage Available
- + Ample Parking
- + Tenants include Utah Cardiology, Wee Care Pediatrics, and Oral Health Integrations
- + Highly desirable location on 3500 West, adjacent to Holy Cross Hospital.

Roy is seeing growing demand for healthcare services, fueled by a rising population and ongoing residential and commercial growth. This building offers a strategic location with easy access to major transportation routes, making it a convenient and appealing choice for both patients and healthcare providers.

CONTACT

Rick Peterson

801 792 7425

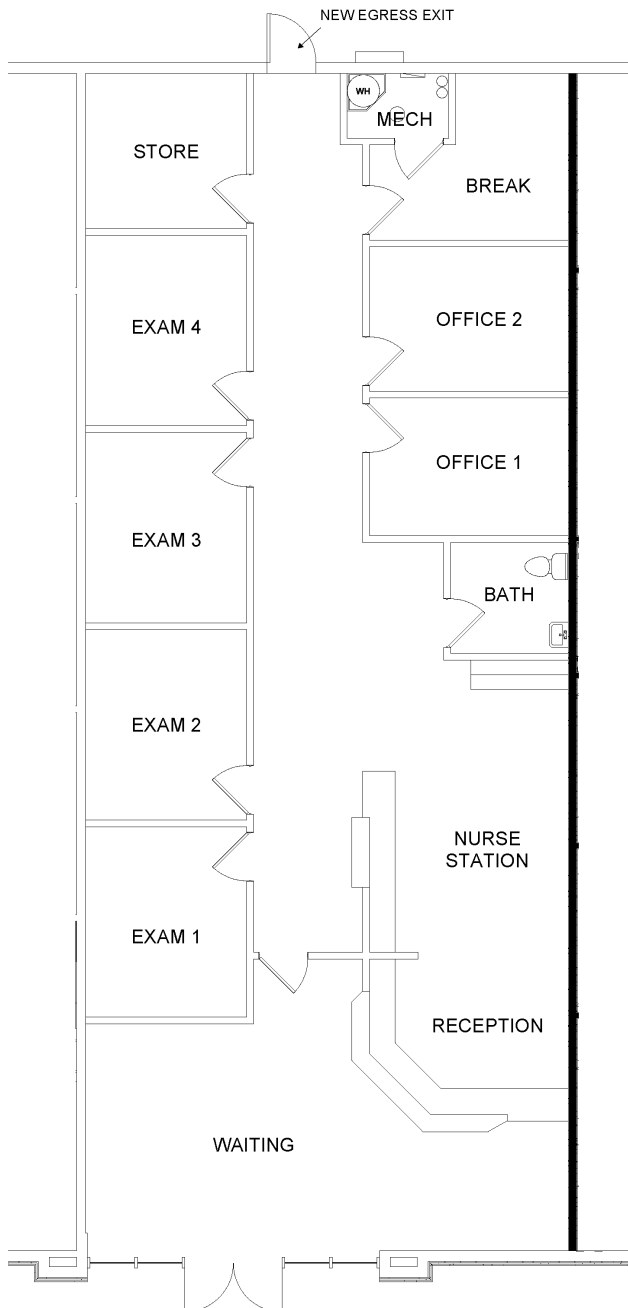
rick@fortstreetpartners.com



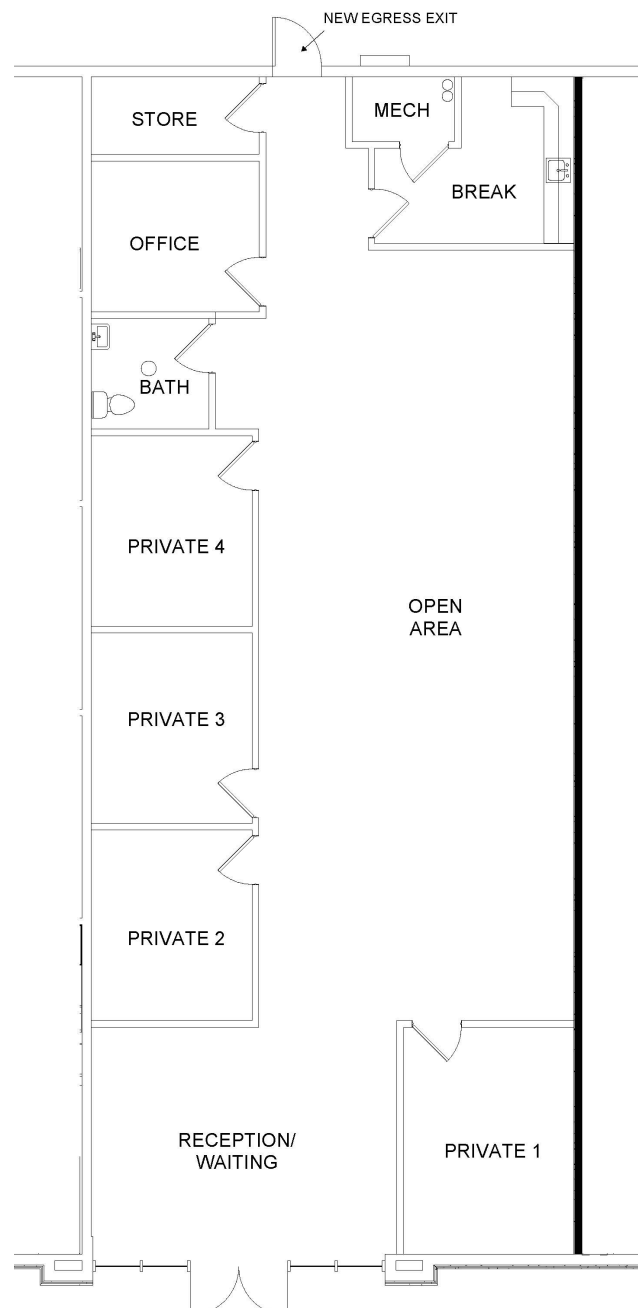
FORT STREET
PARTNERS

Space Plans

Medical Space Plan



PT Space Plan



CONTACT

Rick Peterson

801 792 7425

rick@fortstreetpartners.com



FORT STREET
PARTNERS



CONTACT

Rick Peterson

801 792 7425

rick@fortstreetpartners.com



**FORT STREET
PARTNERS**