

# 286 Mantua Grove Road

## West Deptford, NJ



FOR LEASE



OFFICE



14,000+/- SF

### BUILDING 4 - 14,000+/- SF on 2 FLOORS

- Floor plan can be modified to suit
- Ability to demise space
- 55 designated parking spaces
- Built in 1996
  
- **First Floor: 6,500+/- SF**
- 21 private offices
- 3 restrooms
- 1 large conference room
- 1 kitchenette
- Security system with key fob entrance

### Second Floor: 7,500+/- SF

- 16 private offices
- 2 restrooms
- 2 large conference rooms
- 1 copy room
- Expansive shared updated bullpen
- Executive quarters with large conference room, kitchenette, 2 private offices, 2 bathrooms and private reception
- Security system



### LOCATION OVERVIEW

- 0.5+/- miles to Route I-295
- 11+/- miles to NJ Turnpike Bellmawr Interchange #3
- 14+/- miles to Philadelphia via Walt Whitman Bridge & Ben Franklin Bridge
- Nearby amenities include Dunkin Donuts, Heritage's, Rite Aid, Wawa, McDonald's, Royal Farms, BB&T Bank, Bourbon & Brews Restaurant, Cinder Bar, Idea Asian Restaurant



### FOR MORE INFORMATION

**Jonathan Klear**

☎ 856.433.1801

✉ jonathan.klear@naimertz.com

# NAIMertz



NAI Mertz | 21 Roland Avenue  
Mount Laurel, NJ 08054  
856.234.9600 | [naimertz.com](http://naimertz.com)



# 286 Mantua Grove Road

West Deptford, NJ



FOR LEASE

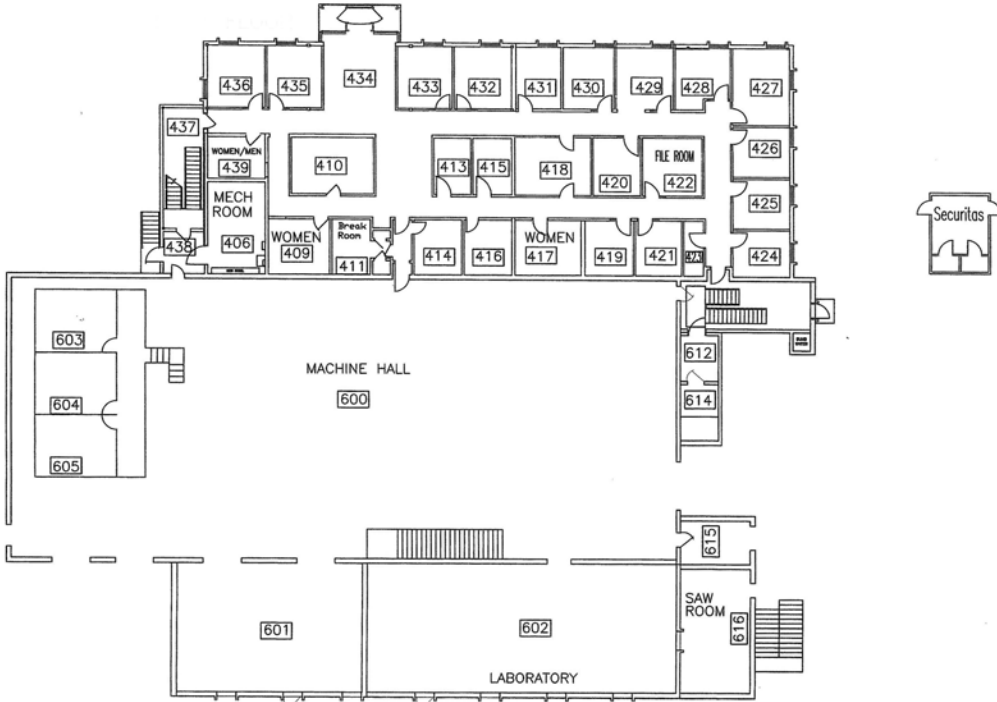


OFFICE



14,000+/- SF

## Building 4 Floor Plans



First Floor



Second Floor



# 286 Mantua Grove Road

West Deptford, NJ



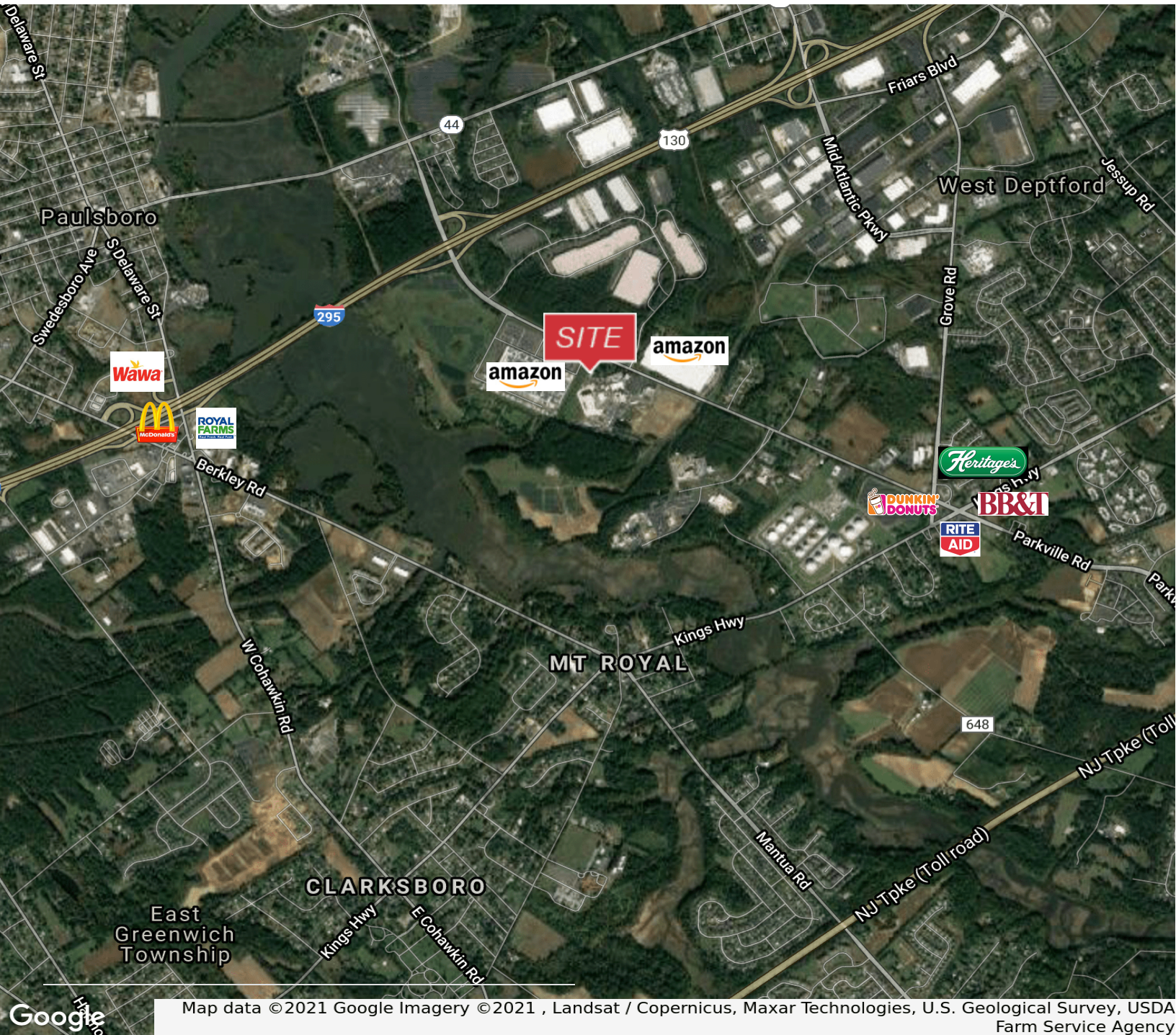
FOR LEASE



OFFICE



14,000+/- SF



Map data ©2021 Google Imagery ©2021, Landsat / Copernicus, Maxar Technologies, U.S. Geological Survey, USDA Farm Service Agency

## FOR MORE INFORMATION

**Jonathan Klear**  
856.433.1801  
jonathan.klear@naimertz.com



NAI Mertz | 21 Roland Avenue  
Mount Laurel, NJ 08054  
856.234.9600 | naimertz.com





# 286 Mantua Grove Road

## West Deptford, NJ



FOR LEASE



OFFICE



3,000+/- SF

### BUILDING 8 - 3,000+/- SF

- Floor plan can be modified to suit
- Ability to demise space
- 20 designated parking spaces
- Built in 1963
- 9 private offices
- 2 restrooms
- 1 large conference room with telecom & A.V.
- 1 large kitchenette
- Security system with key fob entrance

### LOCATION OVERVIEW

- 0.5+/- miles to Route I-295
- 11+/- miles to NJ Turnpike Bellmawr Interchange #3
- 14+/- miles to Philadelphia via Walt Whitman Bridge & Ben Franklin Bridge
- Nearby amenities include Dunkin Donuts, Heritage's, Rite Aid, Wawa, McDonald's, Royal Farms, BB&T Bank, Bourbon & Brews Restaurant, Cinder Bar, Idea Asian Restaurant



### FOR MORE INFORMATION

**Jonathan Klear**

☎ 856.433.1801

✉ [jonathan.klear@naimertz.com](mailto:jonathan.klear@naimertz.com)

# NAIMertz



NAI Mertz | 21 Roland Avenue  
Mount Laurel, NJ 08054  
856.234.9600 | [naimertz.com](http://naimertz.com)





286 Mantua Grove Road

West Deptford, NJ



FOR LEASE

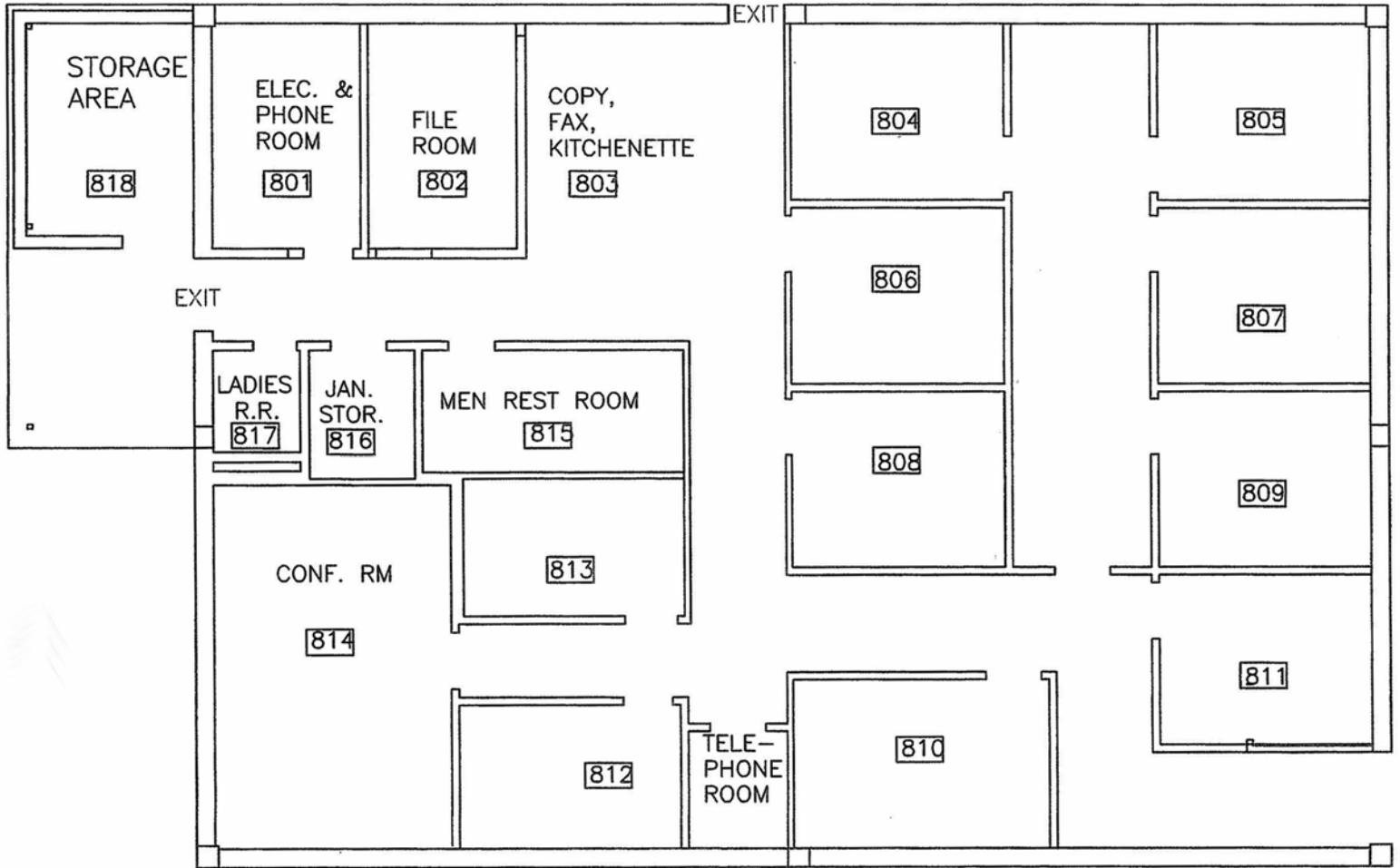


OFFICE



3,000+/- SF

### Building 8 Floor Plan





# 286 Mantua Grove Road

## West Deptford, NJ



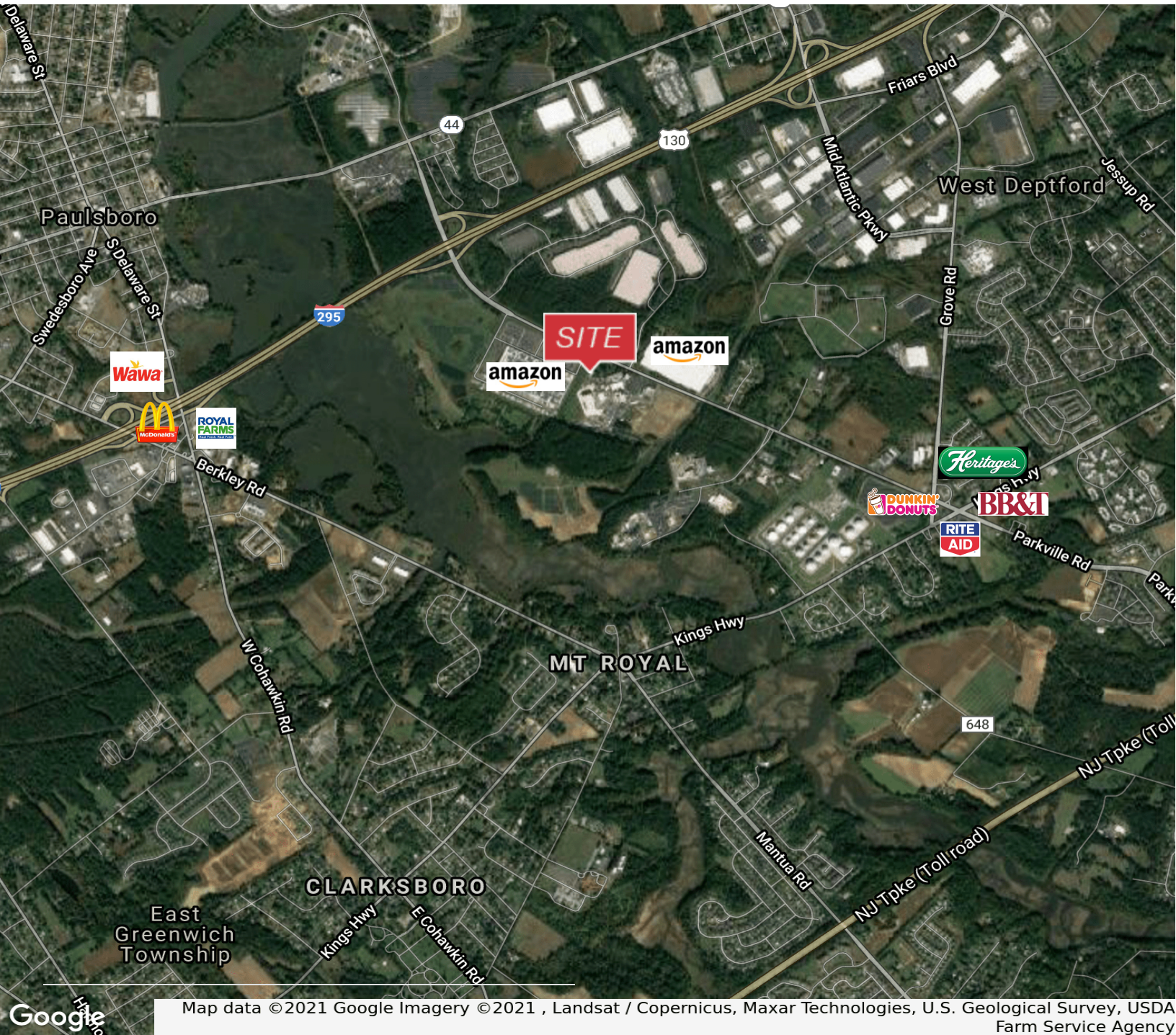
FOR LEASE



OFFICE



3,000+/- SF



Map data ©2021 Google Imagery ©2021 , Landsat / Copernicus, Maxar Technologies, U.S. Geological Survey, USDA Farm Service Agency

### FOR MORE INFORMATION

**Jonathan Klear**  
856.433.1801  
jonathan.klear@naimertz.com



NAI Mertz | 21 Roland Avenue  
Mount Laurel, NJ 08054  
856.234.9600 | naimertz.com

