



THE VILLAGE AT
Cherry Grove

THE VILLAGE AT CHERRY GROVE – A NEW RESIDENTIAL SUBDIVISION IN BATTLE GROUND, WASHINGTON

Cherry Grove is an exciting new planned community of homes coming soon to the heart of Battle Ground, Washington. Designed to meet the growing demand for high-quality suburban living, Cherry Grove will offer thoughtfully crafted homes in a neighborhood setting that blends comfort, convenience, and natural beauty.

Positioned in a rapidly growing area just minutes from downtown Battle Ground, this development presents a unique investment opportunity in one of Southwest Washington's most desirable regions. With strong local demand, top-rated schools, and a family-friendly environment, Cherry Grove is poised to become a flagship community in the region.





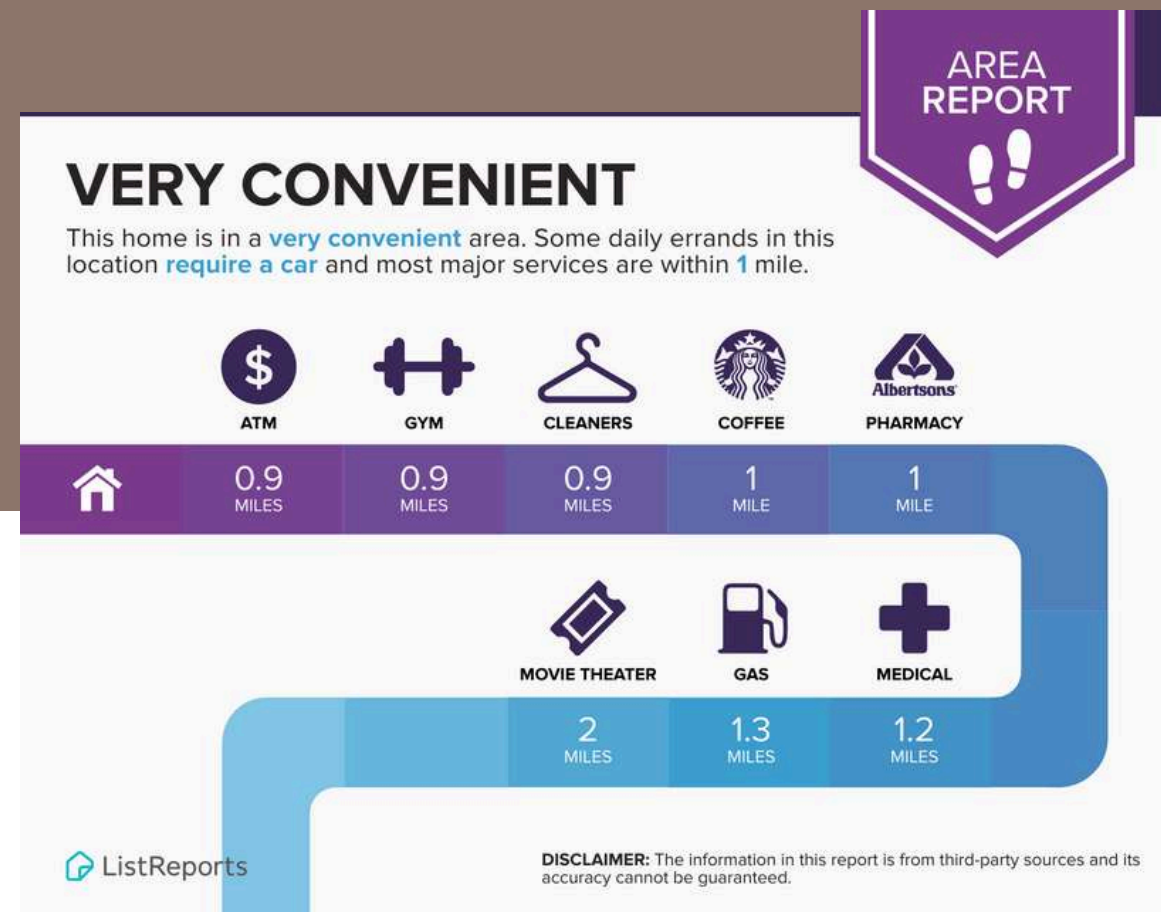
ABOUT BATTLE GROUND

Strategically located in the heart of Clark County, Battle Ground is a thriving city of 22,470 residents and a growing number of businesses and service organizations dedicated to preserving a strong sense of community.

As the commercial and social hub of north Clark County—serving a broader regional population of over 80,000—Battle Ground offers a vibrant mix of retail, dining, and professional services.

Just 30 minutes from Portland, Oregon, and Portland International Airport, the city provides a perfect balance of peaceful, natural surroundings and seamless access to the Portland-Vancouver metro area.

With its proximity to the Pacific Coast and Cascade Mountains, Battle Ground is a haven for outdoor enthusiasts, offering year-round recreation through local parks, lakes, rivers, and forested trails.



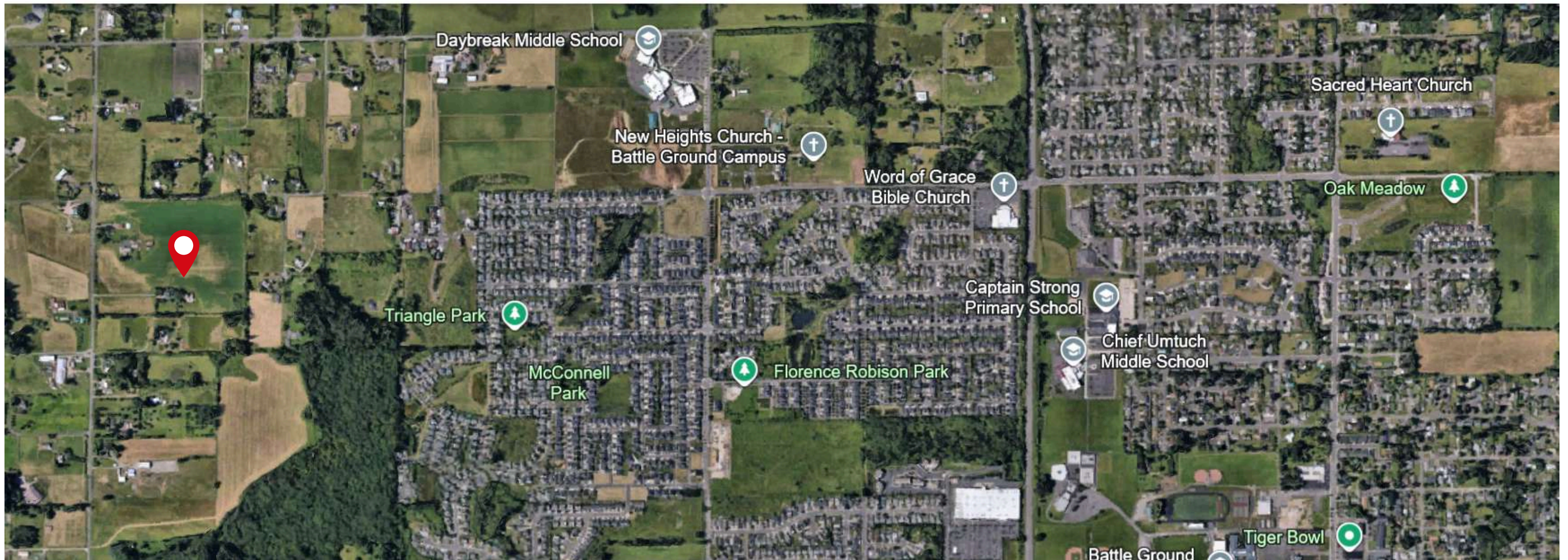
THE GREAT OUTDOORS

Within 10 miles: 8 golf courses, 5 parks, 2 dog parks

Battle Ground Lake State Park

Lewisville Regional Park (Clark County's oldest park)

CHERRY GROVE LOCATION



SITE AMENITY AND OVERVIEW

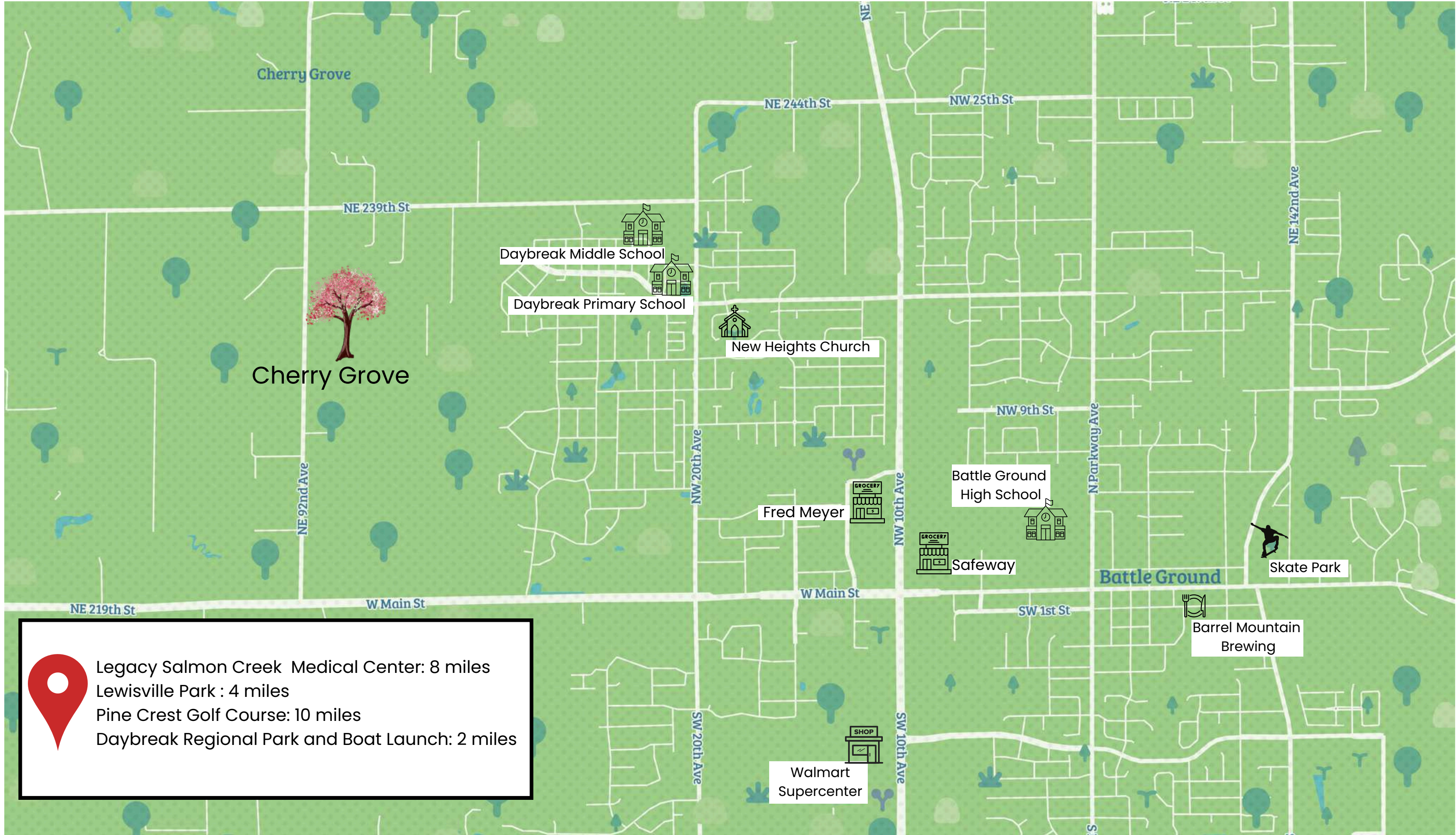
PHASE 1 & 2

Lot Sq Ft	Lot Dimensions (ft)	QTY
2,000-2,499	20x100 24x104 25x90 25x100	79
2,500-2,999	25x100 29x100 30x84 33x74	72
3,000-3,499	29x104 33x84 37x84 38x100	22
3,500-4,022	25x139 39x104 40x84 41x100	7

TOTAL LOTS 180



NEARBY LOCATIONS



SITE PHOTOS



SITE PHOTOS



CONTACT



Jeff Wunder

Jeff Wunder, REALTOR
360-931-1178 mobile
Jeff@CoppiceCapital.com
jeffwunder.kw.com



Lisa Wunder

Lisa Wunder, REALTOR
360-921-6527 mobile
lisawunder@aol.com
lisawunderrealtor.kw.com



2211 E Mill Plain Blvd. Vancouver