

ALTERATION TO:
CORNERSTONE SEARCH GROUP 350 MAIN STREET, CHATHAM, NEW JERSEY



PROPOSED RENDERING 'A' - STREETScape



PROPOSED RENDERING 'B'

KLESSE FORBES ARCHITECTS 38 CHATHAM ROAD, SHORT HILLS, NEW JERSEY *[Signature]* B0A-1



KLESSE ARCHITECTS
38 CHATHAM ROAD
SHORT HILLS, NEW JERSEY 07078
PHONE (973) 379-6802
KLESSE.COM

TIMOTHY P. KLESSE, AIA, ASID
NJ 09204 NY 027863

ROBERT W. FORBES, AIA, LEED AP
NJ 21A101962600

ALTERATIONS TO:
Cornerstone Search Group
350 Main Street
Chatham, NJ 07928

LEGEND OF CONSTRUCTION

- EXIST. PARTITION TO REMAIN
 - NEW PARTITION
 - NEW 42" HIGH PARTITION
 - NEW RATED PARTITION
 - KITCHEN
 - ROOM NAME
 - ROOM NUMBER
 - CEILING/WALL HEIGHT
 - DETAIL DESIGNATION
 - SHEET ON WHICH DRAWN
 - SECTION DESIGNATION
 - SHEET ON WHICH DRAWN
 - ELEVATION DESIGNATION
 - SHEET ON WHICH DRAWN
 - PARTITION TYPE SEE SHEET A-1
 - REVISION NO.
 - FINISH TAG
- BEAM CONFIGURATIONS:
FLUSH RECESSED DROPPED

All structure as indicated on plans is for floor above
This document, and the ideas and designs incorporated herein, as an instrument of professional service, is the property of Klesse Associates P.A. and is not to be used in whole or in part without the written authorization of Klesse Associates P.A.

NO.	REVISION	DATE

DRAWING TITLE:
FOUNTNTION / BASEMENT PLAN &
FIRST FLOOR PLAN

IF THIS LINE MEASURES 3" DRAWING IS AT FULL SCALE
IF THIS LINE MEASURES 1-1/2" DRAWING IS AT 1/2 SCALE
DATE:

07/20/2022

SCALE:
1/4" = 1'-0"
SEE GRAPHIC SCALE ABOVE

DRAWN BY:

AF/RF

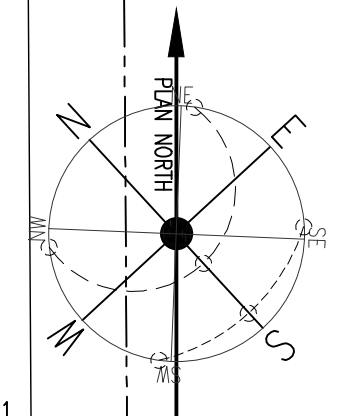
CHECKED BY:

TK

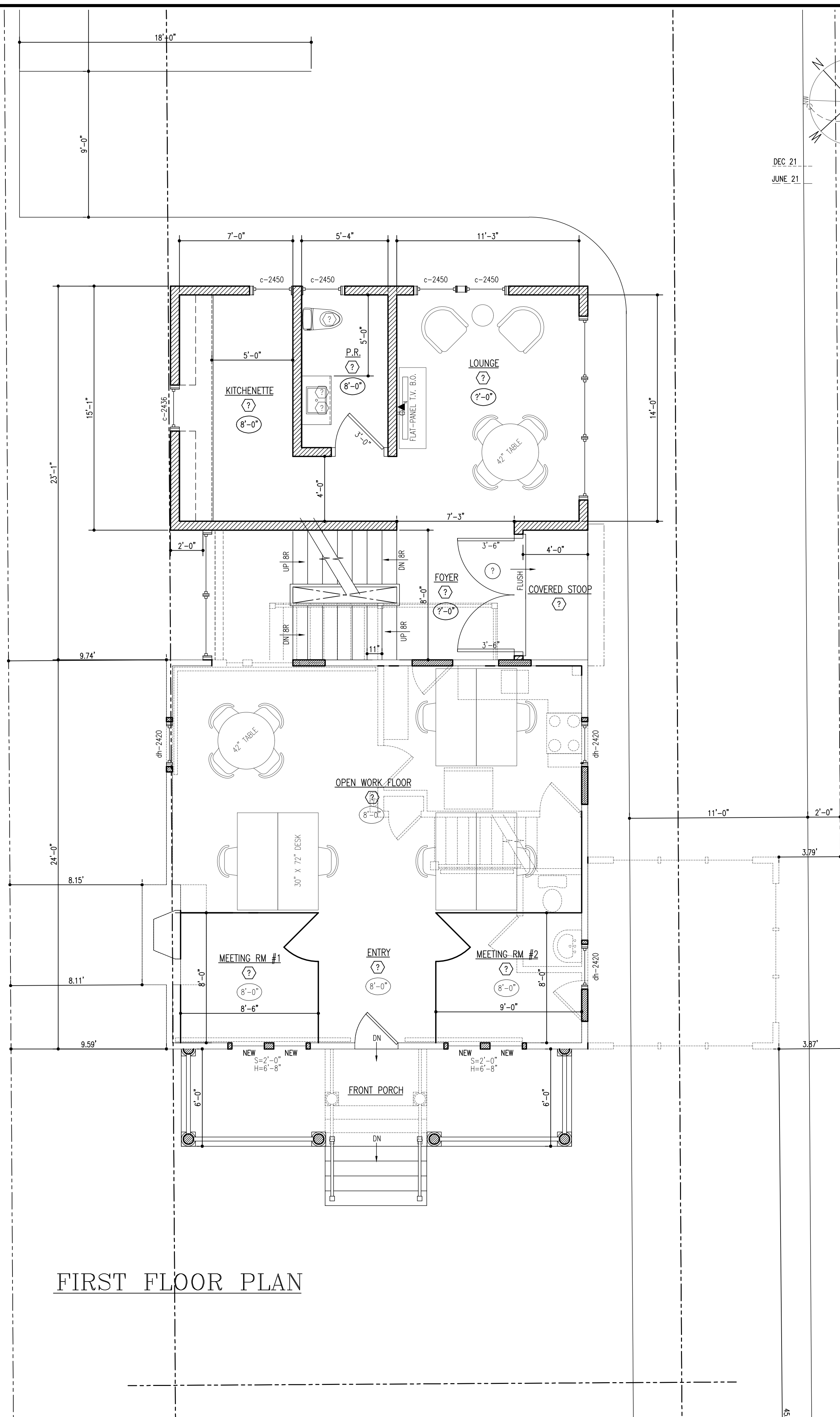
DRAWING NUMBER

BOA-2

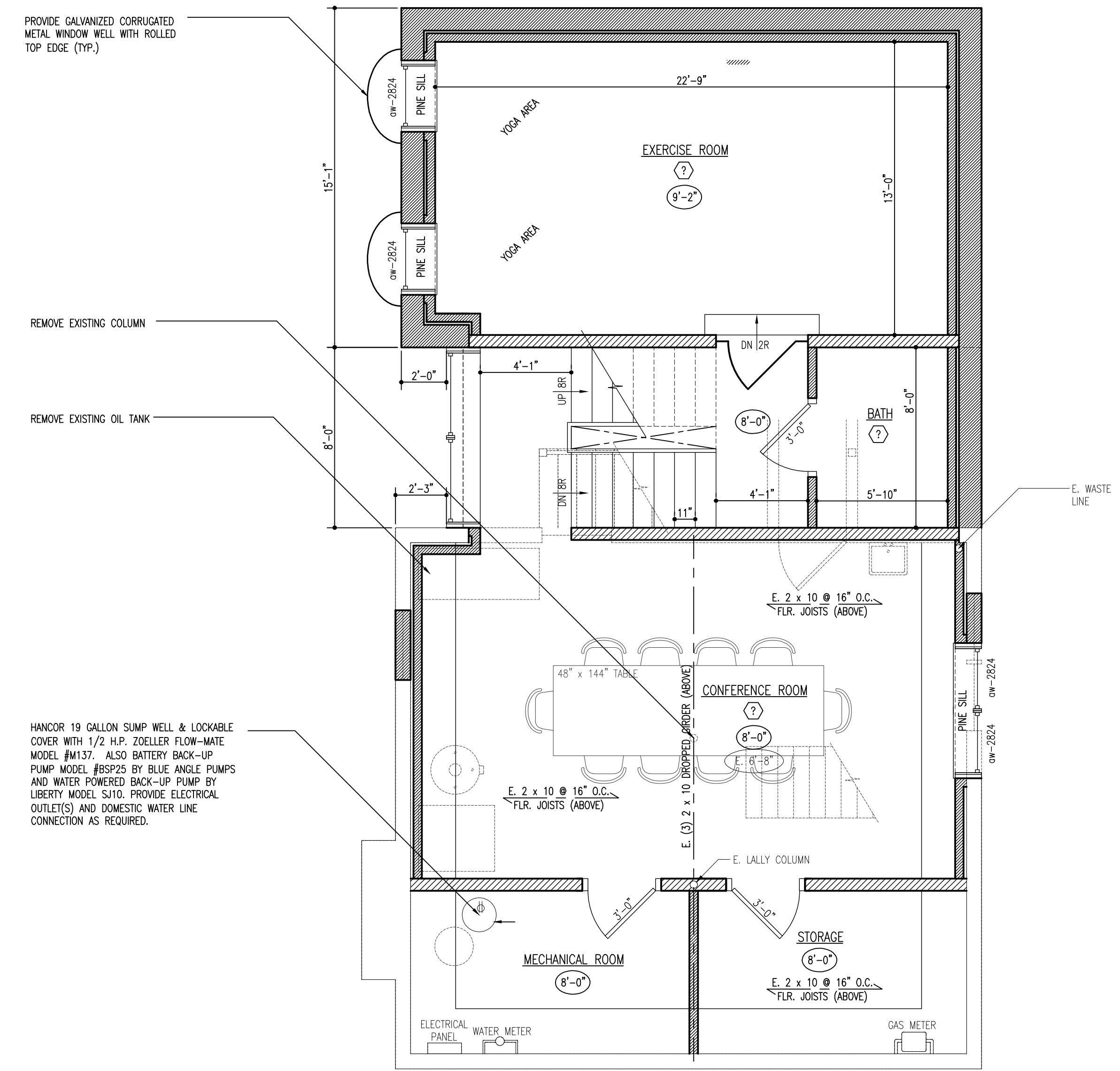
PROJECT No 2201 SHEET 2 OF 5



DEC 21
JUNE 21



FIRST FLOOR PLAN



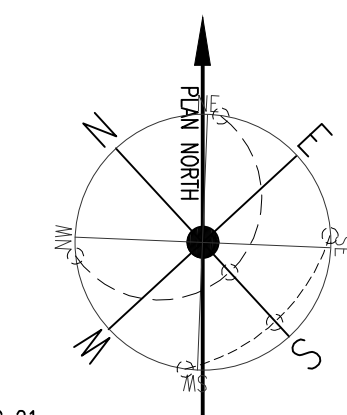
FOUNDATION / BASEMENT PLAN

PROVIDE GALVANIZED CORRUGATED METAL WINDOW WELL WITH ROLLED TOP EDGE (TYP.)

REMOVE EXISTING COLUMN

REMOVE EXISTING OIL TANK

HANGOR 19 GALLON SUMP WELL & LOCKABLE COVER WITH 1/2 H.P. ZOELLER FLOW-MATE MODEL #M137. ALSO BATTERY BACK-UP PUMP MODEL JBS275 BY BLUE ANGLE PUMPS AND WATER POWERED BACK-UP PUMP BY LIBERTY MODEL SJ10. PROVIDE ELECTRICAL OUTLET(S) AND DOMESTIC WATER LINE CONNECTION AS REQUIRED.



DEC 21
JUNE 21



KLESSE ARCHITECTS
38 CHATHAM ROAD
SHORT HILLS, NEW JERSEY 07078
PHONE (973) 379-6802
KLESSE.COM

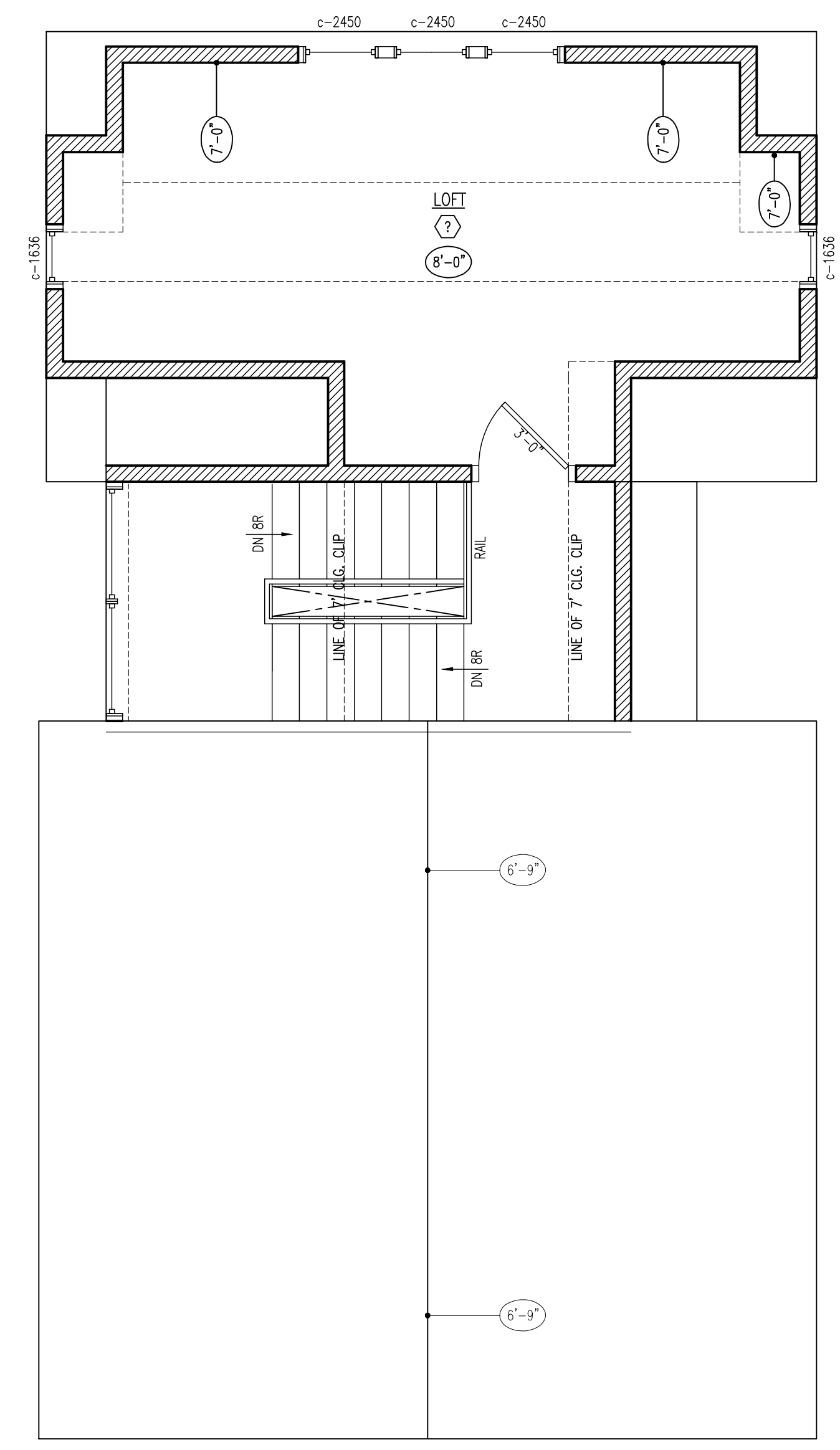
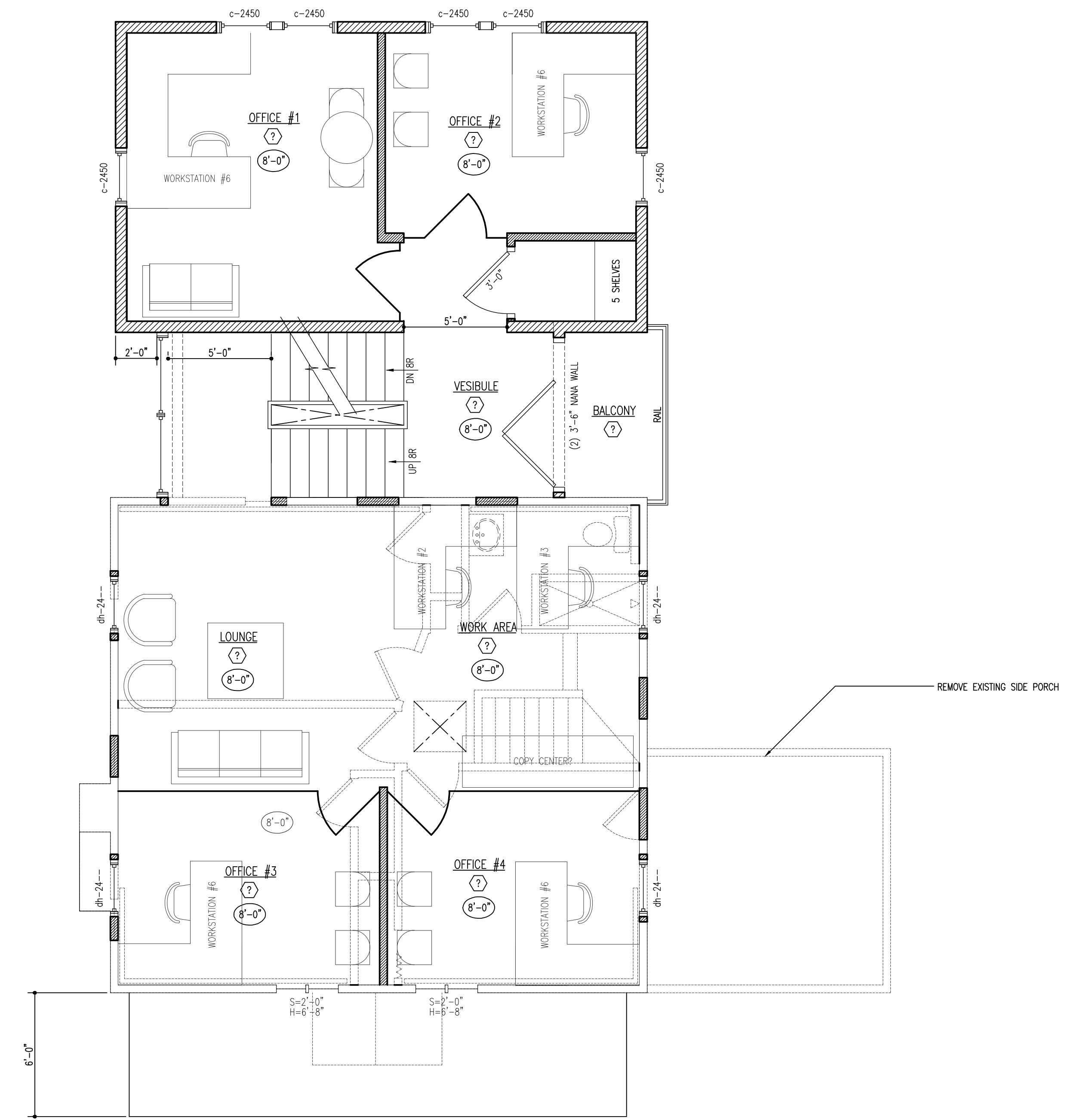
TIMOTHY P. KLESSE, AIA, ASID
NJ 09204 NY 027863

ROBERT W. FORBES, AIA, LEED AP
NJ 21A101962600

ALTERATIONS TO:
Cornerstone Search Group
350 Main Street
Chatham, NJ 07928

LEGEND OF CONSTRUCTION

- EXIST. PARTITION TO REMAIN
 - NEW PARTITION
 - NEW 42" HIGH PARTITION
 - NEW RATED PARTITION
 - KITCHEN
 - ROOM NAME
 - ROOM NUMBER
 - CEILING/WALL HEIGHT
 - DETAIL DESIGNATION
 - SHEET ON WHICH DRAWN
 - SECTION DESIGNATION
 - SHEET ON WHICH DRAWN
 - ELEVATION DESIGNATION
 - SHEET ON WHICH DRAWN
 - PARTITION TYPE SEE SHEET A-1
 - REVISION NO.
 - FINISH TAG
- BEAM CONFIGURATIONS:
FLUSH RECESSED DROPPED



All structure as indicated on plans is for floor above.
This document, and the ideas and designs incorporated herein, as an instrument of professional service, is the property of Klesse Associates P.A. and is not to be used in whole or in part without the written authorization of Klesse Associates P.A.

NO.	REVISION	DATE

DRAWING TITLE :
SECOND & HABITABLE ATTIC PLAN

IF THIS LINE MEASURES 3" DRAWING IS AT FULL SCALE
IF THIS LINE MEASURES 1-1/2" DRAWING IS AT 1/2 SCALE
DATE: 07/20/2022

SCALE:
1/4" = 1'-0"
SEE GRAPHIC SCALE ABOVE
DRAWN BY: AF/RF
CHECKED BY: TK

DRAWING NUMBER
BOA-3
PROJECT No 2201 SHEET 3 OF 5



KLESSE ARCHITECTS
 38 CHATHAM ROAD
 SHORT HILLS, NEW JERSEY 07078
 PHONE (973) 379-6802
 KLESSE.COM

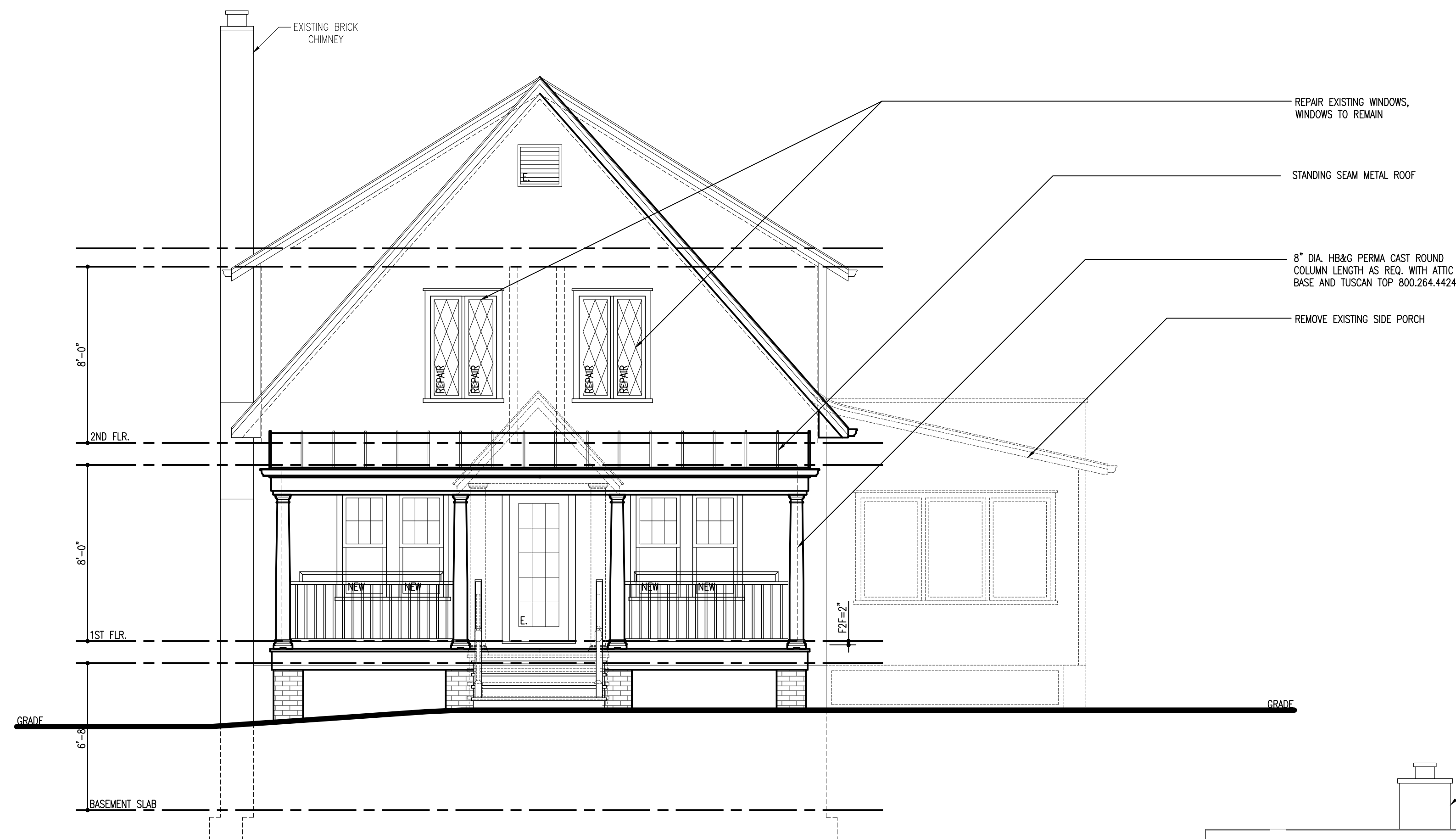
TIMOTHY P. KLESSE, AIA, ASID
 NJ 09204 NY 027863

ROBERT W. FORBES, AIA, LEED AP
 NJ 21A101962600

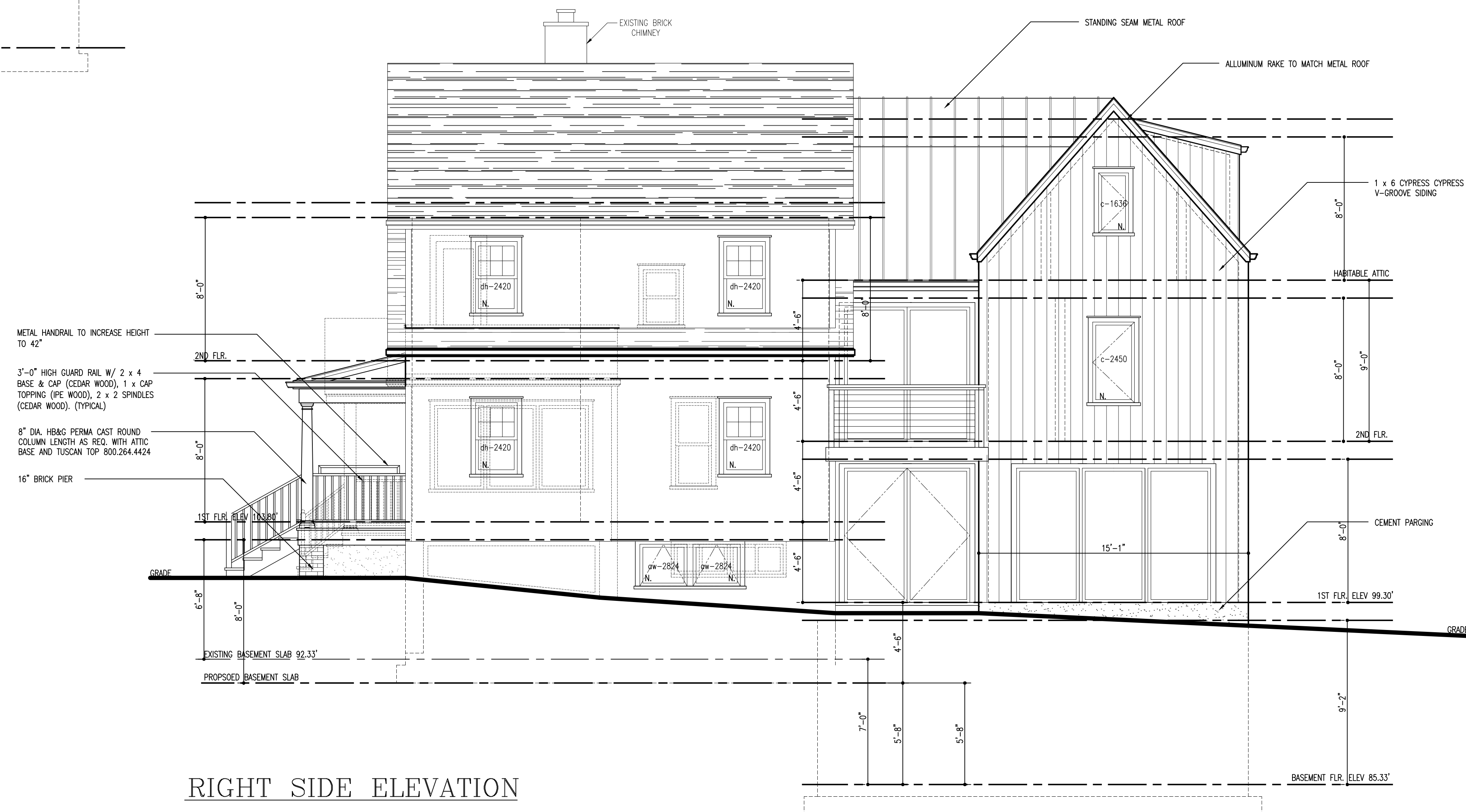
ALTERATIONS TO:
 Cornerstone Search Group
 350 Main Street
 Chatham, NJ 07928

LEGEND OF CONSTRUCTION

- EXIST. PARTITION TO REMAIN
 - NEW PARTITION
 - NEW 42" HIGH PARTITION
 - NEW RATED PARTITION
 - ROOM NAME
 - ROOM NUMBER
 - CEILING/WALL HEIGHT
 - DETAIL DESIGNATION SHEET ON WHICH DRAWN
 - SECTION DESIGNATION SHEET ON WHICH DRAWN
 - ELEVATION DESIGNATION SHEET ON WHICH DRAWN
 - PARTITION TYPE SEE SHEET A-1
 - REVISION NO.
 - FINISH TAG
- BEAM CONFIGURATIONS:
 FLUSH RECESSED DROPPED
-



FRONT ELEVATION



RIGHT SIDE ELEVATION

All structure as indicated on plans is for floor above
 This document, and the ideas and designs incorporated herein, as an instrument of professional service, is the property of Klesse Associates P.A. and is not to be used in whole or in part without the written authorization of Klesse Associates P.A.

NO.	REVISION	DATE

DRAWING TITLE:
 FRONT & RIGHT SIDE ELEVATION

IF THIS LINE MEASURES 3" DRAWING IS AT FULL SCALE
 IF THIS LINE MEASURES 1-1/2" DRAWING IS AT 1/2 SCALE

DATE:
 07/20/2022

SCALE:
 1/4" = 1'-0"
 SEE GRAPHIC SCALE ABOVE

DRAWN BY:
 AF/RF

CHECKED BY:
 TK

DRAWING NUMBER
 BOA-4

PROJECT No 2201 SHEET 4 OF 5



KLESSE ARCHITECTS
 38 CHATHAM ROAD
 SHORT HILLS, NEW JERSEY 07078
 PHONE (973) 379-6802
 KLESSE.COM

TIMOTHY P. KLESSE, AIA, ASID
 NJ 09204 NY 027863

ROBERT W. FORBES, AIA, LEED AP
 NJ 21A101962600

ALTERATIONS TO:

Cornerstone Search Group
 350 Main Street
 Chatham, NJ 07928

LEGEND OF CONSTRUCTION

- EXIST. PARTITION TO REMAIN
- NEW PARTITION
- NEW 42" HIGH PARTITION
- NEW RATED PARTITION
- KITCHEN ROOM NAME
- ROOM NUMBER
- CEILING/WALL HEIGHT
- DETAIL DESIGNATION SHEET ON WHICH DRAWN
- SECTION DESIGNATION SHEET ON WHICH DRAWN
- ELEVATION DESIGNATION SHEET ON WHICH DRAWN
- PARTITION TYPE SEE SHEET A-1
- REVISION NO.
- FINISH TAG
- BEAM CONFIGURATIONS:
FLUSH RECESSED DROPPED

All structure as indicated on plans is for floor above
 This document, and the ideas and designs incorporated herein,
 as an instrument of professional service, is the property of
 Klesse Associates P.A. and is not to be used in whole or in part
 without the written authorization of Klesse Associates P.A.

NO.	REVISION	DATE

DRAWING TITLE :
FRONT & RIGHT SIDE ELEVATION

IF THIS LINE MEASURES 3" DRAWING IS AT FULL SCALE
 IF THIS LINE MEASURES 1-1/2" DRAWING IS AT 1/2 SCALE

DATE: 07/20/2022

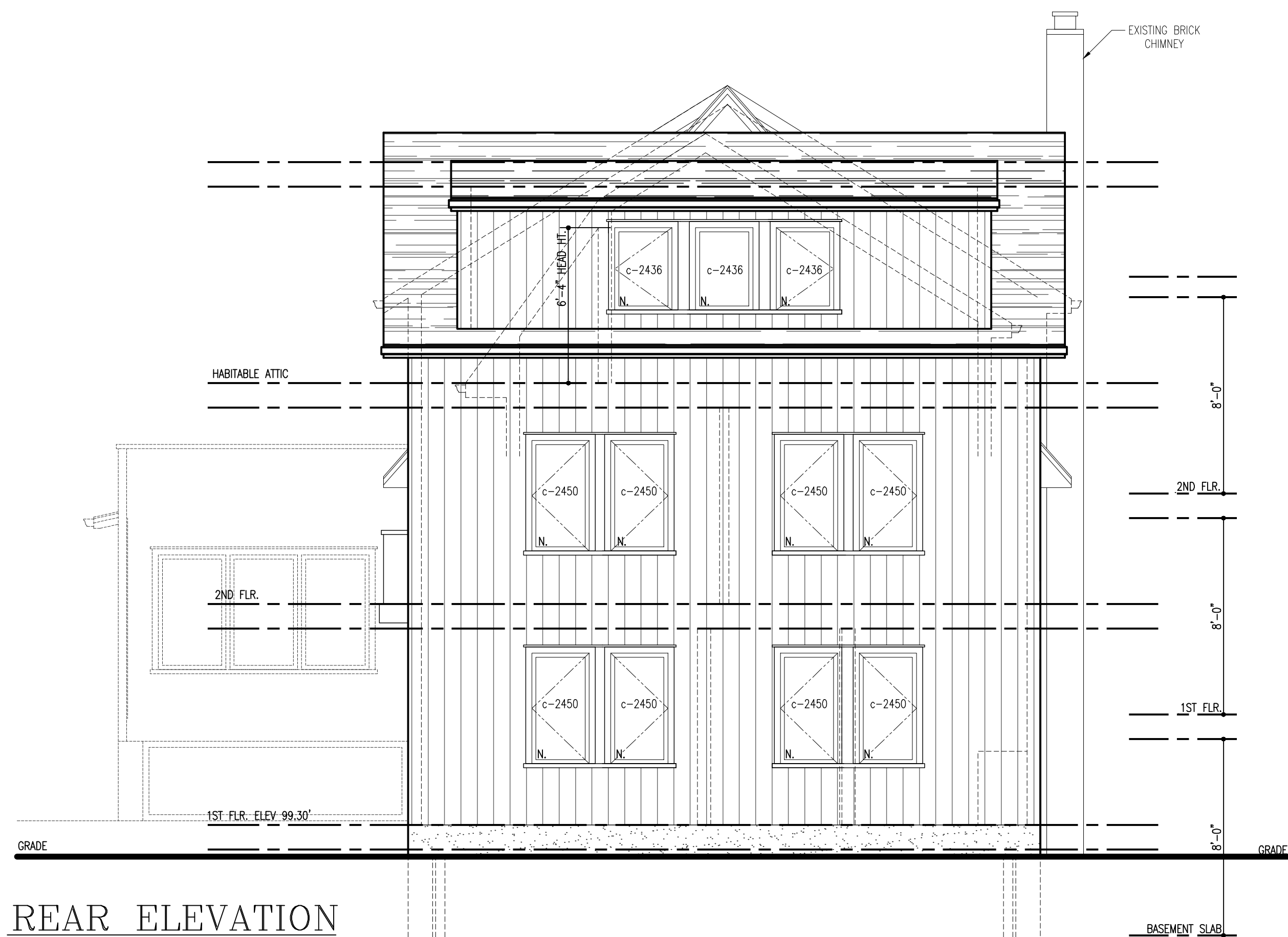
SCALE:
 1/4" = 1'-0"
 SEE GRAPHIC SCALE ABOVE

DRAWN BY:
 AP/RF
 CHECKED BY: TK

DRAWING NUMBER

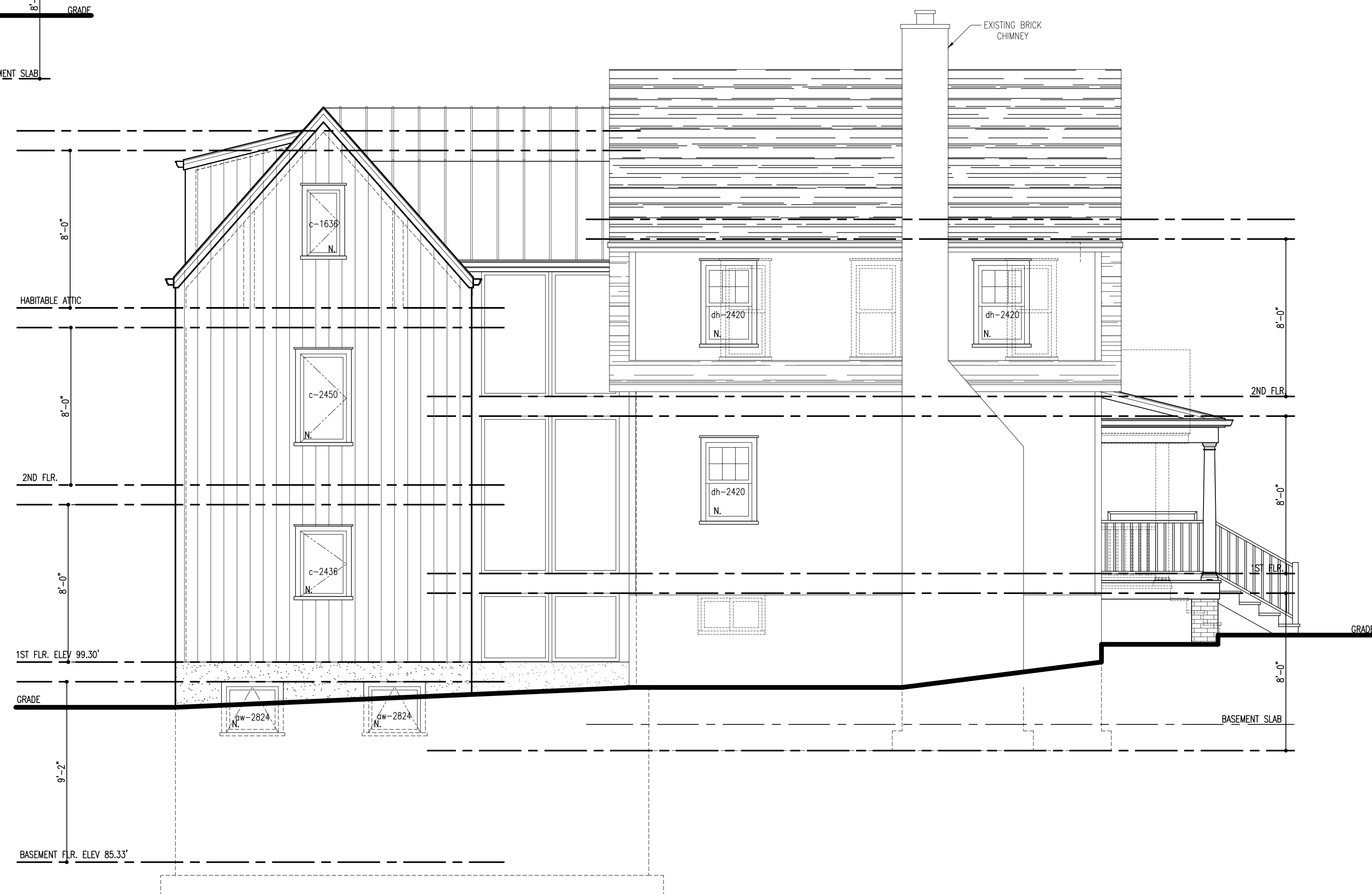
BOA-5

PROJECT No 2201 SHEET 5 OF 5



REAR ELEVATION

GENERAL NOTES:
 1. SEE BOA-5 FOR TYPICAL NOTES



LEFT SIDE ELEVATION

GENERAL NOTES:
 1. SEE BOA-5 FOR TYPICAL NOTES