



355 Mountain View Road #8 Johnstown, CO 80534 | \$186,000

Offering Highlights

- Zoning: I-1 (Light Industrial, Johnstown)
- 808 SF (16' x 50.5')
- OHD 14' x 14' with remote control and keypad
- Ceiling Height: 15'3" to beam
- Electric heater 220v
- Electric for rest of unit: 50amp and 120v
- No water to unit
- Bathroom: Common with keypad entry in standalone structure
- Owner's Association dues: \$85.00/Month



Rhett Strom

Partner | Commercial Broker

970.692.4454 Mobile
rstrom@thegroupinc.com
www.TheGroupInc.com



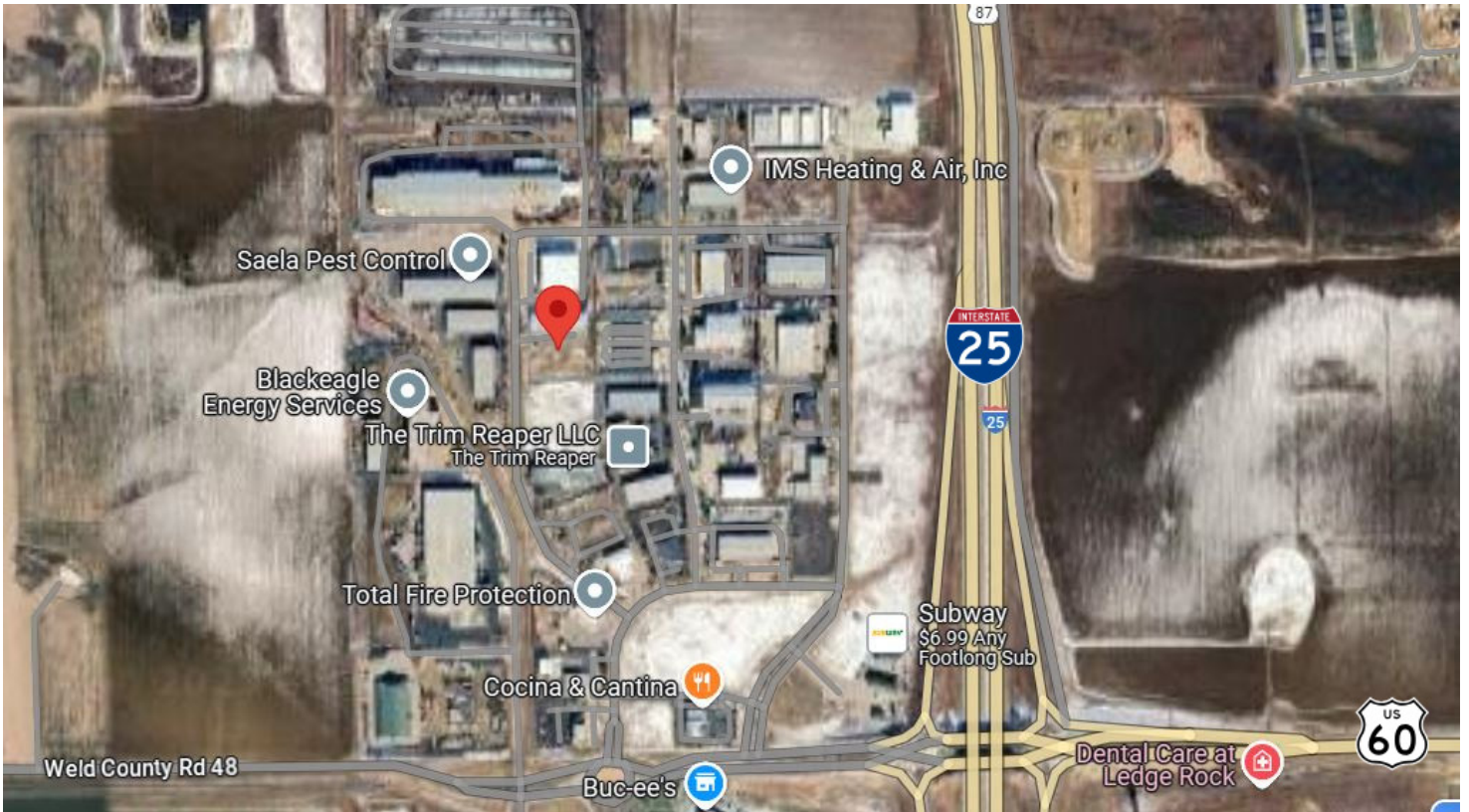
TheGroup

The information listed above has been obtained from sources we believe to be reliable, however, we accept no responsibility for its accuracy. 8.4.2025.





355 Mountain View Road #8
Johnstown, CO 80534 | \$186,000



Rhett Strom
 Commercial Broker | Partner
 970.692.4454 Mobile
 rstrom@thegroupinc.com



www.TheGroupInc.com