

FOR SALE/LEASE | RETAIL/INDUSTRIAL

172 Main Street | South Portland, ME



12,694± SF RETAIL/INDUSTRIAL

- 375'± of frontage on Main Street
- Highly visible location on Route One with traffic counts of 9,510± cars/day
- Two overhead doors and large billboard sign
- Large fenced in yard area

SALE PRICE: \$2,500,000

LEASE RATE: \$13.00/SF NNN



JENNIFER SMALL, CCIM

207.772.6871 D

207.233.6872 C

jennifer@malonecb.com



JOE MALONE, CCIM

207.773.2554 D

207.233.8000 C

joe@malonecb.com

MALONE COMMERCIAL BROKERS

5 Moulton Street • Suite 3

Portland, ME 04101

207.772.2422 • malonecb.com

PROPERTY SUMMARY

172 Main Street | South Portland, ME



OWNER: PH Warren Ave, LLC

DEED: Book 29705, Page 0231

ASSESSOR: Map 32, Lot 113

LOT SIZE: 2.5± AC

BUILDING SIZE: 12,694± SF

YEAR BUILT: 1963

CONSTRUCTION: Masonry

ROOF: Flat

SIDING: Concrete block

ELECTRICITY: 440 amps; 3 phase

LOADING: Two (2) overhead doors

CEILING HEIGHT: 16'±

HVAC: Forced hot water; oil

UTILITIES: Municipal water & sewer

RESTROOM: Four (4)

SPRINKLER: Wet system

SIGNAGE: On building & large pylon

PARKING: Ample on-site

ROAD FRONTAGE: 375'±

ZONING: Commercial

LEASE RATE: \$13.00/SF NNN

SALE PRICE: \$2,500,000

IMPROVEMENTS:

- New mini splits in the office (2)
- New heaters in the warehouse (3)
- All new bathroom fixtures for all the bathrooms
- Significant demo
- Exterior painting
- Several new windows
- Roof work

ZONING PERMITTED USES

- Retail businesses and service establishments including warehousing and wholesale distribution related thereto, but exclusive of junkyards, salvaging operations; outdoor sales and services.
- Business and professional offices.
- Fully enclosed places of assembly, amusement, culture and government.
- Clubs, lodging establishments, and restaurants.
- Transportation termini.
- Storing and handling of petroleum and/or petroleum products, excluding automobile filling stations; provided, however, that any such storing and handling of petroleum and/or petroleum products shall not include the bulk loading of crude oil onto any marine tank vessel.
- Residential uses in air space above the preceding permitted uses and at net densities not less than ten (10) or more than seventeen (17) dwelling units per acre.
- Accessory buildings and uses, including roof-mounted solar energy systems, small-scale ground-mounted solar energy systems, and telecommunication antennas, except that such antennas may not be placed on exempt towers.
- Recreational or community activity buildings, grounds for games or sports, except those operated for a profit.
- Charitable and philanthropic organizations.
- Child, adult or combined day care centers.
- Marijuana testing facility or medical marijuana testing facility.
- Marinas.
- Self-storage facility.

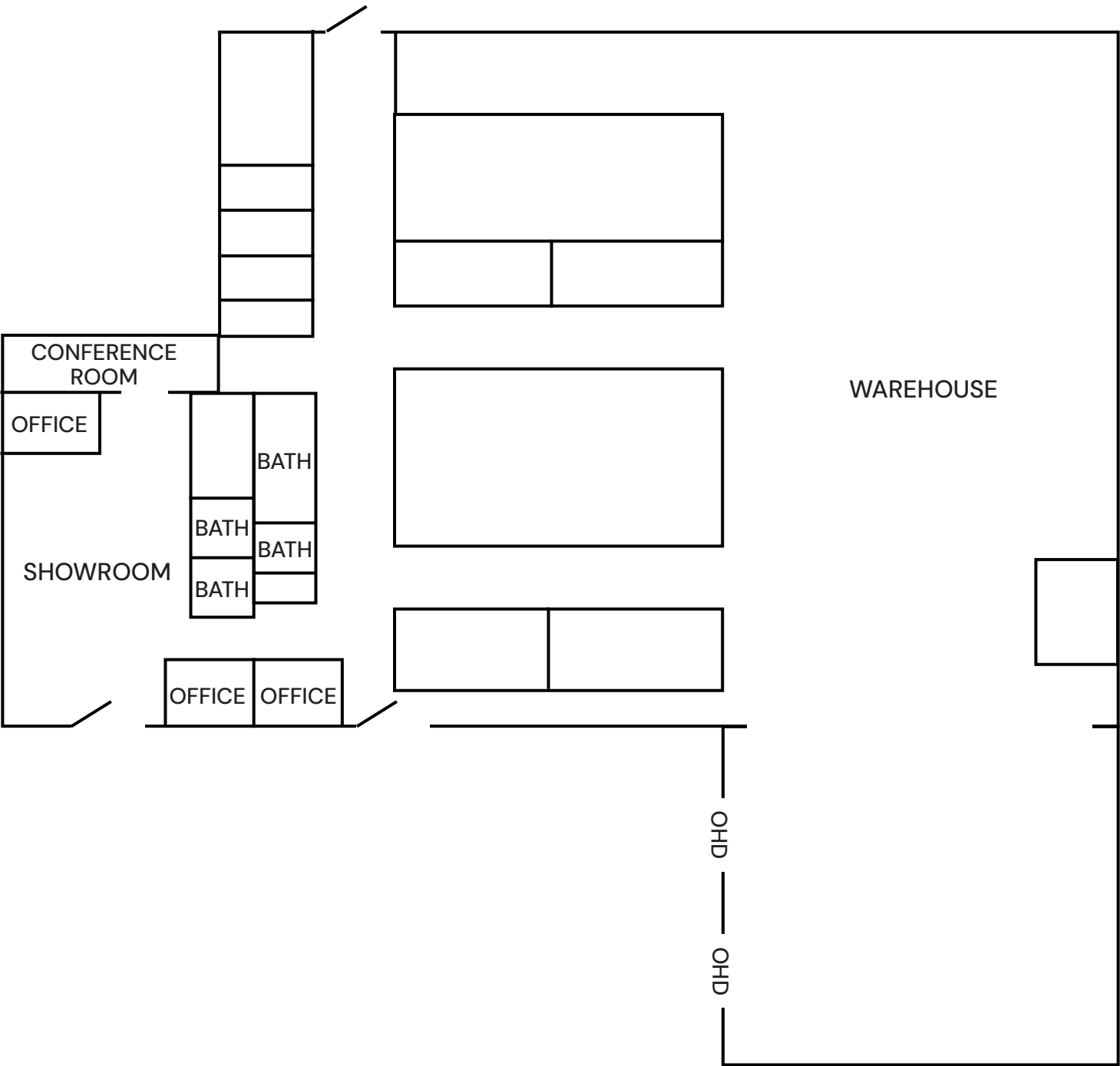
PHOTOS

172 Main Street | South Portland, ME



FLOOR PLAN

172 Main Street | South Portland, ME



FOR SALE/LEASE | RETAIL/INDUSTRIAL

172 Main Street | South Portland, ME



Data SIO, NOAA, U.S. Navy, NGA, GEBCO

This document has been prepared by Malone Commercial Brokers for advertising and general information only. Malone Commercial Brokers makes no guarantees, representations or warranties of any kind, expressed or implied, regarding, but not limited to, warranties of content, accuracy, and reliability. Any interested party should undertake their own inquiries as to the accuracy of the information. Malone Commercial Brokers excludes unequivocally all informed or implied terms, conditions and warranties arising out of this document and excludes all liability for loss and damages there from. All data is subject to change of price, error, omissions, other conditions or withdrawal without notice. Malone Commercial Brokers is acting as the Seller's/Lessor's agent in the marketing of this property.



JENNIFER SMALL, CCIM

207.772.6871 D

207.233.6872 C

jennifer@malonecb.com



JOE MALONE, CCIM

207.773.2554 D

207.233.8000 C

joe@malonecb.com

MALONE COMMERCIAL BROKERS

5 Moulton Street • Suite 3

Portland, ME 04101

207.772.2422 • malonecb.com