

Lake Jeanette Office Park Condo

3818 North Elm Street, Suite C (Unit 502) | Greensboro, NC 27455



- ◆ Available For Sale
- ◆ 1,344 SF *(Per Guilford County Records)*
- ◆ Several Offices with Windows
- ◆ Small Conference Area
- ◆ Break Room with Sink
- ◆ Front Door Parking
- ◆ Call For More Details

A professional office condo conveniently located in the Lake Jeanette Office Park right off the I-840 North Elm exit.

This unit is located next to Carolina Smiles Dentistry and other occupants in the Office Park include financial, insurance, medical, and general companies, etc.

It is located minutes from The Village at Elm mixed use retail development which includes retailers such as Harris Teeter, Epic Chophouse, and Chase Bank.



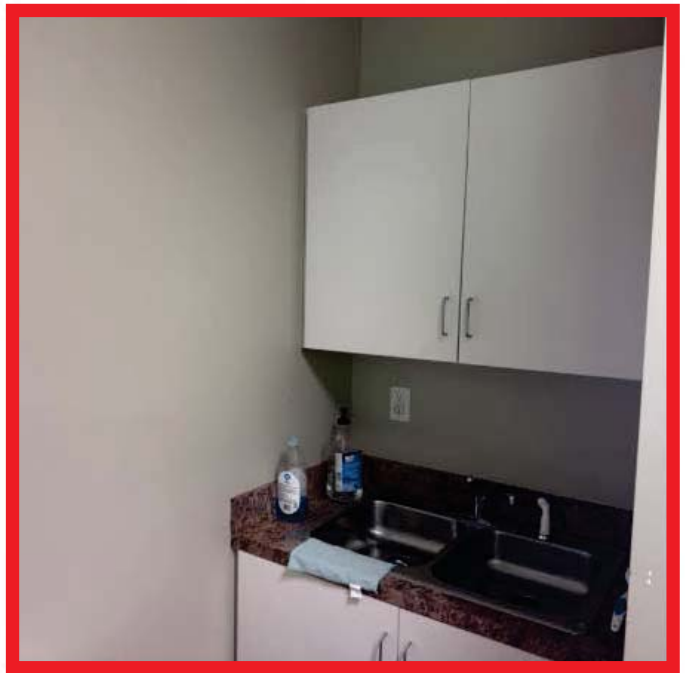
JJ Joubran, CCIM

(336) 270-9775

JJ@JoubranCommercial.com

Lake Jeanette Office Park Condo

3818 North Elm Street, Suite C (Unit 502) | Greensboro, NC 27455



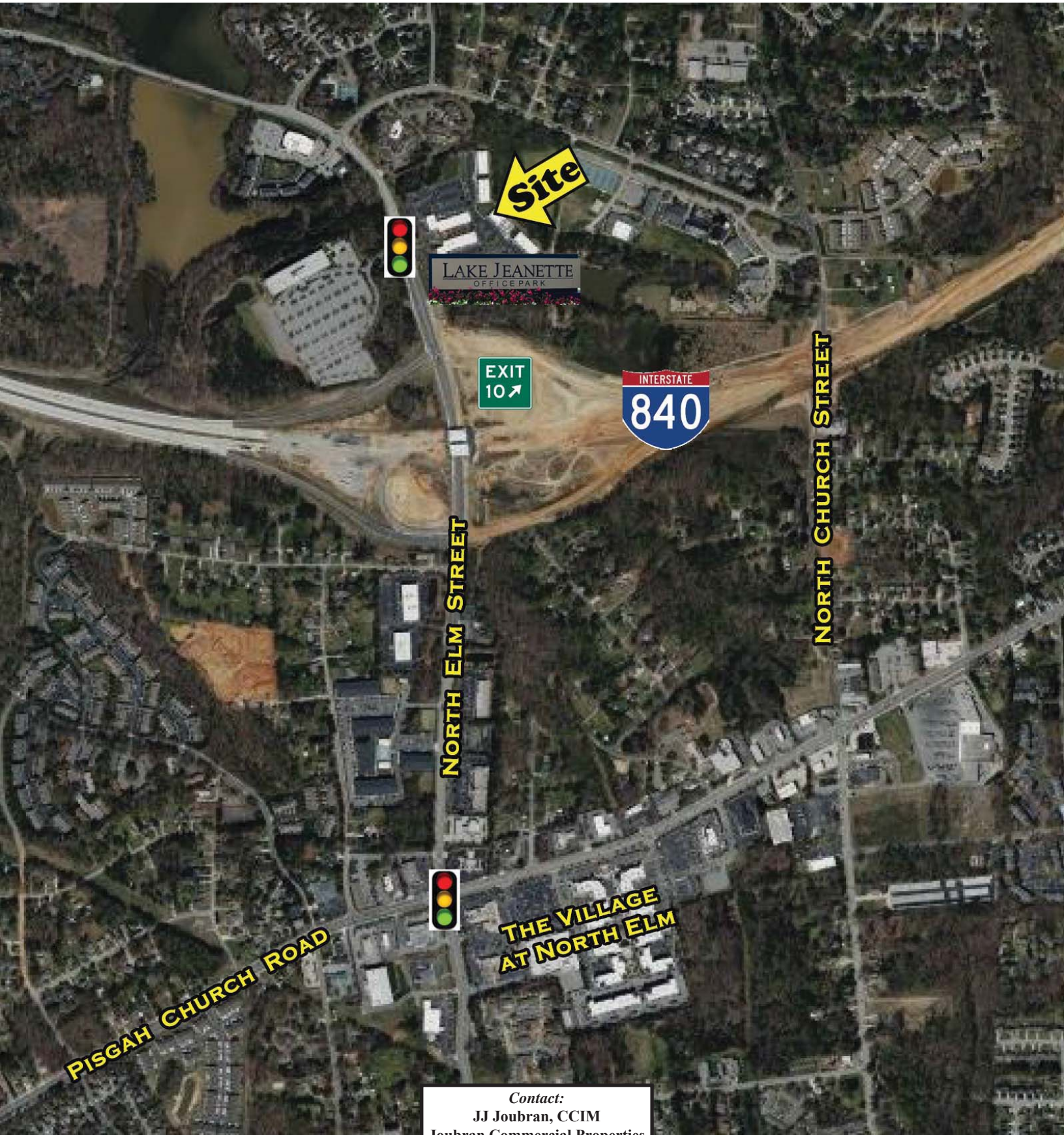
JJ Joubran, CCIM

(336) 270-9775

JJ@JoubranCommercial.com



3818 N. Elm Street Aerial Overview



Contact:
JJ Joubran, CCIM
Joubran Commercial Properties
(336) 270-9775
JJ@JoubranCommercial.com
www.JoubranCommercial.com