

# For Lease

# Ocoee Medical Building

3872 Old Winter Garden Road | Gotha, FL 34734



3,000± sf - 14,000± sf available

**AVISON  
YOUNG**

**Sean DuPree, CCIM**  
Senior Vice President  
407.440.6662  
[sean.dupree@avisonyoung.com](mailto:sean.dupree@avisonyoung.com)

**Emily Zinaich**  
Senior Vice President  
407.440.6641  
[emily.zinaich@avisonyoung.com](mailto:emily.zinaich@avisonyoung.com)



## Introduction

Adjacent to **Orlando Health - Health Central Hospital** and recently built in 2025, Ocoee Medical Building offers spaces from 3,000± SF to 14,000± SF providing Tenant's the opportunity to design their own layout from shell condition. With an excellent location near Ocoee and Windermere, the property is easily accessible to major thoroughfares such as S.R. 408, S.R. 429, the Florida Turnpike, and Highway 50.

### PROPERTY HIGHLIGHTS

**EASY ACCESS TO S.R. 408, S.R. 429,  
AND HIGHWAY 50**

**FRONTAGE ON OLD WINTER  
GARDEN ROAD**

**ADJACENT TO ORLANDO HEALTH -  
HEALTH CENTRAL HOSPITAL**

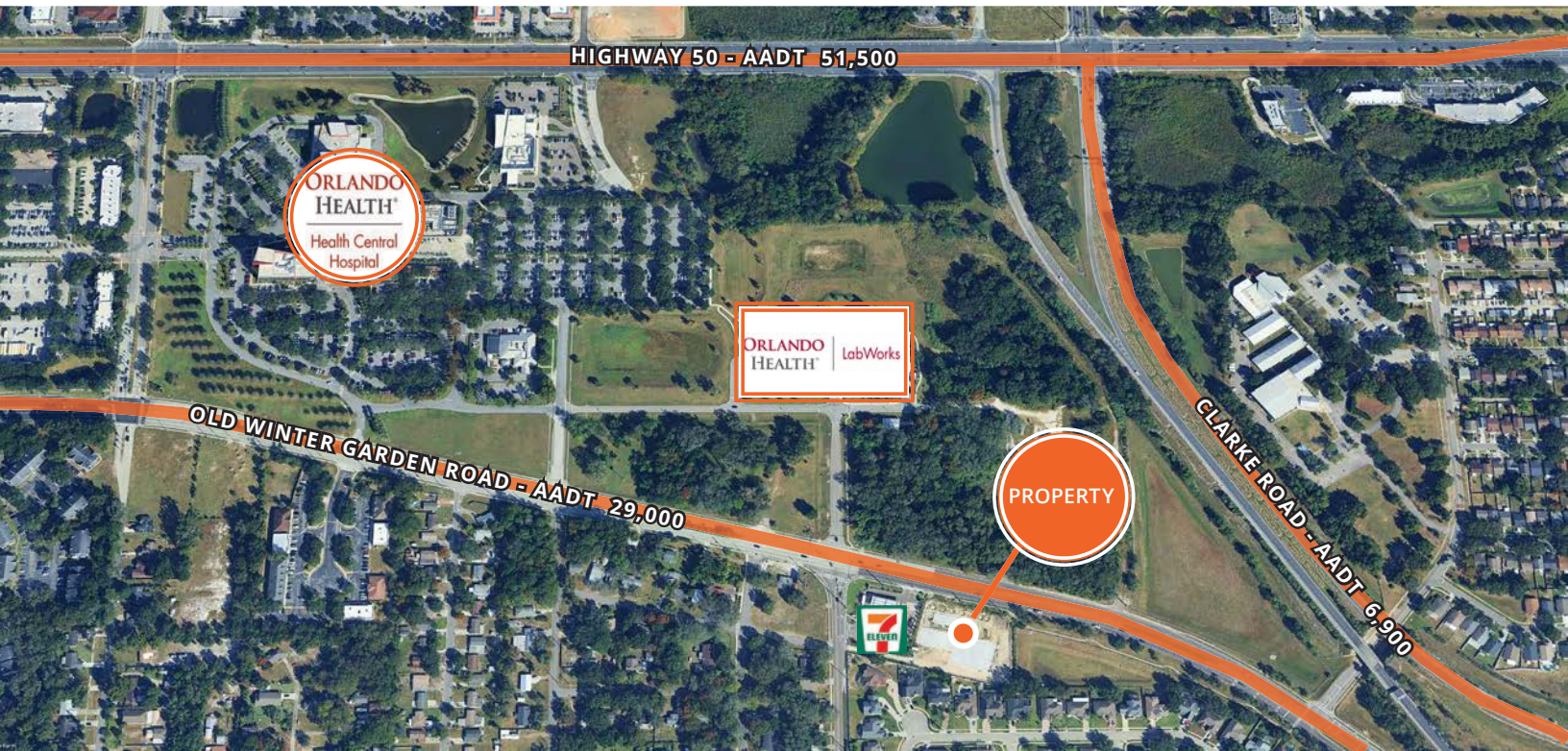
**SUSTAINABILITY AND WELLNESS  
CERTIFICATIONS**

**BUILDING SIGNAGE**

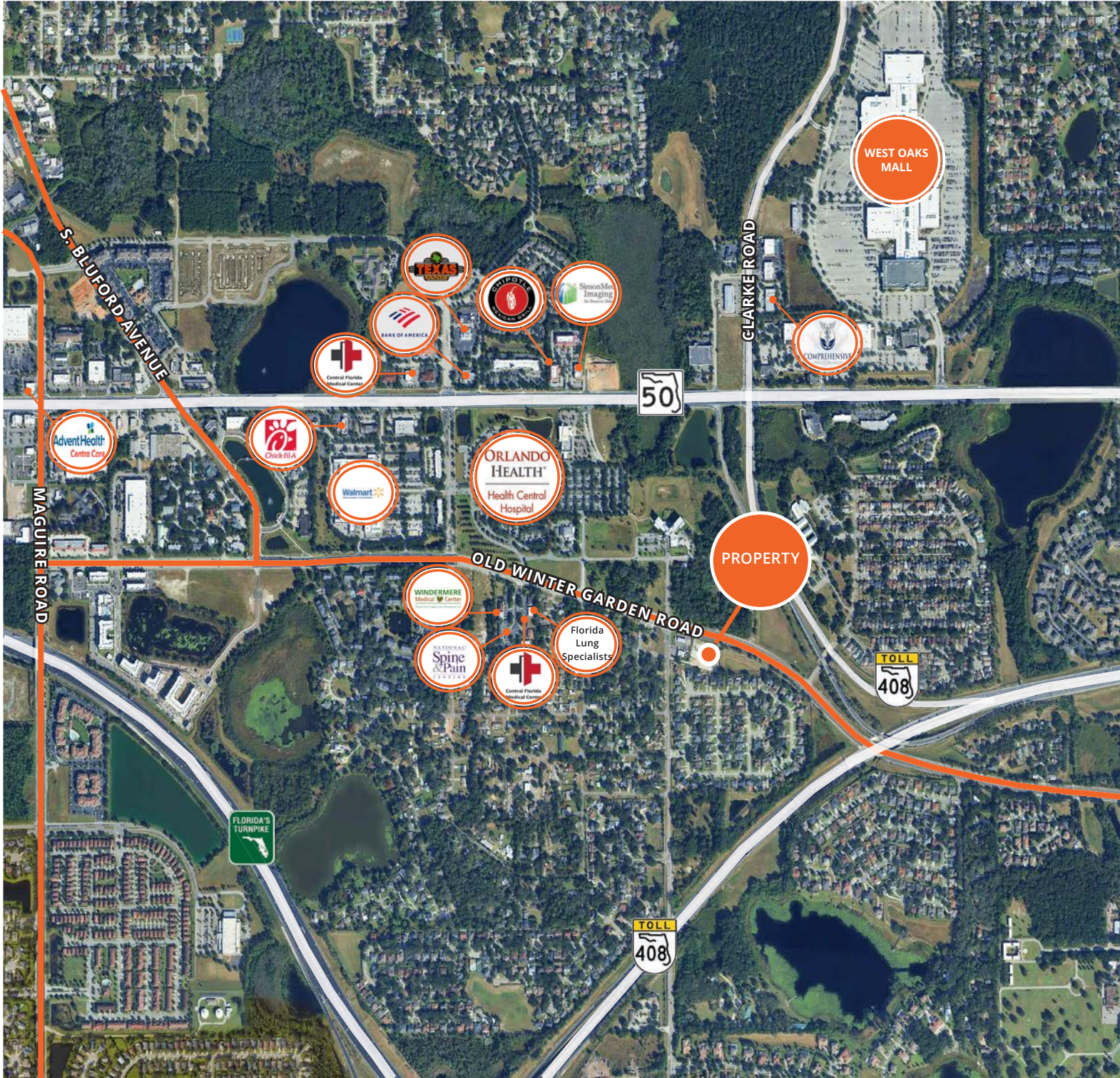
**5/1,000 SF PARKING RATIO**

**NEAR OCOEE, WINTER GARDEN,  
WINDERMERE COMMUNITIES**

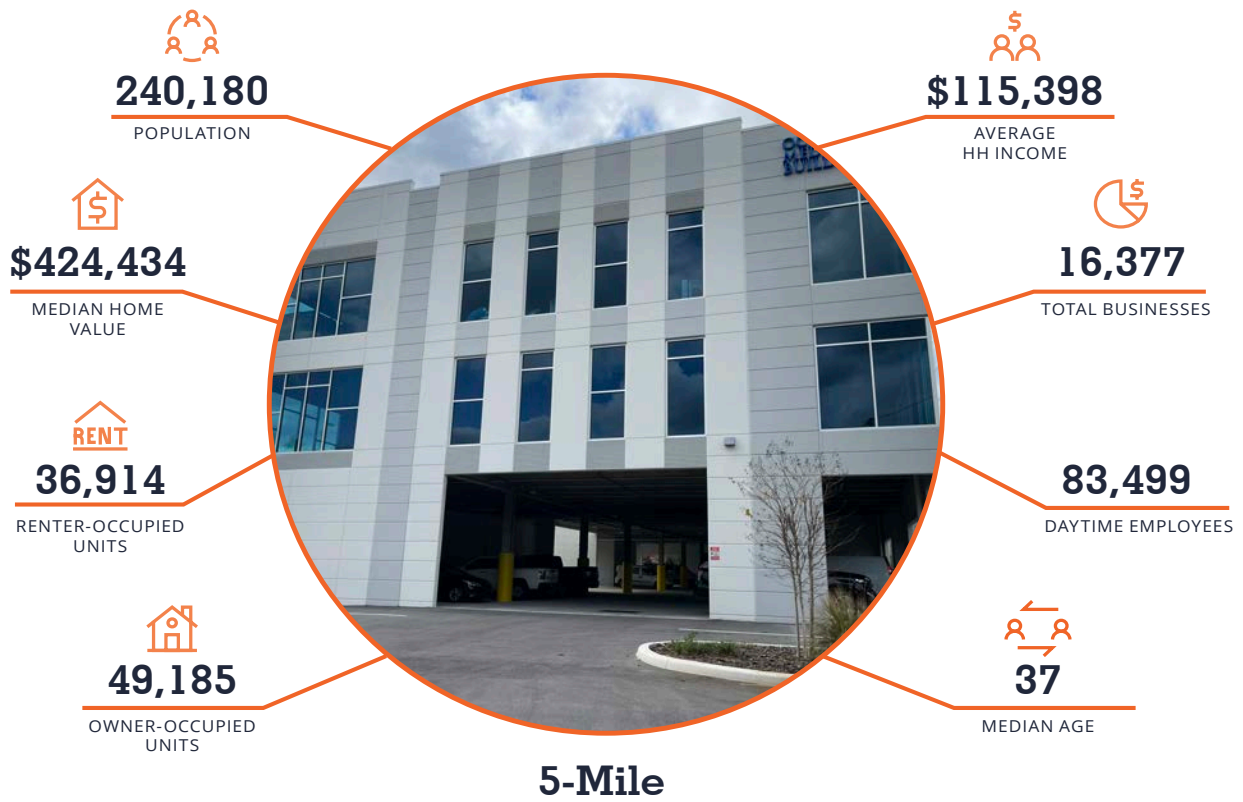
**BUILDING ALSO AVAILABLE  
FOR SALE**

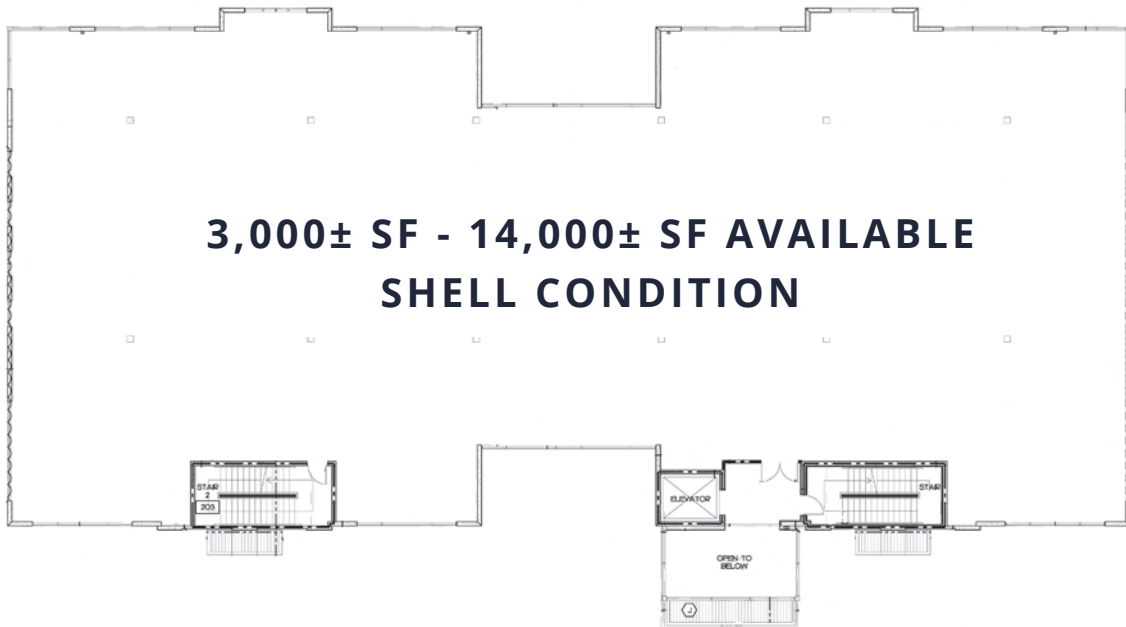


# Location Map

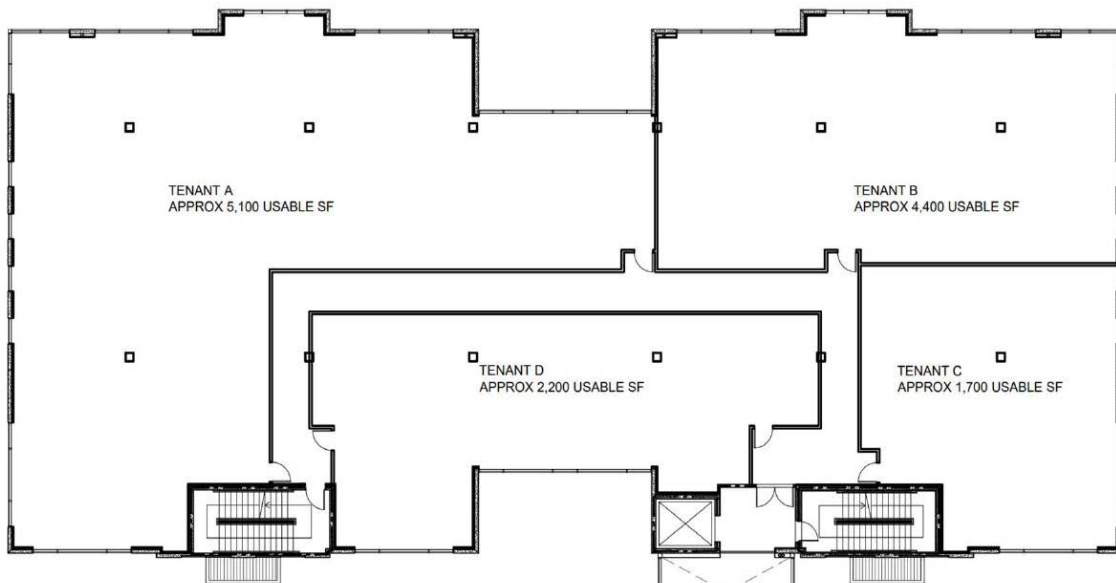


# Demographics





**CURRENT FLOOR LAYOUT**



**SAMPLE FLOOR LAYOUT  
CAN BE CUSTOMIZED**

