

# FOR LEASE

## OFFICE / SHOWROOM / WAREHOUSE

5610 - 5650 DISTRICT BOULEVARD, BAKERSFIELD, CA



**WESLEY MCDONALD**  
SENIOR VICE PRESIDENT | PRINCIPAL  
CENTRAL CALIFORNIA  
INDUSTRIAL PROPERTIES TEAM  
LICENSE NUMBER 01511739  
DIR 661 631 3828  
[wesley.mcdonald@colliers.com](mailto:wesley.mcdonald@colliers.com)

**CAMERON MAHONEY**  
SENIOR VICE PRESIDENT | PRINCIPAL  
CENTRAL CALIFORNIA  
OFFICE PROPERTIES TEAM  
LICENSE NUMBER 01937802  
DIR 661 631 3814  
[cameron.mahoney@colliers.com](mailto:cameron.mahoney@colliers.com)

**COLLIERS INTERNATIONAL**  
10000 Stockdale Highway, Suite 102  
Bakersfield, CA 93311  
[www.colliers.com/bakersfield](http://www.colliers.com/bakersfield)





# FOR LEASE

## OFFICE / SHOWROOM / WAREHOUSE

### PROPERTY INFORMATION

5610 - 5650 DISTRICT BOULEVARD, BAKERSFIELD, CA

Stockdale Business Center is located at 5610-5650 District Boulevard, which is located in the Stockdale Industrial Park, Southwest Bakersfield, conveniently just minutes west of Highway 99 with on/off ramps on White Lane to the north and Panama Lane to the south.

#### AVAILABLE

5630 - Suite 105:	1,428 SF	\$1,000.00/Mo. Ind. Gross
5640 - Suite 101:	820 SF	\$700.00/Mo. Ind. Gross
5640 - Suite 114:	820 SF	\$700.00/Mo. Ind. Gross
5640 - Suite 118:	1,068 SF	\$775.00/Mo. Ind. Gross
5640 - Suite 123:	1,068 SF	\$775.00/Mo. Ind. Gross
5650 - Suite 127:	816 SF	\$695.00/Mo. Ind. Gross

See building and suites breakdown on following pages.....

#### HIGHLIGHTS

- An approximately 133,192 SF industrial/office project
- Consisting of five (5) office/warehouse buildings
- Zoned M-2, City of Bakersfield
- APN #'s 384-341-03 & 04
- Located in the Stockdale Industrial Park
- 10' x 10' ground level roll-up doors in most suites
- Clear Height: 12' - 14'
- Professional on-site property management
- Separate utilities
- Concrete tilt-up construction
- Buildings color coded per address
- Power: 125 Amps, 120/240 volts, 3 Phase/4 Wire

#### RECENT IMPROVEMENTS

Newly installed HVAC systems, buildings have been painted and parking lot has been restriped and paved.



COLLIERS INTERNATIONAL  
10000 Stockdale Highway, Suite 102  
Bakersfield, CA 93311  
[www.colliers.com/bakersfield](http://www.colliers.com/bakersfield)





# FOR LEASE OFFICE / SHOWROOM / WAREHOUSE SITE PLAN

5610 - 5650 DISTRICT BOULEVARD, BAKERSFIELD, CA



Stockdale BUSINESS CENTER			
101 PAC Products, LLC	106	116	123
102	109	119	124
103	110	120	125
104	111	121	126
105	112	122	127
106 Renaissance Office	113	123	128
107 Golden Empire Wash Products	114	124	
5650			
5630			
101 G&B Security Solutions (G&B) Inc.	117	127	
102 Stockdale Business Center	118	128	
103 Chasman Building Services	119	129	
104	120	130	
105 C&H Impreg, Inc.	121	131	
106 Adam Inc.	122	132	
107	123	133	
108	124	134	
109	125	135	
110 South Valley Electric	126	136	
111	127	137	
112	128	138	
113	129	139	
114 Kern Technology Solutions, Inc.	130	140	
115	131	141	
116	132	142	
5640			
101 One Spark Energy	117	127	
102	118	128	
103	119	129	
104	120	130	
105	121	131	
106	122	132	
107	123	133	
108	124	134	
109	125	135	
110	126	136	
111	127	137	
112	128	138	
113	129	139	
114	130	140	
115	131	141	
116	132	142	
5620			
101	111	121	
102	112	122	
103	113	123	
104	114	124	
105	115	125	
106	116	126	
107	117	127	
108	118	128	
109	119	129	
110	120	130	
111	121	131	
112	122	132	
113	123	133	
114	124	134	
115	125	135	
116	126	136	
117	127	137	
118	128	138	
119	129	139	
120	130	140	
121	131	141	
122	132	142	
123	133	143	
124	134	144	
125	135	145	
126	136	146	
127	137	147	
128	138	148	
129	139	149	
130	140	150	

See building and suites breakdown on the following pages.....

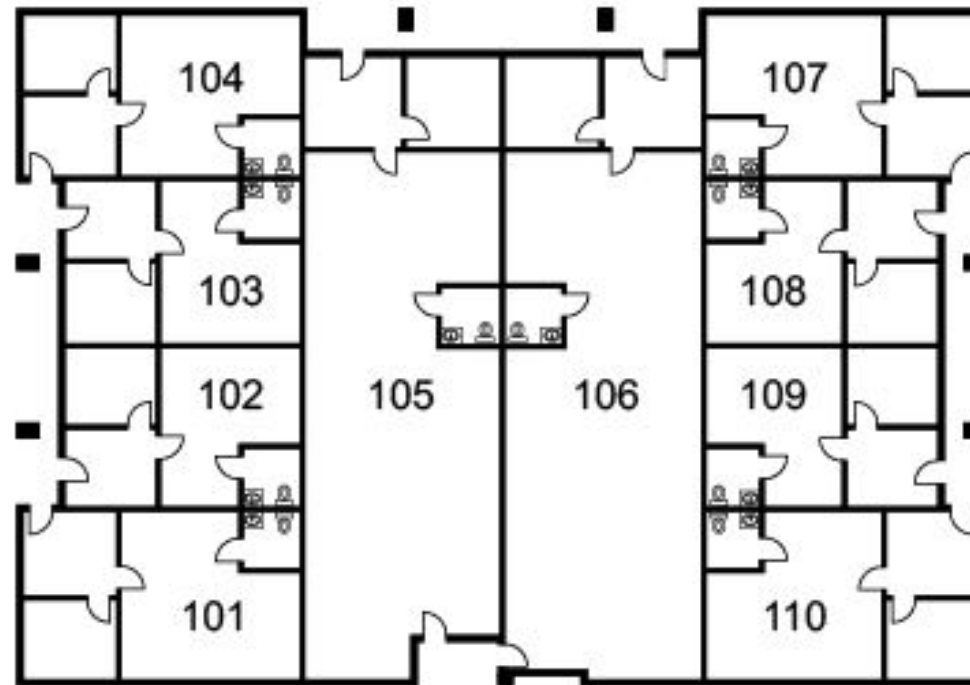
COLLIERS INTERNATIONAL  
10000 Stockdale Highway, Suite 102  
Bakersfield, CA 93311  
[www.colliers.com/bakersfield](http://www.colliers.com/bakersfield)





# FOR LEASE OFFICE / SHOWROOM / WAREHOUSE BUILDING 1 - 5610 DISTRICT BOULEVARD FLOOR PLAN

5610 - 5650 DISTRICT BOULEVARD, BAKERSFIELD, CA



**AVAILABLE:**

100% Leased!!





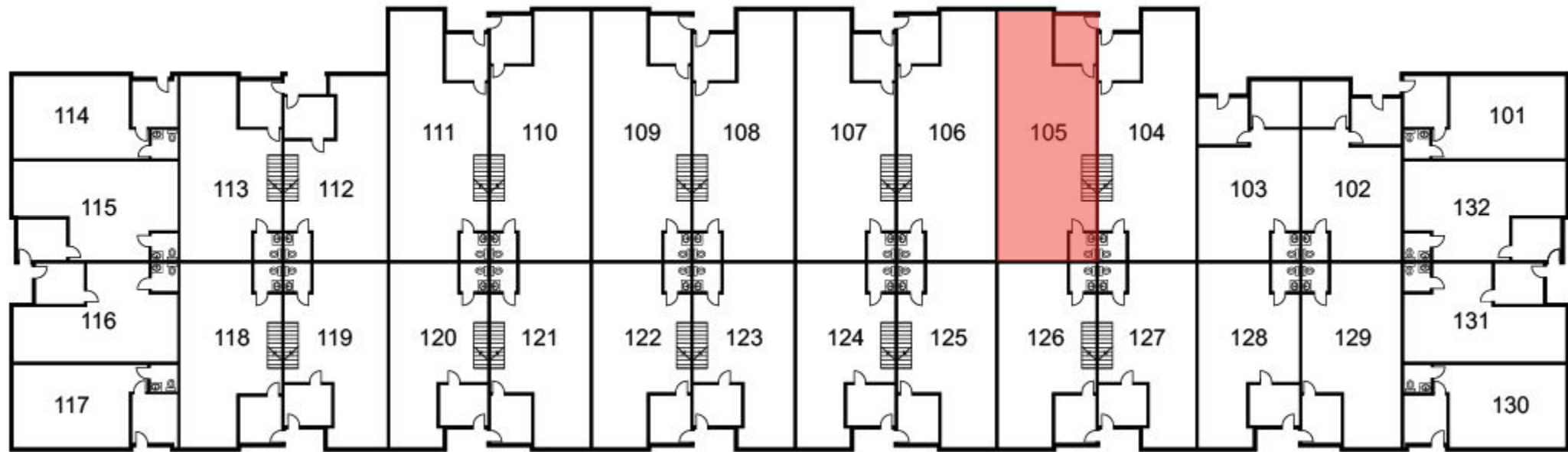
# FOR LEASE

## OFFICE / SHOWROOM / WAREHOUSE

### BUILDING 3 - 5630 DISTRICT BOULEVARD

#### FLOOR PLAN

5610 - 5650 DISTRICT BOULEVARD, BAKERSFIELD, CA



## AVAILABLE:

Suite 105: 1,428 SF \$1,000/Mo. Ind. Gross

\* Includes a 336 SF loft.  
(Not included in total SF)





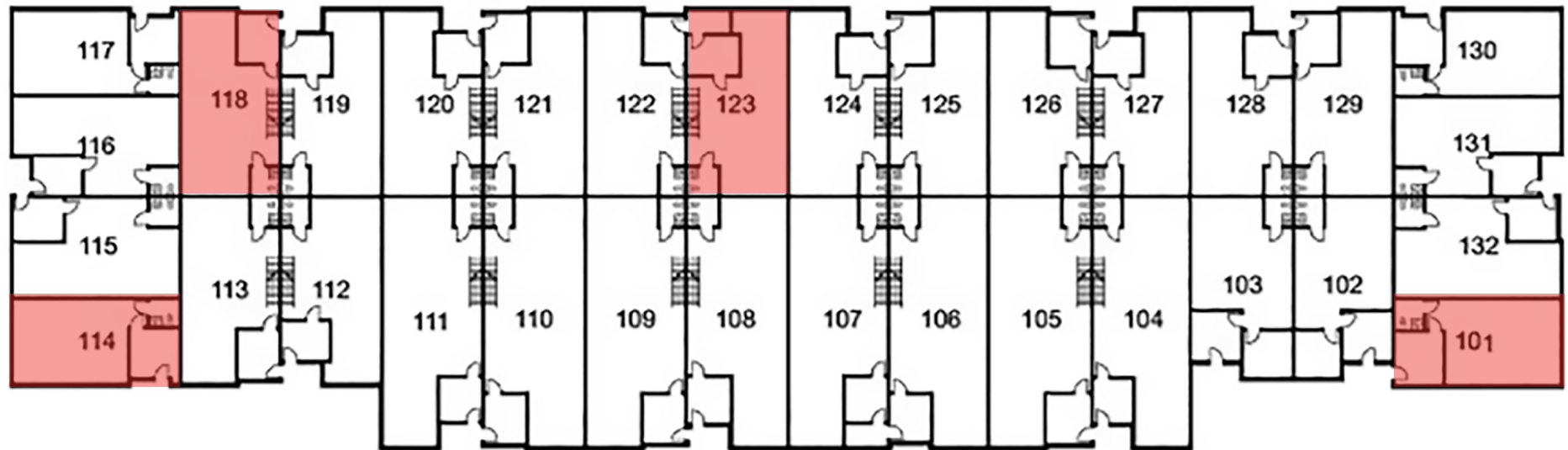
# FOR LEASE

## OFFICE / SHOWROOM / WAREHOUSE

### BUILDING 4 - 5640 DISTRICT BOULEVARD

#### FLOOR PLAN

5610 - 5650 DISTRICT BOULEVARD, BAKERSFIELD, CA



## AVAILABLE:

Suite 101:	820 SF	\$700/Mo. Ind. Gross
Suite 114:	820 SF	\$700/Mo. Ind. Gross
Suite 118:	1,068 SF	\$775/Mo. Ind. Gross
Suite 123:	1,068 SF	\$775/Mo. Ind. Gross

\* Includes a 336 SF loft.  
(Not included in total SF)





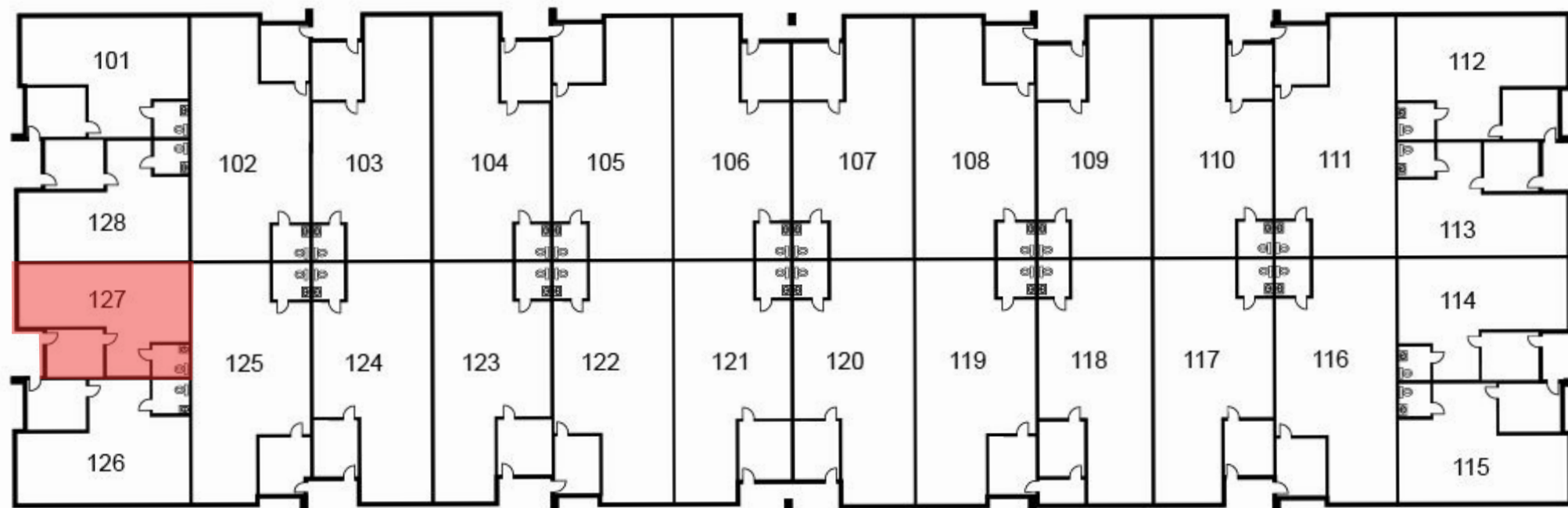
# FOR LEASE

## OFFICE / SHOWROOM / WAREHOUSE

### BUILDING 5 - 5650 DISTRICT BOULEVARD

### FLOOR PLAN

5610 - 5650 DISTRICT BOULEVARD, BAKERSFIELD, CA



## AVAILABLE:

Suite 127: 816 SF \$695/Mo. Ind. Gross





# FOR LEASE OFFICE / SHOWROOM / WAREHOUSE AERIAL

5610 - 5650 DISTRICT BOULEVARD, BAKERSFIELD, CA





5610 - 5650 DISTRICT BOULEVARD, BAKERSFIELD, CA

COLLIERS INTERNATIONAL  
10000 Stockdale Highway, Suite 102  
Bakersfield, CA 93311  
[www.colliers.com/bakersfield](http://www.colliers.com/bakersfield)



This document has been prepared by Colliers International for advertising and general information only. Colliers International makes no guarantees, representations or warranties of any kind, expressed or implied, regarding the information including, but not limited to, warranties of content, accuracy and reliability. Any interested party should undertake their own inquiries as to the accuracy of the information. Colliers International excludes unequivocally all inferred or implied terms, conditions and warranties arising out of this document and excludes all liability for loss and damages arising there from. This publication is the copyrighted property of Colliers International and/or its licensor(s). ©2019. All rights reserved. 01-24-20