

# 1800 20TH STREET

FOR LEASE | MOVE-IN READY CREATIVE OFFICE SUITES

**TCP**  
**TOUCHSTONE**  
COMMERCIAL PARTNERS



[WWW.TCPRE.COM](http://WWW.TCPRE.COM)

**ZACH HAUPERT** [zhaupert@tcpre.com](mailto:zhaupert@tcpre.com)  
D 415.539.1121 | C 415.812.1219

**MICHAEL SANBERG** [msanberg@tcpre.com](mailto:msanberg@tcpre.com)  
D 415.539.1103 | C 415.697.6088



# 1800 20TH STREET

## PROPERTY SUMMARY

### ADDRESS

1800 20th Street, San Francisco, CA 94107

### AVAILABLE SUITE SPACE

675A Carolina St	+/- 334 Square Feet
637 Carolina St	+/- 621 Square Feet
548 Wisconsin St	+/- 422 Square Feet
1822 20th St	+/- 568 Square Feet

### RENTAL RATE

675A Carolina St	\$750 / Month, I.G.
637 Carolina St	\$2,800 / Month, I.G.
548 Wisconsin St	\$1,600 / Month, I.G.
1822 20th St	\$2,800 / Month, I.G.

### AVAILABLE

Immediately

## BUILDING ATTRIBUTES

- + Move-In Ready Creative Office Suites in Potrero Hill
- + Exclusive Restroom w/ Shower
- + Kitchenette
- + Open Floor Plans
- + Sweeping City and Bay Views
- + Access to Pool, Tennis Courts, Gym, Game Room, & On-Site Spa Amenities



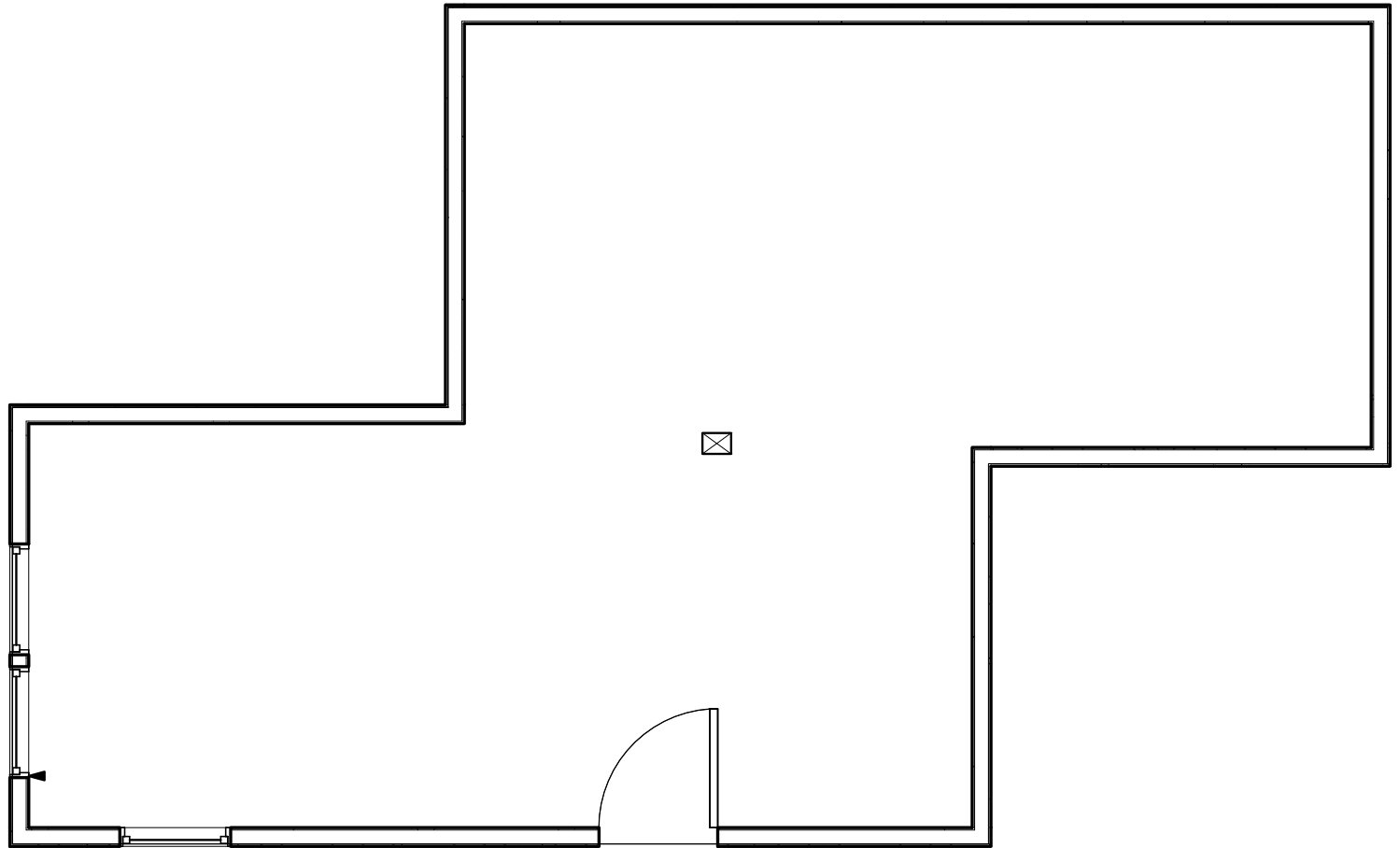


# 1800 20TH STREET



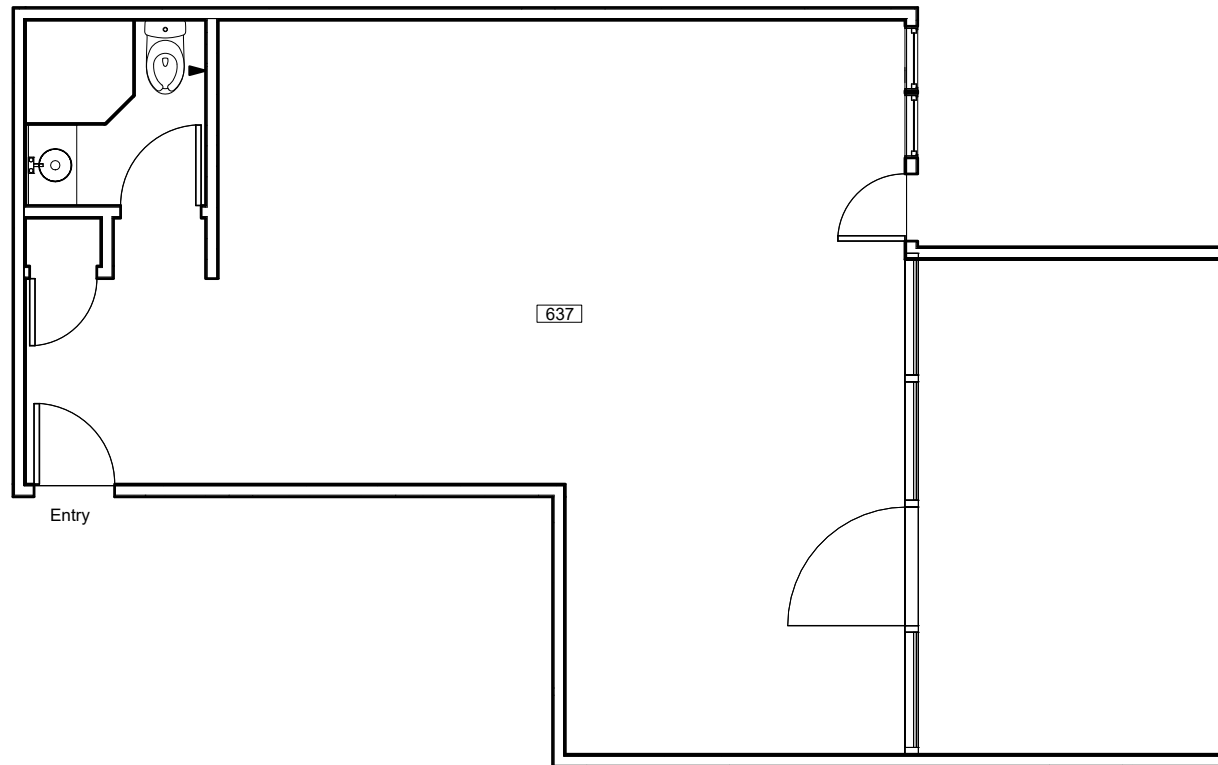
**1800** 20TH  
STREET

**675A CAROLINA ST**  
*+/- 334 Square Feet*



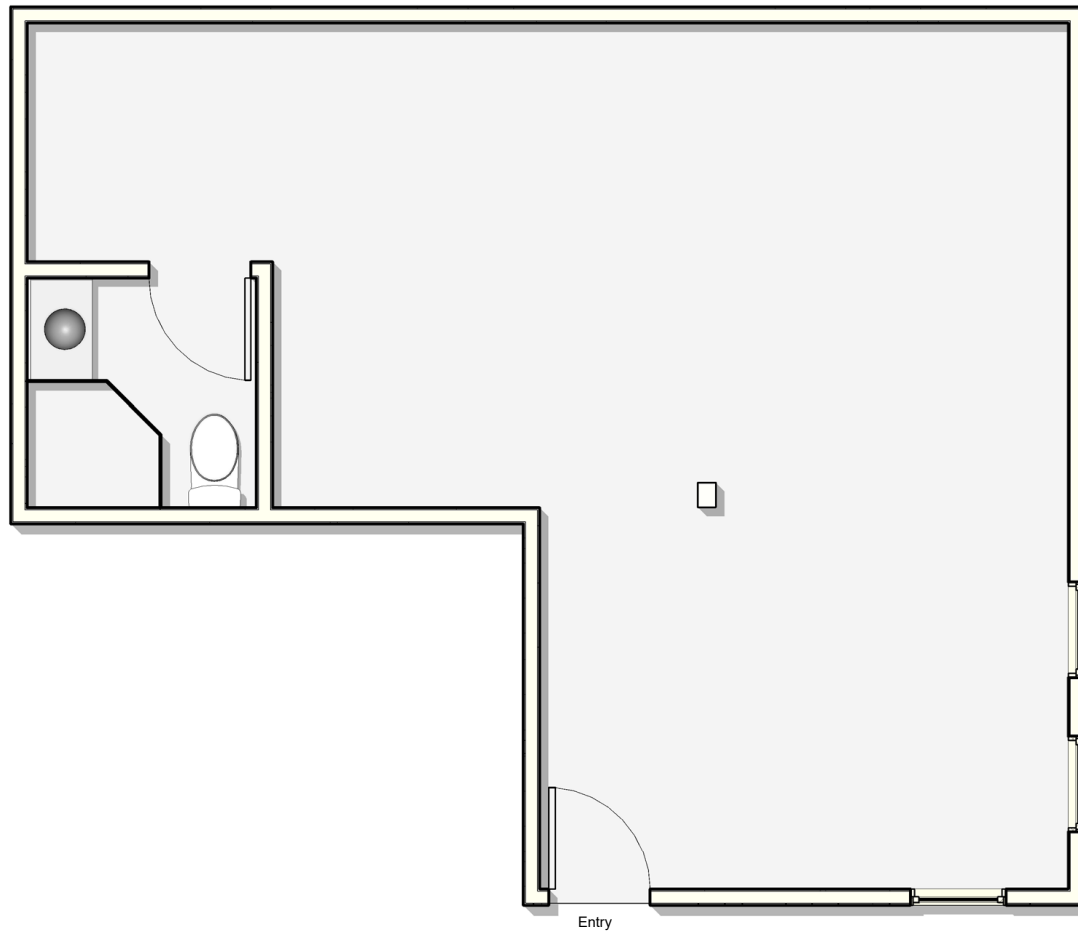
**1800** 20TH  
STREET

**637 CAROLINA ST**  
+/- 621 Square Feet



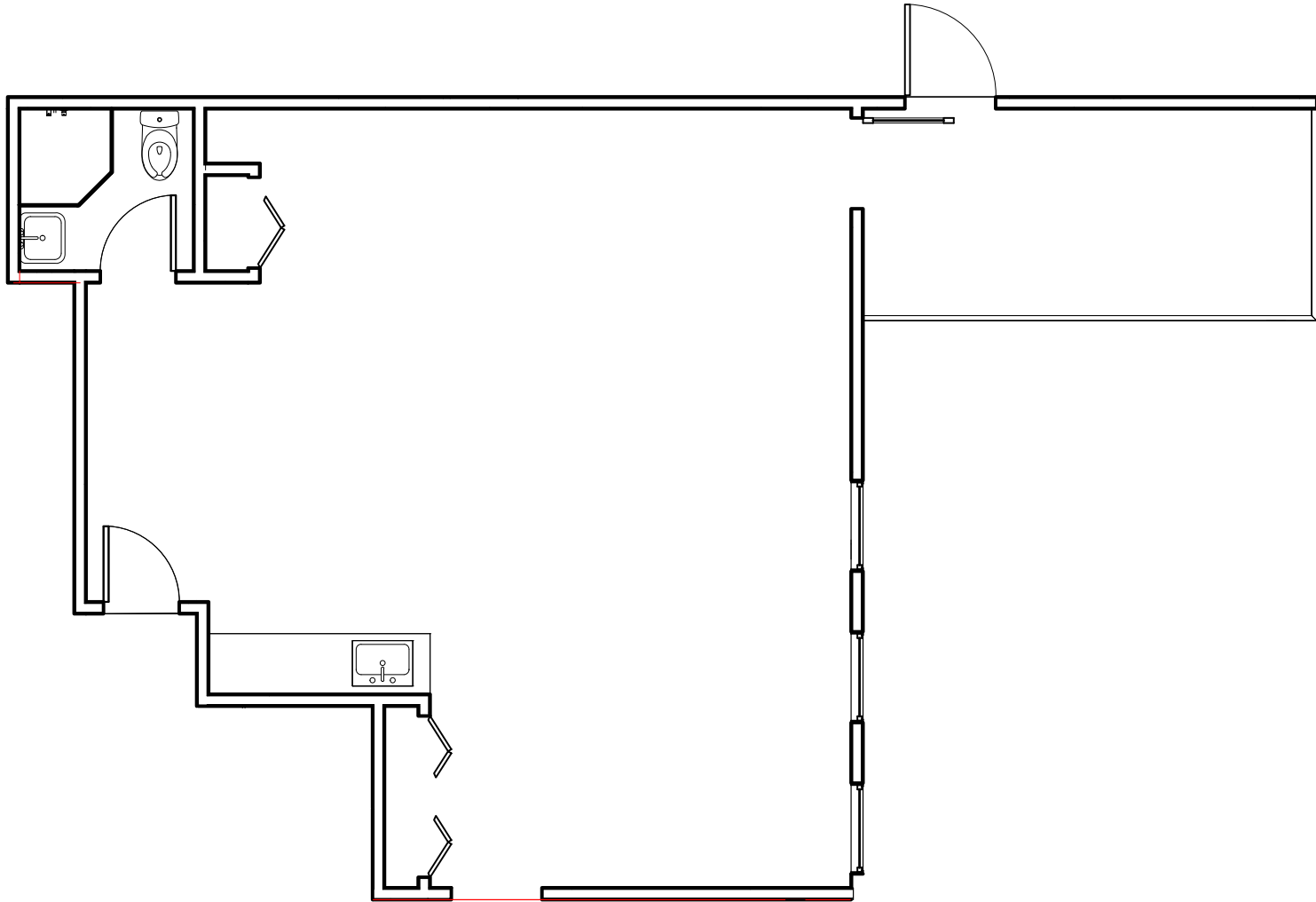
**1800** 20TH  
STREET

**548 WISCONSIN ST**  
+/- 422 Square Feet



**1800** 20TH  
STREET

**1822 20TH ST**  
*+/- 568 Square Feet*





# 1800 20TH STREET

## LOCATION OVERVIEW

Desirable Potrero Hill location, walkable to nearby amenities and to surrounding neighborhoods.



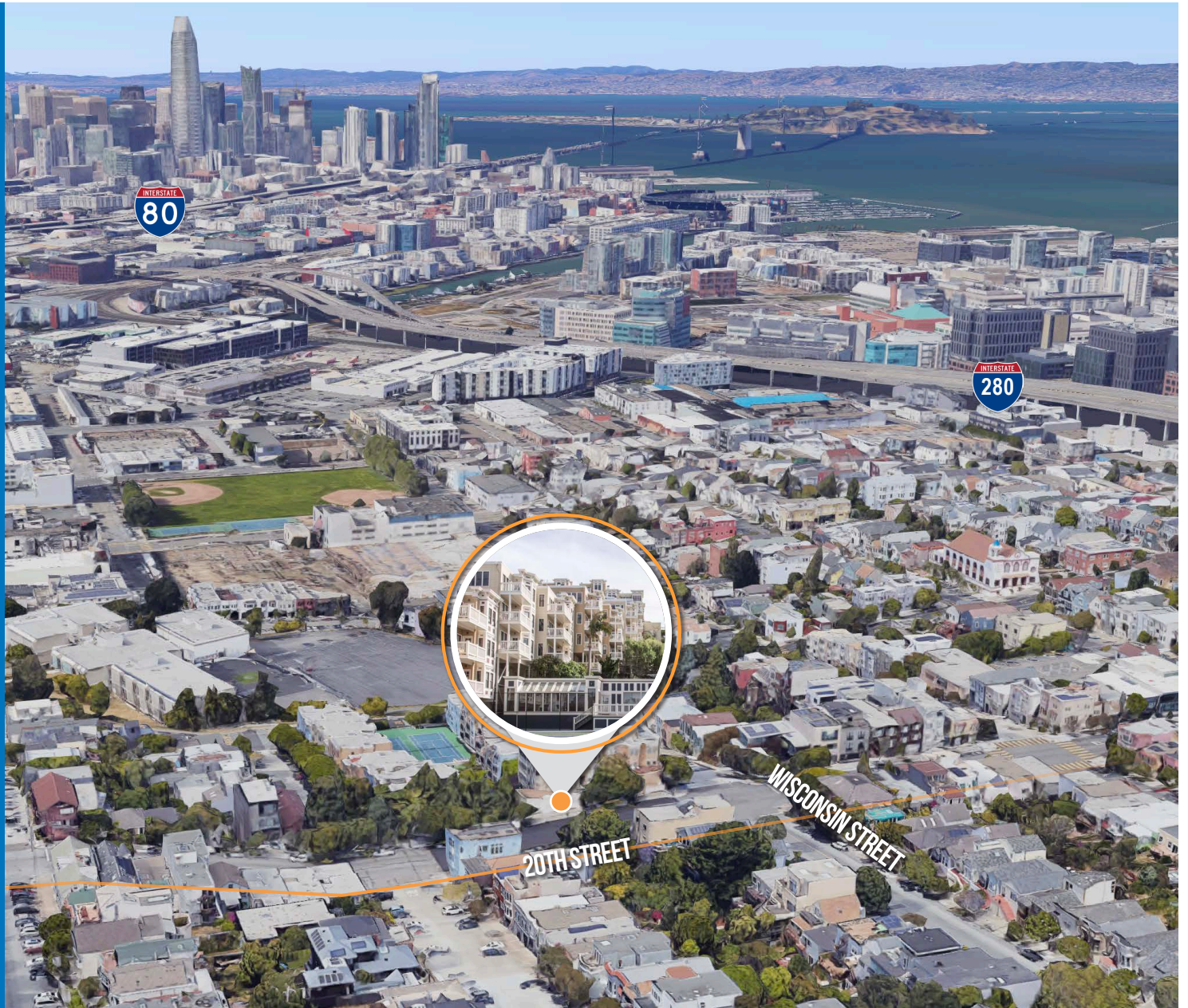
**10 MIN** to 22nd St. Caltrain  
**12 MIN** to 3rd St. Muni  
**22 MIN** to Chase Center



**06 MIN** to SOMA  
**08 MIN** to Mission District  
**14 MIN** to Financial District



**04 MIN** to 101 On-Ramp  
**05 MIN** to 280 On-Ramp  
**06 MIN** to 80 On-Ramp

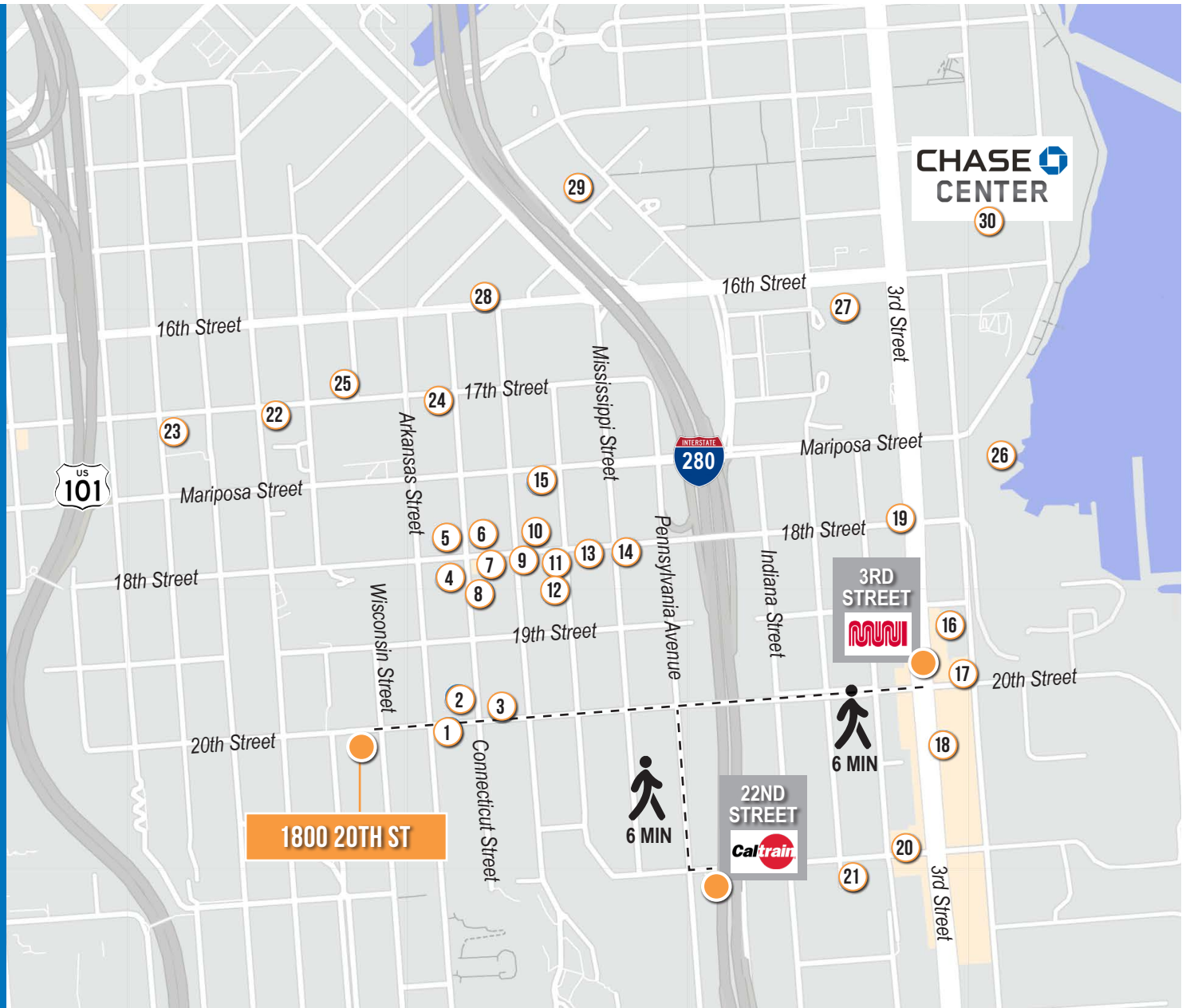




# 1800 20TH STREET

## NEARBY AMENITIES

- 1.....Thinkers Cafe
- 2.....SF Public Library Potrero
- 3.....The Good Life Grocery
- 4.....Goat Hill Pizza
- 5.....Sunflower Restaurant
- 6.....Cracked & Battered
- 7.....Mochica
- 8.....Papito
- 9.....Parker Potrero
- 10.....Umi
- 11.....Hazel's Kitchen
- 12.....Farley's Coffeehouse
- 13.....Plow
- 14.....Ganim's
- 15.....Linea Caffe
- 16.....Olfactory Brewing & Blending
- 17.....Third Rail
- 18.....Neighbor Bakehouse
- 19.....Moshi Moshi
- 20.....Just For You Cafe
- 21.....Piccino
- 22.....Philz Coffee
- 23.....Whole Foods Market
- 24.....Connecticut Yankee
- 25.....Thee Parkside
- 26.....The Ramp Restaurant
- 27.....UCSF Medical Center
- 28.....Boba Guys Potrero
- 29.....Kaiser Permanente SF
- 30.....Chase Center





# 1800 20TH STREET



MOCHICA



THIRD RAIL



PLOW



MOSHI MOSHI



PICCINO





**1800** 20TH  
STREET



Corp. Lic. 01112906  
[www.tcpre.com](http://www.tcpre.com)

## ZACH HAUPERT

D 415.539.1121 C 415.812.1219  
[zhaupert@tcpre.com](mailto:zhaupert@tcpre.com) DRE # 01822907

## MICHAEL SANBERG

D 415.539.1103 C 415.697.6088  
[msanberg@tcpre.com](mailto:msanberg@tcpre.com) DRE # 01930041

This document has been prepared by Touchstone Commercial Partners for advertising and general information only. Touchstone Commercial Partners makes no guarantees, representations or warranties of any kind, expressed or implied, regarding the information including, but not limited to, warranties of content, accuracy and reliability. Any interested party should undertake their own inquiries as to the accuracy of the information. Touchstone Commercial Partners excludes unequivocally all inferred or implied terms, conditions and warranties arising out of this document and excludes all liability for loss and damages arising there from. This publication is the copyrighted property of Touchstone Commercial Partners and/or its licensor(s). ©2025. All rights reserved.