

FOR LEASE

LOGGERHEAD PLAZA

14255 U.S. HIGHWAY ONE, JUNO BEACH, FL 33408



PROPERTY DESCRIPTION

This highly visible retail and office space in the northwest corridor of U.S. Highway One and Donald Ross is directly across from Loggerhead Marineline Center and Loggerhead Park in Juno Beach.

PROPERTY HIGHLIGHTS

- Beautiful center facing U.S. Highway One in close proximity to Loggerhead Marina and Juno Beach Pier
- Well maintained center
- Retail, medical, or office space available

SPACES	LEASE RATE	SPACE SIZE
205-210	Negotiable	2,740 SF
14151	Negotiable	1,000 SF
14241	Negotiable	2,200 SF
14153	Negotiable	1,000 SF
14235	Negotiable	3,786 SF

DEMOGRAPHICS	1 MILE	3 MILE	5 MILE
Postal Count Population	3,922	31,647	107,603
Median Age	64.6	58.1	50.3
Average HH Income	\$145,254	\$155,723	\$135,674

BRYAN COHEN

561.471.0212

info@cohencommercial.com



FOR LEASE

LOGGERHEAD PLAZA

14255 U.S. HIGHWAY ONE, JUNO BEACH, FL 33408



BRYAN COHEN

561.471.0212

info@cohencommercial.com



FOR LEASE

LOGGERHEAD PLAZA

14255 U.S. HIGHWAY ONE, JUNO BEACH, FL 33408



BRYAN COHEN

561.471.0212

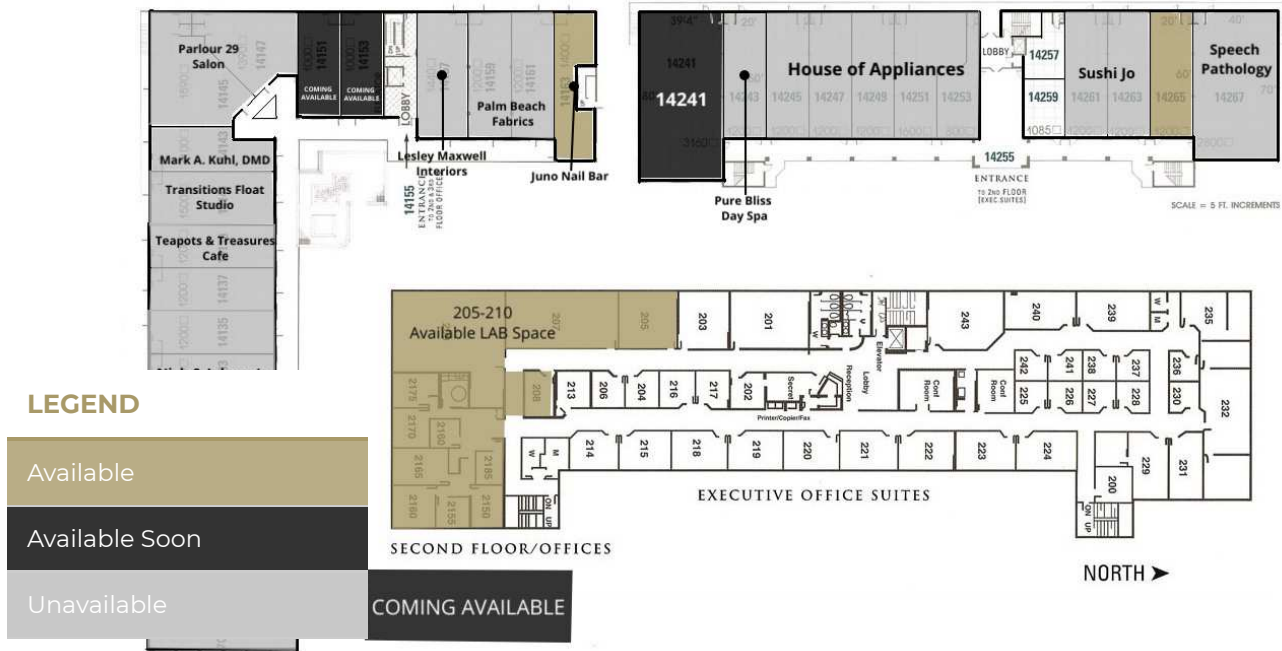
info@cohencommercial.com



FOR LEASE

LOGGERHEAD PLAZA

14255 U.S. HIGHWAY ONE, JUNO BEACH, FL 33408



LEASE INFORMATION

Lease Type:	NNN	Lease Term:	Negotiable
Total Space:	1,000 - 3,786 SF	Lease Rate:	Negotiable

AVAILABLE SPACES

SUITE	TENANT	SIZE	TYPE	RATE
205-210	Available	2,740 SF	NNN	Negotiable
14151	Available Soon	1,000 SF	NNN	Negotiable
14241	Available Soon	2,200 SF	NNN	Negotiable
14153	Available Soon	1,000 SF	NNN	Negotiable
14235	Available Soon	3,786 SF	NNN	Negotiable

BRYAN COHEN

561.471.0212
info@cohencommercial.com



FOR LEASE

LOGGERHEAD PLAZA

14255 U.S. HIGHWAY ONE, JUNO BEACH, FL 33408

TENANT NAME	UNIT NUMBER	UNIT SIZE (SF)
Aqua Grille	14121	4,200
Fitness Together	14127-14129	2,400
Nick & Johnny's	14131-14135	3,600
Teapots & Treasures Cafe	14137-14139	2,400
Transitions Float Studio	14141	1,500
Mark A. Kuhl, DMD	14143	1,100
Parlour 29 Salon	14145-14147	3,280
Mystic Lobster	14151	1,000
Mystic Yoga	14153	1,000
Lesley Maxwell Interiors	14157	1,440
Osteostrong	14159-14161	2,400
Juno Nail Bar	14163	1,400
COMING AVAILABLE	14241	2,200
Pure Bliss Day Spa	14243	2,375
House of Appliances	14245-14253	6,000
Sushi Jo	14261-14263	2,400
Speech Pathology	14265	1,200
Speech Pathology	14267	2,800
AVAILABLE	205-210	2,740

BRYAN COHEN

561.471.0212

info@cohencommercial.com



FOR LEASE

LOGGERHEAD PLAZA

14255 U.S. HIGHWAY ONE, JUNO BEACH, FL 33408

TENANT NAME	UNIT NUMBER	UNIT SIZE (SF)
AVAILABLE LAB SPACE	302	1,320
COMING AVAILABLE	14235	3,786
TOTALS/AVERAGES		50,541

BRYAN COHEN

561.471.0212

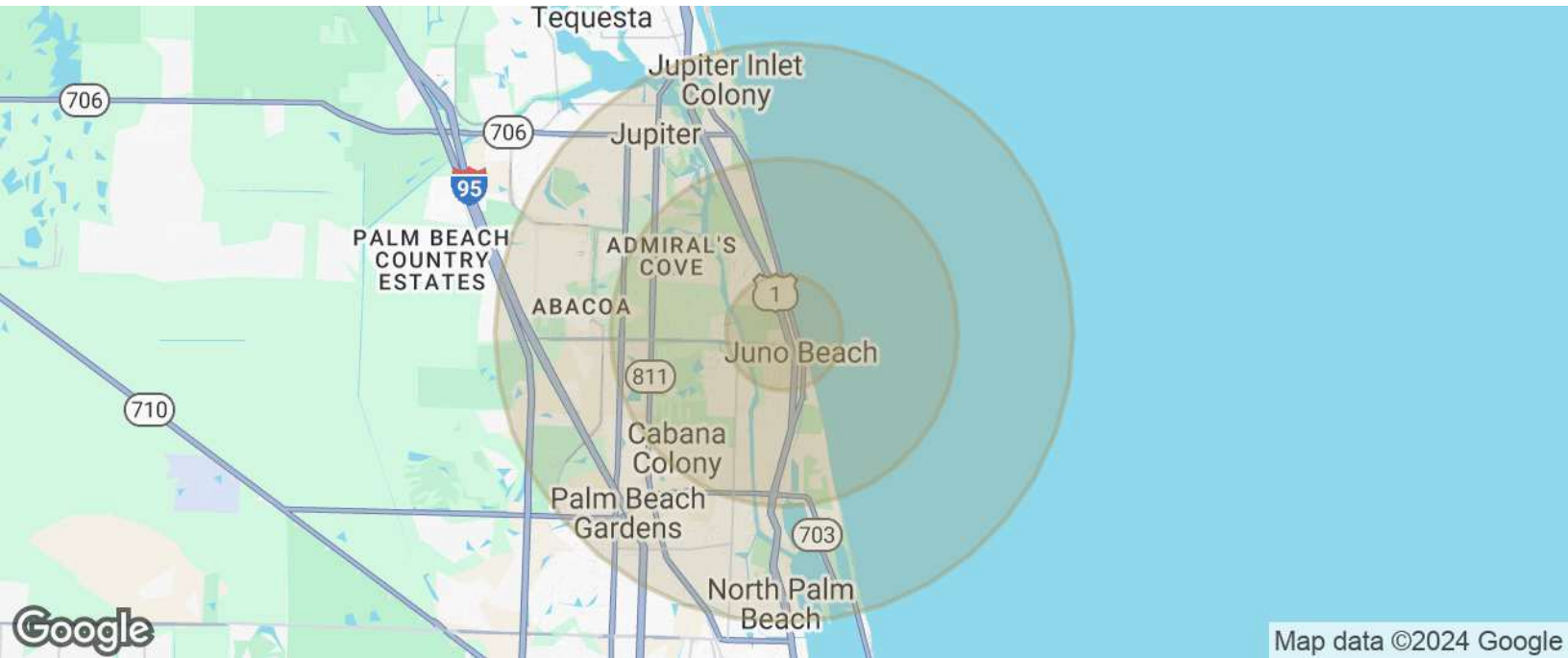
info@cohencommercial.com



FOR LEASE

LOGGERHEAD PLAZA

14255 U.S. HIGHWAY ONE, JUNO BEACH, FL 33408



POPULATION	1 MILE	3 MILES	5 MILES
Total Population		30,165	101,286
Average Age	61.0	57.1	49.5
HOUSEHOLDS & INCOME	1 MILE	3 MILES	5 MILES
Total Households	1,827	30,165	101,286
# of Persons per HH	1.8	2.0	2.2
Average HH Income	\$90,217	\$57	\$49
Average House Value	\$367,830	\$490,841	\$463,504

2020 American Community Survey (ACS)

BRYAN COHEN

561.471.0212

info@cohencommercial.com

