



FOR SALE



21615 SW TUALATIN VALLEY HWY

Available Industrial Space
± 14,592 SF | Call For Pricing

21615 SW Tualatin Valley Hwy, Beaverton, OR

- Prime Beaverton location with excellent frontage along SW Tualatin Valley Hwy, offering strong visibility and easy access for industrial and commercial users
- Easy access to OR-217 with nearby connectivity to I-5, supporting efficient transportation and logistics
- Located within an established industrial and commercial corridor with strong surrounding infrastructure

DANIEL HELM, SIOR
Senior Vice President | Licensed in OR & WA
503-789-5750 | dhelm@capacitycommercial.com

DANIEL SAYLES
Senior Vice President | Licensed in OR & WA
503-542-4351 | dsayles@capacitycommercial.com

JAKOB NICHOLLS
Director | Licensed in OR & WA
704-840-5271 | jakob.nicholls@nmrk.com



PROPERTY SUMMARY

**FOR
SALE**



PROPERTY DETAILS

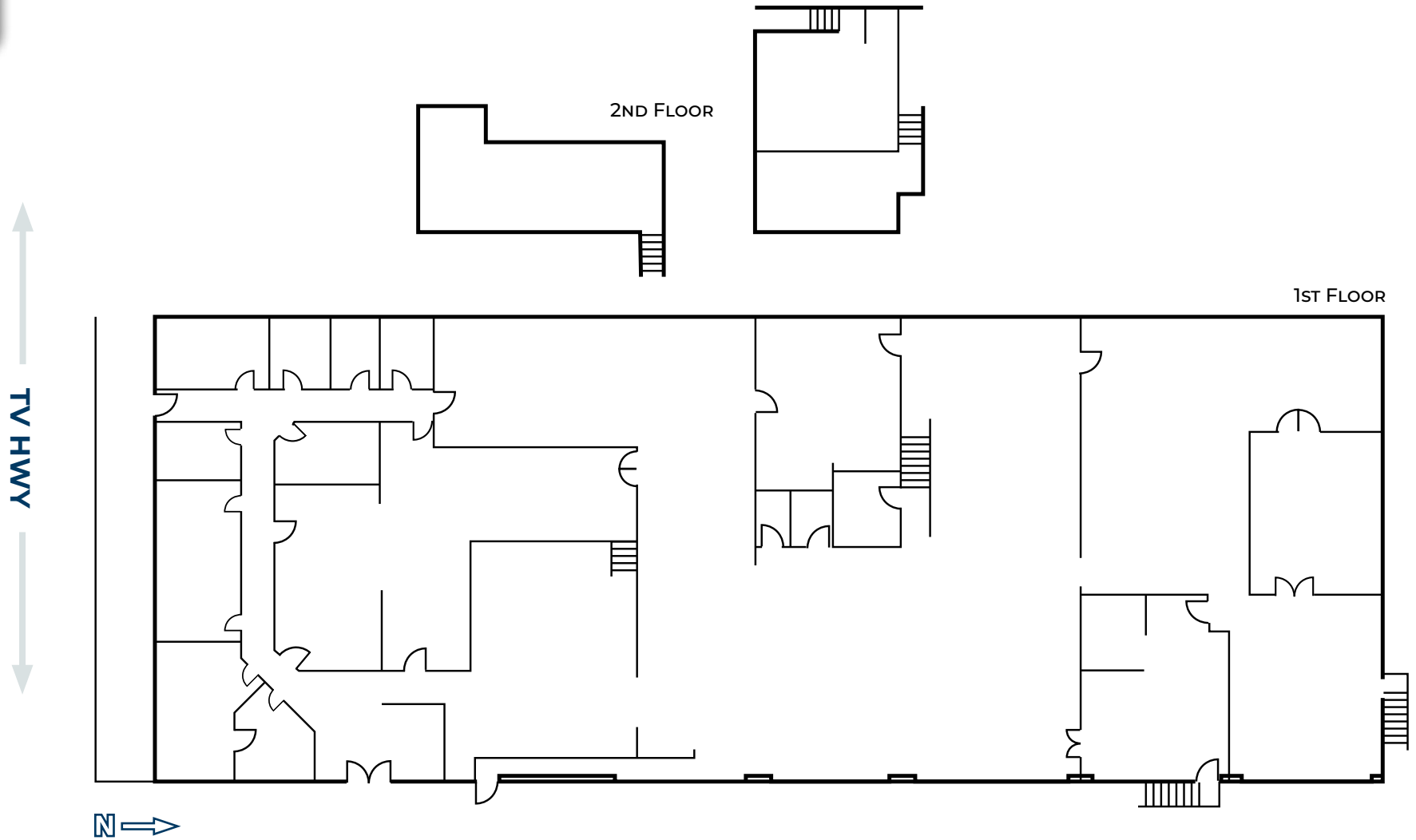
Address	21615 SW Tualatin Valley Hwy Beaverton, OR 97006
Available Space	± 14,592 SF Total
Office Space	± 5,000 SF
Lot Area	± 1.07 AC
Parcel ID	R347725 and R347734
Year Built	1977
Use Type	Industrial
Clear Height	16' - 18'
Dock Doors	2 Oversized
Grade Level Doors	2 Oversized (20' x 14')
Yard	Yes
Zoning	GC (Washington County)
Availability	Now
Sale Price	Call For Pricing





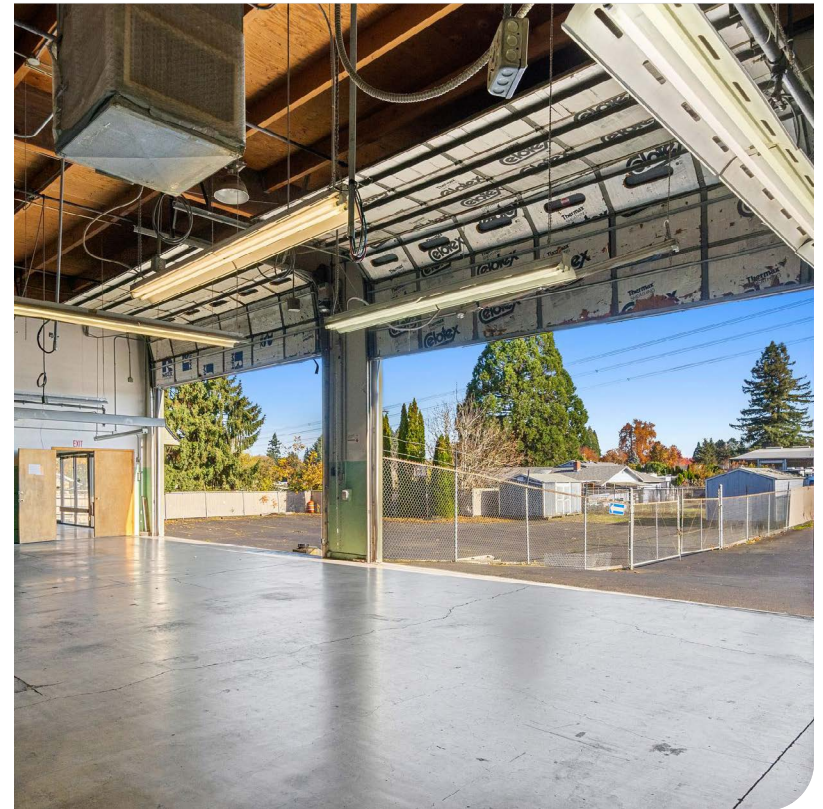
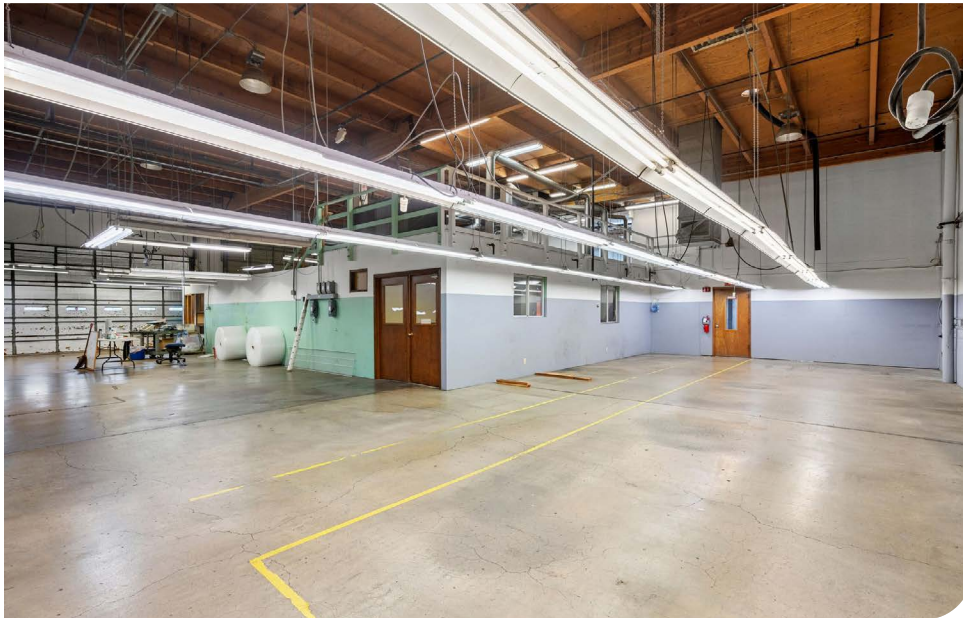
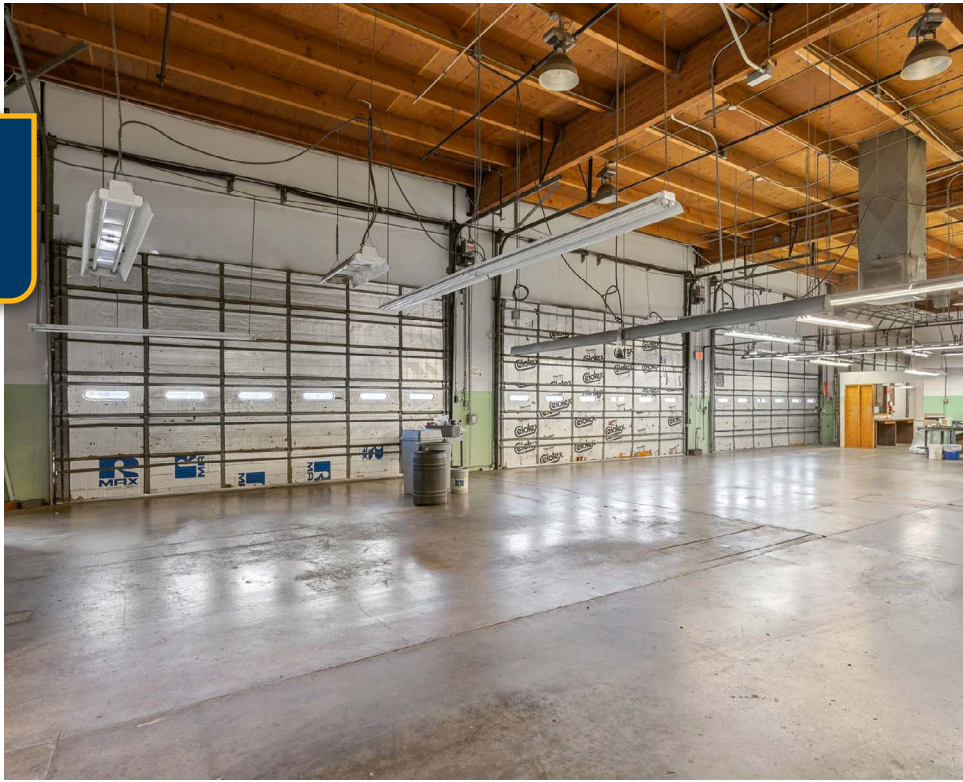
FLOOR PLAN

FLOOR PLAN



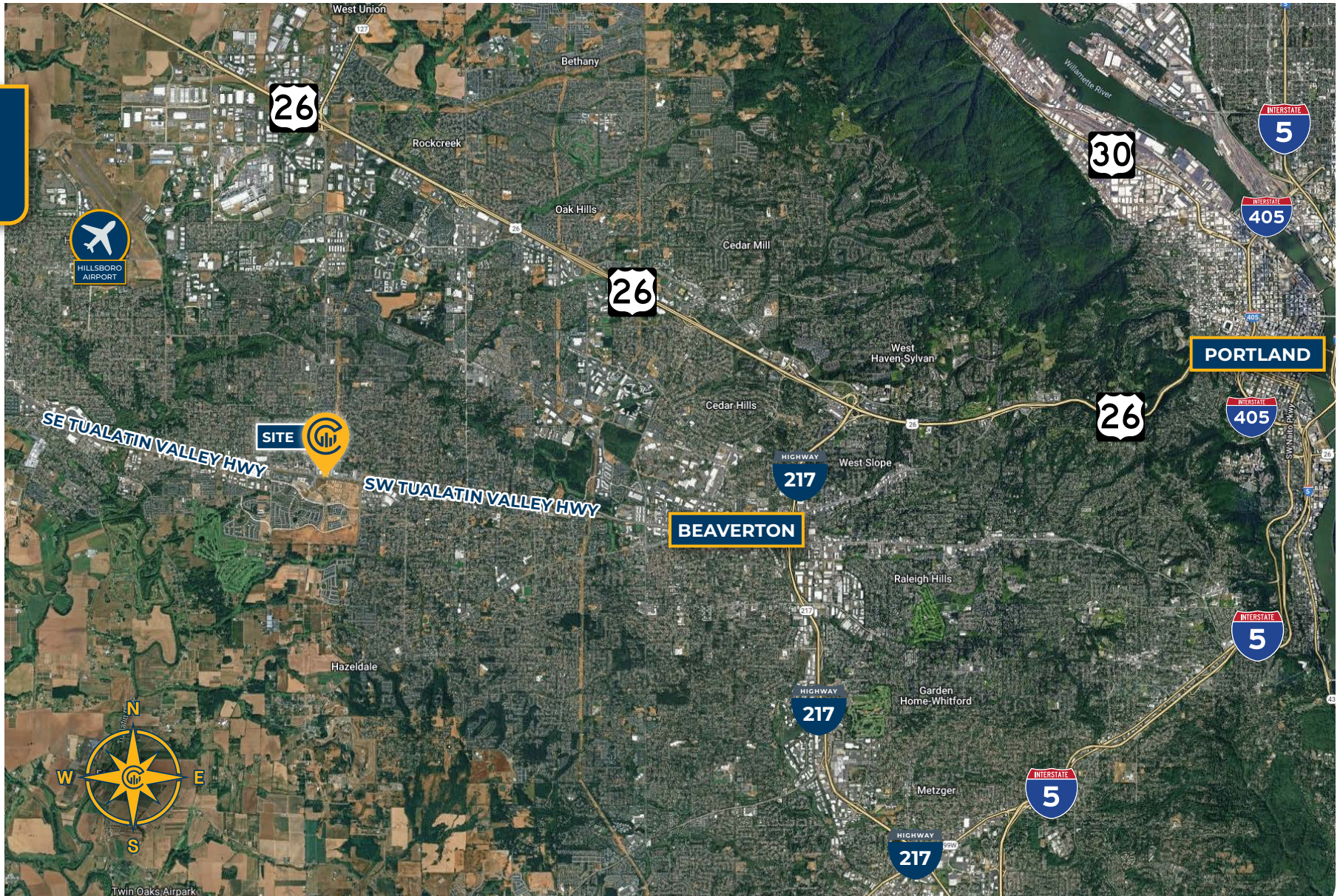


INTERIOR PHOTOS





LOCAL AERIAL MAP



*Average Daily Traffic Volume | Traffic Counts are Provided by REGIS Online at SitesUSA.com ©2025 | Map data ©2025 Google Imagery ©2025, Airbus, CNES / Airbus, Maxar Technologies, Metro, Portland Oregon, Public Laboratory, State of Oregon, U.S. Geological Survey, USDA/FPAC/GEO

DANIEL HELM, SIOR

Senior Vice President | Licensed in OR & WA

503-789-5750

dhelm@capacitycommercial.com

DANIEL SAYLES

Senior Vice President | Licensed in OR & WA

503-542-4351

dsayles@capacitycommercial.com

JAKOB NICHOLLS

Director | Licensed in OR & WA

704-840-5271

jakob.nicholls@nmrk.com