

# 6220 Belleau Wood Lane Sacramento, CA 95822

For Lease  
Light Industrial Space

4,800 SF  
Bakery  
Space



[Click Here](#)  
[Link to Video](#)

[Click Here](#)  
[Link to Equipment List](#)

4,800 Square Feet

Bakery Space

1,200A 120/208 - Includes Equipment - M-1 Space - (1) 12 x 14 Roll-up door  
Near entrance to Executive Airport

The information in this document was obtained from sources we deem reliable; however, no warranty or representation, expressed or implied, is made as to the accuracy of the information contained herein.



Herb Liverett Companies, Inc.

Herb Liverett  
BRE 01021820  
916-869-8017  
Liverett.herb@gmail.com

6800 Rio Linda Blvd.  
Rio Linda, CA 95673

# 6220 Belleau Wood Lane Sacramento, CA 95822

For Lease  
Light Industrial Space

4,800 SF  
Bakery  
Space



Herb Liverett Companies, Inc.

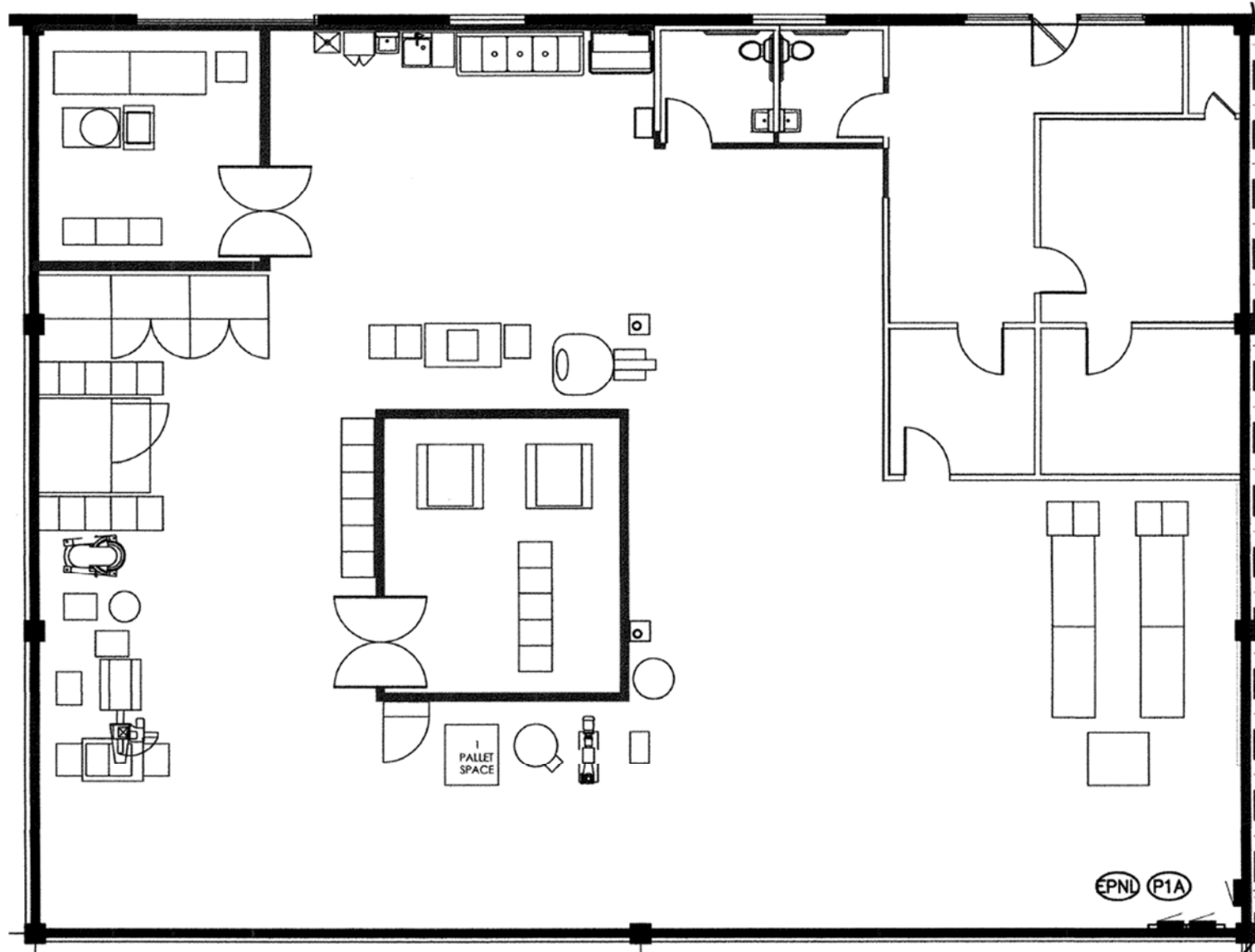
Herb Liverett  
BRE 01021820  
916-869-8017

6800 Rio Linda Blvd.  
Rio Linda, CA 95673

# 6220 Belleau Wood Lane Sacramento, CA 95822

For Lease  
Light Industrial Space

4,800 SF  
Bakery  
Space



Herb Liverett Companies, Inc.

Herb Liverett  
BRE 01021820  
916-869-8017  
Liverett.herb@gmail.com

6800 Rio Linda Blvd.  
Rio Linda, CA 95673

# 6220 Belleau Wood Lane Sacramento, CA 95822

For Lease  
Light Industrial Space

4,800 SF  
Bakery  
Space



Herb Liverett Companies, Inc.

Herb Liverett  
BRE 01021820  
916-869-8017  
Liverett.herb@gmail.com

6800 Rio Linda Blvd.  
Rio Linda, CA 95673

# 6220 Belleau Wood Lane Sacramento, CA 95822

For Lease  
Light Industrial Space

4,800 SF  
Bakery  
Space



Herb Liverett Companies, Inc.

Herb Liverett  
BRE 01021820  
916-869-8017  
Liverett.herb@gmail.com

6800 Rio Linda Blvd.  
Rio Linda, CA 95673

# 6220 Belleau Wood Lane Sacramento, CA 95822

For Lease  
Light Industrial Space

4,800 SF  
Bakery  
Space



Herb Liverett Companies, Inc.

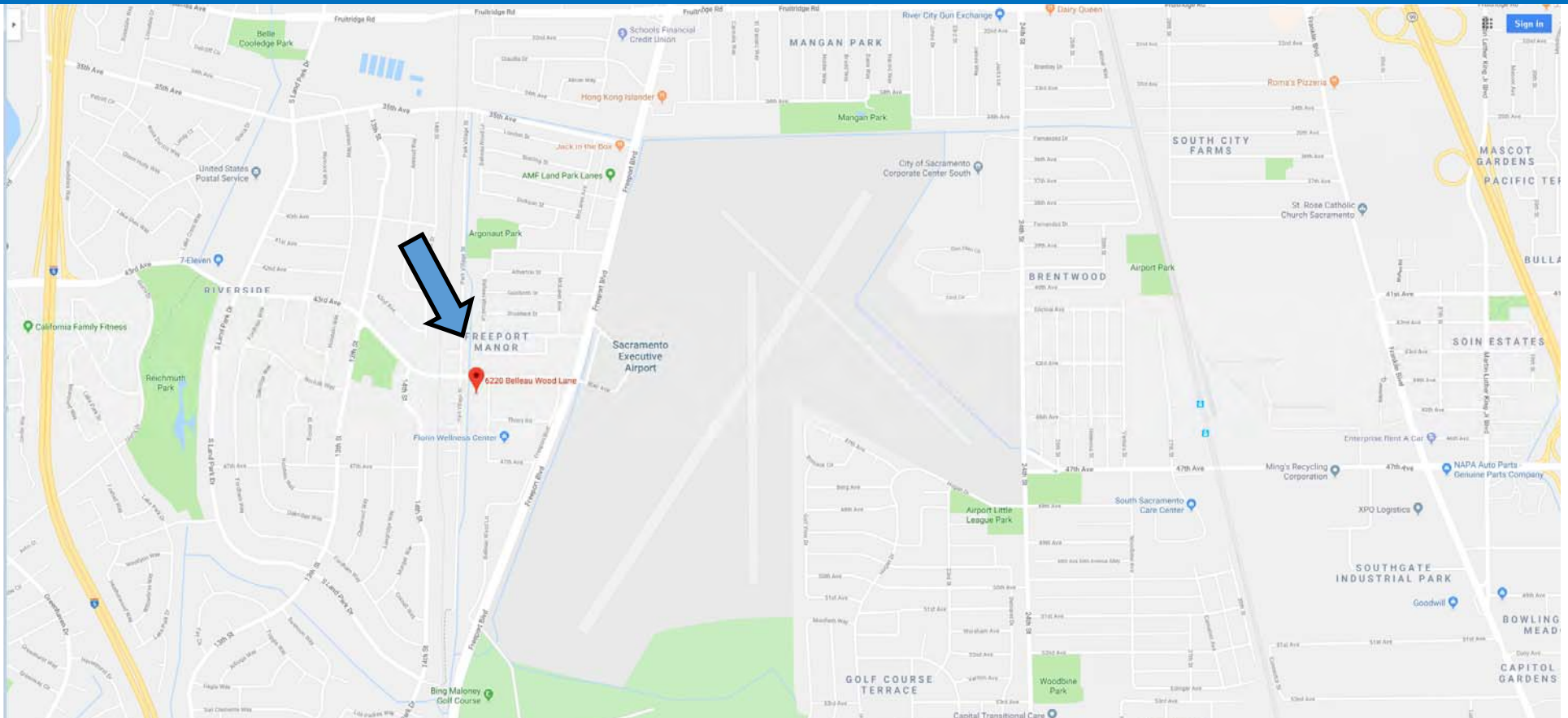
Herb Liverett  
BRE 01021820  
916-869-8017  
Liverett.herb@gmail.com

6800 Rio Linda Blvd.  
Rio Linda, CA 95673

# 6220 Belleau Wood Lane Sacramento, CA 95822

For Lease  
Light Industrial Space

4,800 SF  
Bakery  
Space



Includes Equipment - M-1 Space - (1) 12 x 14 Roll-up door  
Near entrance to Executive Airport

The information in this document was obtained from sources we deem reliable; however, no warranty or representation, expressed or implied, is made as to the accuracy of the information contained herein.



Herb Liverett Companies, Inc.

Herb Liverett  
BRE 01021820  
916-869-8017  
Liverett.herb@gmail.com

6800 Rio Linda Blvd.  
Rio Linda, CA 95673