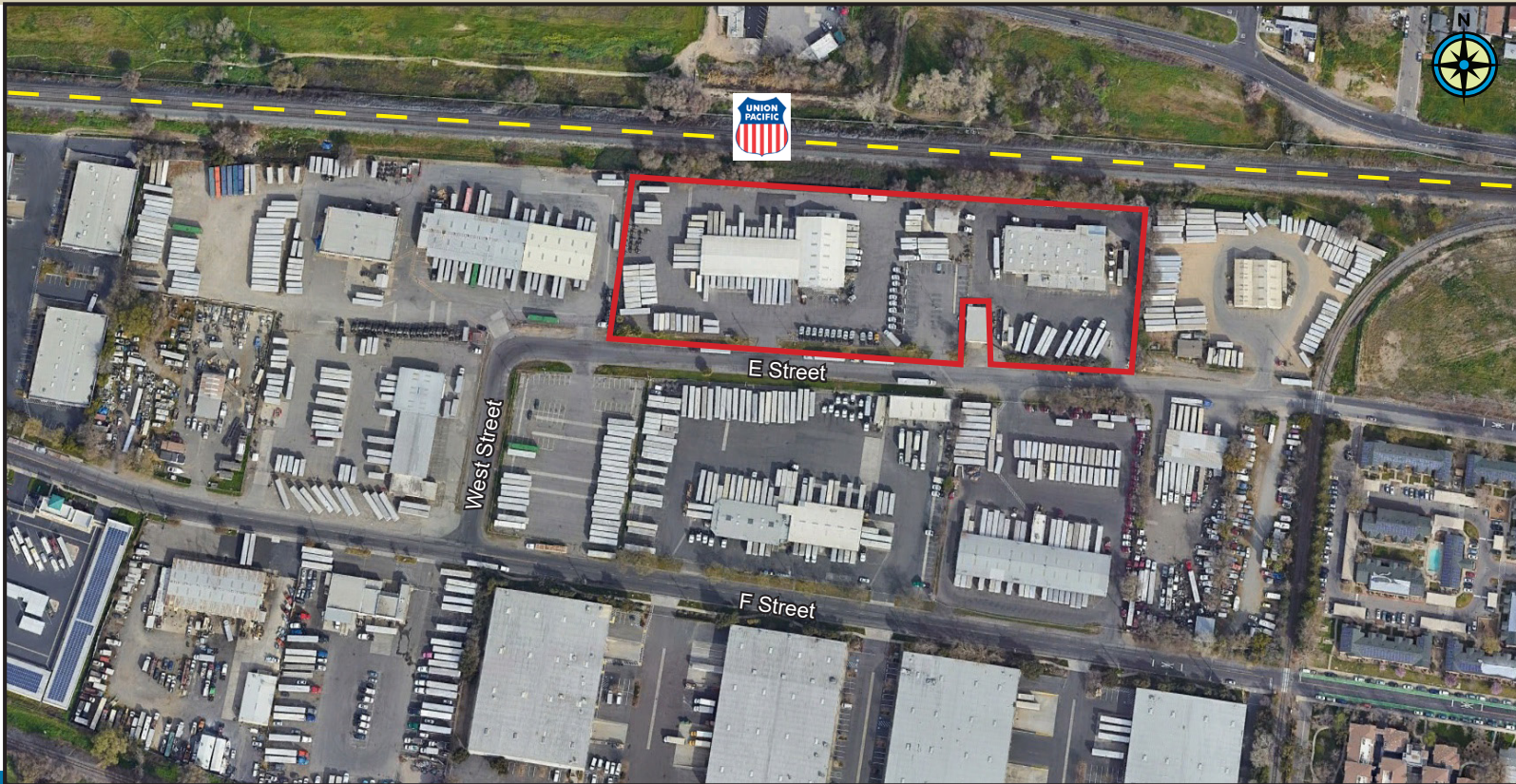


FOR LEASE OR SALE

820 & 830 E Street • West Sacramento

45 Dock Positions/Large Shop on ± 5.51 Acres of Land



“Can be Leased or Sold Separately”

Features

- Paved, Fenced and Lit Yard
- Immediate Access to the 5/50/80 Freeways
- Rare Truck Terminal in Nor Cal/Sacramento

830 E Street - Crossdock

- 45 Edge of Dock Plates
- ± 15,370 SF Dock Area
- ± 1,300 SF Office Area
- ± 1,600 SF - Two Bay Shop
- ± 3.95 Acres

820 E Street - Shop

- ± 17,818 SF Total
- ± 3,000 SF Office Area
- 5 GL Doors - Ideal for Trucks & Trailers
- 2 Loading Dock Positions
- 400 Amps, 277/480V, 3-Phase
- ± 16' Clear Height
- ± 1.56 Acres

For more information, please contact:

NEWMARK

Sean Mahoney

916.569.2328

sean.mahoney@nrmk.com

CA License #01332661

Steve Sprenger

714.264.3993

steve.sprenger@nrmk.com

CA License #01202806

Burr & Temkin

Jim Kemmerer

425.837.1500

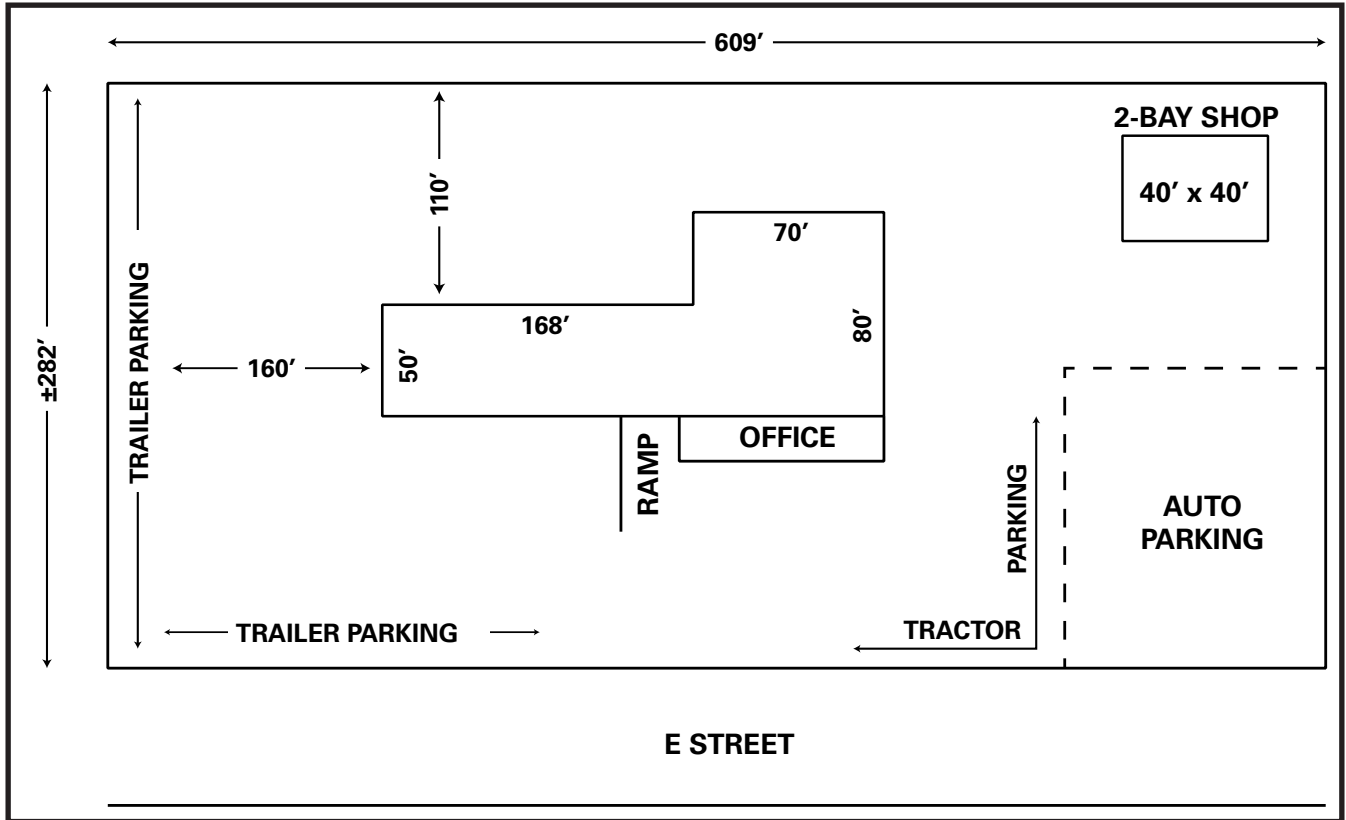
kemmerer@burrtemkin.com

FOR LEASE OR SALE

820 & 830 E Street • West Sacramento

45 Dock Positions/Large Shop on ± 5.51 Acres of Land

Site Plan (830 E Street)



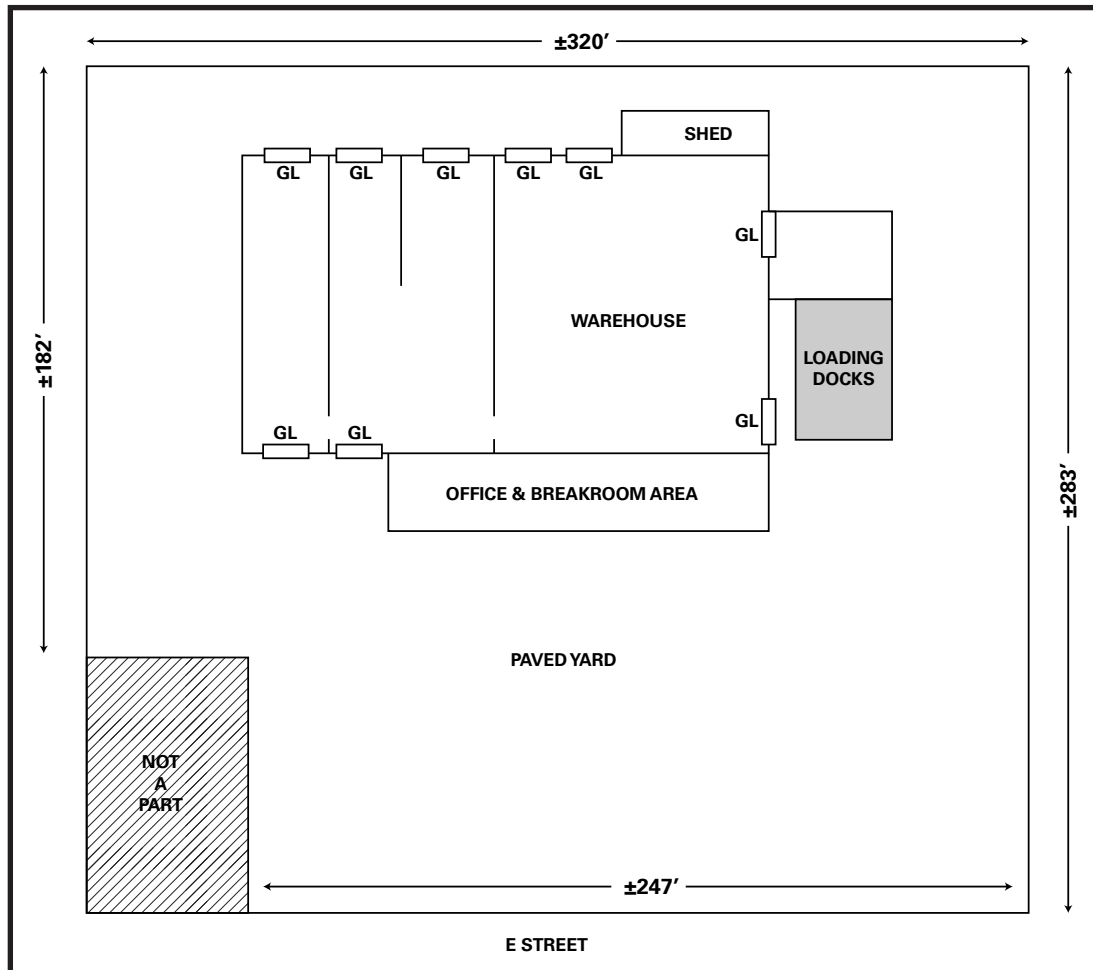
The information contained herein was obtained from sources believed reliable; however, NEWMARK/BURR & TEMKIN make no guarantees, warranties, or representations as to the completeness or accuracy thereof. The presentation of this property is submitted subject to errors, omissions, change of price or conditions prior to sale or lease, or withdrawal without notice.

FOR LEASE OR SALE

820 & 830 E Street • West Sacramento

45 Dock Positions/Large Shop on ± 5.51 Acres of Land

Site Plan (820 E Street)

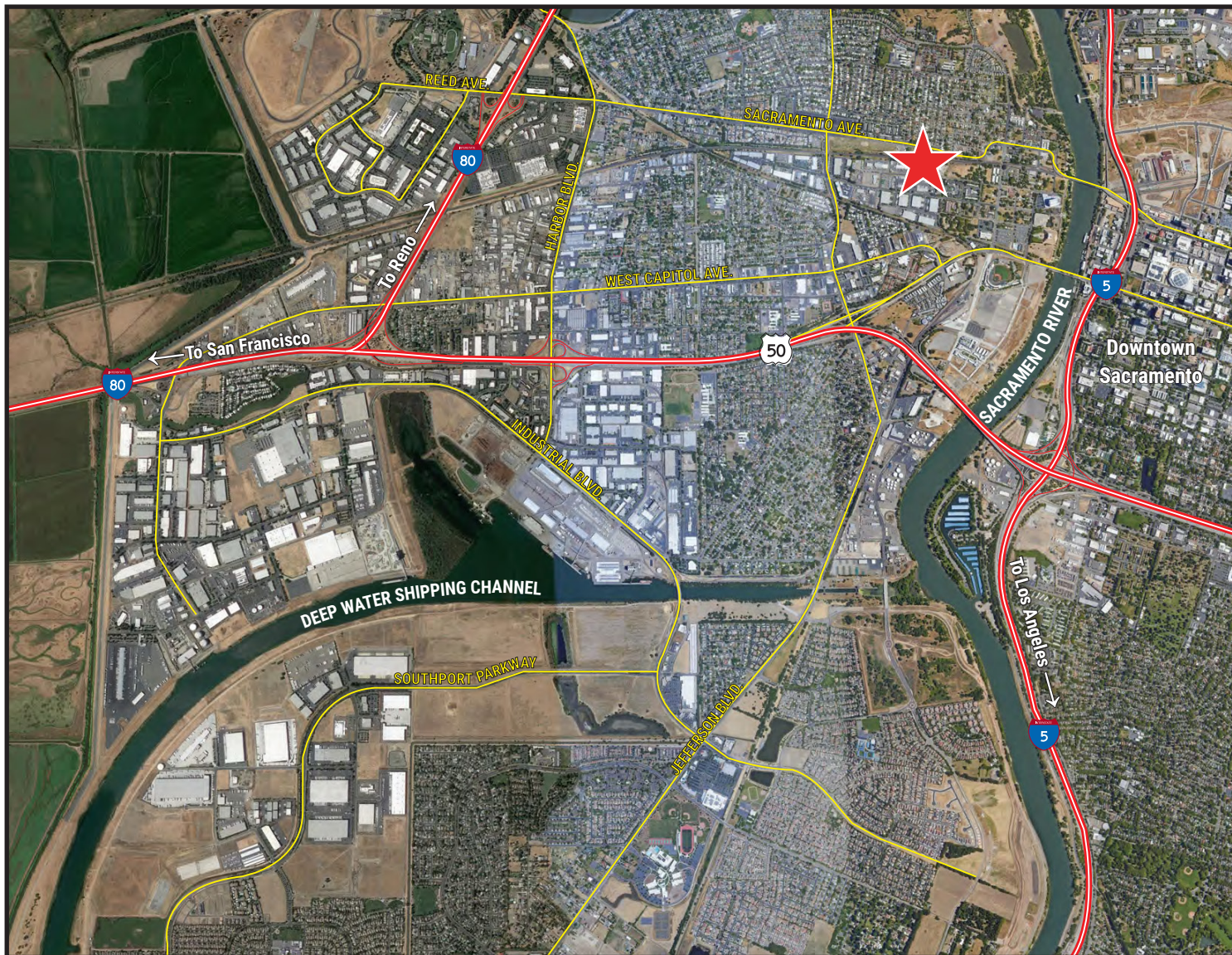


FOR LEASE OR SALE

820 & 830 E Street • West Sacramento

45 Dock Positions/Large Shop on ± 5.51 Acres of Land

LOCATOR MAP



For more information, please contact:

NEWMARK

Burr & Temkin

Sean Mahoney

916.569.2328

sean.mahoney@nrmk.com

CA License #01332661

Steve Sprenger

714.264.3993

steve.sprenger@nrmk.com

CA License #01202806

Jim Kemmerer

425.837.1500

kemmerer@burrtemkin.com

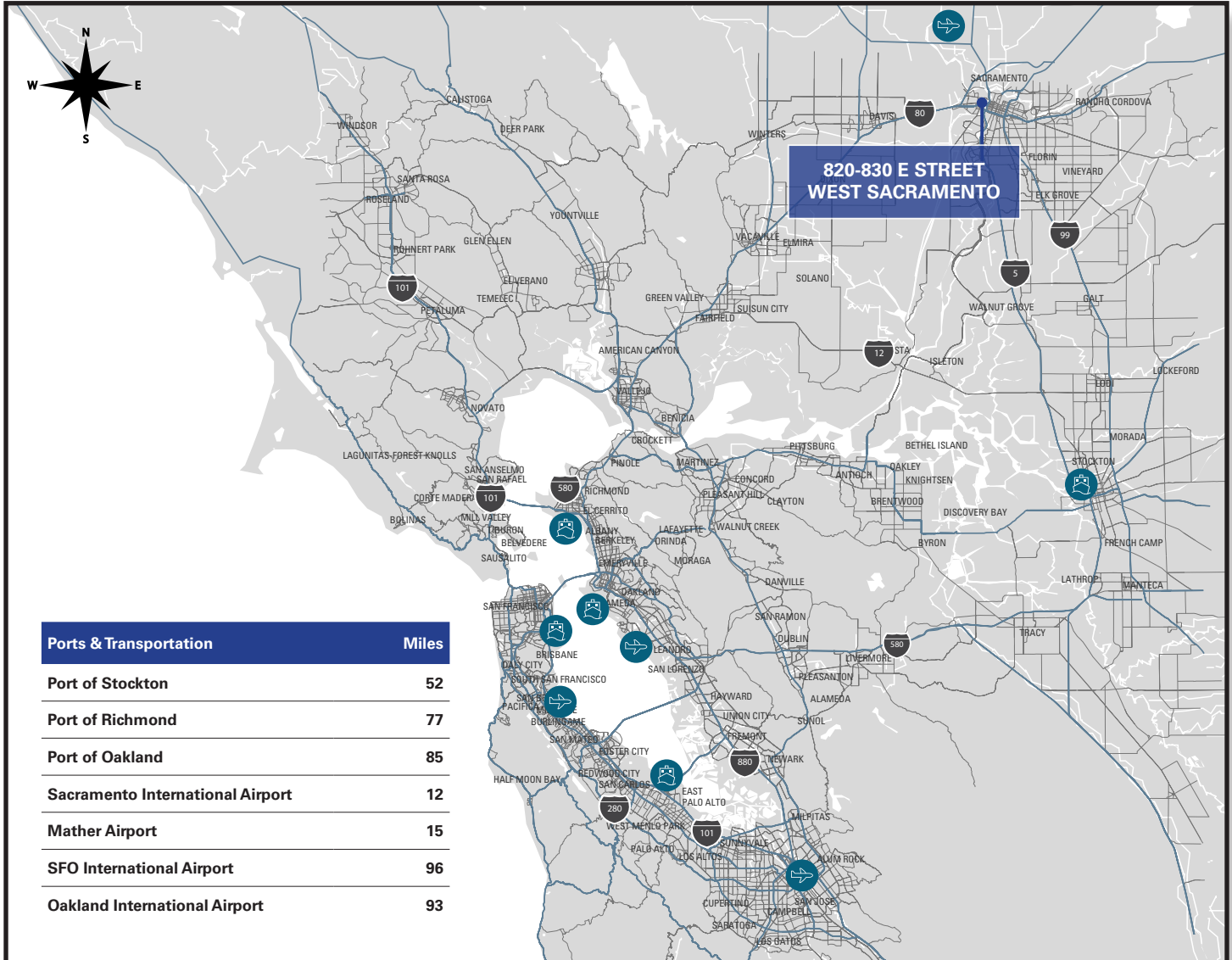
The information contained herein was obtained from sources believed reliable; however, NEWMARK/BURR & TEMKIN make no guarantees, warranties, or representations as to the completeness or accuracy thereof. The presentation of this property is submitted subject to errors, omissions, change of price or conditions prior to sale or lease, or withdrawal without notice.

FOR LEASE OR SALE

820 & 830 E Street • West Sacramento

45 Dock Positions/Large Shop on ± 5.51 Acres of Land

REGIONAL MAP



For more information, please contact:

NEWMARK

Burr & Temkin

Sean Mahoney

916.569.2328

sean.mahoney@nrmk.com

CA License #01332661

Steve Sprenger

714.264.3993

steve.sprenger@nrmk.com

CA License #01202806

Jim Kemmerer

425.837.1500

kemmerer@burrtemkin.com

The information contained herein was obtained from sources believed reliable; however, NEWMARK/BURR & TEMKIN make no guarantees, warranties, or representations as to the completeness or accuracy thereof. The presentation of this property is submitted subject to errors, omissions, change of price or conditions prior to sale or lease, or withdrawal without notice.