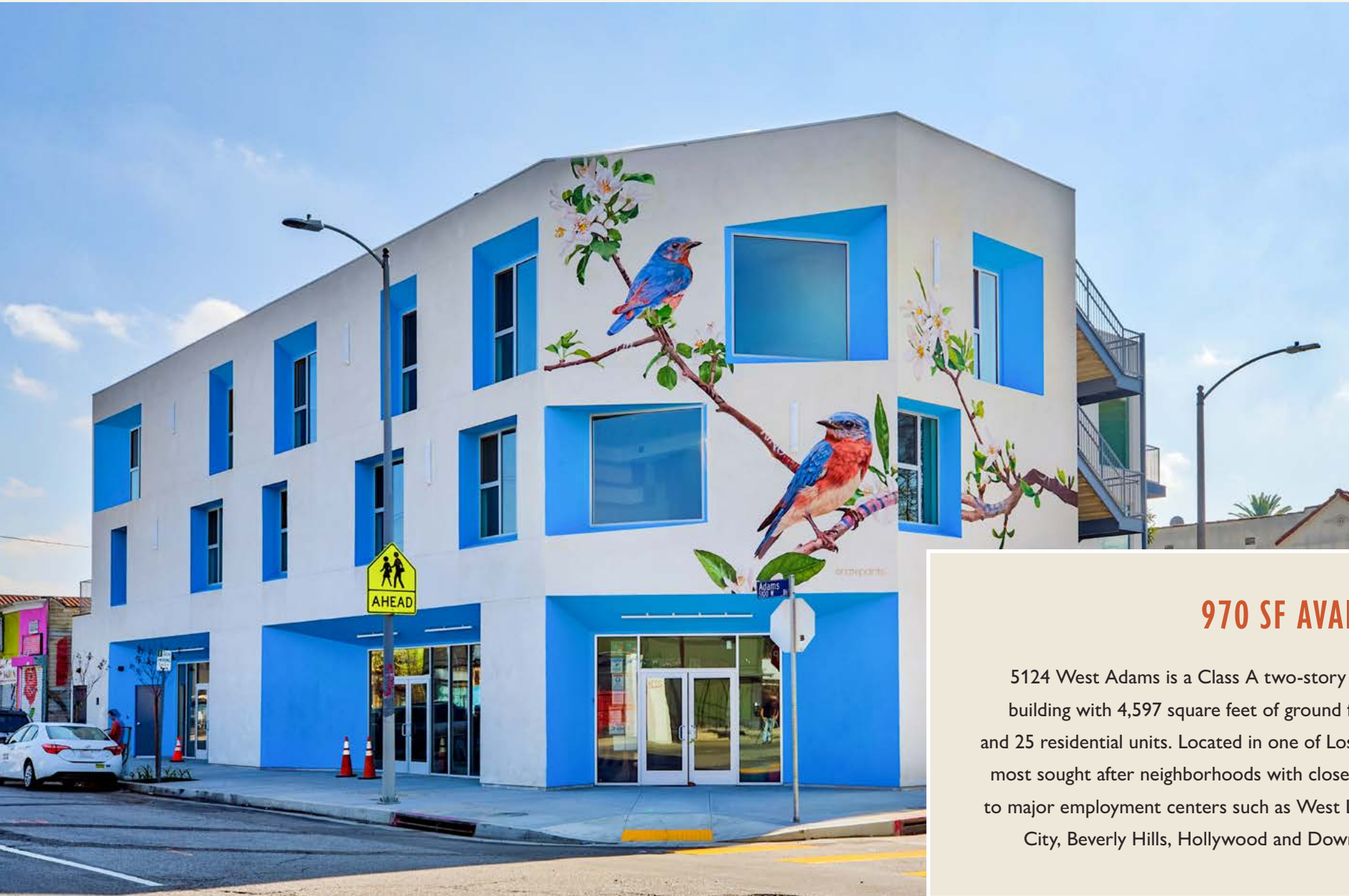


5124 WEST ADAMS

PRIME RETAIL SPACE AVAILABLE

W. Adams
BOULEVARD

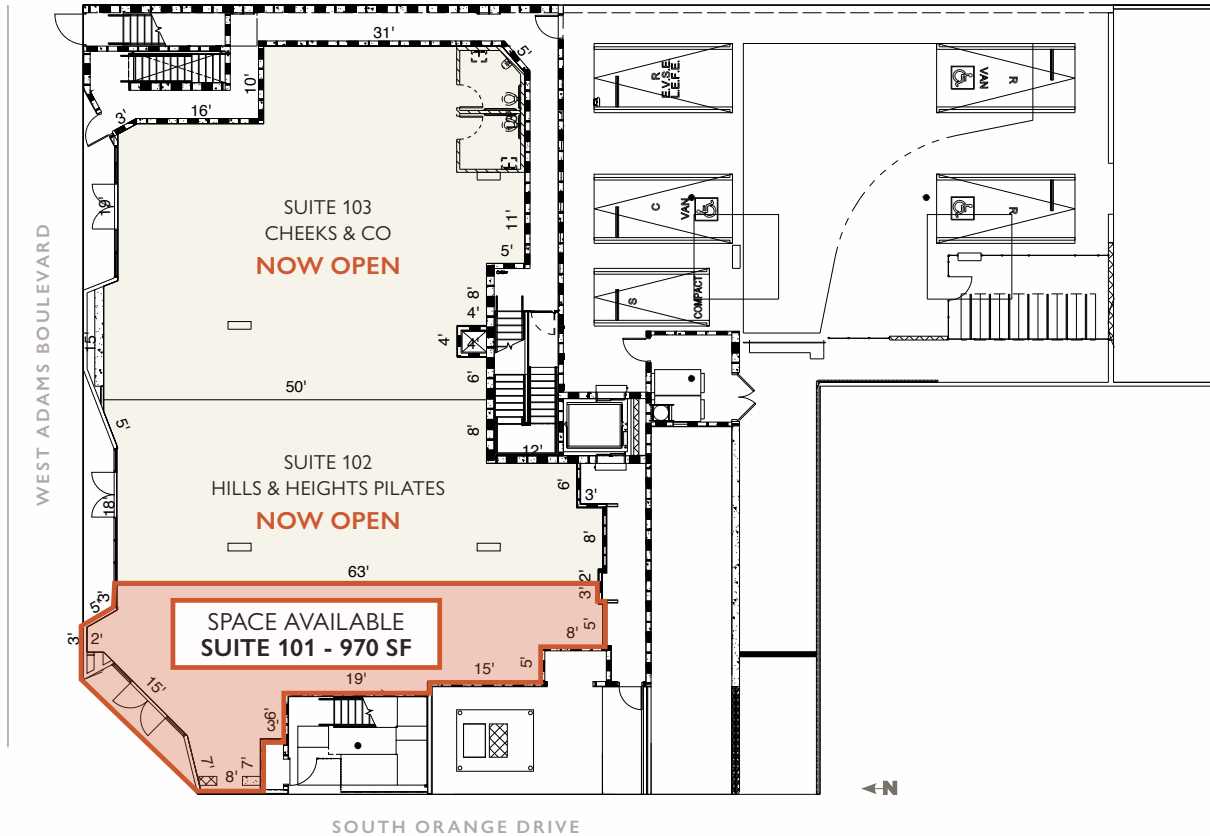


970 SF AVAILABLE

5124 West Adams is a Class A two-story mixed use building with 4,597 square feet of ground floor retail and 25 residential units. Located in one of Los Angeles's most sought after neighborhoods with close proximity to major employment centers such as West LA, Culver City, Beverly Hills, Hollywood and Downtown LA.

5124 WEST ADAMS

PRIME RETAIL SPACE AVAILABLE



14'

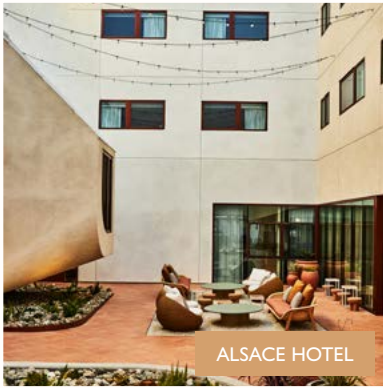
CEILING HEIGHT WITH EXPOSED DUCTWORK

PRIME RETAIL OPPORTUNITY WITH HIGH VISIBILITY ON WEST ADAMS BLVD

WEST ADAMS NEIGHBORHOOD



VICKY'S ALL DAY



ALSACE HOTEL



CENTO



FARMHOUSE KITCHEN



24K+

DAILY TRAFFIC COUNT FROM ADAMS BOULEVARD

1,135,430

2023 POPULATION WITHIN A 5-MILE RADIUS

464,740

2023 HOUSEHOLDS WITHIN A 5-MILE RADIUS

FOR RETAIL LEASING INFORMATION:

DAVID ATTAR #01836260

323.860.4939 | dattar@cimgroup.com