

# 3,920 SF Freestanding Retail/Office

973 West North Temple, Salt Lake City, Ut



## Signalized Hard Corner

**LEASE RATE \$1.40 PSF,  
NNN**

### Property Details

Total Size: 3,920 SF

- Attractive layout with large showroom, breakroom and private offices
- Temperature controlled throughout
- Large glass storefront extends across the whole building
- Freestanding building located on a signalized hard corner with great visibility and access
- Large monument sign on high traffic North Temple
- Ample parking with ability to park on both sides of the building
- Great signage opportunities on both sides of the building
- Multiple TRAX stations within a short walking distance of the site



Bob Mills  
385.988.6477  
bob@adventut.com

Riley Mills  
385.988.6478  
riley@adventut.com

# 3,920 SF Freestanding Retail/Office

973 West North Temple, Salt Lake City, Ut

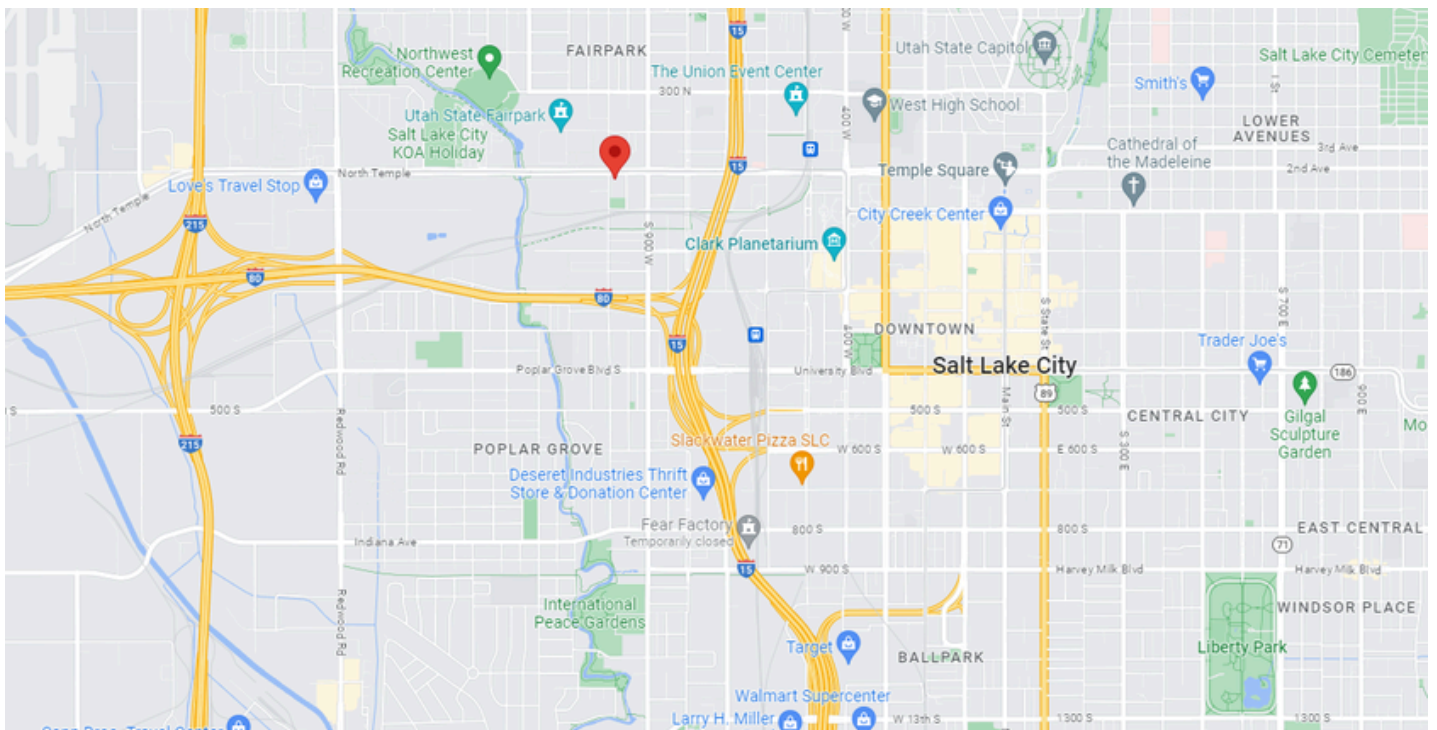
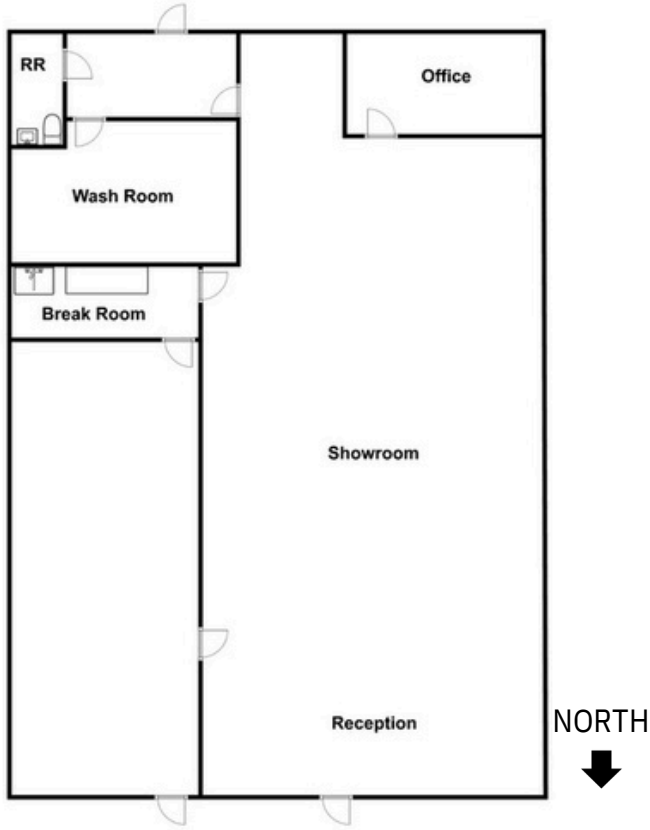


Bob Mills  
385.988.6477  
bob@adventut.com

Riley Mills  
385.988.6478  
riley@adventut.com

# 3,920 SF Freestanding Retail/Office

973 West North Temple, Salt Lake City, Ut



Bob Mills  
385.988.6477  
bob@adventut.com

Riley Mills  
385.988.6478  
riley@adventut.com