



RE/MAX

COMMERCIAL®

FOR SALE

\$1,200,000



1220/1226 Washington Blvd | Newcastle | WY | 82701

A great opportunity awaits! This prime business location is fully set up and ready for you to start your restaurant. All equipment, tables, and chairs are included. The building is approximately 2,237 sf and built in 2016. May be purchased separately at \$850,000 with two lots. The convenience store is an open shell, complete with the canopy and fuel pumps already in place. Alternatively, you may want to explore different options for this space and lot. The property also includes storage units of various sizes. This space is 4,844 sf with 2,444 sf being the C-Store and 2,400 sf being storage units. May be purchased separately at \$350,000. All around great parking with concrete and additional gravel areas. Call for more information.

- Building 1 - 2,237 sf
- Building 2 - 4,844 sf
- Lot Sq. Ft: 56,715.12
- Lot Acres: 1.30
- Area: Newcastle WY
- Zoning: C-1
- MLS #24-1486



Ryan Conklyn - Broker

RE/MAX Professionals

YOUR REAL ESTATE CONSULTANT

907 E. Boxelder Rd.
Gillette, Wyoming
82718

Phone: 307-682-6622
Cell: 307-660-8144
Email: ryan@remaxwy.com
Fax: 307-686-7554

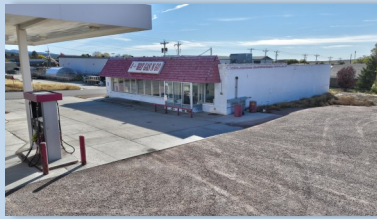


Each office independently owned and operated. All information above is deemed reliable but buyer should do additional research.



FOR SALE

1220/1226 Washington Blvd.
NEWCASTLE, WY 82729



Ryan Conklin - Broker

RE/MAX Professionals

YOUR REAL ESTATE CONSULTANT

907 E. Boxelder Rd.
Gillette, Wyoming
82718

Phone: 307-682-6622
Cell: 307-660-8144
Email: ryan@remaxwy.com
Fax: 307-686-7554



Each office independently owned and operated. All information above deemed reliable. But buyer should do additional research.