

FOR SALE • OFFICE/INDUSTRIAL

1450 Lisbon Street • Lewiston, ME



Joe Malone, CCIM
O 207.773.2554
C 207.233.8000
Joe@malonecb.com



Luke Malone
O 207.358.0475
C 207.939.0155
Luke@malonecb.com

28,867± SF FLEX BUILDING

- Flexible layout including industrial & office space
- The building contains the state's largest television studio
- Located at the intersection of Lisbon St and Westminster St
- Ample parking on site and one overhead door

SALE PRICE: \$1,250,000



PROPERTY SUMMARY

1450 Lisbon Street • Lewiston, ME



Site Info

OWNER:	Maine Public Broadcasting Corp.
DEED:	Book 9210, Page 212
ASSESSOR:	Map 124, Lot 29
LOT SIZE:	1.43± AC
SIGNAGE:	On building
PARKING:	Ample on-site
ROAD FRONTAGE:	221' on Lisbon St 150' on Westminster St
ZONING:	HB – Highway Business District
PROPERTY TAXES:	\$39,683 (2025)



Building Info

BUILDING SIZE:	28,867± SF
YEAR BUILT:	1953; remodeled in 1998
CONSTRUCTION:	Masonry
ROOF:	Flat; rubber membrane
SIDING:	Concrete
FLOORING:	Mixed
ELECTRICITY:	1,000 amp; 3 phase
HVAC:	Forced hot air; central A/C
UTILITIES:	Municipal water/sewer
KITCHEN:	Yes
RESTROOM:	Separate men's & women's
SPRINKLER:	Dry system
LOADING:	One (1) overhead door
ELEVATOR:	Yes



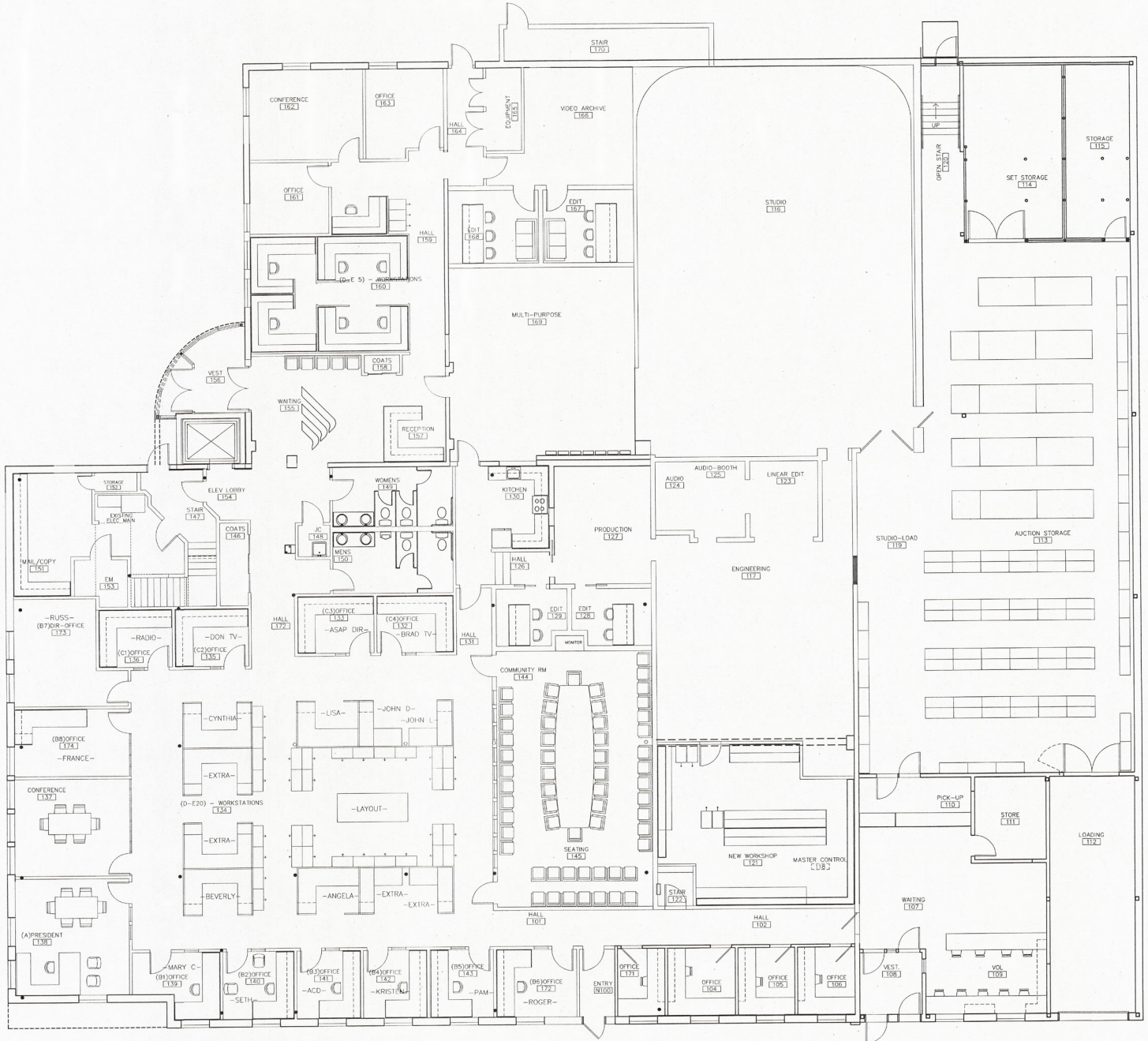
PHOTOS

1450 Lisbon Street • Lewiston, ME



FIRST FLOOR PLAN

1450 Lisbon Street • Lewiston, ME



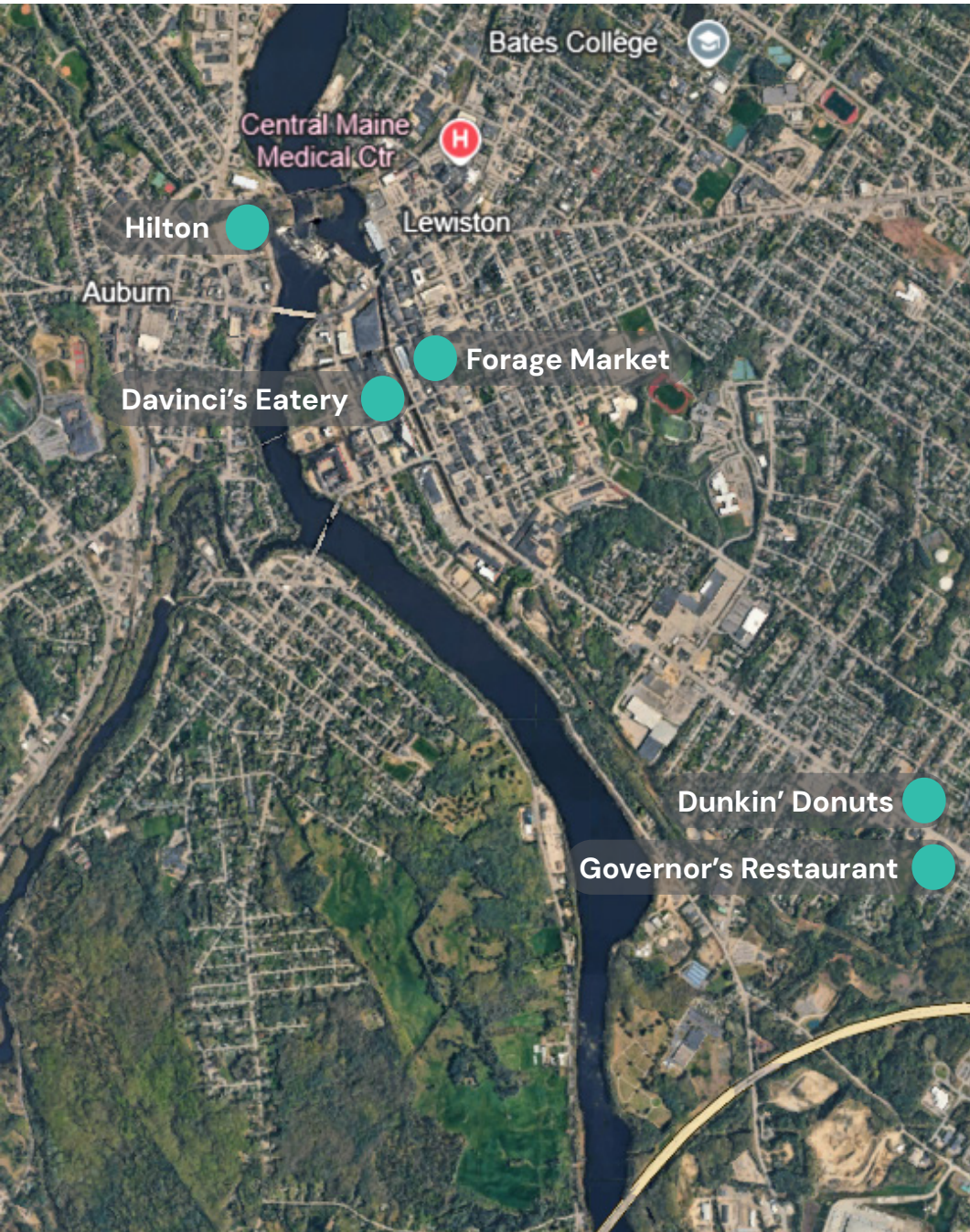
SECOND FLOOR PLAN

1450 Lisbon Street • Lewiston, ME



LOCATION MAP

1450 Lisbon Street • Lewiston, ME



NEARBY

STAY

RAMADA BY WYNDHAM **Hilton Garden Inn**

DINE

Davinci's **DUNKIN' DONUTS**

GOVERNOR'S Restaurant & Bakery **FORAGE**

This document has been prepared by Malone Commercial Brokers for advertising and general information only. Malone Commercial Brokers makes no guarantees, representations or warranties of any kind, expressed or implied, regarding, but not limited to, warranties of content, accuracy, and reliability. Any interested party should undertake their own inquiries as to the accuracy of the information. Malone Commercial Brokers excludes unequivocally all informed or implied terms, conditions and warranties arising out of this document and excludes all liability for loss and damages there from. All data is subject to change of price, error, omissions, other conditions or withdrawal without notice. Malone Commercial Brokers is acting as the Seller's/Lessor's agent in the marketing of this property.