

1370 Dundas Street E Mississauga, ON

For Sublease: Office Space



Available Space
303: 1,392 SF



Availability
Immediate



Net Lease
\$17.00 PSF
T.M.I.
\$16.20 PSF (2026 est.)

Property Highlights

- Close to Hwy 427 & QEW
- Bus stop at front of property
- Abundant free surface parking at back of property
- Intercom for after hours

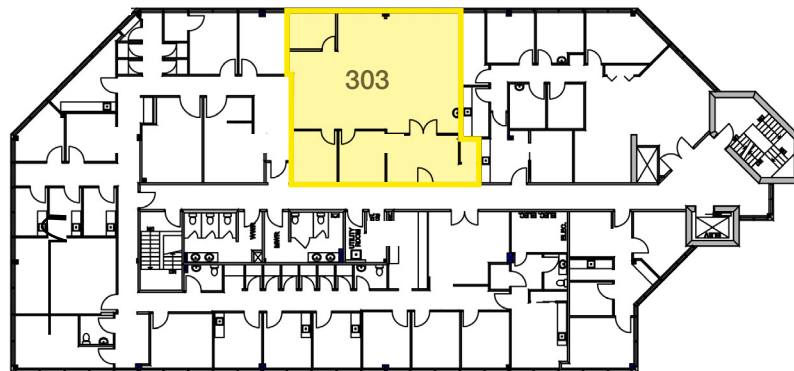


Steven Gottdank
Vice President*
905.247.9221
sgottdank@lennard.com
*Sales Representative

Here is where your business
will grow.

1370 Dundas Street E

Mississauga, ON



Lennard:

Lennard Commercial Realty, Brokerage
602-350 Burnhamthorpe Road W
905.625.5020 • lennard.com

Steven Gottdank*, Vice President
905.247.9221 • sgottdank@lennard.com

*Sales Representative. Statements and information contained are based on the information furnished by principals and sources which we deem reliable but for which we can assume no responsibility. Property outlines are approximate. Lennard Commercial Realty, Brokerage.