



## OrderMatic Business Park

### 340 S Eckroat St, Oklahoma City, OK 73129

OrderMatic Business Park features nine pre-engineered steel frame office/warehouse buildings and one single-story masonry building. The overall site spans 8.08 acres and is located south of E. Reno Avenue and S. Eckroat, just southwest and west of I-40 (Tinker Diagonal), approximately 3.6 miles from Downtown. The complex totals 101,268 square feet and previously served as a manufacturing facility. The buildings have heavy power capabilities and climate-controlled warehouses. Creative financing and lease-to-purchase options are available. Individual buildings are for sale or lease.

[Go To Property Page](#)



**TUCKER CASON**

Vice President  
405-323-8508  
tcason@mercerc-company.com



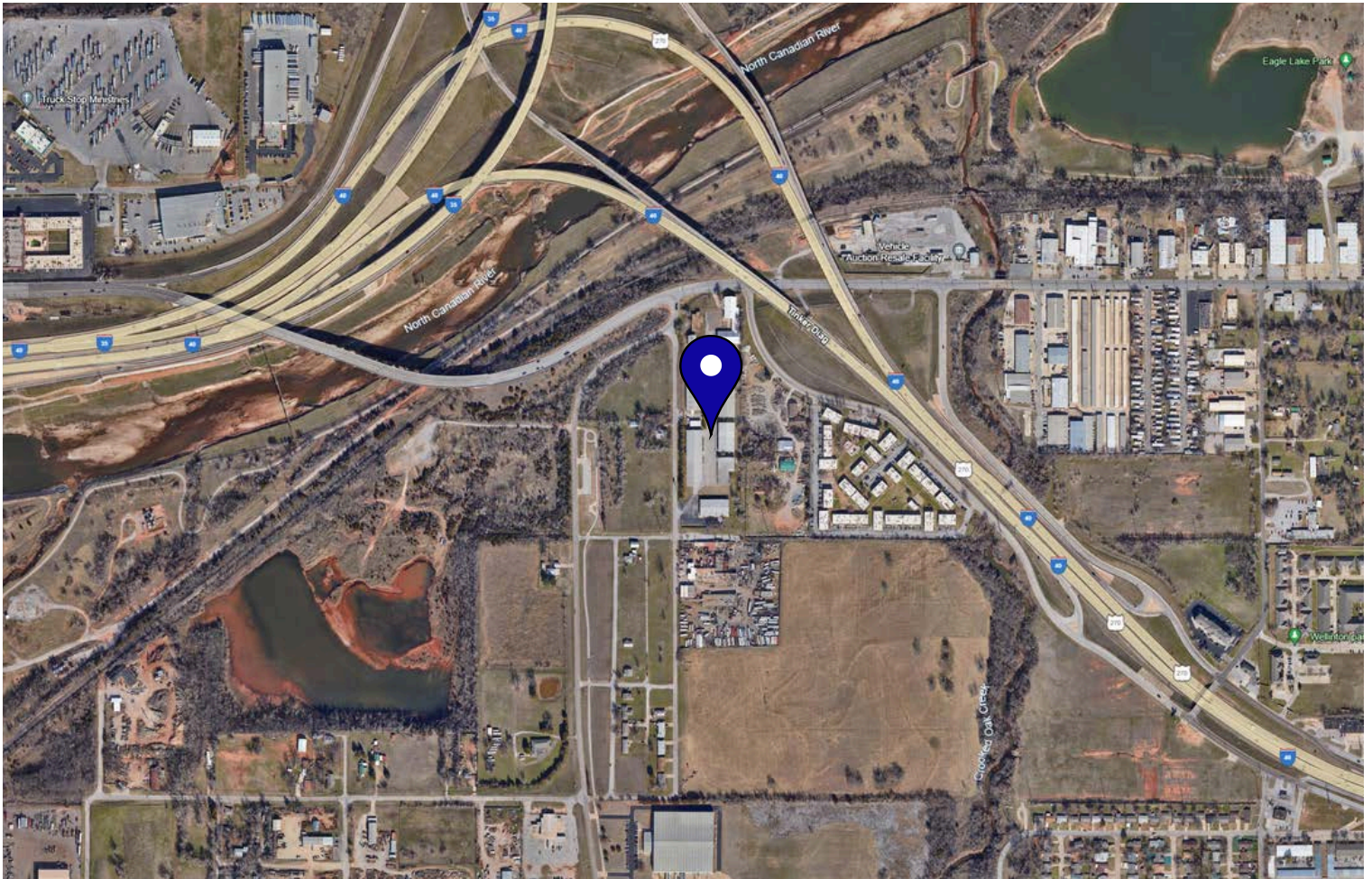
**KADEN GFELLER**

Sales Agent  
405-706-6872  
kgfeller@mercerc-company.com

The information contained herein has been given to us by the owner of the property or other sources we deem reliable. We have no reason to doubt its accuracy, but we do not guarantee it. All information should be verified before purchase or lease.

# PARK AVAILABILITY & LOCATION

## ORDERMATIC BUSINESS PARK



# BUILDING OVERVIEW

## ORDERMATIC BUSINESS PARK

### BUILDING 1-A

Total SF: 7,478  
Clear Height- 13'  
Grade Level Door  
2 Heavy Power  
100% Insulated  
1,827 SF of Common Area

### BUILDING 1-B

Total SF: 6,716  
Clear Height- 13'  
2 Grade Level Doors  
Heavy Power  
100% Insulated  
1,827 SF of Common Area

### BUILDING 2

Total SF: 11,550  
Clear Height - 12'-17'  
1 Grade Level Door  
Heavy Power

### BUILDING 3

Total SF: 11,550  
Office SF: 500  
Clear Height- 12'-16'  
1 Grade Level Door  
Heavy Power

### BUILDING 5

Total SF: 11,573  
Office SF: 1,000 SF  
Clear Height - 14'-20'  
2 Grade Level Doors  
Heavy Power  
HVAC Warehouse

### BUILDING 10

Total SF: 3,374  
Office SF: 1,945

# BUILDING 1-A

SPACE AVAILABLE: 7,478 SF



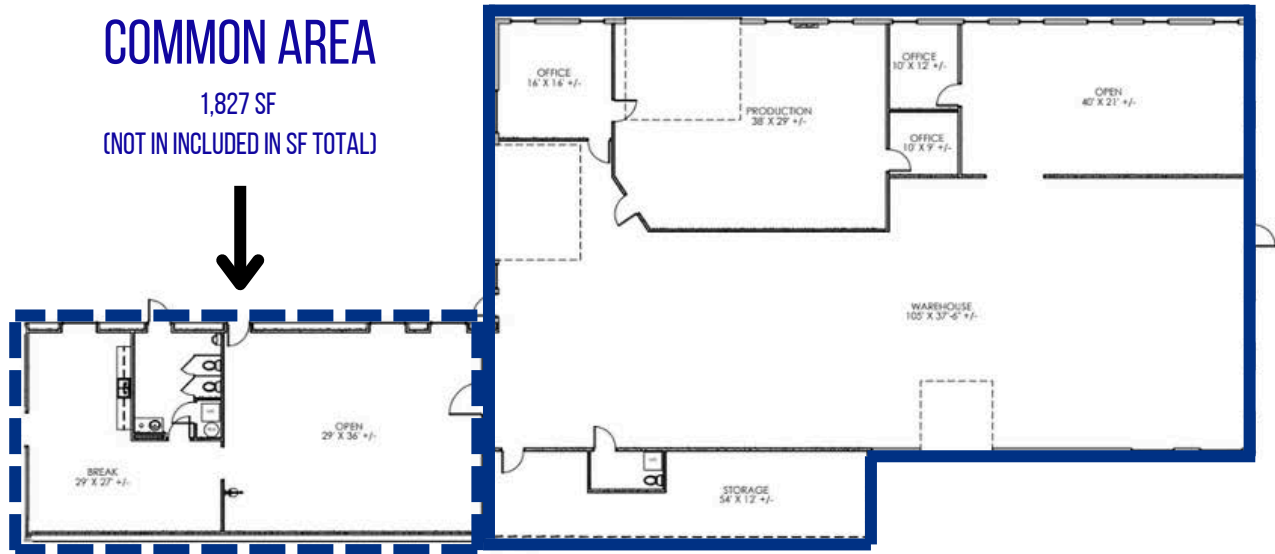
## BUILDING FEATURES

- ✓ 100% Insulated
- ✓ 13' Clear Height
- ✓ Grade Level Door - 2 (12.5' x 10')
- ✓ Heavy Power
- ✓ Purchase Options Available

[Learn More](#)

## COMMON AREA

1,827 SF  
(NOT INCLUDED IN SF TOTAL)



# BUILDING 1-B

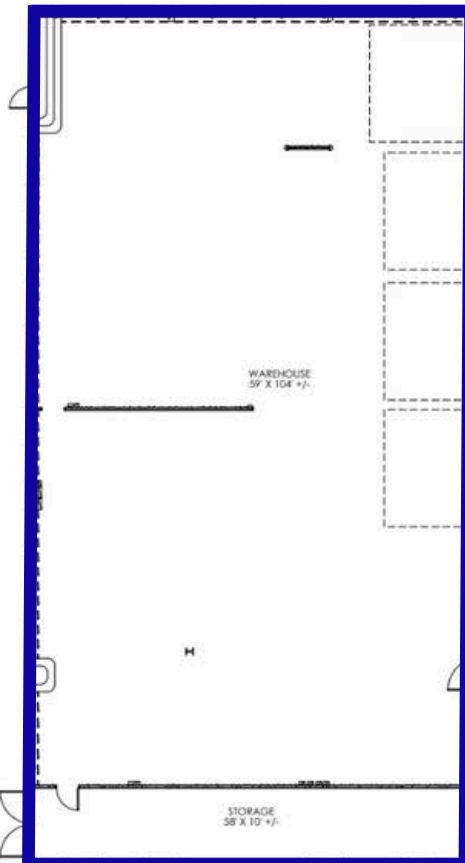
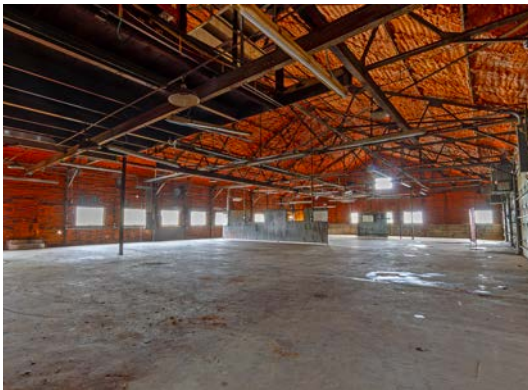
SPACE AVAILABLE: 6,716 SF



## BUILDING FEATURES

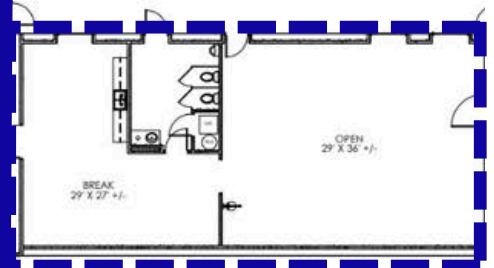
- ✓ 13' Clear Height
- ✓ 100% insulated
- ✓ 2 Ton Crane
- ✓ Mezzanine Storage
- ✓ Grade Level Door - 4 (12.5' x 10')
- ✓ Heavy Power
- ✓ Exterior Construction In Progress
- ✓ Purchase Options Available

[Learn More](#)



## COMMON AREA

1,827 SF  
(NOT INCLUDED IN SF TOTAL)



# BUILDING 2

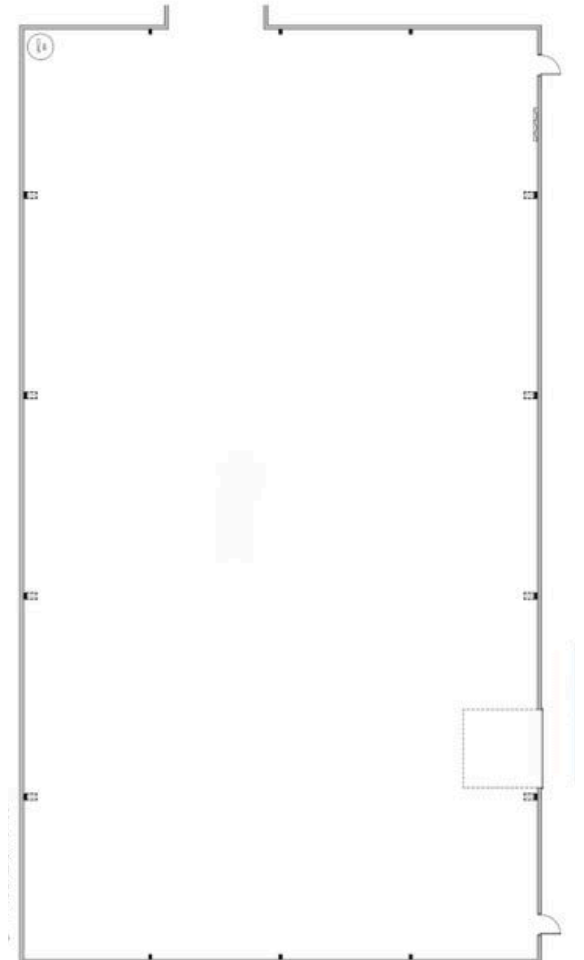
SPACE AVAILABLE: 11,550 SF



## BUILDING FEATURES

- ✓ 12'-17' Clear Height
- ✓ Insulated Warehouse
- ✓ Pitched Roof
- ✓ HVAC Warehouse
- ✓ Grade Level Door - 1
- ✓ Heavy Power
- ✓ 100% Warehouse
- ✓ Purchase Options Available

[Learn More](#)



# BUILDING 3

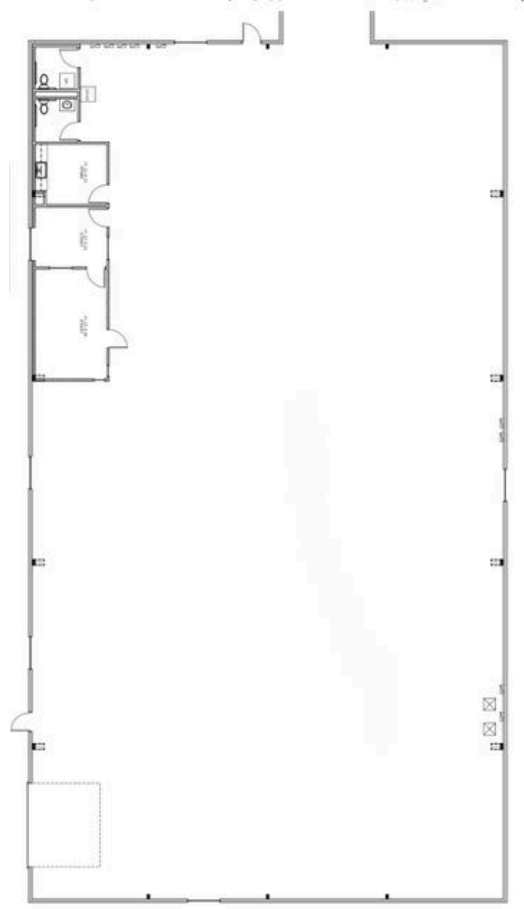
SPACE AVAILABLE: 11,550 SF



## BUILDING FEATURES

- ✓ Office Space: 500 SF
- ✓ 12'-16' Clear Height
- ✓ Grade Level Door- 1
- ✓ HVAC Warehouse
- ✓ Bathrooms
- ✓ Heavy Power
- ✓ Insulated Warehouse
- ✓ Pitched Roof
- ✓ Purchase Options Available

[Learn More](#)



# BUILDING 5

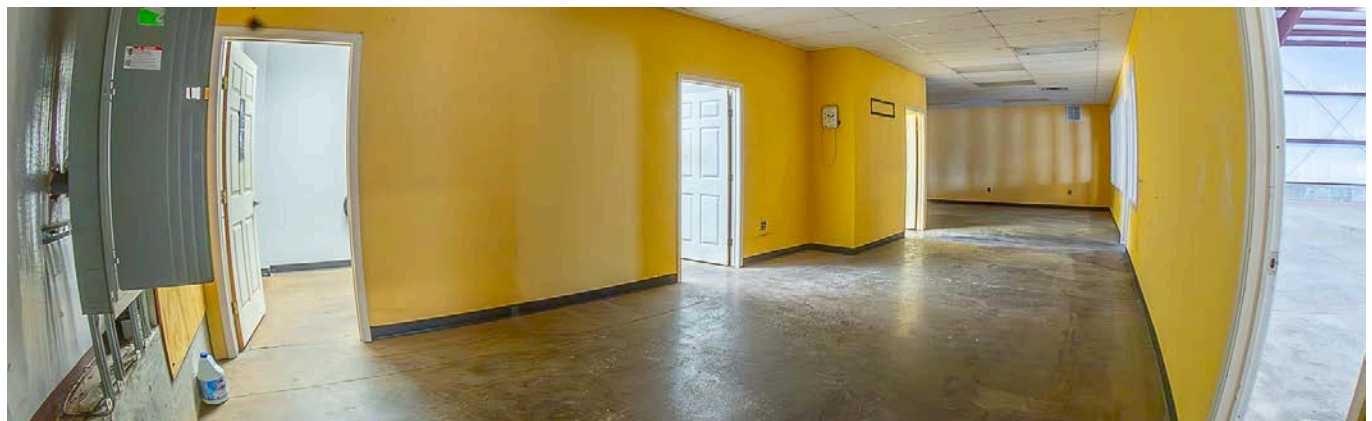
SPACE AVAILABLE: 11,573 SF



## BUILDING FEATURES

- ✓ Office Space: 1,000 SF
- ✓ 14'-20' Clear Height
- ✓ Grade Level Doors - 2
- ✓ Power: 400amp-240v/3 Phase
- ✓ HVAC Warehouse
- ✓ Insulated Warehouse
- ✓ Pitched Roof
- ✓ Mezzanine Storage
- ✓ Security System
- ✓ Purchase Options Available

[Learn More](#)





# BUILDING 10

SPACE AVAILABLE: 3,374 SF



## BUILDING FEATURES

- ✓ Office Space: 1,945 SF
- ✓ Auxiliary Office
- ✓ Purchase Options Available

[Learn More](#)

