

RETAIL PROPERTY // FOR LEASE

720 - 2,028 SF SUITES FOR LEASE AT FREEWAY PLAZA

38215-38499 W 10 MILE RD
FARMINGTON HILLS, MI 48335



- 720 - 2, 028 SF
- Many recent upgrades
- Office / Medical / Service
- Direct entrance
- Signage & great parking
- Immediate availability

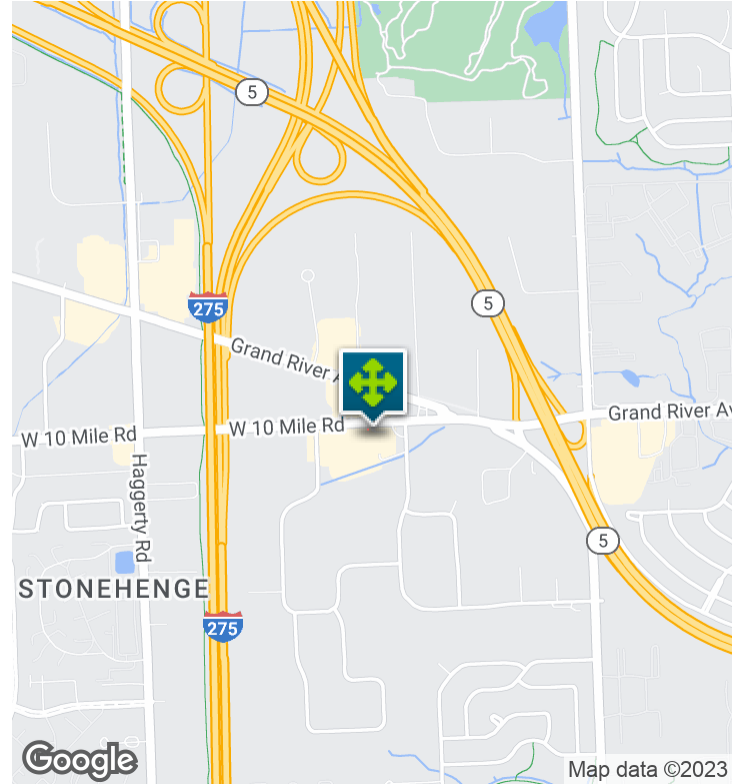


26555 Evergreen Road, Suite 1500
Southfield, MI 48076
248.358.0100

pacommercial.com

We obtained the information above from sources we believe to be reliable. However, we have not verified its accuracy and make no guarantee, warranty or representation about it. It is submitted subject to the possibility of errors, omissions, change of price, rental or other conditions, prior sale, lease or financing, or withdrawal without notice. We include projections, opinions, assumptions or estimates for example only, and they may not represent current, past or future performance of the property. You and your tax and legal advisors should conduct your own investigation of the property and transaction.

EXECUTIVE SUMMARY



Lease Rate	\$16.00 - 20.00 SF/YR (GROSS; NNN)
-------------------	---

OFFERING SUMMARY

Building Size:	12,575 SF
Available SF:	720 - 2,028 SF
Lot Size:	5 Acres
Year Built:	1973
Zoning:	B-3
Market:	Detroit
Submarket:	Farmington
Traffic Count:	27,544

PROPERTY OVERVIEW

Freeway Plaza offers a convenient, attractive, and affordable location for any business wanting to be in the Novi/Farmington Hills area. Three suites available for lease in Building A. Monument sign included with lease! Other tenants include The Breakfast Club, El Patio Restaurant, Salon Enigma, Gulliver Auto Sales, and Dog Watch.

LOCATION OVERVIEW

Located on 10 Mile Rd at Grand River, Halsted, Haggerty, this building is conveniently located at "the crossroads" of Novi and Farmington Hills. Surrounded by businesses and apartments, this property is easily accessible to residents and commuters in the area.

PROPERTY HIGHLIGHTS

- 720 - 2,028 SF
- Many recent upgrades
- Office / Medical / Service
- Direct entrance
- Signage & great parking
- Immediate availability

38215-38499 W 10 MILE RD, FARMINGTON HILLS, MI 48335 // FOR LEASE

PROPERTY DETAILS

LOCATION INFORMATION

Building Name	Freeway Plaza
Street Address	38215-38499 W 10 Mile Rd
City, State, Zip	Farmington Hills, MI 48335
County	South East Oakland
Market	Detroit
Sub-market	Farmington
Cross-Streets	West 10 Mile Rd and Haggerty Rd
Side of the Street	South
Signal Intersection	Yes
Road Type	Paved
Market Type	Medium
Nearest Highway	I-275
Nearest Airport	Detroit Metropolitan Airport

BUILDING INFORMATION

Building Size	12,575 SF
Occupancy %	100.0%
Tenancy	Multiple
Number of Floors	1
Year Built	1973
Construction Status	Existing
Condition	Good
Free Standing	Yes

PROPERTY INFORMATION

Property Type	Retail
Property Subtype	Strip Center
Zoning	B-3
Lot Size	5 Acres
APN #	23-30-127-038
Traffic Count	27544
Traffic Count Street	W 10 Mile Rd

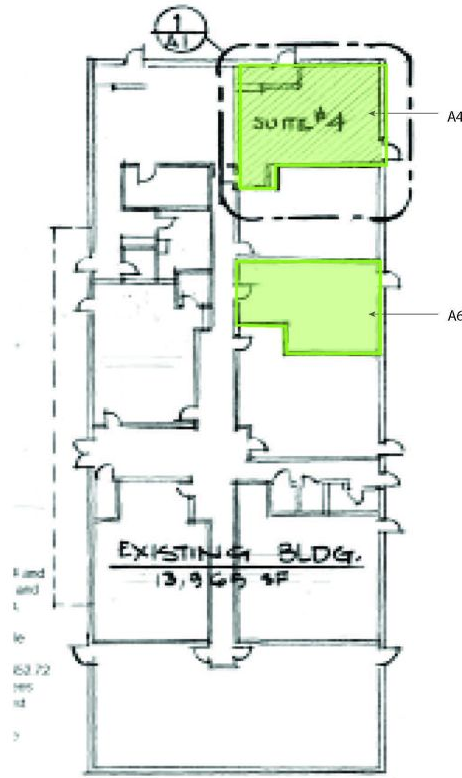
PARKING & TRANSPORTATION

Street Parking	No
Parking Type	Surface
Number of Parking Spaces	200

UTILITIES & AMENITIES

Leed Certified	No
-----------------------	----

LEASE SPACES



LEASE INFORMATION

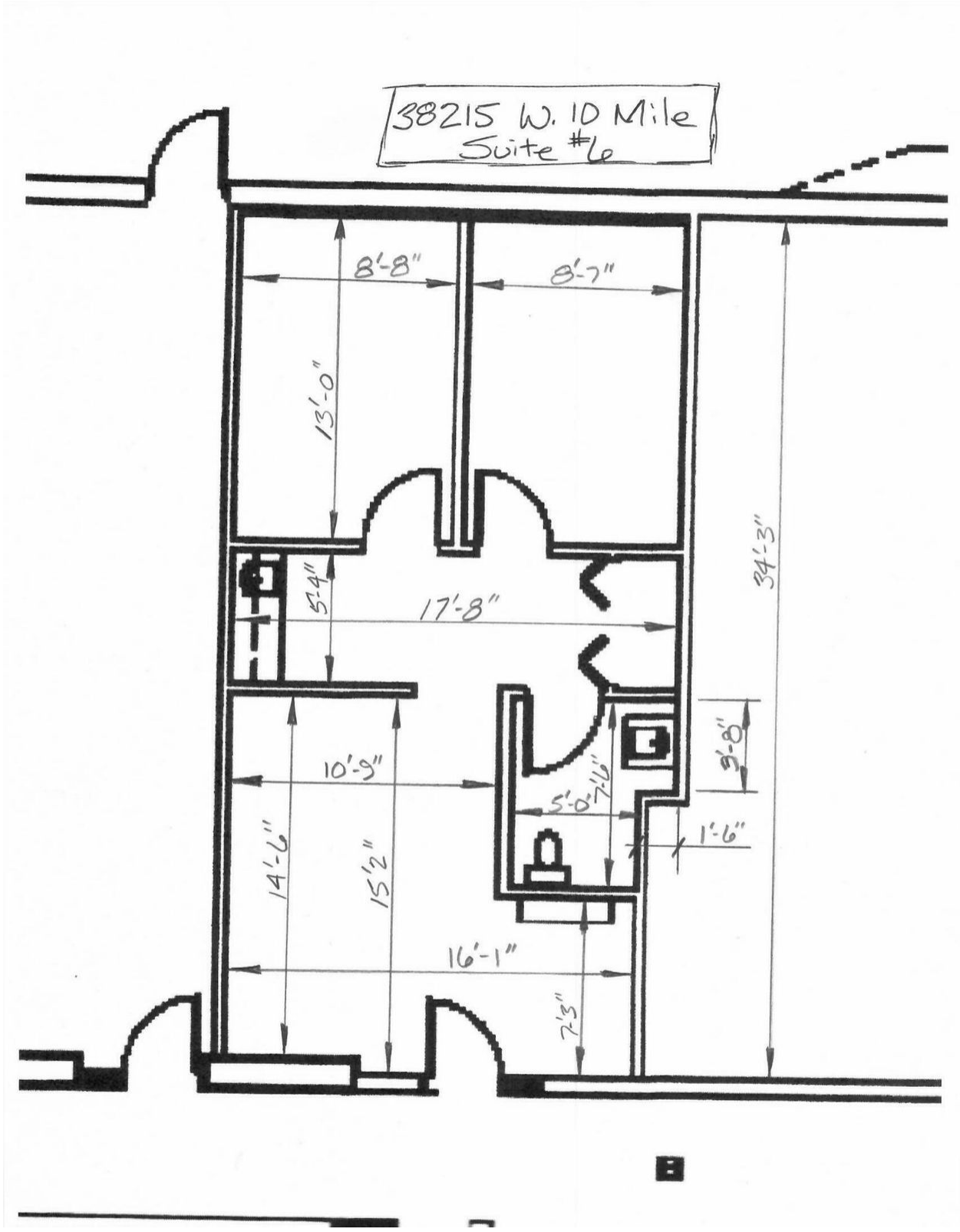
Lease Type:	Gross; NNN	Lease Term:	Negotiable
Total Space:	720 - 2,028 SF	Lease Rate:	\$16.00 - \$20.00 SF/yr

AVAILABLE SPACES

SUITE	TENANT	SIZE (SF)	LEASE TYPE	LEASE RATE	DESCRIPTION
38215 10 Mile Rd, Suite A6	Available	720 SF	Gross	\$16.00 SF/yr	Former Dog Watch
38215 10 Mile Rd, Suite A4	Available	1,027 SF	NNN	\$20.00 SF/yr	Office
38485 10 Mile Rd, Suite A5	Available	2,028 SF	NNN	\$17.00 SF/yr	Former Optim Eyes

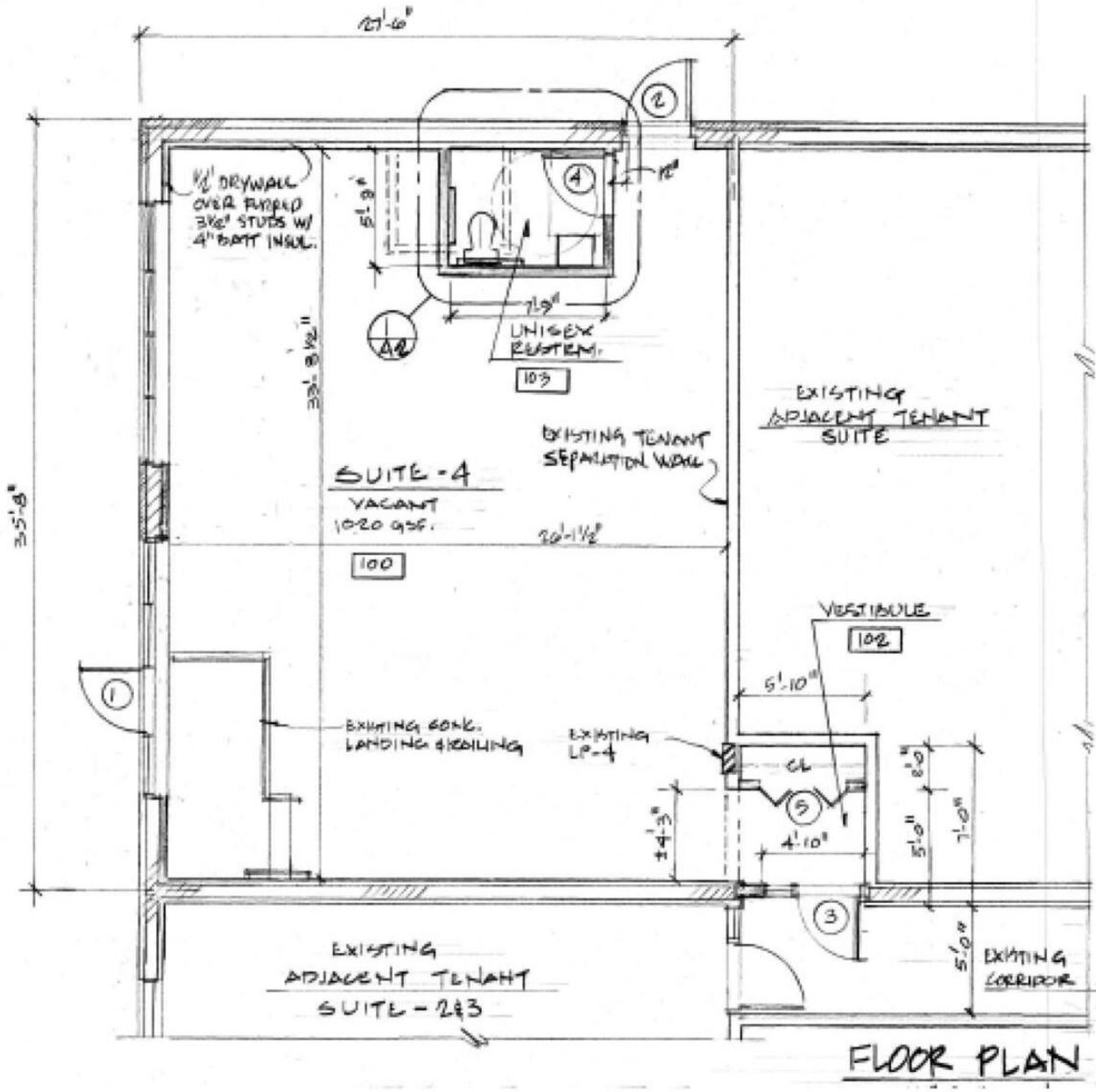
38215-38499 W 10 MILE RD, FARMINGTON HILLS, MI 48335 // FOR LEASE

FLOOR PLAN: SUITE A6



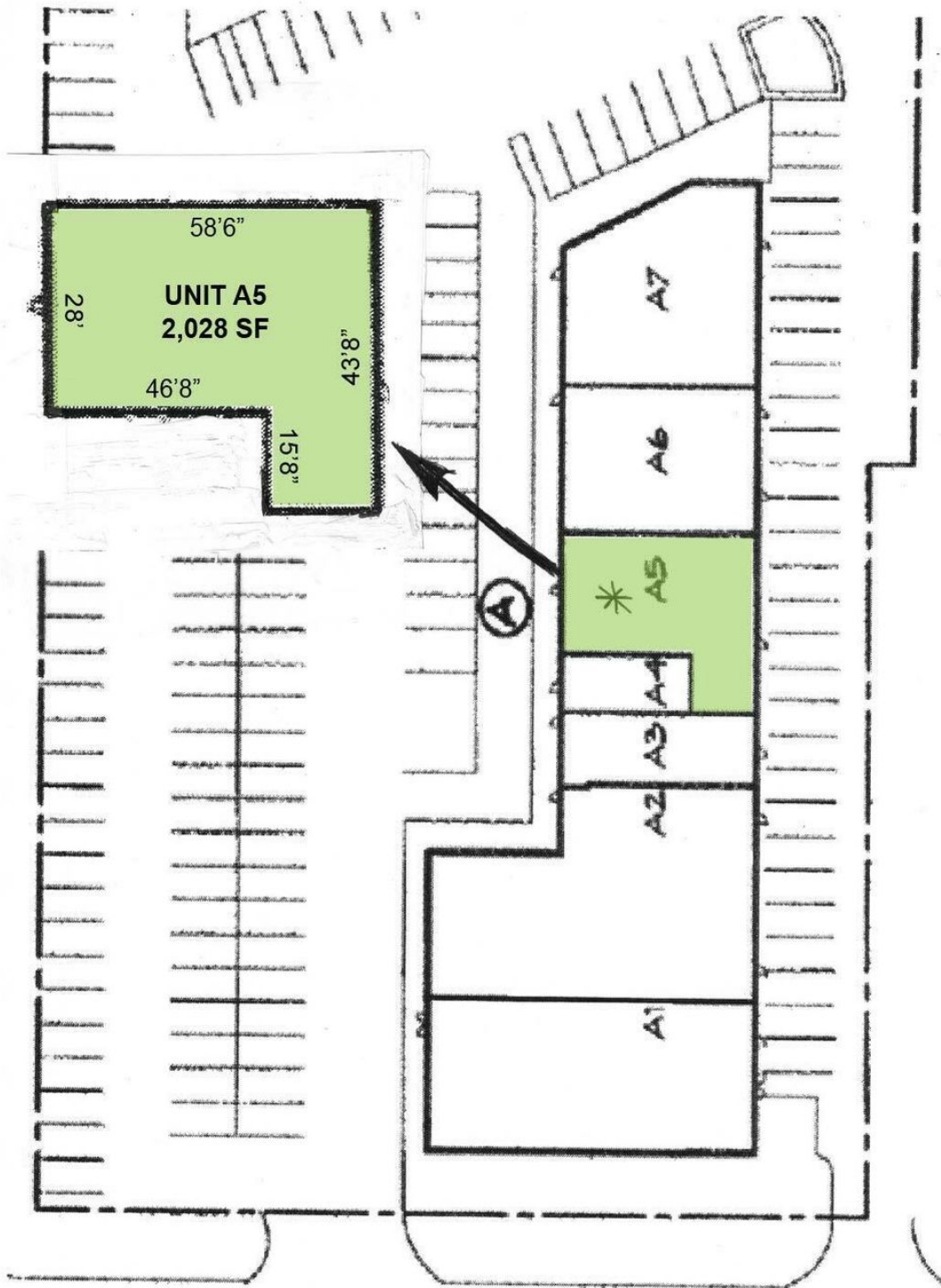
FLOOR PLAN: SUITE A4

SUITE A4



38215-38499 W 10 MILE RD, FARMINGTON HILLS, MI 48335 // FOR LEASE

ADDITIONAL PHOTOS



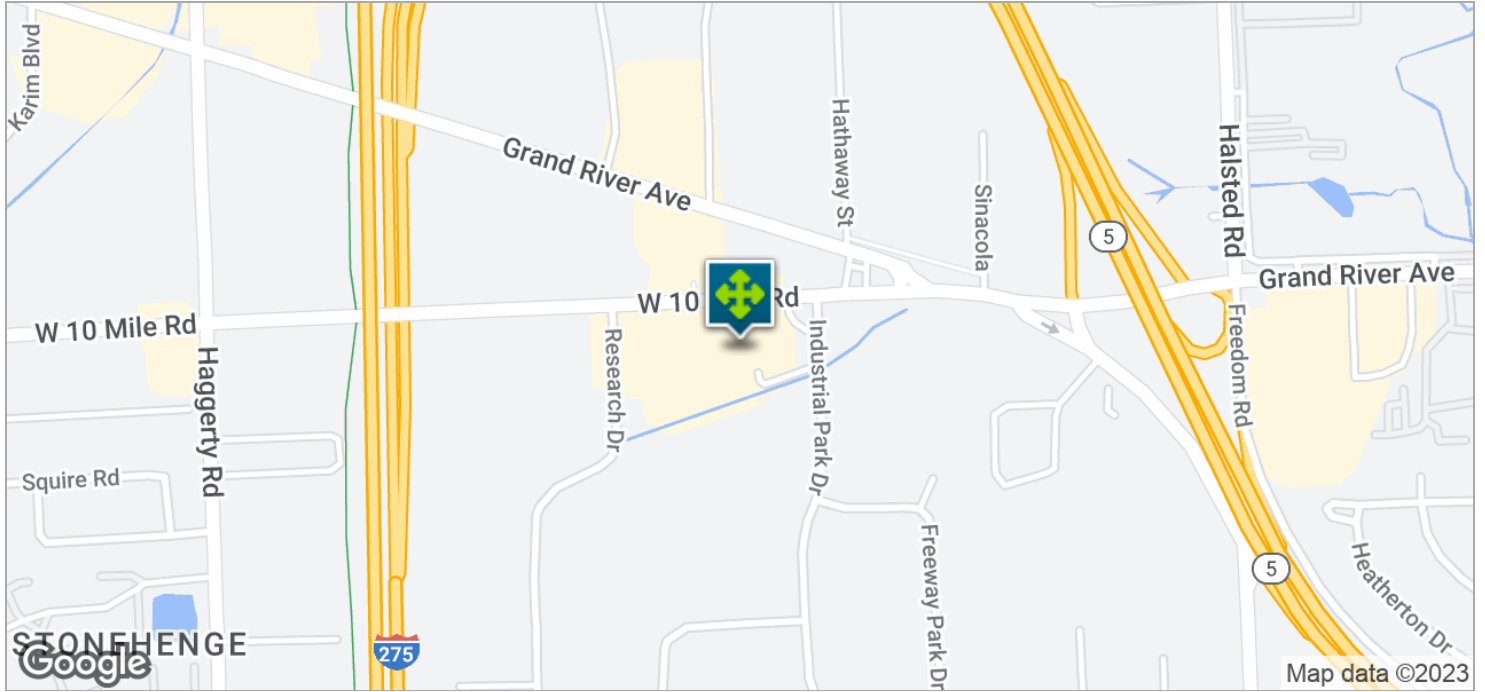
38215-38499 W 10 MILE RD, FARMINGTON HILLS, MI 48335 // FOR LEASE

RETAILER MAP



38215-38499 W 10 MILE RD, FARMINGTON HILLS, MI 48335 // FOR LEASE

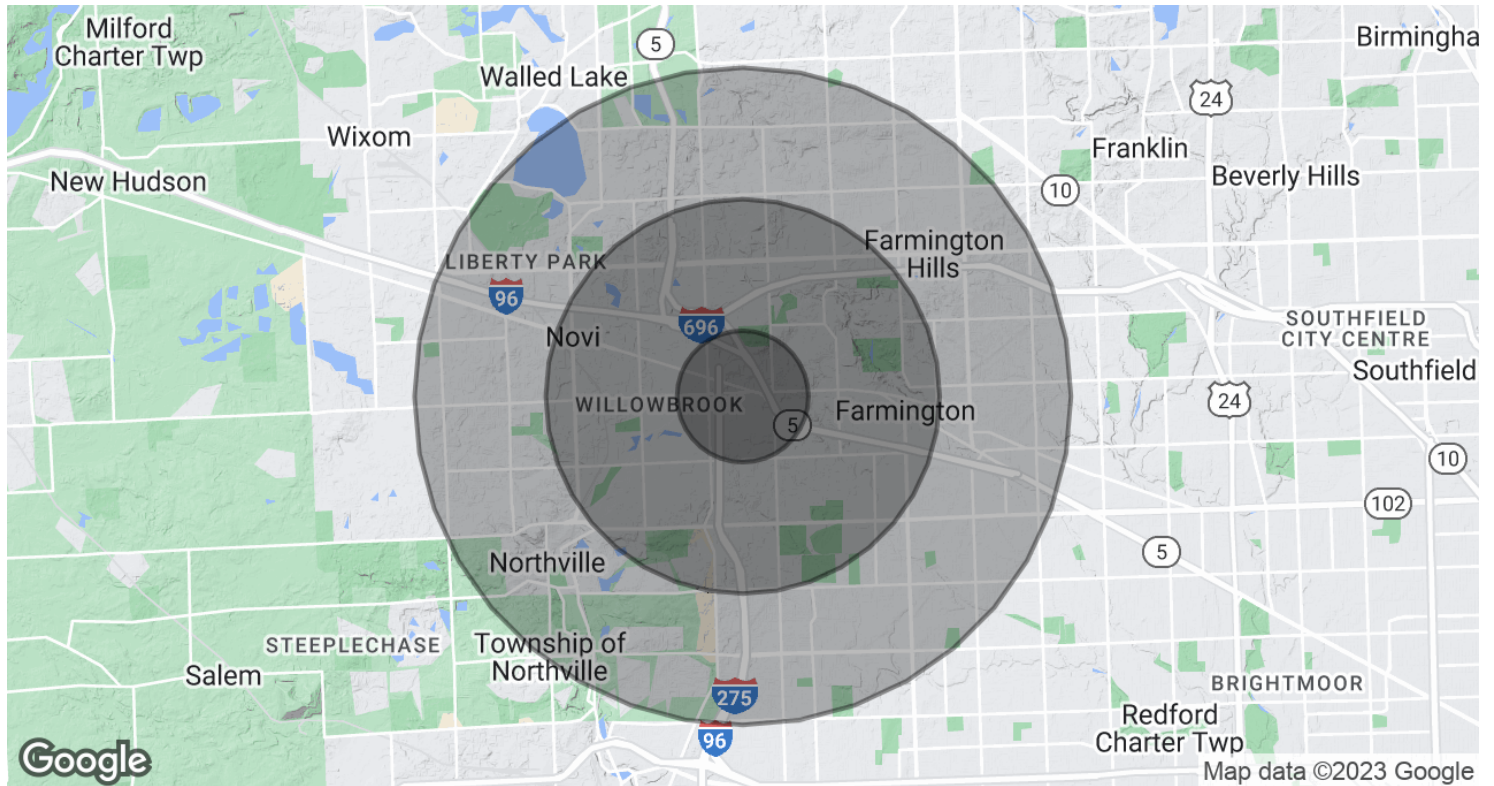
LOCATION MAPS



Dan Blugerman, CCIM SENIOR ASSOCIATE
D: 248.987.5418 | C: 248.701.9001
dan@pacommercial.com

We obtained the information above from sources we believe to be reliable. However, we have not verified its accuracy and make no guarantee, warranty or representation about it. It is submitted subject to the possibility of errors, omissions, change of price, rental or other conditions, prior sale, lease or financing, or withdrawal without notice. We include projections, opinions, assumptions or estimates for example only, and they may not represent current, past or future performance of the property. You and your tax and legal advisors should conduct your own investigation of the property and transaction.

DEMOGRAPHICS MAP & REPORT



POPULATION	1 MILE	3 MILES	5 MILES
Total Population	7,141	66,440	184,287
Average Age	37.6	39.7	42.1
Average Age (Male)	36.4	37.9	40.5
Average Age (Female)	38.8	41.3	43.6
HOUSEHOLDS & INCOME	1 MILE	3 MILES	5 MILES
Total Households	3,125	28,859	77,018
# of Persons per HH	2.3	2.3	2.4
Average HH Income	\$90,466	\$92,736	\$97,175
Average House Value	\$321,603	\$282,840	\$273,826

* Demographic data derived from 2020 ACS - US Census

38215-38499 W 10 MILE RD, FARMINGTON HILLS, MI 48335 // FOR LEASE

CONTACT US



FOR MORE INFORMATION, PLEASE CONTACT:



Dan Blugerman, CCIM
SENIOR ASSOCIATE

D: 248.987.5418

C: 248.701.9001

dan@pacommercial.com

P.A. Commercial

26555 Evergreen Road, Suite 1500
Southfield, MI 48076

P: 248.358.0100

F: 248.358.5300

pacommercial.com

Follow Us!



 **P.A. COMMERCIAL**
Corporate & Investment Real Estate

We obtained the information above from sources we believe to be reliable. However, we have not verified its accuracy and make no guarantee, warranty or representation about it. It is submitted subject to the possibility of errors, omissions, change of price, rental or other conditions, prior sale, lease or financing, or withdrawal without notice. We include projections, opinions, assumptions or estimates for example only, and they may not represent current, past or future performance of the property. You and your tax and legal advisors should conduct your own investigation of the property and transaction.