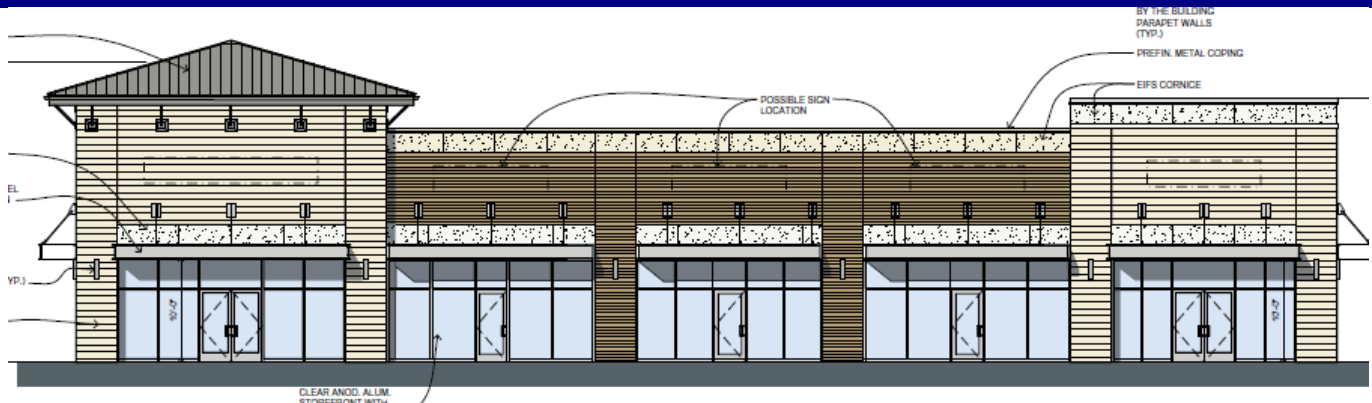


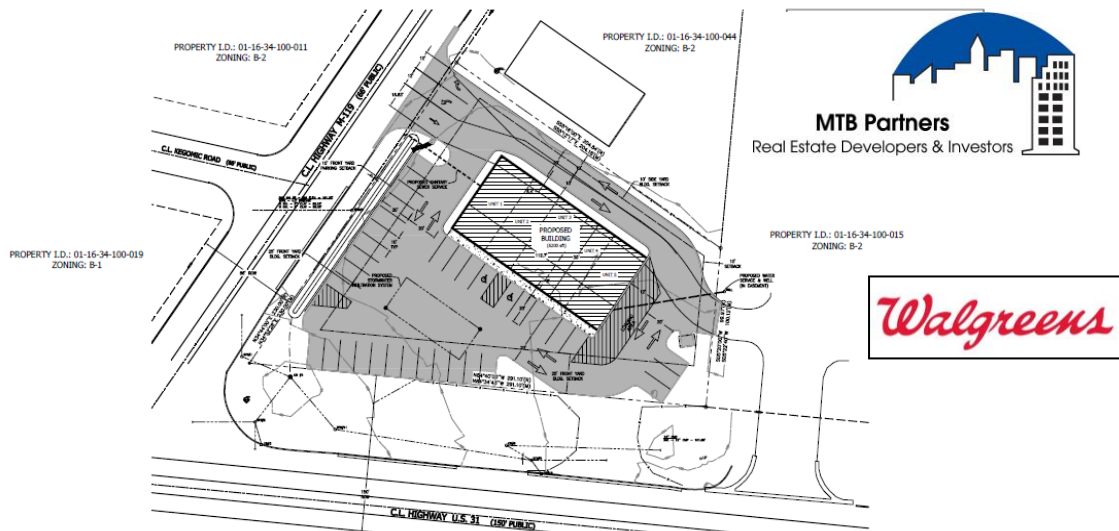
PETOSKEY HARBOR POINTE

NORTHEAST CORNER OF U.S. 31 & M-119
PETOSKEY, MICHIGAN



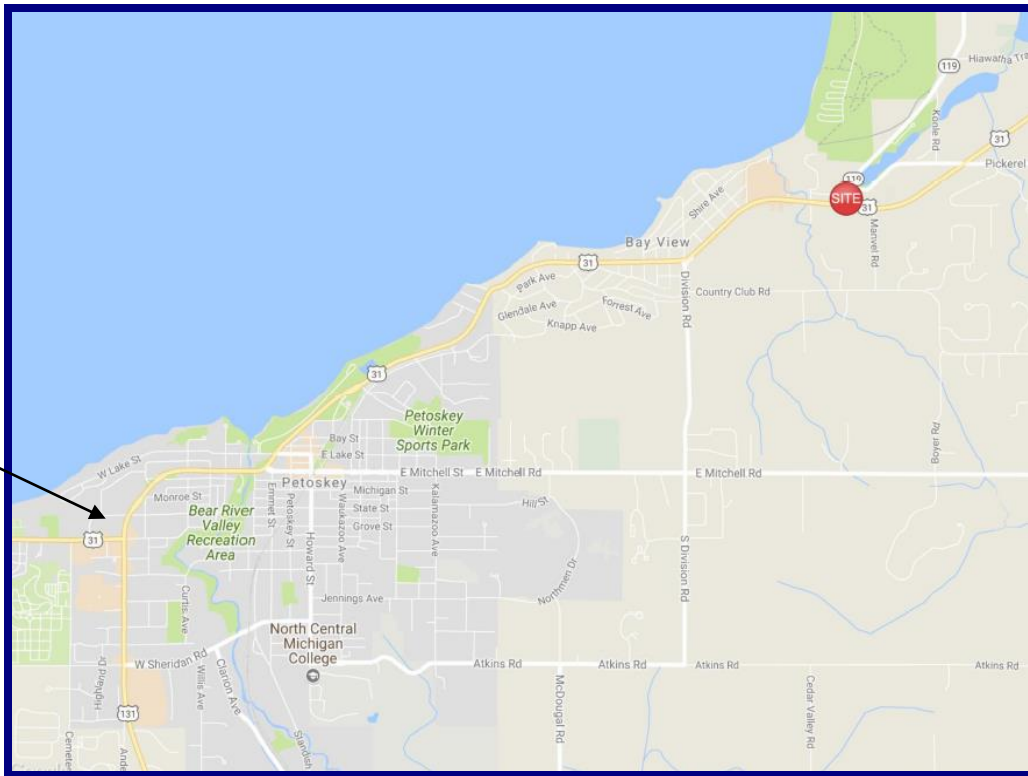
PROPOSED 6,200 SQUARE FOOT RETAIL CENTER / MEDICAL BUILDING FROM 1,100 SQUARE FEET TO 6,200 SQUARE FEET AVAILABLE

- ATTRACTIVE NEIGHBORHOOD RETAIL BUILDING ON A HIGHLY VISIBLE CORNER
- LOCATED ON THE NORTH SIDE OF PETOSKEY, WITH EASY ACCESS TO HARBOR SPRINGS
- APPROXIMATELY 45,000 PEOPLE WITHIN A 15 MILE RADIUS/65,000 PEOPLE IN A 20 MILE RADIUS
- AVERAGE HOUSEHOLD INCOME OF APPROXIMATELY \$90,000 WITHIN A 15 MILE RADIUS
- TRAFFIC COUNTS ARE THE HIGHEST IN THE AREA, WITH APPROXIMATELY 24,000 VEHICLES PER DAY
- APPROXIMATELY 1.3 MILLION VISITORS ANNUALLY TO THE AREA
- GATEWAY TO HARBOR SPRINGS AREA

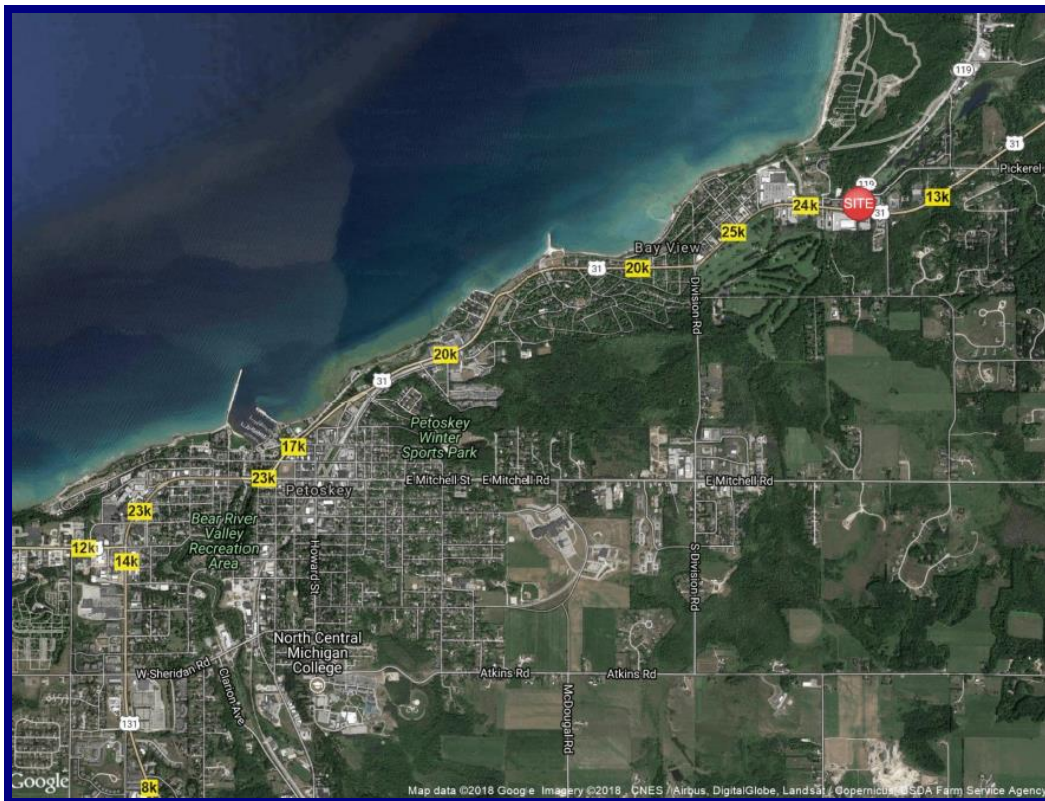


FOR MORE INFORMATION CONTACT:

MICHAEL BAILEY AT (248) 770-9106 Email: m Bailey@mtbpartnersllc.com
or PAT LENNOX AT (248) 594-4350 Email: pat@mtbpartnersllc.com



MAP



AERIAL WITH TRAFFIC COUNTS