



# MURRAY OFFICE SUITE FOR LEASE

5107 SOUTH 900 EAST, MURRAY, UT 84117

**LEASE RATE: \$18.00/FULL SERVICE**

**AVAILABLE APRIL 1, 2026**



## PROPERTY INFORMATION

- ✓ Suite 140: 2,289 RSF
- ✓ Former Birthing Center
- ✓ Perfect For Professional Office  
(Lawyer, Accountant, Mortgage Co., Etc.)
- ✓ Ample Parking: 4/1,000 SF
- ✓ Fiber Available
- ✓ Tenant Improvements Available
- ✓ Monument Signage
- ✓ Multiple Secure Entrances
- ✓ Ample Plumbing Throughout

## DRIVE TIMES

I-15	4 Min
I-215	2 Min
U Of U	15 Min
Downtown	12 Min

## CONTACT US

**KELLEN KONCAR**

✉ kellen@cresutah.com

☎ 801.824.1311

**STEVE JAMES**

✉ steve@cresutah.com

☎ 801.850.7947

🌐 [www.cresutah.com](http://www.cresutah.com)

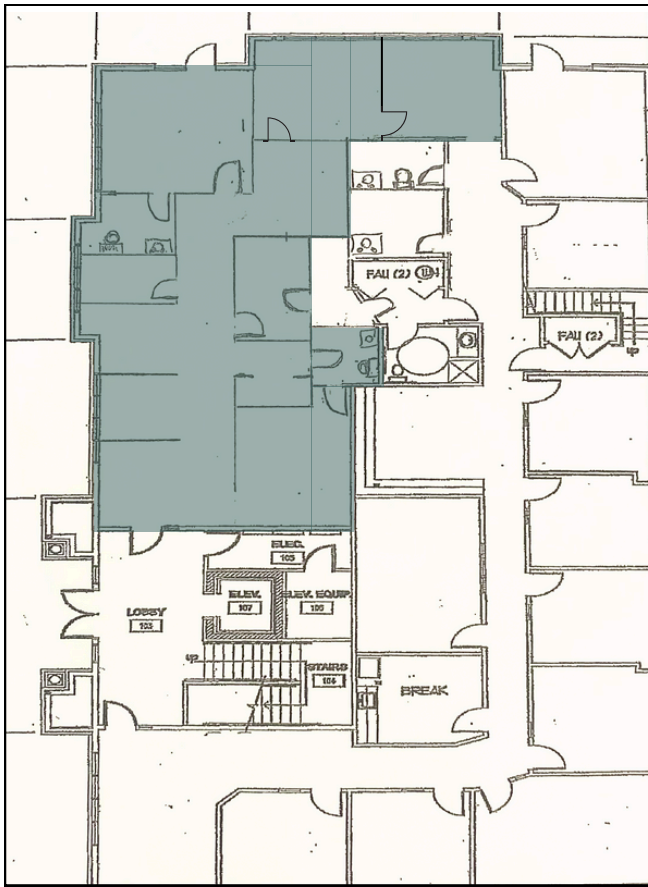
Call Us  
**801.876.6070**





# MURRAY OFFICE SUITE FOR LEASE

5107 SOUTH 900 EAST, MURRAY, UT 84117



This information is given with the understanding that all negotiations and/or real estate activity related to the property described above shall be conducted through this CRES office. The above information while not guaranteed, was obtained from sources we believe to be reliable.

## CONTACT US

**KELLEN KONCAR**

✉ kellen@cresutah.com ☎ 801.824.1311

**STEVE JAMES**

✉ steve@cresutah.com ☎ 801.850.7947 🌐 www.cresutah.com

Call Us  
**801.876.6070** 📞