

FOR LEASE

2157 W WASHINGTON BLVD

1,997 SF retail space available for lease



LOS ANGELES, CA 90018

km Kidder
Mathews

2157 W WASHINGTON BLVD

1,997 SF RETAIL SPACE FOR LEASE

We are pleased to present 2157 W Washington Blvd, an approximately 1,997 SF retail space available for lease.

The subject property is strategically located in Arlington Heights in close proximity to Jefferson Park, West Adams, Mid City, just south of Koreatown, east of Culver City, West of Downtown LA and just minutes away from the 10 freeway.

The storefront space offers high visibility and features front and rear access, 12' 3" ceilings, concrete flooring and in-unit bathroom.

Being located off of Washington Blvd and Oxford Ave offers heavy traffic and foot traffic which makes this space deal for a wide array of retail, service and creative businesses in a vibrant and extremely dense and desirable neighborhood in Los Angeles.

For more information, please contact Casey Lins at 714-333-6768 or Casey.Lins@kidder.com.



The storefront space is located on the ground floor of a mixed-use community offering high visibility along a trending corridor.

Strategic Location: Situated in Arlington Heights in close proximity to Jefferson Park, West Adams, Mid City and the 10 freeway

High Visibility: On the corner of Washington Blvd and Oxford Ave with heavy traffic

Parking available on-site

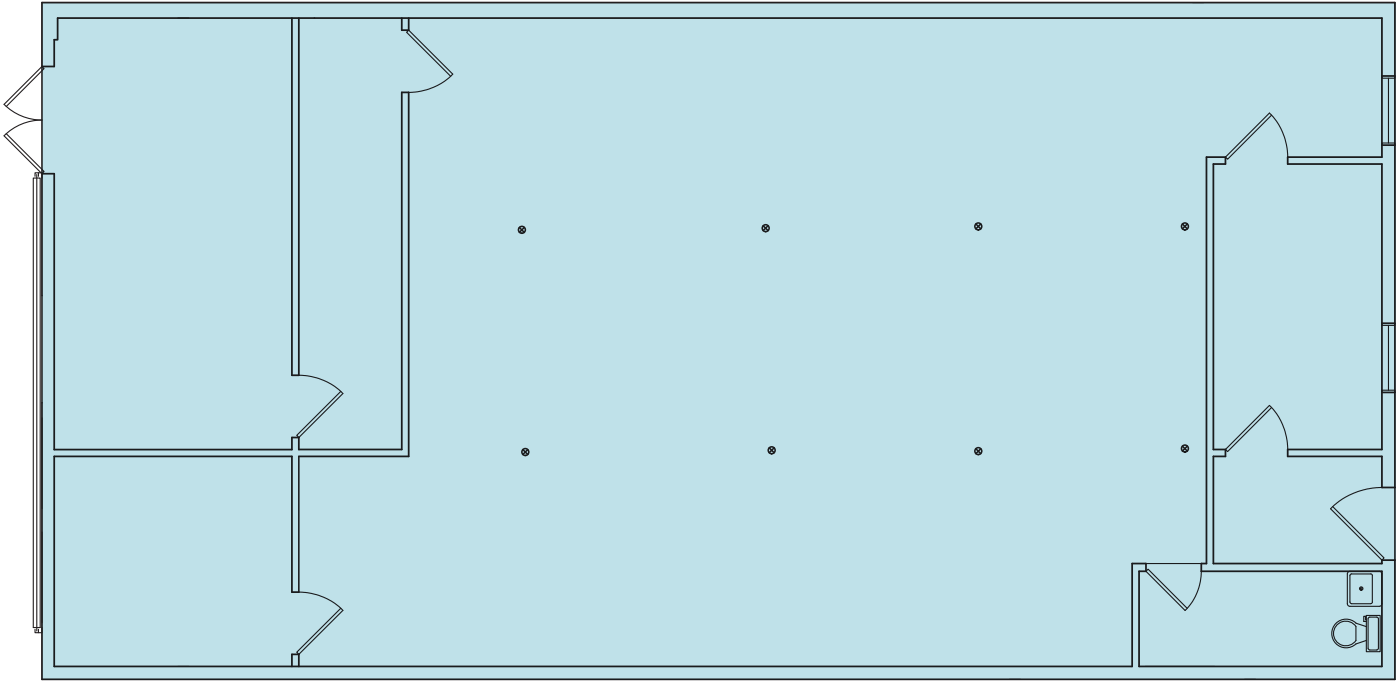
Attractive Lease Rate: \$1.35/SF (\$2,695.95/month)

1,997 SF
AVAILABLE

\$1.35/SF
LEASE RATE



FLOOR PLAN



1,997 SF

AVAILABLE

\$1.35/SF

LEASE RATE

NOW

AVAILABLE



2157 W WASHINGTON BLVD

Exclusively leased by

CASEY LINS
213.225.7223
casey.lins@kidder.com
LIC N° 01902650

VINCENT COOK
213.225.7222
vincent.cook@kidder.com
LIC N° 02012324

KIDDER.COM

This information supplied herein is from sources we deem reliable. It is provided without any representation, warranty, or guarantee, expressed or implied as to its accuracy. Prospective Buyer or Tenant should conduct an independent investigation and verification of all matters deemed to be material, including, but not limited to, statements of income and expenses. Consult your attorney, accountant, or other professional advisor.

km Kidder
Mathews